



COMMODITIES

## Cable Joints / Cable Clamps

The cable joints IP 67 are used for watertight joining of flexible cables and for repair of cable break downs. A safe and robust cable joint for 2, 3 and 5 conductors which will almost never wear out.

The cable joints are used for both AC and DC supply, e.g. for garden light, hedge trimmers, garden pumps or in connection with temporary power supply such as Christmas tree fairy lights, roadwork signals or at construction sites.

Cable clamps with reversible clamp are easily adjustable to various cable diameters and are used for cable lead-in into boxes, boards, electrical devices etc.

### Cable junction boxes

TYPE	EAN NR.	POLES	UNION	MAX V	DIM.		CABLE DIAM.	
					SLEEVES	L	MIN	MAX
SK-2-2500	61000001	2	PG-11	600	24	100	6	12,5
SK-3-2500	61000002	3	PG-16	600	28	120	6	15,0
SK-5-2500	61000003	5	PG-21	600	25	150	10	19,0

Material: Nylon 6.6, ambient temperature: -20°-60°C.

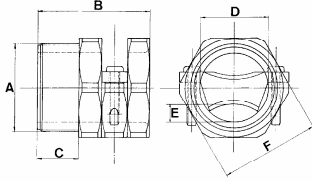
Colours: Black, also available in grey.

### Cable clamps

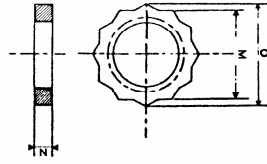
TYPE	A	B	C	D	E	F	MIN	
PG-9	15,2	23,0	8,5	11,0	3,2	19		
PG-11	18,6	25,0	9,0	13,5	3,5	21		
PG-13,5	20,4	27,5	10,0	14,5	3,7	23		
PG-16	22,5	29,0	10,0	16,5	4,0	25		
PG-21	28,3	37,0	13,5	22,0	5,5	32		
PG-29	37,0	47,0	17,0	29,5	7,5	42		
M-16	14,0	23,5	9,0	11,0	3,5	19		
M-20	18,0	29,5	12,0	14,5	4,0	23		

Material: Nylon 6.6, ambient temperature: -20°-100°C.

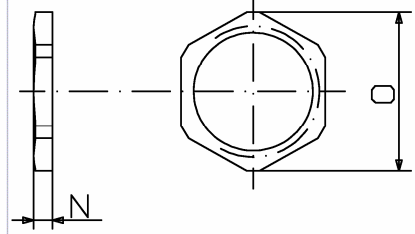
Colours: Black and grey.



Cable clamps



Lock nuts - KGM



Lock nuts - MGM

### Lock nuts

TYPE	DIMENSIONS IN MM		
	M	N	O
PVC, star-shaped			
KGM-9	19	4,5	17,3
KGM-11	22	5,0	25,4
KGM-13,5	24	5,5	27,7
KGM-16	27	6,0	31,1
KGM-21	32	6,5	36,9
KGM-29	41	7,5	47,3
KMM-16	-	5,0	24,0
KMM-20	-	6,0	28,0

### Lock nuts

TYPE	DIMENSIONS IN MM		
	M	N	O
Brass			
MGM-9		2,8	18
MGM-11		3,0	21
MGM-13,5		3,0	23
MGM-16		3,0	26
MMM-16		3,0	21
MMM-20		3,0	26

## X-ON Electronics

Largest Supplier of Electrical and Electronic Components

*Click to view similar products for [Wire Identification category](#):*

*Click to view products by [CML manufacturer](#):*

Other Similar products are found below :

[CU6337-000](#) [CU6342-000](#) [FCA-410-12](#) [11631010](#) [1-1768037-1](#) [1-1768037-2](#) [1-1768050-0](#) [PXLK-VI](#) [Q62184-1](#) [A64304-000](#) [QMT221](#)  
[HK032WE1NF038B](#) [1330-0519-10](#) [1395199-1](#) [1395200-1](#) [1395202-1](#) [DMVF050WE-300S6](#) [D-SCE-1K-2.4-50-4-CS7834](#) [1538738-1](#)  
[E90935-000](#) [EC1238-000](#) [EC1465-000](#) [EC1855-000](#) [EC1859-000](#) [EC1863-000](#) [EC5415-000](#) [EC7277-000](#) [EC7352-000](#) [EC7603-000](#)  
[EC7707-000](#) [EC7735-000](#) [EC7768-000](#) [EC7828-000](#) [EC7854-000](#) [EC7952-000](#) [EC8128-000](#) [1768037-8](#) [1768041-7](#) [NC-127191-10-9](#)  
[HS048WE2NF038B](#) [C03232-000](#) [HTCM-SCE-14-4H-9](#) [HTMS-3/16-9](#) [HT-SCE-1/4-2.0-4](#) [HT-SCE-3/16-2.0-4](#) [HTTMS-1/2-1.50-9](#) [HTTMS-](#)  
[CM-1/2-4H-9](#) [HX-SCE-19.0-50-9](#) [HX-SCE-6.4-50-4](#) [C25254-000](#)