

audio transformers (high performance)



PCB MOUNTING MINIATURE

A range of high quality, industry standard, audio frequency transformers, enclosed in ABS cases.

Specifically designed for direct printed circuit board mounting on a 0.1 inch grid.

Each transformer is constructed with dual windings on the primary and secondary providing a wide range of impedance matching ratios to suit many input, interstage and output applications.

A foil screen is provided between the primary and secondary windings and the transformer are rated at 100mW at 300 Hz and 1mW at 30 Hz (less than 1% T.H.D.)

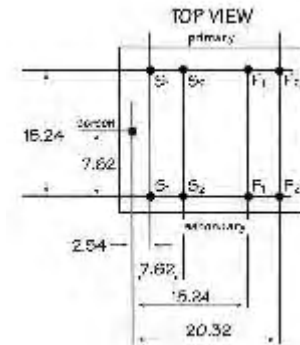
An optional Mu-metal screening can, is available if required. P/N A262CAN)



Transformer W28 H22 D23mm



Mumetal Can W29 H23 D24mm



Ratio	6.3+6.3:1+1		1+1:2+2		1+1:6.45+6.45	
	PRI	SEC	PRI	SEC	PRI	SEC
Part No.	A262A1E		A262A2E		A262A3E	
Impedance	150	3.75+	150+	600+	150+	6.25+
Individual windings	150 Ω	3.75 Ω	150 Ω	600 Ω	150 Ω	6.25k Ω
Series Connected	600 Ω C.T.	15 Ω C.T.	600 Ω C.T.	2.4k Ω C.T.	600 Ω C.T.	25k Ω C.T.
Parallel Connected	150 Ω	3.75 Ω	150 Ω	600 Ω	150 Ω	6.25 Ω
d c Resistance	10+10 Ω	0.36+0.36 Ω	10+10 Ω	55+55 Ω	9.6+9.6 Ω	535+605 Ω
Frequency Range (+1.5db)	30Hz - 30kHz		30Hz - 35kHz		30Hz - 25kHz	
Proof test voltage : primary to secondary and windings to screen	1 kV		1 kV		1 kV	
Ratio	1+1:1+1		1+1:1+1			
	PRI	SEC	PRI	SEC		
Part No.	A262A6E		A262A7E			
Impedance	150+	150+	600+	600+		
Individual windings	150 Ω	150 Ω	600 Ω	600 Ω		
Series Connected	600 Ω C.T.	600 Ω C.T.	2.4k Ω C.T.	2.4k Ω C.T.		
Parallel Connected	150 Ω	150 Ω	600 Ω	600 Ω		
d c Resistance	15+15 Ω	20+20 Ω	42+42 Ω	58+58 Ω		
Frequency Range (+1.5db)	30Hz - 30kHz		30Hz - 35kHz			
Proof test voltage : primary to	1 kV		1 kV			

This range of transformers is also available with the Mu metal screening can fitted and may be ordered by replacing the suffix 'E' with the suffix 'C'

secondary and windings to screen			
-------------------------------------	--	--	--

X-ON Electronics

Largest Supplier of Electrical and Electronic Components

Click to view similar products for [oep](#) manufacturer:

Other Similar products are found below :

[016608F](#) [PT4](#) [E187B](#) [PT42E](#) [PT8](#) [TF048](#) [Z1604](#) [P1200](#)