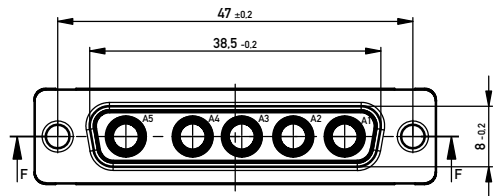
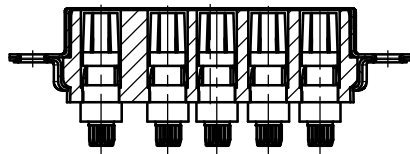
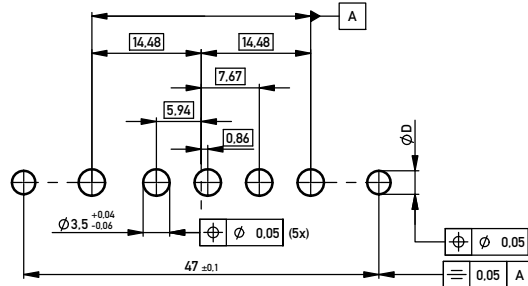


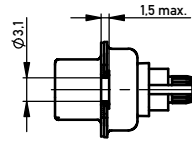
SCHNITT F-F



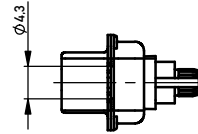
Layoutvorschlag  
recommended layout



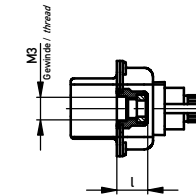
Gehäuse genietet  
riveted housing



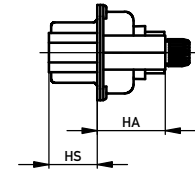
Gehäuse geklammert  
clamped housing



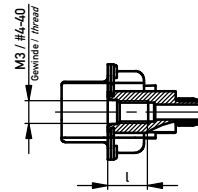
- / Nietmutter mit Polyamid-Klemmring  
- / clinchnut selflocking



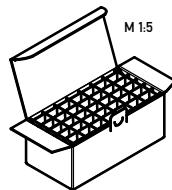
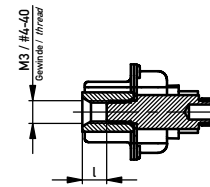
Zubehör Steckseite / Zubehör Anschlussseite  
accessories mating side / accessories terminal side



- / Einpressbolzen  
- / pressfit bolt



Gewindehülse / Einpressbolzen  
threaded spacer / pressfit bolt



Verpackung: Karton 084116 und Gefache 084110  
packaging: box 084116 and separator 084110

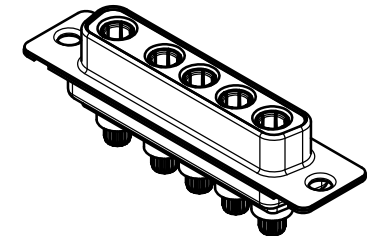
Verpackungseinheit: 35 St.  
packaging unit: 35 pcs.

Fehlende Masse und Angaben siehe IEC 807-2 (DIN 41652) und DIN 41626-1  
Missing information and dimensions according to IEC 807-2 (DIN 41652) and DIN 41626-1

Sonstige Angaben siehe Fertigungsunterlagen  
Additional indications according to production documentation

Schichtaufbau im metallisierten Loch siehe Zeichnung 164062  
metal plating of plated-through hole according to drawing 164062

Gewindehülse: Maß HS optional 6,4 oder 5,9  
threaded spacer/pressfit bolt: dimension HS optional 6.4 or 5.9



Gehäuse geklammert clamped housing	-	-	-	-	Ø 4,3	-	-	-	35	
Gehäuse genietet riveted housing	-	-	-	-	Ø 3,1	-	-	-	35	
Nietmutter mit Polyamid-Klemmring clinchnut self-locking	-	-	-	-	M3	4,2	4,2	3,2±0,1	35	
Einpressbolzen pressfit bolt	104287	2	-	-	M3	4,5	9,0	3,1 <sup>+0,04</sup> <sub>-0,06</sub>	35	
	-	-	-	-	#4-40	-	-	-	-	
Gewindehülse / Einpressbolzen threaded spacer / pressfit bolt	-	-	#4-40	3	6,4	#4-40	-	9,0	3,1 <sup>+0,04</sup> <sub>-0,06</sub>	35
	114138	2	M3	-	-	M3	-	-	-	
Zubehör accessories	Ident.-Nr. part-no.	Anford.-stufe class	Gewinde Zubehör Steckseite thread accessories mating side	l Gewinde- tiefe depth of thread	HS Einbaumaß Steckseite mounting height mating side	Gewinde Zubehör Anschlussseite thread accessories terminal side	l Gewinde- tiefe depth of thread	HA Einbaumaß Anschlussseite mounting height terminal side	D Layout layout	VPE

Information:	Tolerances	Scale 2:1
All rights reserved. Only for information. To ensure that this is the latest version of this drawing, please contact one of the ERNI companies before using.	Subject to modification without prior notice. Drawing will not be updated.	Designation <b>TMC-S 5W5 EP36 9.0</b> <b>TMC-S 5W5 EP36 9.0</b>
Copyright by ERNI Production GmbH & Co. KG Proprietary notice pursuant to §91 TMRG to be observed	ERNI www.ERNI.com	<b>054883</b>
e	28.01.2015	Class TMC
Index	Date	I A2

## X-ON Electronics

Largest Supplier of Electrical and Electronic Components

*Click to view similar products for [D-Sub Standard Connectors](#) category:*

*Click to view products by [ERNI](#) manufacturer:*

Other Similar products are found below :

[DCM37S732N](#) [DAM15P500](#) [DEV09S364GTLF](#) [DEM09P032N](#) [DDM50P732N](#) [DAM15S332N](#) [173109-2218](#) [173109-2466](#) [173109-2436](#)  
[173109-2435](#) [56F706-005-LI](#) [56F711-015](#) [015-0341-000](#) [015-0372-008](#) [015-8544-011](#) [017041-0005](#) [020419-0104](#) [012-0515-000](#) [012-9507-](#)  
[034](#) [012-9507-114](#) [012-9534-001](#) [020745-0008](#) [609-25P](#) [M24308/2-23Z](#) [M243082310F](#) [M243082410F](#) [M243082411F](#) [M24308/4-21](#)  
[CT1A18-11PSA206](#) [CT1N36-5SC](#) [CT2-16S-17PS](#) [CT2-20-15PCAU](#) [CT2-24-12PS](#) [CT2-24-28PSF127A206](#) [CT2-32-9PC](#) [CT6F9767-14-4-](#)  
[14S-5PC](#) [CT6FA10SL-4PS](#) [CT7-18-10SC](#) [CT7-18-10SCAU](#) [CT7-18-12SCAU](#) [CT7-18-1PC](#) [CT7-18-1PCAU](#) [CT7-18-21SCAU](#) [M83513/01-](#)  
[FC](#) [M83723/76W24619 L/C](#) [M85049/48-3-2F](#) [69001-865](#) [6STD09PCM99B70X](#) [6STD09SCM99B30X](#) [6STD09SCT99S40X](#)