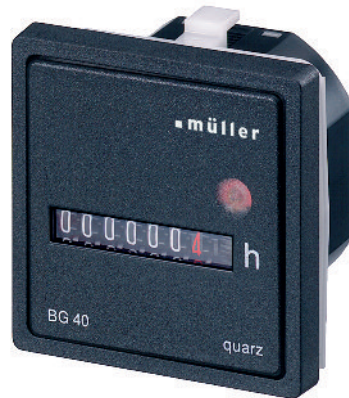




BW 40.18
Front panel 48 x 48 mm



BG 40.27
Front panel with trim 55 x 55 mm

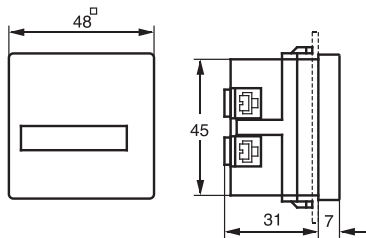


BG 40.37
Front panel with trim 72 x 72 mm

BW 40.18
BG 40.17

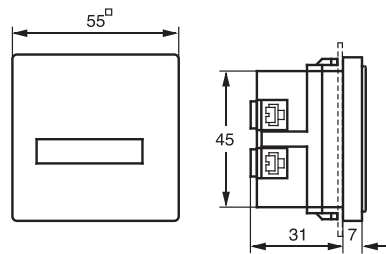
BW 40.28
BG 40.27

BW 40.38
BG 40.37



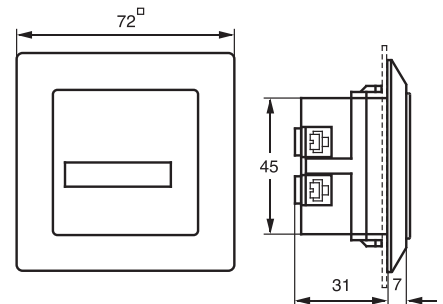
Order number	Version
▼ BW 40.18	Alternating current
▼ BG 40.17	Direct current

▼ Housing colour



Order number	Version
▼ BW 40.28	Alternating current
▼ BG 40.27	Direct current

▼ Housing colour



Order number	Version
▼ BW 40.38	Alternating current
▼ BG 40.37	Direct current

▼ Housing colour

Highlights

- With retaining clip
- With universal connections
- Touch proof connections to VBG4
- Low-noise
- BW: Alternating current
BG: Direct current quartz crystal

Elapsed time counters BW/BG 40
for panel mounting, Alternating/Direct Current

Special features

- Large format numerals 4.4 mm in height
- Quick-fix retaining clip
- Easy to connect – screw terminals accessible from rear
- Attachments for other cutouts
- Ring seal for IP 54 – also seals front panel cutout
- BG: quartz stabilized
- BG: large voltage ranges

Technical data	
Supply voltages (please state when ordering)	BW: 230 V, 50 Hz (standard) 115 V, 50 Hz 24 V, 50 Hz BG: 12– 48 VDC (standard) 5– 24 VDC 36–120 VDC
Other voltages	on request
Optional frequency	BW: 60 Hz
Voltage tolerance	BW: ±15% · BG: ±10%
Power consumption (real power)	BW: 0.15 W · BG: approx. 20 mW at 12 VDC
Counter capacity	BW: 99999 h · BG: 999999 h
Accuracy of reading	BW: 0,01 h · BG: 0,1 h
Numeral height	4.4 mm
Numeral colour	white, decimal figures red
Operation indicator	fast-running wheel
Permitted ambient temperature	BW: –15° ... +55°C · BG: –10° ... +50°C
Enclosure	self-extinguishing thermoplastic
Switchboard flush mounting	housing to DIN EN 43700
Type of connection	Universal: Screw, soldered and 6.3 x 0.8 mm AMP plug-type connections
Type of protection	Front IP 50 to DIN EN 60529 (with ring seal 101.003.004: IP 54)
Class of protection	BW: II · BG: III (up to 48 VDC) when fitted in accordance with regulations

Accessories

Retaining bracket for fixing to wall or distribution board	692.006
Terminal cover for retaining bracket	003.007
Trim 55 x 55 mm	190.003
Mask 72 x 72 mm	190.004
Mask Ø 72 (for flush mounting-Ø 60)	190.008
Mask Ø 72 (for flush mounting-Ø 50,5)	190.009
Ring seal for IP 54	101.003
Ratchet clamp for BW 40.28	101.001



X-ON Electronics

Largest Supplier of Electrical and Electronic Components

Click to view similar products for [muller](#) manufacturer:

Other Similar products are found below :

[BW40.18 110VAC](#) [SC28.13PRO](#) [BW4018-2450](#) [190.004](#) [BW40.18 24VAC](#) [BG4017-1248](#) [SC18.10PRO](#) [BW4018-23060](#) [BW7089-23050](#)
[FRAME 55X55](#) [190.003](#) [BW4018-23050](#)