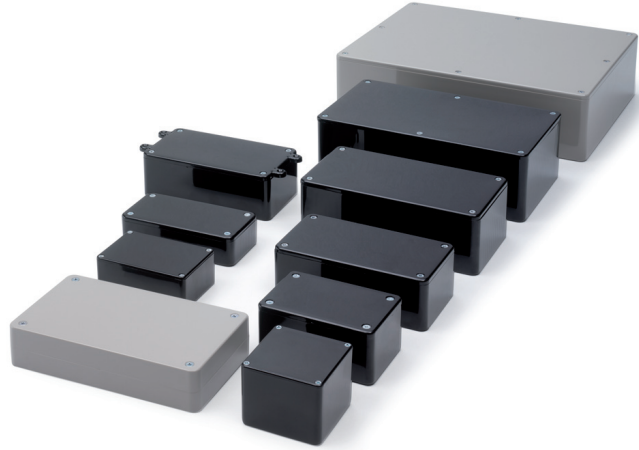


UNIVERSAL ENCLOSURES

2000 Series General Purpose ABS Cases

The most comprehensive, competitive range of general purpose electronic enclosures for universal applications.

- Polished external surfaces
- Integral card guides accept 1.6mm PCBs
- Low draught angle for mounting control elements on side walls
- Excellent characteristics for milling, drilling and cutting
- Lid mounted by four M3 machine screws into brass inserts in base
- PCB Adaptors (included) for horizontal mounting of PCBs



2000 Standard Lid

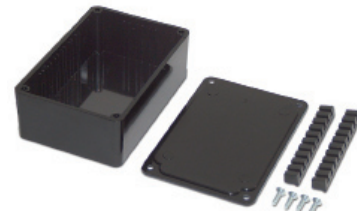
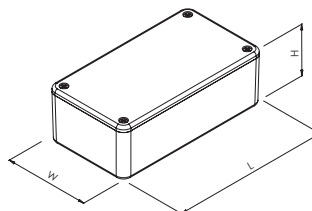
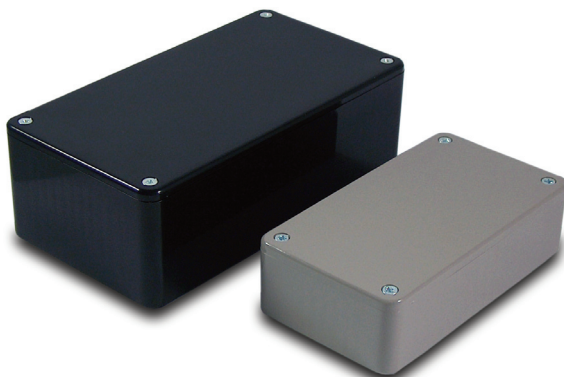
Extensive range of electronic enclosures with solid ABS lid, designed for a broad range of applications.

- Lid and Base moulded in ABS
- Lid mounted by four M3 machine screws
- Brass inserts in base for repetitive removal of the lid
- Polished finish for ease of cleaning
- Excellent properties for machining
- Integral mounting guides to accept 1.6mm PCB's
- PCB Adaptors (included) for horizontal PCB mounting

SPECIFICATION

Materials	Lid & base high impact ABS
Operating Temperature	Resistant to temperatures of up to 85°C
Protection class	IP54
Standard colours	Grey(GY), Black(BK), Ivory(WH)
Standard unit includes	Combination of colours, flame retardant Base & lid 4x M3 machine screws PCB adaptors

GREY	BLACK	IVORY	LENGTH	WIDTH	HEIGHT
BIM2008/8-GY/GY	BIM2008/18-BLK/BLK	BIM2008/18-WH/WH	55mm	55mm	42mm
BIM2000/10-GY/GY	BIM2000/10-BLK/BLK	BIM2000/10-WH/WH	75mm	50mm	27mm
BIM2001/11-GY/GY	BIM2001/11-BLK/BLK	BIM2001/11-WH/WH	85mm	56mm	39mm
BIM2002/12-GY/GY	BIM2002/2-BLK/BLK	BIM2002/12-WH/WH	100mm	50mm	25mm
BIM2003/13-GY/GY	BIM2003/13-BLK/BLK	BIM2003/13-WH/WH	112mm	62mm	31mm
BIM2007/17-GY	BIM2007/17-BLK	-	112mm	62mm	31mm
BIM2004/14-GY/GY	BIM2004/14-BLK/BLK	BIM2004/14-WH/WH	120mm	65mm	40mm
RTM2030/30-GY	RTM2030/30-BLK	-	142mm	80mm	30mm
BIM2005/5-GY/GY	BIM2005/15-BLK/BLK	BIM2005/15-WH	150mm	80mm	50mm
BIM2006/16-GY/GY	BIM2006/16-BLK/BLK	BIM2006/16-WH/WH	190mm	110mm	60mm
BIM2009/19-GY/GY	-	-	250mm	200mm	64mm



UNIVERSAL ENCLOSURES

HAND HELD CASES

HEAVY DUTY ENCLOSURES

DIN RAIL BOXES

INTERFACE SUPPORTS

CONTROL STATIONS

DIECAST & METAL BOXES

DESKTOP & INSTRUMENT CASES

POTTING BOXES

19" ENCLOSURES

19" CABINETS

DEVELOPMENT BOARDS

CUSTOM SIZED ENCLOSURES

CUSTOM SERVICES



+44 (0)1638 716101
info@camdenboss.com
www.camdenboss.com

We operate a constant improvement policy, our products are subject to change without notice.

Ver 1.0 Iss 1

CAMDENBOSS
ELECTRONICS & ENCLOSURES

X-ON Electronics

Largest Supplier of Electrical and Electronic Components

Click to view similar products for [Enclosures, Boxes, & Cases](#) *category:*

Click to view products by [Camden](#) *manufacturer:*

Other Similar products are found below :

[CR-425 PAINTED](#) [585-R-WH-PK](#) [M-10-PLATED](#) [60221-01](#) [60566-01-000](#) [HPL-9VB BATT DOOR](#) [M-16-LID-PLATED](#) [M18-PLTD](#) [M-21-LID-PLATED](#) [M-21-PLATED](#) [M-23-PLATED](#) [CU-281-MB](#) [6711GSKT](#) [71884-29-028](#) [LH45-100 Black](#) [7200B](#) [72868-510-000](#) [CNS-0000 Black](#) [72883-510-000](#) [CNS-0101 Black](#) [72906-510-000](#) [CNS-0407 Black](#) [73091-510-000](#) [CNM-0000-BLACK Kit](#) [73092-510-000](#) [CNM-0101 Black](#) [73108-510-000](#) [CNL-0303 Black](#) [73395-510-039](#) [CNS-0006 Bone](#) [74257-510-000](#) [CNL-0004](#) [MDC-1183-PLAIN-ALUM](#) [MDC-1183-PTD](#) [MDC-13104-PLAIN-ALUM](#) [MDC-211 - PAINTED IVORY/BEIGE](#) [MDC-321-PTD](#) [MDC-432-PLAIN-ALUM](#) [MDC-973-PTD](#) [76](#) [77153-01-028](#) [FLX6030](#) [83535-01-508](#) [PS-11296-G](#) [PS-11298-B](#) [116-508](#) [120-407](#) [120-412](#) [120-909](#) [120-455](#) [R272-100-000](#) [120-910](#) [R501-001-010](#) [R508-080-000](#) [R508-160-000](#) [R530-120-000](#) [R530-122-000](#) [R530-200-000](#) [R531-160-000](#) [R531-200-000](#) [R582-080-100](#)