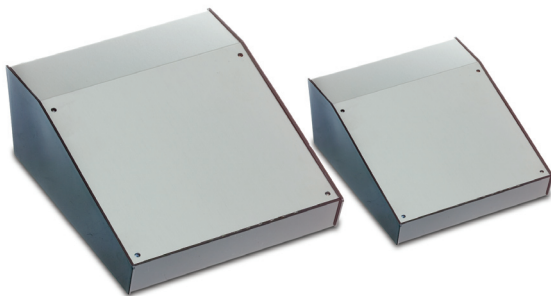


# DESKTOP & INSTRUMENT CASES

## 6000 Series Venti Cases

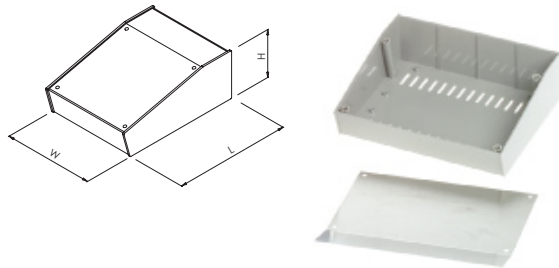
ABS desk cases available with inclined recessed aluminium front panels.

- Moulded in high impact ABS
- Aluminium lid mounted by 4x M3 screws
- Polished finish for ease of cleaning
- PCB pillars in base
- Integral PCB slots in front and rear walls
- Ventilation slots in base



| SPECIFICATION          |  |
|------------------------|--|
| Materials              | Base high impact ABS as standard, UL94-V0 ABS to order<br>Panels 1mm thick aluminium |
| Operating temperature  | Resistant to temperatures up to 85°C   |
| Standard colours       | Base grey & black as standard, white to order<br>Aluminium panel grey                |
| Standard unit includes | Base & aluminium panel<br>4x M3 machine screws<br>4x rubber feet                     |

| BLACK          | GREY          | LENGTH | WIDTH | HEIGHT |
|----------------|---------------|--------|-------|--------|
| BIM6005-BLK/PG | BIM6005-GY/PG | 143mm  | 105mm | 55mm   |
| BIM6006-BLK/PG | BIM6006-GY/PG | 143mm  | 170mm | 55mm   |
| BIM6007-BLK/PG | BIM6007-GY/PG | 214mm  | 170mm | 82mm   |



## 2600/2700 Series Terminal Cases

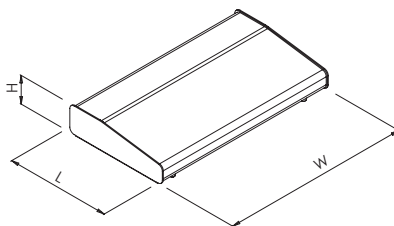
Ideal enclosures for laboratory equipment, keyboard, access & security applications.

- 2 part aluminium construction
- Easy assembly with 4x M3 screws running through rubber feet into base
- 4x rubber feet supplied as standard



| SPECIFICATION          |   |
|------------------------|---|
| Material               | Base 2mm thick aluminium<br>Lid 1.6mm thick aluminium                               |
| Protection class       | IP40  |
| Standard colours       | Top beige as standard<br>Base brown as standard<br>Other colours available to order |
| Standard unit includes | Lid & base<br>4x M3 machine screws<br>4x rubber feet                                |

| TYPE NO.     | LENGTH | WIDTH | HEIGHT |
|--------------|--------|-------|--------|
| RTM2601-BR/B | 210mm  | 178mm | 55mm   |
| RTM2602-BR/B | 210mm  | 280mm | 55mm   |
| RTM2603-BR/B | 210mm  | 381mm | 55mm   |
| RTM2604-BR/B | 210mm  | 483mm | 55mm   |
| RTM2701-BR/B | 210mm  | 178mm | 80mm   |
| RTM2702-BR/B | 210mm  | 280mm | 106mm  |
| RTM2703-BR/B | 210mm  | 381mm | 106mm  |
| RTM2704-BR/B | 210mm  | 483mm | 106mm  |



UNIVERSAL ENCLOSURES

HAND HELD CASES

HEAVY DUTY ENCLOSURES

DIN RAIL BOXES

INTERFACE SUPPORTS

CONTROL STATIONS

DIECAST & METAL BOXES

DESKTOP & INSTRUMENT CASES

POTTING BOXES

19" ENCLOSURES

19" CABINETS

DEVELOPMENT BOARDS

CUSTOM SIZED ENCLOSURES

CUSTOM SERVICES

## X-ON Electronics

Largest Supplier of Electrical and Electronic Components

*Click to view similar products for [camden manufacturer](#):*

Other Similar products are found below :

[412689X](#) [CTBP92HE/10](#) [CTBP92VE/12R](#) [CTBP9350/12](#) [IND515205-240-T/GRN](#) [IND515205-240-T/RD](#) [IND5032405-240-T/GRN](#)  
[CE10.00.EI](#) [C192SHAND](#) [RTM5006/16-PAT](#) [CNMB/6ST/2](#) [CNMB/4ST/2](#) [CSACST004](#) [CTBP9200/9](#) [CIME/M/BE2250SS](#) [CHH64E1BL](#)  
[CIM/15W-DMFS](#) [CHHBAT2GY](#) [CFTBN/2](#) [CCB2S1/04](#) [CHDX6-221C](#) [CHDX6-222C](#) [CHDX8-224](#) [CHDASMP29](#) [CHDASMP34](#)  
[CHDX810DD](#) [CHDX811DD](#) [CCTTM40LR](#) [CTBP92VJ/5S](#) [CTBP92VJ/8R](#) [CTSN431/12/M](#) [CTSN433/12/M](#) [CUABOX006](#) [IND513113-](#)  
[LED-RD](#) [CE10.00.FM](#) [CBRPH-BLK](#) [BIM2003/13-WH/WH](#) [RX2008/S-5-WH](#) [CBARD-CAR](#) [CRDCG0007](#) [CNMB/4/KIT](#) [CTB5050/5](#)  
[CTBP92HE/11](#) [CTBP9358/10AO](#) [CHH66C2GY](#) [CHH456PBK](#) [CHH451ABK](#) [CIM/9W-DMFS](#) [CIM/25W-DMFS](#) [RTM5004/14-NC-BLK](#)