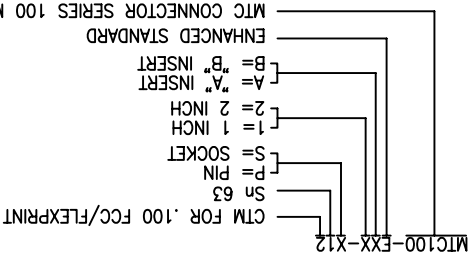


NOTES:

1. PART NUMBER VARIABLE:



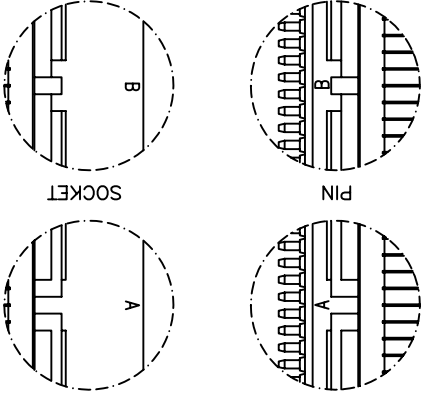
2. MATERIAL:

- A) PIN/SOCKET INSERT
- B) PIN CONTACT
- C) COPPER ALLOY PER ASTM B103, ASTM B103M (A).
- D) MODIFIED THERMOPLASTIC HOT MELT SEALANT.
- E) INTERFACIAL SEAL
- F) TERMINATION MODULE
- G) FLUOROSILICONE PER MIL-R-25988.
- H) TRANSPARENT BLUE HEAT SHRINKABLE, RADIATION
- I) AS MOLDED.
- J) GOLD PLATE PER ASTM B488, CLASS 1, TYPE 2, GRADE C.
- K) SOLDER COATED PER IPC J-STD 006 (Sn63).
- L) FLUX COATED PER IPC J-STD 006, TYPE RMA.

3. FINISH:

- A) NUMBER ONE POSITION IS SHOWN IN CONTRASTING COLOR ON INTERFACE.
- 5. THESE INSERTS MEET THE REQUIREMENTS OF RAYCHEM SPECIFICATION C-6111.

WEIGHT		DIM. "Y"		DIM. "Z"	
SIZE	MAXIMUM	GRAMS	MAXIMUM	1.05	1.15
1 INCH	PIN .0053	2.404	1.15	1.05	1.15
2 INCH	PIN .0103	4.7	2.722	1.05	1.15
INSERT	SOC. .0060	2.722	[29.2]	[26.7]	[26.7]
INSERT	SOC. .0119	5.398	2.15	2.05	2.05
INSERT	SOC. .0119	5.398	[54.6]	[52.1]	[52.1]



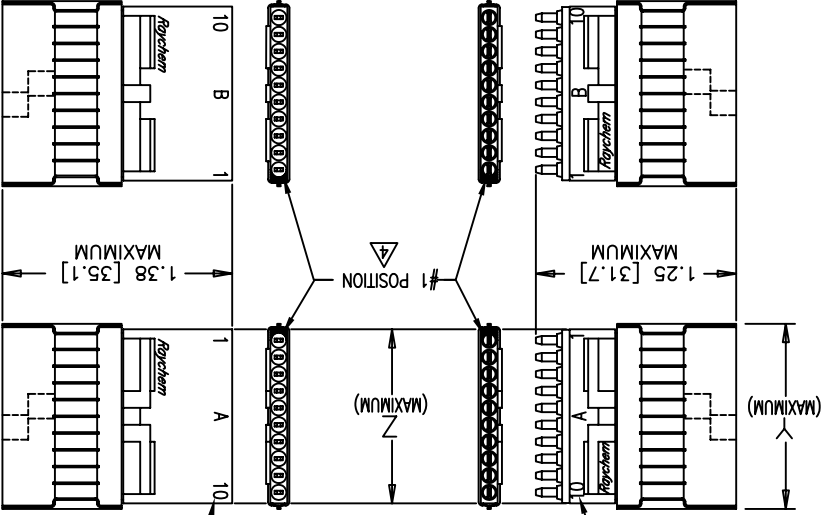
AUXILIARY VIEW OF 2 INCH INSERT KEYS/KEYWAYS



REVISIONS

LTR	DESCRIPTION	DATE	APPROVED
D	REVISED PER ECN T-19487	FEB-08-05	M. HIGGY
E	PER ECO-10-004620	MAR-3-2010	M. HIGGY

#10 (SHOWN) FOR 1 INCH INSERT
#20 FOR 2 INCH INSERT

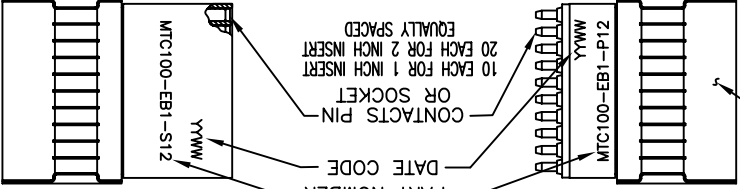


PIN INSERT

INTERFACIAL SEAL

SOCKET INSERT

TERMINATION MODULE COMMON TO PIN AND SOCKET ASSEMBLIES (INCLUDES CABLE AND INSERT SEALS)



CONTACTS PIN OR SOCKET
20 EACH FOR 1 INCH INSERT
10 EACH FOR 2 INCH INSERT
EQUALLY SPACED

DATE CODE
PART NUMBER
MTC100-EB1-S12

© 2010 Tyco Electronics Corporation. All rights reserved. CUSTOMER DRAWING

DRAWN	CHECKED	APPROVED	APPROVED	CAD NAME	THIRD ANGLE PROJECTION
LUTTKEN	J.B.	J.BLAIR	B7OCT02	MTC100-EXX-X12	

UNLESS OTHERWISE SPECIFIED METRIC DIMENSIONS ARE IN INCHES. DIMENSIONS ARE IN BRACKETS. DECIMALS .XXX ± .005 .XX ± .13 mm ANGLES X ± WEIGHT: MAXIMUM SEE TABULATION

REV	SIZE	SCALE	NO. OF SHEETS
E	A	NONE	1 OF 1

Raychem Interconnect
300 Constitution Drive
Menlo Park, CA 94025 U.S.A.

Tyco Electronics
ASSEMBLY, INSERT,
FLAT CABLE TERMINATION,
TEMPERATURE RATING 125 CELSIUS DEGREE
MTC 100 SERIES
MTC100-EXX-X12

X-ON Electronics

Largest Supplier of Electrical and Electronic Components

Click to view similar products for [Rack & Panel Connectors](#) category:

Click to view products by [TE Connectivity](#) manufacturer:

Other Similar products are found below :

[00170420102](#) [00171420202](#) [00171440002](#) [008026165000265](#) [00-8219-072-000-112P44](#) [008219072000112P5](#) [008219072000112P61](#) [00-8223-096-580-102](#) [02-014-013-5200-000](#) [00-8129-015-610-108](#) [613467-000](#) [CTJ112E01E-513](#) [CTJ116E03A-513](#) [M81714/63-22S L/C](#) [M81714/65-12-1](#) [66020-2](#) [CW8958-000](#) [699886-000](#) [D250-50632](#) [70.400.3240.0](#) [70.955.2453.3](#) [733753-000](#) [F22831-000](#) [780-522-DPX34RG8-02](#) [MMA25-0051R1](#) [MMA25-0341D1](#) [8660-501](#) [87.060.0053.0](#) [900709N001](#) [QRP4-12P-C\(01\)](#) [QR/P6-6S-C\(01\)](#) [AC-600003-004](#) [1218600-1](#) [D-659-0061](#) [DMC-MD 24 C-T](#) [1-445717-6](#) [1484398-2](#) [1484399-2](#) [1484469-2](#) [MR-34MG](#) [1484225-1](#) [1484398-1](#) [1484510-4](#) [1604997-2](#) [1663130-1](#) [1663767-7](#) [1663767-8](#) [MTC100-BF1-P31CS015](#) [MTC100-KT2-0083](#) [MTC100-KT2-0123-003](#)