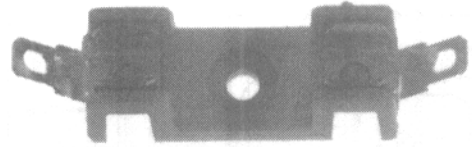


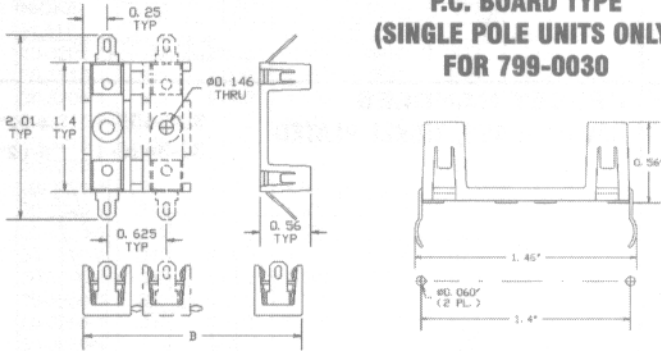
# FUSES BLOCKS

## MOLDED BASE SOLDER TYPE TERMINAL

- Gray Polyester glass reinforced base UL94VO flammability rating.
- Individual pole barriers for greater protection against clip damage and electrical shock.
- Minimum dielectric of 1500 volts RMS.
- Twelve pole units may be broken apart to obtain desired number of poles.
- Terminals, tin plated spring brass.
- Recognized under components program of underwriters labs and certified by CSA up to 300 V and @ current rating of 15 A.



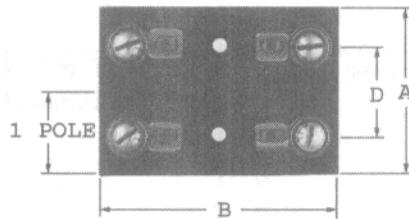
### P.C. BOARD TYPE (SINGLE POLE UNITS ONLY) FOR 799-0030



| PART NO. | NO. OF POLES | DIMENSION B |
|----------|--------------|-------------|
| 799-0030 | 1            | .50         |
| 799-0031 | 1            | .50         |
| 799-0032 | 2            | 1.12        |
| 799-0033 | 3            | 1.75        |
| 799-0034 | 4            | 2.38        |
| 799-0035 | 5            | 3.00        |
| 799-0036 | 6            | 3.63        |
| 799-0037 | 7            | 4.25        |
| 799-0038 | 8            | 4.88        |
| 799-0039 | 9            | 5.50        |
| 799-0040 | 10           | 6.13        |
| 799-0041 | 11           | 6.75        |
| 799-0042 | 12           | 7.38        |

## LAMINATED BASE

WITH SCREW TERMINAL FOR 3AG FUSES  
 15 Amp - UL approved  
 Nickel plated spring brass clips  
 8-32 th'd screw type terminal  
 Black phenolic laminate base with UL94VO  
 flammability rating Mtg hole .142/.147 dia.  
 with .295/.302 x 82°C sink.

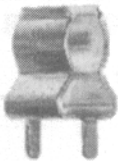


| PART NO. | A    | B    | D   | NO OF POLES |
|----------|------|------|-----|-------------|
| 799-0051 | .78  | 2.38 | .91 | 1           |
| 799-0052 | 1.69 | 2.38 | .91 | 2           |

BOARD THICKNESS .25  
 OVERALL HEIGHT .69

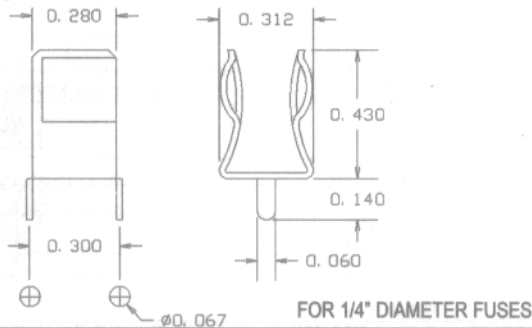
## FUSE CLIPS

### P.C. BOARD TYPE



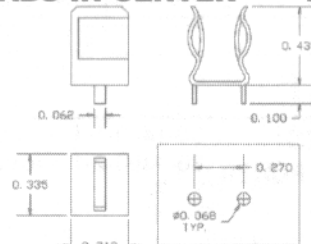
PART NO. STYLE  
 799-0061 EAR  
 799-0062 EARLESS  
 MATERIAL SPRING, BRASS TIN PLATED

EAR TYPE ONLY SHOWN



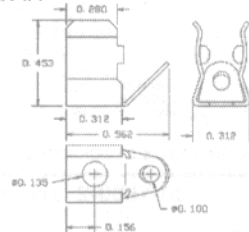
### P.C. TABS IN CENTER

P/N 707-0830



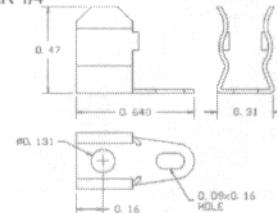
### 45° ANGLE TYPE P/N 799-0065

FUSE DIAMETER 1/4"



### STRAIGHT TYPE P/N 799-0066

FUSE DIAMETER 1/4"

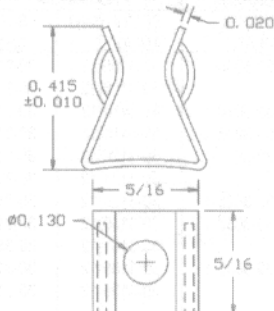


## RIVET/EYELET MOUNT



PART NO. STYLE  
 799-0063 EAR  
 799-0064 EARLESS

EAR TYPE ONLY SHOWN



## X-ON Electronics

Largest Supplier of Electrical and Electronic Components

*Click to view similar products for [Fuse Holder Accessories](#) category:*

*Click to view products by [Concord](#) manufacturer:*

Other Similar products are found below :

[BK/1A1337](#) [BK/2A1460](#) [BO2-02](#) [BP/FP-2](#) [903-048](#) [9732](#) [CO2-10](#) [CO3-03](#) [B001-7018/J](#) [BK/1A1853](#) [BK/1A4421](#) [BK/1A6049](#) [BK/9732](#)  
[BO3-03](#) [X30110](#) [09030012H](#) [0904216001](#) [09050023H](#) [FHM20200ZPA](#) [FHM20200Z](#) [BK/9834](#) [901-108](#) [00970021HXNVDL](#) [00BS0232P](#)  
[CO2-04](#) [BK1A1853](#) [BK9835](#) [BK-HHT](#) [BK9834](#) [BK1A4806-2](#) [0880.0001](#) [00970053XP](#) [3566C](#) [04450718ZX900](#) [BP/FP-3](#) [B001-7007/J](#)  
[BO4-05](#) [359.5900.087](#) [868-951](#) [868-952](#) [868-953](#) [868-955](#) [868-956](#) [868-957](#) [58600000005](#) [33-012C](#) [09230025LXREDM8](#) [01520903TXN](#)  
[882-267-002](#) [882-267-003](#)