


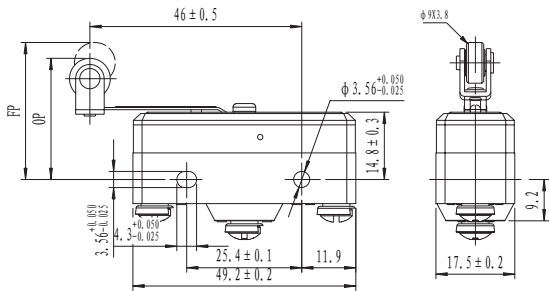

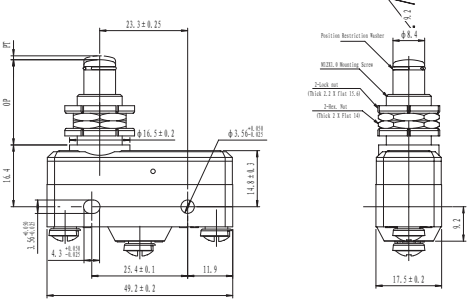

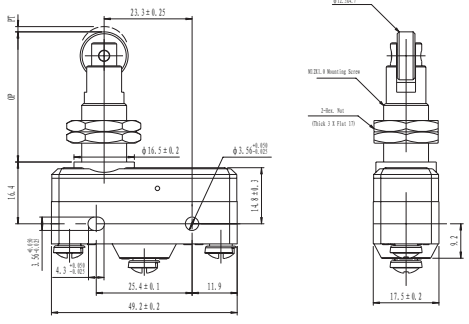

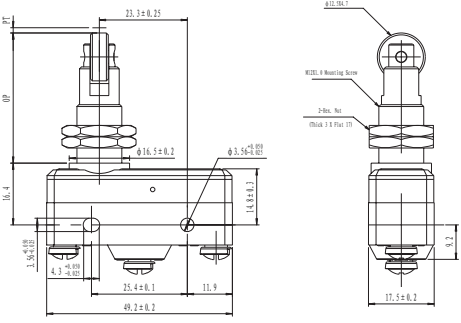

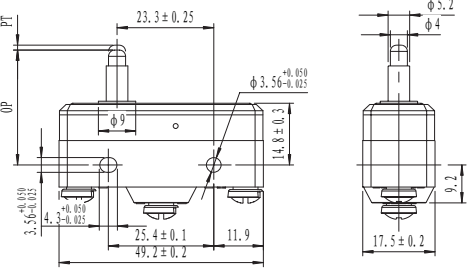
SPECIFICATION

Operating Frequency	mechanically 240 ops/min electrically 20 ops/min
Service Life	mechanically 1×10^6 (ops.) electrically 5×10^5 (ops.)
Electrical Rating	15A@ 250VAC
Rated Voltage	600VAC
Ambient Humidity	-20~+80°C (-4~176°F)
Dielectric Strength	2500VAC 50/60Hz (For 1 min)
Dielectric Strength	IP63
Definition Of Characteristics	
OF Operation Force	PT Pre-Travel
RF Releasing Force	MD Movement Differential
OT Over-Travel	OP Operation Position
TT Total-Travel	PO Travel to Positive Opening

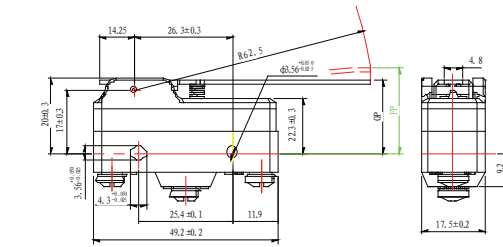


DIMENSIONS

<p>BZC-2R-A2</p>		<p>Operating Characteristics</p> <ul style="list-style-type: none"> ● OF_{max} 3.61N ● RF_{min} 1.11N ● PT_{max} 0.4mm ● OT_{min} 0.13mm ● MD_{max} 0.05mm ● OP 15.9±0.4mm
<p>BZC-2RD-A2</p>		<p>Operating Characteristics</p> <ul style="list-style-type: none"> ● OF_{max} 3.61N ● RF_{min} 1.11N ● PT_{max} 0.4mm ● OT_{min} 1.52mm ● MD_{max} 0.05mm ● OP 21.5±0.5mm
<p>BZC-2RL-A2</p>		<p>Operating Characteristics</p> <ul style="list-style-type: none"> ● OF_{max} 1.39N ● RF_{min} 0.14N ● OT_{min} 1.52mm ● MD_{max} 1.27mm ● FP_{max} 20.6mm ● OP 17.4±0.8mm

<p>BZC-2RL2-A2</p> 		<p>Operating Characteristics</p> <ul style="list-style-type: none"> • OF_{max} 1.39N • RF_{min} 0.14N • OT_{min} 1.6mm • MD_{max} 1.27mm • FP 31.8mm • OP 28.6 ± 0.8mm
<p>BZC-2RQ1-A2</p> 		<p>Operating Characteristics</p> <ul style="list-style-type: none"> • OF_{max} 3.61N • RF_{min} 1.11N • PT_{max} 0.4mm • OT_{min} 5.56mm • MD_{max} 0.05mm • OP 21.8 ± 0.8mm
<p>BZC-2RQ18-A2</p> 		<p>Operating Characteristics</p> <ul style="list-style-type: none"> • OF_{max} 3.61N • RF_{min} 1.11N • PT_{max} 0.4mm • OT_{min} 3.6mm • MD_{max} 0.05mm • OP 33.3 ± 1.1mm
<p>BZC-2RQ181-A2</p> 		<p>Operating Characteristics</p> <ul style="list-style-type: none"> • OF_{max} 3.61N • RF_{min} 1.11N • PT_{max} 0.4mm • OT_{min} 3.6mm • MD_{max} 0.05mm • OP 33.3 ± 1.1mm
<p>BZC-2RS-A2</p> 		<p>Operating Characteristics</p> <ul style="list-style-type: none"> • OF_{max} 3.61N • RF_{min} 1.11N • PT_{max} 0.4mm • OT_{min} 1.52mm • MD_{max} 0.05mm • OP 28.2 ± 0.6mm

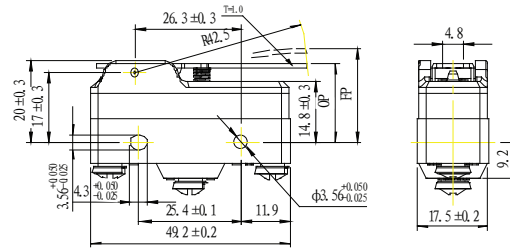
BZC-2RW80-A2



Operating Characteristics

- OF_{max} 0.69N
- RF_{min} 0.14N
- OT_{min} 5.6mm
- MD_{max} 2mm
- FP_{max} 28.2mm
- OP 19.05±0.8mm

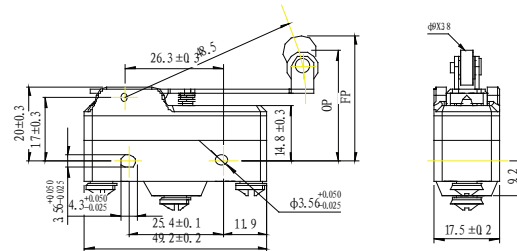
BZC-2RW876T



Operating Characteristics

- OF_{max} 1.03N
- RF_{min} 0.21N
- OT_{min} 3.7mm
- MD_{max} 0.85mm
- FP_{max} 24.5mm
- OP 19.05±0.5mm

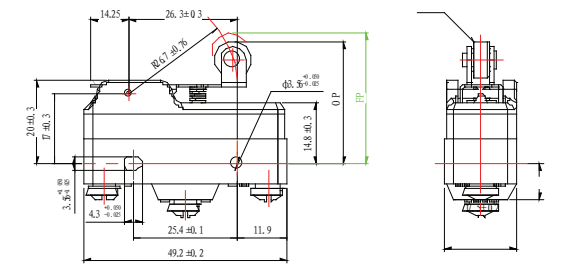
BZC-2RW82-A2



Operating Characteristics

- OF_{max} 0.98N
- RF_{min} 0.21N
- OT_{min} 4mm
- MD_{max} 1.02mm
- FP_{max} 36.5mm
- OP 30.2±0.8mm

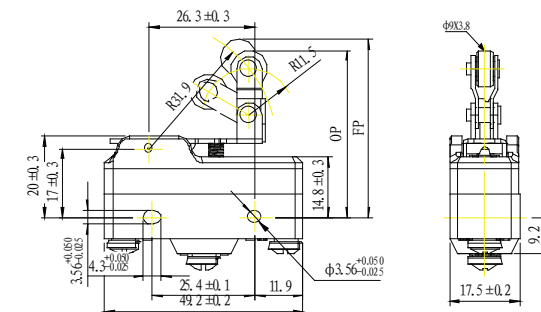
BZC-2RW822-A2



Operating Characteristics

- OF_{max} 1.67N
- RF_{min} 0.42N
- OT_{min} 2.4mm
- MD_{max} 0.8mm
- FP_{max} 32.5mm
- OP 30.2±0.4mm

BZC-2RW826-A2



Operating Characteristics

- OF_{max} 1.67N
- RF_{min} 0.41N
- OT_{min} 2.4mm
- MD_{max} 0.8mm
- FP_{max} 43.5mm
- OP 41.3±0.8mm

X-ON Electronics

Largest Supplier of Electrical and Electronic Components

Click to view similar products for [honeywell](#) manufacturer:

Other Similar products are found below :

[MML93J](#) [3010A](#) [LZJ3-7M](#) [LTPCTAA50UEBITX01](#) [MPRLS0001PG0000SAB](#) [LZZ7J3-7M](#) [76072-00000150-15](#) [NSCDRRN030PDUNV](#)
[NSCDRRN001PGUNV](#) [14CE2-2](#) [91MCE2-S5](#) [SE3450-013](#) [GLLA06A1B](#) [3600080010001](#) [23944-01](#) [53C110K](#) [58C1-25](#) [58C1-3K](#)
[591SXP56S252SC](#) [5ML1-E1](#) [5SE1-12](#) [602HE1-6](#) [604HE223-6B](#) [61CX11-D01](#) [624HE17-RB](#) [M3050A13](#) [64AT22-3D](#) [66AT23-7](#) [6AT3-T](#)
[6HM7-6](#) [MA215HT-96](#) [6PA104](#) [6PA148-E6](#) [701PB580](#) [70B1N056S202W](#) [727033](#) [EXD-AR20](#) [MD3211Q16](#) [76054-00000700-01](#) [76061-](#)
[00000015-15](#) [76061-B00000020-01](#) [76078-00000350-01](#) [76078-B00000400-01](#) [76580-00000130-01](#) [76584-M00000100-24](#) [F78EA502](#)
[F78SA102-B1](#) [77028-00001500-01](#) [77050-04000400-01](#) [78148-B00001000-01](#)