

### CONTACT ARRANGEMENT

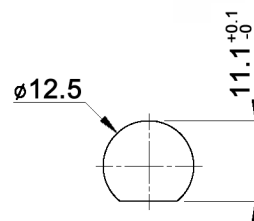
code for x	function	toggle towards flat	toggle opposite to flat
N	On-On	1-2, 4-5	2-3, 5-6
R	Mom-On	1-2, 4-5	2-3, 5-6

code for x	function	toggle towards flat	toggle in center	toggle opposite to flat
P	On-Off-On	1-2, 4-5	open	2-3, 5-6
S	Mom-Off-Mom			
T	Mom-Off-On			
PA	On-On-On	1-2, 4-5	2-3, 4-5	2-3, 5-6
SA	Mom-On-Mom			
TA	Mom-On-On			

### Specifications:

**Contact rating:** 3A, 250V AC / 6A, 125V AC  
 4A, 30V DC / 5A, 12V DC  
 6A, 6V DC  
**Contact resistance:** 20mOhm max.  
**Insulation resistance:** 1 000MOhm min. at 500V DC  
**Dielectric strength:** 1 500V, 50Hz for the duration of 1 minute  
**Operating temperature:** -45°C to +140°C  
**Mechanical life:** min. 100 000 cycles  
**Soldering conditions:** hand-soldering: max.: 420°C, 3sec., 60W  
 auto-soldering: max.: 270°C, 5sec.  
**Mounting instruction:** max. torque: 137Ncm  
**IP rating:** IP67  
**Material:** Terminal / contact: brass, silver plated  
 Case: DAP  
 Housing: stainless steel, CNS9265  
 Bushing: copper alloy, C3604BD nickel plated  
 Actuator: copper alloy, C3604BD chrome plated  
**Included accessories:** 1 pc. nut 15/32-32, nickel plated, 14mm wrench size  
 1 pc. tooth washer  
 1 pc. O-ring, silicone

### PANEL MOUNTING



### Compliance: RohS II (2011/65/EU)

Tolerances:	Date	Name
0.00: ±0.25mm	05/09	dr
0.0: ±0.40mm		
Modifications	Date	Name

# MTW 206 x

## 30 18 23

Page

1/1

**knitter-switch**

## X-ON Electronics

Largest Supplier of Electrical and Electronic Components

*Click to view similar products for [Toggle Switches](#) category:*

*Click to view products by [Knitter-Switch](#) manufacturer:*

Other Similar products are found below :

[A19HV](#) [8A1-C-222](#) [60012L](#) [6006L](#) [6663](#) [7101MD9V30GE](#) [7101SPDV30BE](#) [7103SDV30BE](#) [7105D](#) [7108P3YAV2BE](#) [71YY50282](#)  
[7201MD9AVBE](#) [7301K38](#) [7306K36](#) [7310K36](#) [7314K36](#) [7506K4](#) [7592K6](#) [7691K14](#) [7700K1](#) [8396K108](#) [8824K14](#) [8828K13](#) [G2VX](#) [G3VX](#)  
[PS83-121G](#) [A101MD9AB04](#) [A101SD9AB04](#) [A101SDCQ04](#) [A103SD9AQ04](#) [A107TZB04](#) [A123P32YZQ](#) [A123S1YZG](#) [A127S1YCQ](#) [1-](#)  
[1825192-0](#) [A131S1YZQ](#) [A201SCWZB04](#) [A207SYCB04](#) [A208J61ZQ0004](#) [A221K12KAG](#) [A221S1YZQ](#) [A221T1TCQ](#) [A232K12KZQ](#)  
[A232M1YCQ](#) [A323S1CWZQ](#) [A423S1CWZG-M8](#) [A423S1YZQ](#) [12149A-3V](#) [12156AX408](#) [12147AGKX679](#)