



Home	Products	Enquiry Form	Contact Us	The Company	Quality
----------------------	--------------------------	------------------------------	----------------------------	-----------------------------	-------------------------

Standard Brass Ended

Our standard range of BS89/IEC51 class 1 or class 0.5 shunts can be current rated from 5A to 10000A with 50mV to 300mV output.

Technical Specification

Operating Temperature: -20°C TO +40°C

Permissible Overload:

Continuous

1.2 x rated current

5 seconds

5 x rated current up to 2kA

10 seconds

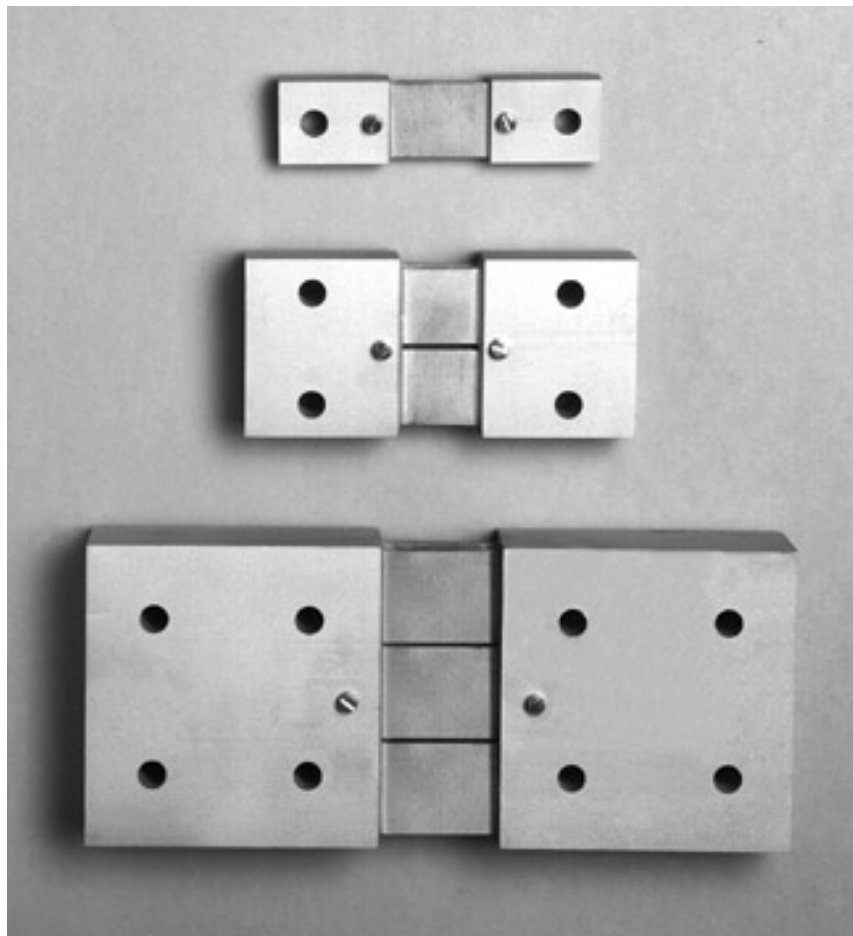
2 x rated current for 2kA-5kA

Shunt Leads:

Millivolt leads can be supplied upon request (standard length = 760mm)

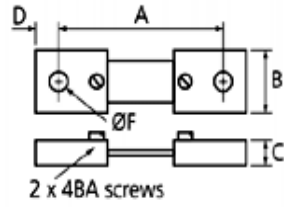
Order example:

A brass ended shunt with 1000A rated current and 100mV output, class 1 is:
SHB1000A100-CLASS1

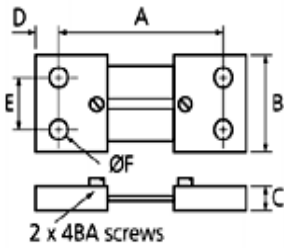


Dimensions (mm)

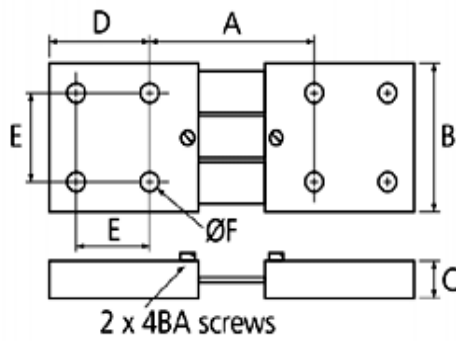
Current (A)	A									B	C	D	E	F
	Type	50mV	60mV	75mV	100mV	150mV	200mV	250mV	300mV					
5-35	1	95	95	95	114	114	172	172	167	22	10	11	-	7
40-200	1	95	95	95	114	114	172	172	267	32	12	13	-	10
225-440	1	95	95	95	114	121	172	172	267	32	20	25	-	10
450-1700	2	95	95	95	114	121	172	172	267	67	25	25	41	10
1800-3400	3	95	95	95	114	121	172	-	-	111	38	81	57	10
3500-5000	3	95	95	95	114	121	-	-	-	140	38	114	90	12
5500-7000	4	83	83	96	-	-	-	-	-	230	38	114	90	12
7500-10000	5	83	83	96	-	-	-	-	-	320	38	114	90	12



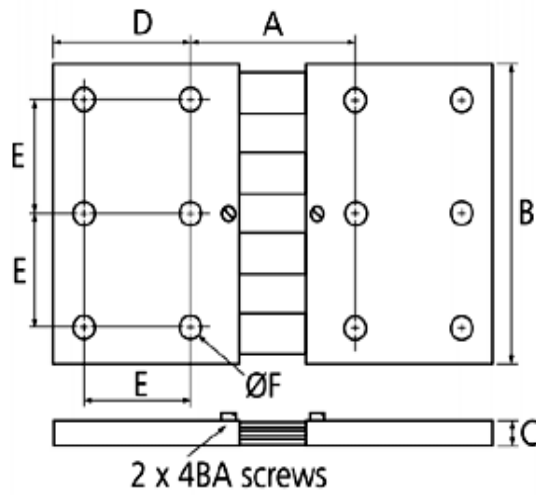
Type 1



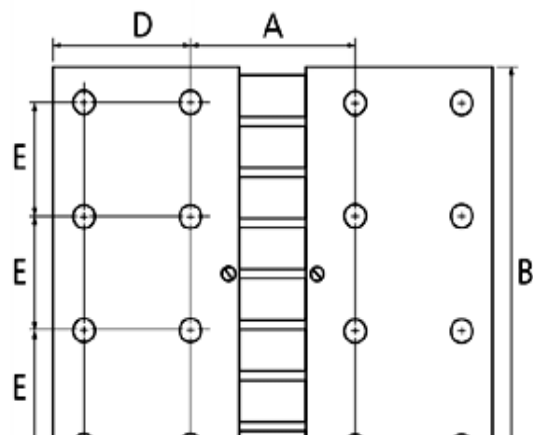
Type 2



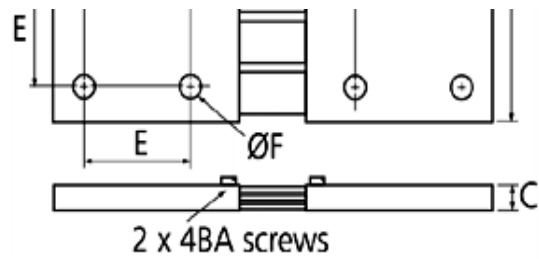
Type 3



Type 4



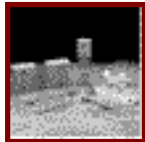
Type 5



[Sales Enquiry](#)



[Home](#)



[Main Shunt Page](#)

Contact sales: sales@hobut.co.uk

X-ON Electronics

Largest Supplier of Electrical and Electronic Components

Click to view similar products for [hobut](#) manufacturer:

Other Similar products are found below :

[PD72MIS500V/2/938-658](#) [M850-LTHN-RS-PO](#) [D48A25](#) [SHB60A60-CLASS 1](#) [CT132TRAN10A-5/10V](#) [CT105F-150/5-2.5/1](#) [D72M50](#)
[CT105F-100/5-2.5/1](#) [CT132TRAN20A-4/20MA](#) [CT160-5-H7](#) [F3PAM602-15V](#) [D72D60ADC](#) [F3PAM602-10A](#) [F3PAM602-20A](#)
[F3PAM602-5A](#)