

## OptiFiber® Certifying OTDR Accessories Guide



*See how  
Fluke Networks'  
options and  
accessories can  
enhance your  
investment.*

## Contents

Singlemode and Multimode Modules . . .	1
Smart Remote Options . . . . .	2
FiberInspector™ Pro Video Probe and Tips . . . . .	3
Optional Launch and Receive Fibers . . .	4
Fiber Accessories . . . . .	5
Optional Fiber Optic Sources . . . . .	6
LinkWare Software . . . . .	7
Carrying Cases . . . . .	7
OptiFiber Accessories . . . . .	8
Fiber Mandrels . . . . .	9
Fiber Cleaning Kit . . . . .	9
Network SuperVision Gold Support . . . .	10

OptiFiber test modules combine the right capabilities for your fiber testing needs. Choose from multimode or singlemode OTDR modules and add a power meter (PM) and far end source for power and loss measurements or bi-directional Loss/Length capability.

OFTM-5610B	Multimode OTDR module
OFTM-5611B	Multimode OTDR module with PM
OFTM-5612B	Multimode OTDR module with PM/LL
OFTM-5730	Singlemode OTDR module with VFL
OFTM-5731	Singlemode OTDR module with PM/VFL
OFTM-5732	Singlemode OTDR module with PM/LL/VFL



**Singlemode and multimode modules**

# Smart Remote Options

## Increase Loss/Length certification testing with OptiFiber Smart Remote options

Only OptiFiber offers an OTDR module that integrates both OTDR certification and Loss/Length certification, minimizing the number of tools you need to carry with you into the field. Industry standards require certification with a power meter and source that can measure the Loss and Length of a fiber optic link. OptiFiber Smart Remote options provide just what you need to meet this requirement.

- OFSR-MMREM OptiFiber Smart Remote with multimode module bundle
- OFSR-SFM Singlemode module for OptiFiber Smart Remote
- OFSR-MFM Multimode module for OptiFiber Smart Remote



Smart Remote

# FiberInspector™ Pro Video Probe and Tips

## Inspect fiber connections quickly and safely

Add FiberInspector Pro to your OptiFiber to see the condition of the fiber endface. View endfaces under 250x or 400x magnification. Inspect fibers installed in patch panels and devices easily with one integrated tool. And, it's safer on your eyes, too. To learn more about FiberInspector Pro, visit our website at [www.flukenetworks.com/fiberinspector](http://www.flukenetworks.com/fiberinspector).

OFTM-5352	FiberInspector Pro video probe (250x/400x)
NF362	LC video probe adapter tip
NF364	Optional MU adapter tip for inspecting MU small form factor connectors
NF366	E2000 video probe adapter tip

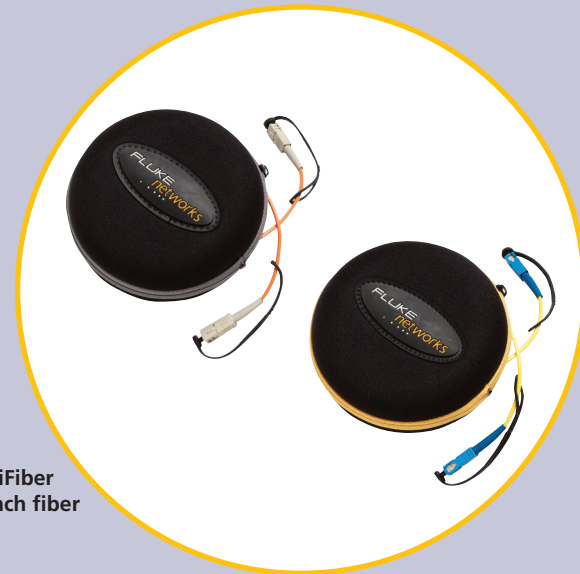


**FiberInspector Pro  
Video Probe**

# Optional Launch and Receive Fibers

OTDRs require the use of long launch fibers at the beginning and/or end of a fiber link in order to measure the loss and reflectance of connectors at the ends of the fiber being tested. Fluke Networks' launch fibers come in a small convenient protective case and are available in common fiber and connector types.

NFK1-LAUNCH	SC/SC launch fiber, 62.5 $\mu\text{m}$ , 100 m
NFK2-LAUNCH	SC/SC launch fiber, 50 $\mu\text{m}$ , 100 m
NFK3-LAUNCH	SC/SC launch fiber, SM, 130 $\mu\text{m}$
NFK1-LAUNCH-ST	SC/ST launch fiber, 62.5 $\mu\text{m}$
NFK1-LAUNCH-LC	SC/LC launch fiber, 62.5 $\mu\text{m}$
NFK1-LAUNCH-FC	SC/FC launch fiber, 62.5 $\mu\text{m}$
NFK2-LAUNCH-ST	SC/ST launch fiber, 50 $\mu\text{m}$
NFK2-LAUNCH-LC	SC/LC launch fiber, 50 $\mu\text{m}$
NFK2-LAUNCH-FC	SC/FC launch fiber, 50 $\mu\text{m}$
NFK2-LAUNCH-E2K	SC/E2000 launch fiber, 50 $\mu\text{m}$
NFK3-LAUNCH-ST	SC/ST launch fiber SM
NFK3-LAUNCH-LC	SC/LC launch fiber SM
NFK3-LAUNCH-FC	SC/FC launch fiber SM
NFK3-LAUNCH-E2K	SC/E2000 launch fiber SM

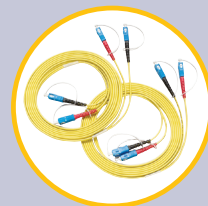


**OptiFiber  
launch fiber**

# Fiber Accessories

## Duplex fiber test reference cords for OptiFiber singlemode and multimode modules

Fluke Networks' test reference cords are specially configured for accurate and efficient bi-directional testing. Connector end faces are hardened to increase durability and ensure good reference measurements. Test reference cords come in sets of two and include mandrels as appropriate. They are available in all common fiber and connector types.



Duplex fiber test reference cords

NFB1/2-LC&ST	A kit containing all TRCs to test 62.5 and 50 $\mu\text{m}$ fiber installations using LC and ST	NFK2-DPLX-LC	Duplex MM 50 $\mu\text{m}$ TRC for LC adapter, set of two
NFK1-DPLX-SC	Duplex MM 62.5 $\mu\text{m}$ TRC for SC adapter, set of two	NFK2-DPLX-ST	Duplex MM 50 $\mu\text{m}$ TRC for ST adapter, set of two
NFK1-DPLX-LC	Duplex MM 62.5 $\mu\text{m}$ TRC for LC adapter, set of two	NFK2-DPLX-FC	Duplex MM 50 $\mu\text{m}$ TRC for FC adapter, set of two
NFK1-DPLX-ST	Duplex MM 62.5 $\mu\text{m}$ TRC for ST adapter, set of two	NFK3-DPLX-SC	Duplex SM TRC for SC adapter, set of two
NFK1-DPLX-FC	Duplex MM 62.5 $\mu\text{m}$ TRC for FC adapter, set of two	NFK3-DPLX-LC	Duplex SM TRC for LC adapter, set of two
NFK2-DPLX-SC	Duplex MM 50 $\mu\text{m}$ TRC for SC adapter, set of two	NFK3-DPLX-ST	Duplex SM TRC for ST adapter, set of two
		NFK3-DPLX-FC	Duplex SM TRC for FC adapter, set of two

## Interchangeable power meter adapters for OptiFiber modules and Smart Remote

Interchangeable power meter adapters facilitate testing different connector types with a one jumper test method. They are compatible with singlemode and multimode OptiFiber test modules, smart remote options, as well as DTX fiber modules.



Fiber test adapters

NFA-SC	SC test adapters, set of two	NFA-ST	ST test adapters, set of two
NFA-LC	LC test adapters, set of two	NFA-FC	FC test adapters, set of two

# Optional Fiber Optic Sources

SimpliFiber light sources enable loss measurements with OptiFiber test modules featuring a power meter. Choose from dual wavelength multimode source or 1310 nm or 1550 nm singlemode sources. OptiFiber automatically detects the selected wavelength of SimpliFiber sources.

- 8251-13      SimpliFiber 850/1300 Source with SC adapter; dual wavelength incorporates an 850 nm LED and a 1300 nm LED
- 8251-11      SimpliFiber 1310 Source with SC adapter; uses laser light source at 1310 nm
- 8251-12      SimpliFiber 1550 Source with SC adapter; uses laser light source at 1550 nm



**SimpliFiber  
Sources**

# LinkWare Software and Carrying Cases

Create professional reports that meet new certification demands, impress your customers and give you a competitive edge

LinkWare LinkWare™ Cable Test Management Software is a free download at [www.flukenetworks.com/linkware](http://www.flukenetworks.com/linkware)

LinkWare-Stats LinkWare Stats: statistical report option for advanced results analysis. For a demo, visit [www.flukenetworks.com/lwstats](http://www.flukenetworks.com/lwstats)



LinkWare Software

## OptiFiber Carrying Cases

- OFCC-HCASE OptiFiber hard case
- OFCC-SOFTCASE OptiFiber protective carrying case
- NF400 Fiber accessories carrying case



OptiFiber hard case



# OptiFiber Accessories

## OptiFiber Battery and Charger

OFBP-LI	OptiFiber Li-Ion Battery
800695	Adapter cable for cigarette lighter jacks

## OptiFiber Memory Cards and Readers

DSP-MMC32	32 MB multimedia memory card
DSP-MCR-U	Multimedia memory card reader, USB cable

## OptiFiber Keyboard

OPV-KB	Mini keyboard
--------	---------------



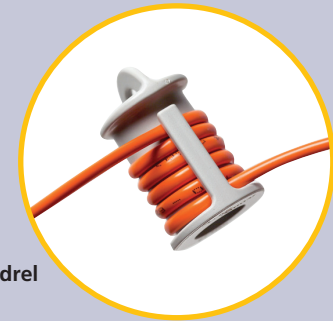
Multimedia memory card reader, USB cable

# Fiber Mandrels and Fiber Cleaning Kit

## Improve fiber measurement, consistency and repeatability

Fluke Networks' multimode fiber mandrels offer a simple and cost-effective way to improve the repeatability and consistency of multimode optical power and loss measurements when using a LED source. Using mandrels ensures that good fibers don't fail due to erroneously high reference values.

NF-MANDREL-50	Red Multimode Fiber Mandrel for 50 $\mu\text{m}$ fiber with 3 mm jackets
NF-MANDREL-625	Gray Multimode Fiber Mandrel for 62.5 $\mu\text{m}$ fiber with 3 mm jackets
NFK1-MANDREL-KIT	Multimode Fiber Mandrel kit containing two red 50 $\mu\text{m}$ mandrels and two gray 62.5 $\mu\text{m}$ mandrels



Fiber mandrel

## Ensure all optical connections are clean and free of contaminants

NF430	Fiber Optic Cleaning Kit includes alcohol-soaked cleaning pads, 2.5 mm foam-tipped cleaning sticks, large foam-tipped cleaning swabs, lint-free cotton wipes, small bottle for isopropyl alcohol (shipped empty).
-------	---



Fiber Optic Cleaning Kit

# Network SuperVision Gold Support

## Network SuperVision Gold Support

Our Network SuperVision Gold Support Membership Program ensures a better return on your investment by lowering your cost of ownership. You'll minimize your downtime with loaner or exchange equipment and unlimited 24x7 telephone technical assistance. You'll get repairs and software/firmware upgrades – now and for as long as your membership is valid. To learn more about our gold support membership and its benefits visit [www.flukenetworks.com/goldsupport](http://www.flukenetworks.com/goldsupport).

GLD-OF-500-XX	Covers all OptiFiber Bundles (includes coverage on mainframe, all modules, remotes and cameras)
GLD-OF	Covers the OF-500 OptiFiber mainframe
GLD-OFTM-56XX	Covers any individually purchased OptiFiber 56XX module
GLD-OFTM-57XX	Covers any individually purchased OptiFiber 57XX module
GLD-OFSR-MM-REM	Covers any individually purchased OFSR-MMREM
GLD-OFSR-REMOEMOD	Covers the OFSR-SFM or OFSR-MFM
GLD-OFTM-53XX	Covers any individually purchased OptiFiber probe kit

## DTX CableAnalyzer™ Series

Significantly reduce total time to certify with 9-second Cat 6 Autotest, Level IV Accuracy, 900 MHz, and intuitive troubleshooting. DTX – It's all about time!

## SimpliFiber™ Optical Loss Test Kits

Test and troubleshoot fiber links with SimpliFiber Optical Loss Test Kits. Measure loss and power levels, locate faults and polarity issues, and inspect connector endfaces.

## IntelliTone™ Pro Toner & Probe

IntelliTone Pro gives you SuperVision for locating cable hidden in floors, ceilings, walls, and in bundles. IntelliTone Pro finds the cables others can't.

## MicroScanner® Pro

The essential cable verification tester for verifying and troubleshooting cabling media.

Check our complete line of SuperVision products like these at [www.flukenetworks.com](http://www.flukenetworks.com)



DTX CableAnalyzer™ Series



IntelliTone™ Pro Toner and Probe



OptiFiber® Certifying OTDR



SimpliFiber™ Optical Loss Test Kits



MicroScanner® Pro



JackRapid™ Punchdown Tool

## NETWORK SUPERVISION

### Fluke Networks

P.O. Box 777, Everett, WA USA 98206-0777

Fluke Networks operates in more than 50 countries worldwide. To find your local office contact details, go to [www.flukenetworks.com/contact](http://www.flukenetworks.com/contact).

©2006 Fluke Corporation. All rights reserved.  
Printed in U.S.A. 11/2006 2688220 F-ENG-N Rev A

## **X-ON Electronics**

Largest Supplier of Electrical and Electronic Components

*Click to view similar products for [fluke](#) manufacturer:*

Other Similar products are found below :

[FLUKE-1630-2FC](#) [665080](#) [677393](#) [708396](#) [FLK-VT04-CHARGER](#) [FLUKE 1663](#) [FLUKE-355](#) [FLUKE-424D](#) [FLUKE 80PK-11](#) [FLUKE 80PK-22](#) [FLUKE 80PK-26](#) [FLUKE A3002FC](#) [FLUKE C280](#) [FLUKE I200](#) [FLUKE I3000FLEX-24](#) [FLUKE I400](#) [FLUKE TLK287](#) [FLUKE TP1](#) [FOC-ST/FC](#) [FUSE-15A/600BLSTR](#) [DSP-SR](#) [1553041](#) [1576734](#) [1610198](#) [1633984](#) [C28Y](#) [2096971](#) [2148281](#) [2166266](#) [RS41](#) [2477950](#) [2550519](#) [2558118](#) [2577126](#) [2584901](#) [2811795](#) [2840276](#) [STL120-III](#) [1LAC-A](#) [FLUKE 116/323](#) [FLUKE 52](#) [FLUKE 54](#) [FLUKE-789](#) [FLUKE-805](#) [FLUKE 80K-15](#) [FLUKE 8808/TL](#) [FLUKE-971](#) [FLUKE C101](#) [FLUKE I410](#) [FLUKE T3000FC](#)