

Automotive Circuit Breakers

Cooper Bussmann offers the industry's largest selection of automotive circuit breakers including both OEM-style and fuse-replacement devices.

Circuit breakers are designed to offer a variety of performance characteristics including three types of reset.

(NOTE: Always follow the OEM's recommendations when replacing circuit breakers. Replace only with the same type breaker in aftermarket applications.)

Type I - Automatic Reset

Circuit breaker automatically resets after opening. If the fault still exists, the breaker will continue to cycle between ON and OFF positions until the overload is corrected. These devices are sometimes called "cycling breakers." Type I/Automatic Reset circuit breakers do not address, or correct, overcurrent or fault conditions. They only react by cycling OFF and ON. Any overcurrent or fault condition that causes any Type I circuit breaker to operate should be corrected as soon as possible. Continual vehicle operation under an overcurrent or fault condition (causing the Type I circuit breaker to cycle) is NOT recommended.

Type II - Modified Reset

The circuit breaker will remain tripped (in the OFF position) as long as there's power to the circuit, due to an internal resistor. Type II breakers can be reset by turning off the circuit, or by turning off the ignition switch. These devices are sometimes called "non-cycling breakers." Several Cooper Bussmann Type II breakers feature silver-colored bodies.

Type III - Manual Reset

The circuit breaker will remain tripped (in the OFF position) until an indicator button or lever is manually reset. Type III breakers are also available with a switchable feature, which allows you to use an external button to disable the circuit. Cooper Bussmann circuit breakers feature our patented fail-safe technology - offering an innovative element design which combines the resettable performance of circuit breakers with the short-circuit protection of a fuse.

- Resettable, to work like a normal "cycling" breaker, in low overload conditions.
- Under severe overload or short-circuit conditions, the breaker's element will open to prevent damage to the circuit.

Blade-Type Breakers

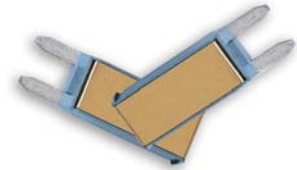
Cooper Bussmann blade-type circuit breakers are available in several reset modes that correspond to SAE categories: SAE Type I (automatic reset), SAE Type II (modified reset) and SAE Type III (manual reset). All Cooper Bussmann blade-type circuit breakers utilize carefully designed and manufactured snap-acting thermal elements with precious metal electrical contacts.

ATM Footprint Breakers

CB211 and CB212 Cooper Bussmann ATM footprint breakers match the blade footprint of ATM fuses. Ultra-thin, to fit in tight spaces - they're the smallest automotive circuit breakers on the market. Cooper Bussmann ATM footprint breakers comply with SAE standard J553.

CB211 Type I ATM Footprint Circuit Breaker

Part No. (Amps)	Blister Pack
CB211-7½	
CB211-10	X
CB211-15	X
CB211-20	X
CB211-25	X
CB211-30	X



CB212 Type II ATM Footprint Circuit Breaker

Part No. (Amps)
CB212-10
CB212-15
CB212-20
CB212-25
CB212-30



MMB Type I Wide ATM Footprint Circuit Breaker For GM Vehicles

Part No. (Amps)	OEM No.
MMB-15	12135171
MMB-20	12135072



Mini Devices

Transorb, resistor and diode vehicle-style electrical protection devices easily install in common ATM fuse holders. These circuit protection devices provide voltage and current limiting functionality to vehicle circuitry; and are designed for the on- and off-highway requirements of heavy trucks, RV, construction, agriculture, ATV and material handling equipment.

- **Transorb** - Protects against voltage spikes. Clamp rating: 27Vdc. Power rating: 1500W
- **Resistor** - Drops circuit voltage. Power rating: 5W. Resistance: 68Ω.
- **Diode** - Prevents reverse current flow. Amp rating: 6A.



Part No.	Description
CB22901-1.5	Transorb voltage spike protector
CB22902-68	Resistor voltage drop device
CB22903-6	Diode reverse current protector
CB22903-6V	Diode reverse current protector with wing key

Automotive Circuit Breakers

ATC Breakers

CB221 and CB222 breakers are designed to fit ATC style fuse panels. Cooper Bussmann ATC breakers are the thinnest available in the aftermarket. These devices comply with SAE standard J553.

CB227 complies with SAE J553 and SAE J1171 for ignition protection.

Cooper Bussmann also offers three ATC-style breakers as replacement parts for specific OEM applications - ACB-20, CCB-25, and FCB-20.

ACB-20 Type I ATC Footprint Circuit Breaker for GM Vehicles

Part No. (Amps)	Blister Pack	OEM No.
ACB-20	X	12040816



CB221 Type I ATC Footprint Circuit Breakers

Part No. (Amps)
CB221-7½
CB221-10
CB221-15
CB221-20
CB221-25
CB221-30



CB222 Type II ATC Footprint Circuit Breakers

Part No. (Amps)
CB222-10
CB222-15
CB222-20
CB222-25
CB222-30



CB223 Type III ATC Footprint Circuit Breakers

Part No. (Amps)
CB223-7½
CB223-10
CB223-15
CB223-20
CB223-25
CB223-30



CB227 Type III ATC Footprint Low-Profile Circuit Breakers

Color Code	Part No. (Amps)
Tan	CB227-5
Moss Green	CB227-6
Brown	CB227-7½
Red	CB227-10
Blue	CB227-15
Yellow	CB227-20
White	CB227-25
Green	CB227-30



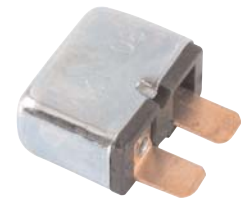
CCB-25 Type I ATC Footprint Circuit Breaker For Chrysler Vehicles

Part No. (Amps)	OEM No.
BP/CCB-25	4527053



CBB-30 Type II ATC Footprint Circuit Breaker

Part No. (Amps)	Blister Pack
CBB-30	X



FCB-20 Type II ATC Footprint Circuit Breaker for Ford Vehicles

Part No. (Amps)	OEM No.
BP/FCB-20	D9AB-14526-BA



UCB Type I ATC Footprint Circuit Breakers

UCB breakers feature "snap-off" universal blades that can easily be sized to fit applications where fuse block spacing is tight, or the fuse terminal is recessed.

Color Code	Part No. (Amps)	Blister Pack	Tri-Lingual Blister
Plain	UCB-6	X	
Brown	UCB-8	X	
Red	UCB-10	X	
Blue	UCB-15	X	X
Yellow	UCB-20	X	
Plain	UCB-25	X	
Green	UCB-30	X	X



Automotive Circuit Breakers

Maxi Breakers

Identical in size to Maxi-style fuses. The only breakers on the market to match the Maxi's footprint and body dimensions.

CB1911 Type I MAX Footprint Circuit Breakers

Part No. (Amps)
CB1911-10
CB1911-15
CB1911-20
CB1911-25
CB1911-30
CB1911-35
CB1911-40
CB1911-50



CB1921 Type II MAX Footprint Circuit Breakers

Part No. (Amps)
CB1921-10
CB1921-15
CB1921-20
CB1921-25
CB1921-30



Glass Tube Breakers

CBF Type II Circuit Breakers For Use In Glass Tube Fuse Holders and Blocks

CBF circuit breakers can be used to replace glass fuses in 1/4" x 1 1/4" small dimension fuse blocks.

Part No. (Amps)	Blister Pack
CBF-6	
CBF-10	X
CBF-15	X
CBF-20	X
CBF-25	X
CBF-30	X
CBF-35	
CBF-40	X



Heavy-Duty Breakers

Used in many heavy-duty and truck applications. Use ring terminals to connect breaker into circuit. CBS are standard-duty and CBC are heavy-duty type breakers.

Cooper Bussmann stud-type circuit breakers feature our patented fail-safe technology, and are available in styles: without bracket; with mounting bracket; waterproof, with mounting bracket and with combination blade and stud terminals. Complies with SAE standard J553.

CB123-B Type III 10-32 Stud-Mount Circuit Breakers with Crosswise Bracket and Cover

Part No. (Amps)
CB123-10B
CB123-15B
CB123-20B
CB123-30B
CB123-40B
CB123-50B



CB123-HB Type III 10-32 Stud-Mount Circuit Breakers with Lengthwise Bracket and Cover

Part No. (Amps)
CB123-10HB
CB123-15HB
CB123-20HB
CB123-30HB
CB123-40HB
CB123-50HB



CBC Type I 10-32 Stud-Mount Circuit Breakers

Part No. (Amps)
CBC-8
CBC-10
CBC-15
CBC-20
CBC-25
CBC-30
CBC-35
CBC-40
CBC-50



CBC-B Type I 10-32 Stud-Mount Circuit Breakers with Crosswise Bracket

Part No. (Amps)	Blister Pack	Tri-Lingual Blister
CBC-8B		
CBC-10B		
CBC-15B		
CBC-20B	X	
CBC-25B	X	
CBC-30B	X	X
CBC-35B	X	
CBC-40B	X	
CBC-50B	X	



Automotive Circuit Breakers

CBC-BWP Type I 10-32 Stud-Mount Weatherproof Circuit Breakers

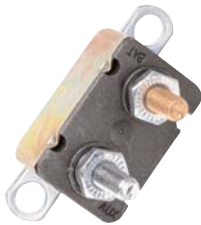
Part No. (Amps)

CBC-20BWP
CBC-30BWP



CBC-HB Type I 10-32 Stud-Mount Circuit Breakers with Lengthwise Bracket

Part No. (Amps)	Blister Pack
CBC-10HB	
CBC-15HB	
CBC-20HB	X
CBC-25HB	
CBC-30HB	X
CBC-40HB	X
CBC-50HB	X



CBP-BA Type I 10-32 Stud-Mount Circuit Breakers with Crosswise Bracket

Part No. (Amps)

CBP-20BA
CBP-25BA
CBP-30BA
CBP-40BA
CBP-50BA



Panel-Mount Breakers

Used in trucks, RVs, boats, buses, etc. offered with 1/4" quick-connect or 90° bent screw terminals.

CB174 Type III Circuit Breakers with 1/4" Quick-Connect Terminals

Part No. (Amps)

CB174-8
CB174-10
CB174-15
CB174-20
CB174-25
CB174-30



CB174B Type III Circuit Breakers with 90° 5-32 Screw Terminals

Part No. (Amps)

CB174B-10
CB174B-15
CB174B-20
CB174B-25
CB174B-30
CB174B-40



Quick-Connect Breakers

Used in trucks, RVs, boats, buses, etc. offered with 1/4" quick-connect or 90° bent screw terminals.

CBT-M Type II Circuit Breakers For Mack Trucks with 1/4" Blades on 1" Centers

Part No. (Amps)

CBT-10M
CBT-15M
CBT-20M
CBT-25M
CBT-30M



CBT-N Type II Circuit Breakers For Navistar Trucks with 1/4" Blades on 1.08" Centers

Part No. (Amps)

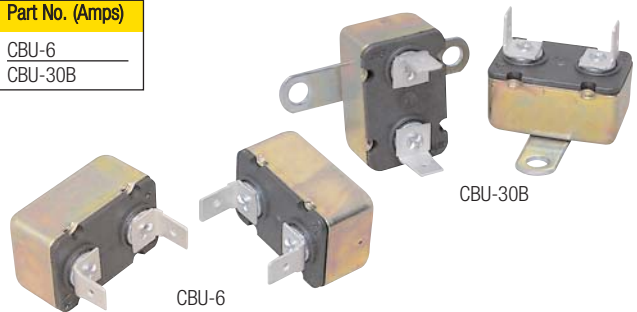
CBT-10N
CBT-15N
CBT-20N
CBT-25N
CBT-30N



CBU Type I Circuit Breakers with 1/4" Quick-Connect Terminals on 0.99" Centers (30B with crosswise bracket)

Part No. (Amps)

CBU-6
CBU-30B



Automotive Circuit Breakers

High Amp Circuit Breakers

These high amp circuit breakers are typically used in auxiliary and accessory circuits for trucks, buses, RVs and marine applications. All high amp circuit breakers comply with the SAE J1117 standard for ignition protection and have applications in battery charger systems and DC audio systems. Offered in flush-mount or panel-mount (see chart for amps available).

CB181F Type I High Amp Waterproof Circuit Breakers with SEMS Nut Installed

Part No. (Amps)	
CB181F-60	CB181F-110
CB181F-70	CB181F-120
CB181F-80	CB181F-135
CB181F-90	CB181F-150
CB181F-100	



CB184F Type III High Amp Waterproof Manual Reset Circuit Breakers with SEMS Nut Installed

Part No. (Amps)	
CB184F-25	CB184F-80
CB184F-30	CB184F-90
CB184F-35	CB184F-100
CB184F-40	CB184F-110
CB184F-50	CB184F-120
CB184F-60	CB184F-135
CB184F-70	CB184F-150



CB185 Type III High Amp Switchable, Waterproof, Flush-Mount Manual Reset Circuit Breakers with SEMS Nut Installed

Part No. (Amps)	Blister Pack
CB185-25	
CB185-30	
CB185-35	
CB185-40	
CB185-50	X
CB185-60	
CB185-70	X
CB185-80	X
CB185-90	
CB185-100	X
CB185-110	
CB185-120	X
CB185-135	X
CB185-150	X



CB185P Type III High Amp Switchable, Panel Mount Manual Reset Circuit Breakers with SEMS Nut Installed

Part No. (Amps)	
CB185P-25	CB185P-80
CB185P-30	CB185P-90
CB185P-35	CB185P-100
CB185P-40	CB185P-110
CB185P-50	CB185P-120
CB185P-60	CB185P-135
CB185P-70	CB185P-150



Marine-Rated Circuit Breakers

Specifically designed to meet the needs of marine applications, the CB187F and CB187P offer 5kA interrupting ratings and ignition protection per ABYC E-11. Usable as an ON/OFF switch (capable of withstanding 3000 on/off cycles @48Vdc), they have corrosion resistant plating on 1/16-18 copper terminals.

CB187F Type III Marine-Rated Surface-Mount Manual Reset Circuit Breaker with Switch Function

Part No. (Amps)	
CB187F-25	CB187F-80
CB187F-30	CB187F-90
CB187F-35	CB187F-100
CB187F-40	CB187F-110
CB187F-50	CB187F-120
CB187F-60	CB187F-135
CB187F-70	CB187F-150



CB187P Type III Marine-Rated Panel-Mount Manual Reset Circuit Breaker with Switch Function

Part No. (Amps)	
CB187P-25	CB187P-80
CB187P-30	CB187P-90
CB187P-35	CB187P-100
CB187P-40	CB187P-110
CB187P-50	CB187P-120
CB187P-60	CB187P-135
CB187P-70	CB187P-150



CB251 Type I Ignition Protected Weatherproof Panel-Mount Manual Reset Circuit Breaker, 32Vdc

Part No. (Amps)	
CB251-10	CB251-30
CB251-15	CB251-35
CB251-20	CB251-40
CB251-25	CB251-50



CB255 Type III Ignition Protected Weatherproof Panel-Mount Manual Reset Circuit Breaker with "Push-to-Trip" Option, 32Vdc

Part No. (Amps)	
CB255-10	CB255-30
CB255-15	CB255-35
CB255-20	CB255-40
CB255-25	CB255-50



X-ON Electronics

Largest Supplier of Electrical and Electronic Components

Click to view similar products for [Circuit Breakers](#) category:

Click to view products by [Eaton](#) manufacturer:

Other Similar products are found below :

[M39019/04-249S](#) [M39019/04-313S](#) [M55629/1-001](#) [M55629/1-016](#) [M55629/1-018](#) [M55629/1-021](#) [M55629/1-033](#) [M55629/1-036](#) [M55629/1-046](#) [M55629/1-048](#) [M55629/1-058](#) [M55629/1-060](#) [M55629/1-067](#) [M55629/1-070](#) [M55629/1-079](#) [M55629/1-084](#) [M55629/1-085](#) [M55629/1-101](#) [M55629/1-108](#) [M55629/1-109](#) [M55629/11-102](#) [M55629/1-120](#) [M55629/12-045](#) [M55629/12-046](#) [M55629/1-243](#) [M55629/1-330](#) [M55629/1-331](#) [M55629/1-351](#) [M55629/1-366](#) [M55629/1-387](#) [M55629/1-388](#) [M55629/1-401](#) [M55629/1-430](#) [M55629/1-450](#) [M55629/1-453](#) [M55629/2-022](#) [M55629/2-037](#) [M55629/2-082](#) [M55629/2-099](#) [M55629/2-101](#) [M55629/2-102](#) [M55629/2-115](#) [M55629/2-116](#) [M55629/2-183](#) [M55629/21-HM-HM](#) [M55629/21-NS-NS](#) [M55629/21-SK-UK](#) [M55629/22-NR-NR-NR](#) [M55629/22-RS-RS-RS](#) [M55629/22-TM-TM-TM](#)