

PT/451

Subminiature cylindrical connectors



MAIN CHARACTERISTICS

Main features of each series

PT/451 Series solder version (Military, aeronautics and industrial applications)
(in accordance with NFC UTE 93422 (HE301) / NF L 54125 (451) / Mil-C-26482)

- 35 different insert arrangements
- Size 20 and 16 hooded (4 times technology) non-removable gold plated contacts
- Retention of the contacts in the insert: 67N for size 20 contacts and 110N for size 16 contacts
- Air leakage: <math> < 16\text{cm}^3 </math> per hour under 2 Bar of differential pressure
- Inserts in Neoprene elastomer
- Rear elastomer grommet independent of the insert to allow soldering process
- Standard shell plating: olive drab cadmium. Cadmium free version also available (see how to order p. 20-21)
- Temperature range: $-55\text{ }^\circ\text{C}/+125\text{ }^\circ\text{C}$.

PT/451 Series crimp version (Military, aeronautics and industrial applications)
(in accordance with NFC UTE 93422 (HE301) / NF L 54125 (451) / VG95328 / Mil-C-26482)

- 25 different insert arrangements
- Size 20 and 16 hooded (4 times technology) crimp removable gold plated contacts, front-release (delivered non-mounted in the insert to allow crimping process)
- Retention of the contacts in the insert ensured by metallic clips or by an hard dielectric retention disc
- Rear elastomer grommet and insert in one part
- Standard shell plating: olive drab cadmium. Cadmium free version also available (see how to order p. 20-21)
- Temperature range: $-55\text{ }^\circ\text{C}/+125\text{ }^\circ\text{C}$.

PT/451 Series PCB and wire wrapp versions (Military, aeronautics and industrial applications) (in accordance with NFC UTE 93422 (HE301) / NF L 54125 (451) / VG95328 / Mil-C-26482)

- 23 different insert arrangements (size 20 pin contacts only)
- Wire wrapp contacts fitted in the insert and removable (front release)
- PCB contacts fitted in the insert and non-removable. Custom designed flexible circuit possibility. Please consult us.
- 3 types of PCB contacts: Y, GS and YS.
- Available in box mounting receptacle and jam nut receptacle
- Standard shell plating: olive drab cadmium. Cadmium free version also available (see how to order p. 20-21)
- Temperature range: $-55\text{ }^\circ\text{C}/+125\text{ }^\circ\text{C}$.

SPT Series crimp version (Industrial application only)
(intermatable with NFC UTE 93422 (HE301) / NF L 54125 (451) / VG95328 / Mil-C-26482)

- 14 different insert arrangements
- Size 20 and 16 specific crimp removable gold plated contacts, front release (delivered not mounted in the insert to allow crimping process)
- Retention of the contacts in the insert ensured by compression of the elastomer insert $\geq 30\text{ N}$.
- Rear elastomer grommet independent of the insert
- Temperature range: $-55\text{ }^\circ\text{C}/+125\text{ }^\circ\text{C}$.

Hermetic receptacles

- 26 different insert arrangements
- Size 20 and 16 solder pin contacts in nickel alloy
- Hermeticity: leak $\leq 10^{-6}\text{ cm}^3 \cdot \text{s}^{-1}$ under 1 bar differential pressure
- Physical shock: 100 G's
- Glass insert
- Steel shells with tin plating finish.

DESCRIPTION

TO READ AT FIRST TO BETTER USE THIS DOCUMENT

You will find in this document the PT/451 connectors in accordance with the American Mil-C-26482 Standard in crimp, solder, wire wrapp, PCB versions, with different sealing levels which are wellknown in aeronautics, military and industrial applications.

A second industrial crimp version called SPT is also presented and is intermatable with the PT/451 series.

PT/451 Series provide you with a multitud of possibilities through their different backshell possibilities, contact terminations, insert arrangements...

The same product can be ordered with different designations. The standard P/N corresponds to both connector body and rear accessory. Please refer to PT and 451 ordering information pages 20, 21 for the normal ordering.

- For specific needs, you may order the connector body only without rear accessory. In this case, refer to page 22 for specific ordering information.

- If you require the military standard P/N, please refer to the chart of cross references mentioned pages 23, 24.

- As far as SPT ordering information is concerned, you will find it page 22.

For all series, the ordering information indicates you where to find the dimensional characteristics corresponding to the wished shell type/rear accessory combination.

May you require a configuration which is not mentioned or a technical data, do not hesitate to contact us, we have pleasure in providing you with the right solution.

*The multi-purpose
bayonet coupling
connection*



Amphenol

PT/451

TABLE OF CONTENTS



MAIN CHARACTERISTICS

- Main features of each series 1

TECHNICAL CHARACTERISTICS

- Electrical characteristics 3
- Contacts dimensions and cable sizes 3
- Coding system / Alternate insert positions 3
- Insert arrangements 4
- Overall dimensions
 - Square flange receptacles 5/6
 - In-line receptacles 7/8/9
 - Straight plugs 9/10/11
 - Jam nut receptacles 12/13
 - Angle plugs 13/14
 - Receptacle with locking ring 14
 - Thru bulkhead receptacle 14
 - PCB and wire wrap versions receptacles 15
- Panel drilling 15
- Hermetic receptacles 16
- How to choose your screened backshell ? 17

ACCESSORIES

- Protective caps 18
- Nut ring for square flange receptacles 18
- Dummy receptacles, panel gaskets, plastic dust caps 19
- Contacts and contacts accessories 19
- Heatshrink molded pieces or heatshrink sleeves for rear accessories 19
- 75° angle potting accessory 19

TOOLING

- Crimping tools, insertion and removal tools 19
- Tools for rear accessories or plugs 19

CONNECTORS ORDERING INFORMATION

- PT Series 20
- 451 Series 21
- SPT Series 22
- PT connector bodies and PTSA backshell 22/23
- Cross references (PT, 451, HE301, VG or MS designation) 23/24

Electrical characteristics for PT/451/SPT series

	Size 20 contacts (ø 1mm)	Size 16 contacts (ø 1.57mm)	
	Service I	Service I	Service II
Test voltage at sea level	1500 Vrms	1500 Vrms	2300 Vrms
Test voltage at 21000 m	375 Vrms	375 Vrms	600 Vrms
Current rating per contact*	7.5 A	13 A	
Insulation resistance at ambient	≥ 5000 MOhms	≥ 5000 MOhms	
Contact resistance at ambient	≤ 2 mOhms	≤ 1.5 mOhm	

*: Current rating must not be applied in the same time to 50% of the contacts of the connector.

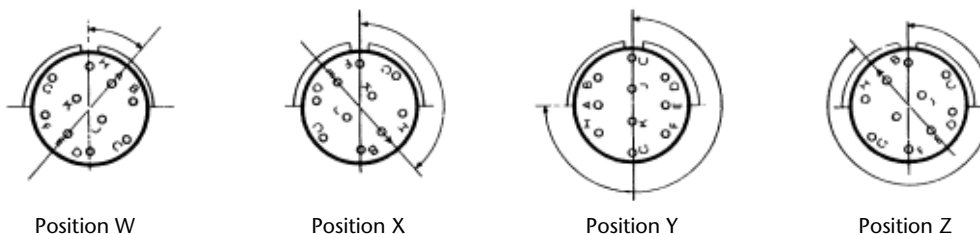
Contacts dimensions and cable sizes for PT/451/SPT series

Type	Contacts		Gauge Mil-W-5086	Section (mm ²)	Diameter in mm			
	Size	ø in mm			on conductor		on insulator	
					min.	max.	min.	max.
Solder	20	1	22 to 18	0.38-0.93	-	1.3	1.2	2.4
	16	1.57	20 to 14	0.60-1.91	-	1.6	1.6	2.8
Crimp	20	1	24* to 18	0.22*-0.93	0.6	1.3	1.2	2.4
	16	1.57	22* to 14	0.38*-1.91	-	1.6	1.6	2.8

*: Possible when used with reducing sleeves (see page 19 for ordering information).

Coding system/Alternate insert positions

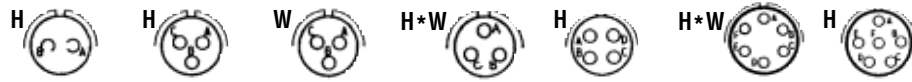
To avoid cross-plugging problems in applications requiring the use of more than one PT/451 connector of the same size and arrangement, alternate insert rotations are available as indicated in the accompanying chart. As shown in the diagram below, the front face of the pin insert is rotated within the shell in a clockwise direction from the normal shell key.



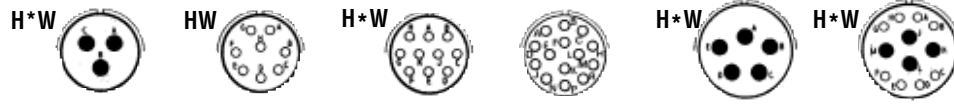
Views looking into front face of pin insert or rear of socket insert.

Shell size	Insert Arrangement	Insert rotation (in degrees)			
		W	X	Y	Z
8	8-2	58	122	-	-
8	8-3	60	210	-	-
8	8-3A	60	-	-	-
8	8-33	90	-	-	-
8	8-4	45	-	-	-
10	10-6	90	-	-	-
10	10-98	90	180	240	270
12	12-3	-	-	180	-
12	12-8	90	112	203	292
12	12-10	60	155	270	295
12	12-14	-	-	-	-
14	14-5	40	92	184	273
14	14-12	43	90	-	-
14	14-15	17	110	155	234
14	14-18	15	90	180	270
14	14-19	30	165	315	-
16	16-8	54	152	180	331
16	16-23	158	270	-	-
16	16-26	60	-	275	338
18	18-11	62	119	241	340
18	18-30	180	193	285	350
18	18-32	85	138	222	265
20	20-16	238	318	333	347
20	20-24	70	145	215	290
20	20-25	72	144	216	288
20	20-27	72	144	216	288
20	20-39	63	144	252	333
20	20-41	45	126	225	-
22	22-21	16	135	175	349
22	22-32	72	145	215	288
22	22-34	62	142	218	298
22	22-36	72	144	216	288
22	22-41	39	135	264	-
22	22-55	30	142	226	314
24	24-61	90	180	270	324

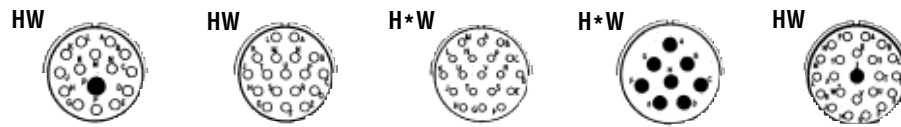
Insert arrangements - Mating face of male insert view.



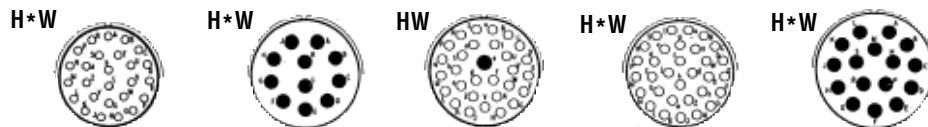
Insert arrangements	8-2	8-3 ■	8-3A ■ (8-98)	8-33	8-4	10-6	10-98
Service rating	I	I	I	I	I	I	I
Number of contacts	2	3	3	3	4	6	6
Contact size	20	20	20	20	20	20	20



Insert arrangements	12-3	12-8	12-10	12-14	14-5	14-12
Service rating	II	I	I	I	II	I
Number of contacts	3	8	10	14	5	8 4
Contact size	16	20	20	20	16	20 16



Insert arrangements	14-15	14-18	14-19	16-8	16-23
Service rating	I	I	I	II	I
Number of contacts	14 1	18	19	8	22 1
Contact size	20 16	20	20	16	20 16



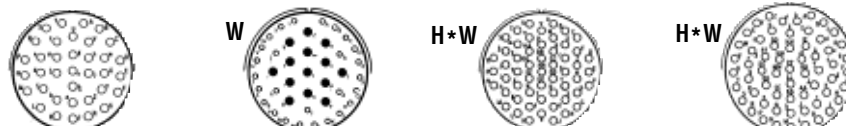
Insert arrangements	16-26	18-11	18-30	18-32	20-16
Service rating	I	II	I	I	II
Number of contacts	26	11	29 1	32	16
Contact size	20	16	20 16	20	16



Insert arrangements	20-24	20-25	20-27	20-39
Service rating	I	I	I	I
Number of contacts	24	25	27	37 2
Contact size	20	20	20	20 16



Insert arrangements	20-41	22-21	22-32	22-34
Service rating	I	II	I	I
Number of contacts	41	21	32	34
Contact size	20	16	20	20



Insert arrangements	22-36	22-41	22-55	24-61
Service rating	I	I	I	I
Number of contacts	36	27 14	55	61
Contact size	20	20 16	20	20

■ : Caution: 8-3A and 8-3 insert arrangements are not intermatable. * : Available in SPT, industrial crimp version.
 H : Available in hermetic version. W : Available in crimp version.
All mentioned insert arrangements are available in solder version.

Contact Legend

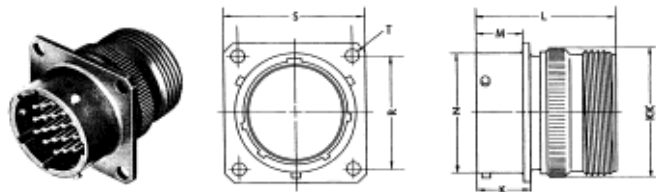
Symbol	Contact Size
○	20
●	16

Contact us for other insert arrangements availability.

Overall dimensions

PT00A - 45100A 45100RA

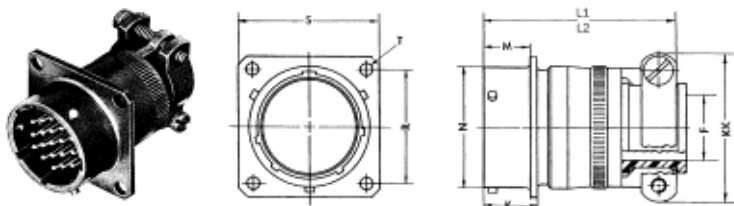
Square flange receptacle with non environmental intermediate backshell.



Shell size	K	L	M	N	R	S	T	KK
8	12.5	33.7	10.95	12.01	15.09	20.6	3.05	14.7
10	12.5	33.7	10.95	14.98	18.26	23.8	3.05	17.9
12	12.5	33.7	10.95	19.05	20.62	26.2	3.05	21
14	12.5	33.7	10.95	22.23	23.01	28.6	3.05	24.6
16	12.5	33.7	10.95	25.4	24.61	31	3.05	27.4
18	12.5	33.7	10.95	28.58	26.97	33.3	3.05	30.6
20	16.5	40.7	14.12	31.75	29.36	36.5	3.05	33.7
22	16.5	40.7	14.12	34.93	31.75	39.7	3.05	36.9
24	17.3	42.3	14.96	38.10	34.93	42.9	3.73	40.1

PT00A (SR) - 45100AC } L1 SPT00A (SR) SPT00E (SR) PT00E (SR) - 45100EC } L2

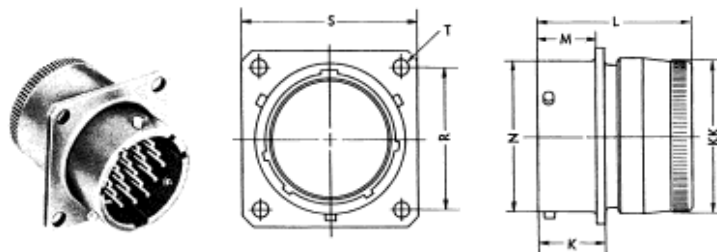
Square flange receptacle with non-environmental or environmental cable clamp backshell.



Shell size	F	K	L1 max.	L2 max.	M	N	R	S	T	KKmax.
8	3.2	12.5	44.2	51.6	10.95	12.01	15.09	20.6	3.05	20.2
10	4.8	12.5	44.2	51.6	10.95	14.99	18.26	23.8	3.05	23
12	7.9	12.5	44.2	51.6	10.95	19.05	20.62	26.2	3.05	25
14	9.5	12.5	44.2	51.6	10.95	22.23	23.01	28.6	3.05	28.2
16	12.7	12.5	46.8	54.8	10.95	25.4	24.61	31	3.05	29.8
18	15.9	12.5	46.8	54.8	10.95	28.58	26.97	33.3	3.05	36.1
20	15.9	16.5	53.8	57.6	14.12	31.75	29.36	36.5	3.05	36.1
22	19.1	16.5	53.8	57.6	14.12	34.93	31.75	39.7	3.05	40.9
24	20.3	17.3	55.4	57.6	14.96	38.10	34.93	42.9	3.73	43.2

PT00E - 45100E PT00SE - 45100R SPT00E

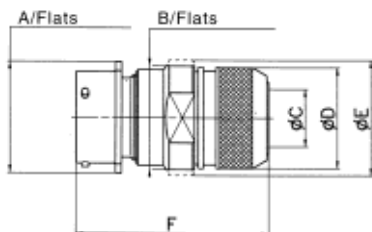
Square flange receptacle with environmental backnut.



Shell size	K	L max.	M	N	R	S	T	KK
8	12.5	37.3	10.95	12.01	15.09	20.6	3.05	14.2
10	12.5	37.3	10.95	14.99	18.26	23.8	3.05	17.4
12	12.5	37.3	10.95	19.05	20.62	26.2	3.05	20.7
14	12.5	37.3	10.95	22.23	23.01	28.6	3.05	23.6
16	12.5	37.3	10.95	25.4	24.61	31	3.05	26.8
18	12.5	37.3	10.95	28.58	26.97	33.3	3.05	29.8
20	16.5	39.7	14.12	31.75	29.36	36.5	3.05	33
22	16.5	39.7	14.12	34.93	31.75	39.7	3.05	36.3
24	17.3	41.3	14.96	38.10	34.93	42.9	3.73	39.5

PT00SE (SQ)

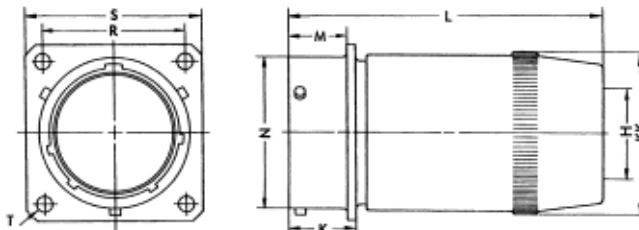
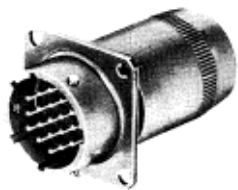
Square flange receptacle with SQ braid clamping backshell.



Shell size	A	B	ØC	ØD	ØE	F
8	20.6	16.8	6.7	16	20	51.77
10	23.8	20.8	9.2	18	24	51.77
12	26.2	22.8	12.2	22	26	52.77
14	28.6	25.8	15.2	25	29	52.77
16	31	28.8	18.3	28	32	52.77
18	33.3	31.8	20	32	35	52.77
20	36.5	35.8	23	34	38	57.3
22	39.7	38.8	26	38	42	57.3
24	42.9	41.8	28.8	41	45	59

PTOOW - 45100J
SPTOOW

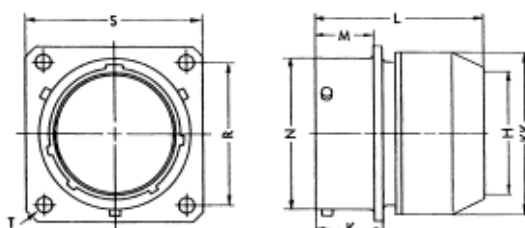
Square flange receptacle with environmental sealing gland backshell.



Shell size	H		K	L max.	M	N	R	S	T	KK
	min.	max.								
8	4.3	5.8	12.5	40.8	10.95	12.01	15.09	20.6	3.05	13.5
10	5.2	7.9	12.5	41.8	10.95	14.99	18.26	23.8	3.05	16.7
12	8.6	11.2	12.5	45.4	10.95	19.05	20.62	26.2	3.05	20.2
14	10.6	13.7	12.5	50.3	10.95	22.23	23.01	28.6	3.05	23.4
16	14	15.6	12.5	55.8	10.95	25.40	24.61	31	3.05	27
18	15.2	17.1	12.5	61.6	10.95	28.58	26.97	33.3	3.05	30.2
20	16.1	19	16.5	72.7	14.12	31.75	29.36	36.5	3.05	33.3
22	17	21.5	16.5	76.8	14.12	34.93	31.75	39.7	3.05	36.5
24	18.8	22.7	17.3	82.5	14.96	38.10	34.93	42.9	3.73	39.7

PTOOP - 45100P
PTOOSP - 45100RP

Square flange receptacle with straight backshell for potting.



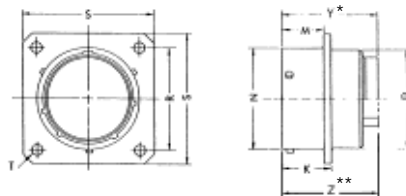
Shell size	H	K	L max.	M	N	R	S	T	KK
8	8.3	12.5	44	10.95	12.01	15.09	20.6	3.05	15.4
10	11.3	12.5	44	10.95	14.99	18.26	23.8	3.05	18.6
12	14.2	12.5	44	10.95	19.05	20.62	26.2	3.05	21.8
14	17.3	12.5	44	10.95	22.23	23.01	28.6	3.05	25
16	20.5	12.5	44	10.95	25.41	24.61	31	3.05	28.2
18	23.1	12.5	44	10.95	28.58	26.97	33.3	3.05	31.3
20	26.3	16.5	48	14.12	31.75	29.36	36.5	3.05	34.5
22	29.4	16.5	48	14.12	34.93	31.75	39.7	3.05	37.7
24	32.6	17.3	49	14.96	38.10	34.93	42.9	3.73	40.9

PT00E(J) - 45100T
PT00SE(J) - 45100RT

Square flange receptacle with backnut for heatshrink molded piece. Please contact us for dimensional characteristics.

PT02A - PT02E - 45102E
PT02SE - 45102R
SPT02A

Square flange receptacle without rear accessory possibility.

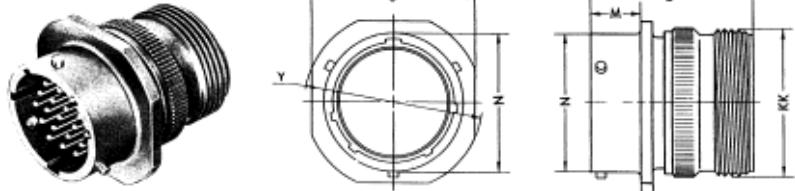


Shell size	Dimensions (mm)									
	K max.	M +0.25 0	N +0.020 -0.13	P max.	R	S ±0.4	T ±0.1	Y*	S. 20 max.	S. 16 max.
8	13	10.95	12.02	11.4	15.09	20.6	3.2	23.9	25.8	28.1
10	13	10.95	14.99	14.6	18.26	23.8	3.2	23.9	25.8	28.1
12	13	10.95	19.05	17.8	20.62	26.2	3.2	23.9	25.8	28.1
14	13	10.95	22.23	20.9	23.01	28.6	3.2	23.9	25.8	28.1
16	13	10.95	25.40	24.1	24.61	31.0	3.2	23.9	25.8	28.1
18	13	10.95	28.58	27.3	26.97	33.3	3.2	23.9	25.8	28.1
20	17	14.12	31.75	30.5	29.36	36.5	3.2	29.2	31.4	33.7
22	17	14.12	34.93	33.6	31.75	39.7	3.2	29.2	31.4	33.7
24	17.8	14.96	38.10	36.8	34.93	42.9	3.73	29.2	31.3	33.6

* : For all versions except SPT02A. ** : For SPT02 only and dependent on contact size (20 or 16).

**PT01A - 45101A
45101RA**

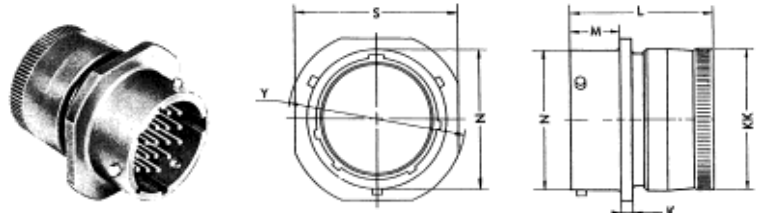
Line mount receptacle with non-environmental intermediate backshell.



Shell size	K	L	M	N	S	KK	Y
8	2.4	35.5	10.16	12.01	20.6	14.7	23.83
10	2.4	35.5	10.16	14.99	23.8	17.9	26.97
12	2.4	35.5	10.16	19.05	26.2	21	29.36
14	2.4	35.5	10.16	22.23	28.6	24.6	31.75
16	2.4	35.5	10.16	25.40	31	27.4	34.14
18	2.4	35.5	10.16	28.58	33.3	30.6	36.53
20	2.9	41.7	13.59	31.75	36.5	33.7	39.67
22	2.9	41.7	13.59	34.93	39.7	36.9	42.88
24	2.9	42.5	14.43	38.10	42.9	39.8	46.02

**PT01E - 45101E
PT01SE - 45101R
SPT01E**

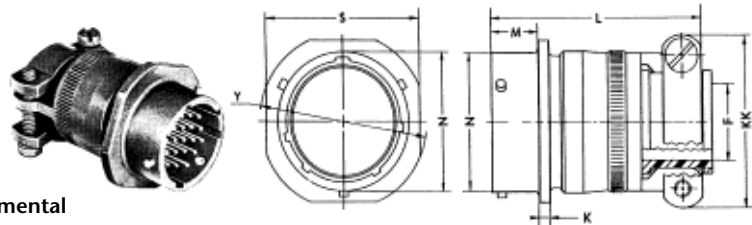
Line mount receptacle with environmental backnut.



Shell size	K	L max.	M	N	S	KK	Y
8	2.4	35	10.16	12.01	20.6	13.7	23.83
10	2.4	35	10.16	14.99	23.8	16.9	26.97
12	2.4	35	10.16	19.05	26.2	20.1	29.36
14	2.4	35	10.16	22.23	28.6	23.1	31.75
16	2.4	35	10.16	25.40	31	26.3	34.14
18	2.4	35	10.16	28.58	33.3	29.3	36.53
20	2.9	38.5	13.59	31.75	36.5	32.5	39.67
22	2.9	38.5	13.59	34.93	39.7	35.8	42.88
24	2.9	40	14.43	38.10	42.9	39	46.02

**PT01A(SR) - 45101AC
PT01E(SR) - 45101EC
PT01SE(SR) - 45101RC
SPT01A(SR)
SPT01E(SR)**

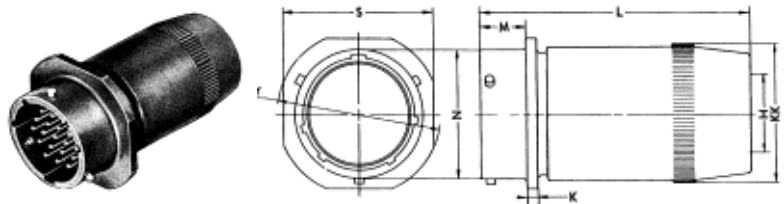
Line mount receptacle with non-environmental or environmental cable clamp backshell.



Shell size	F	K	L max.	M	N	S	KK	Y
8	3.2	2.4	49	10.95	12.01	20.6	19.8	23.83
10	4.8	2.4	49	10.95	14.99	23.8	21.4	26.97
12	7.9	2.4	49	10.95	19.05	26.2	24.6	29.36
14	9.5	2.4	49	10.95	22.23	28.6	27.8	31.75
16	12.7	2.4	52.4	10.95	25.40	31	29.4	34.14
18	15.9	2.4	52.4	10.95	28.58	33.3	35.7	36.53
20	15.9	2.9	54.8	14.12	31.75	36.5	35.7	39.67
22	19.1	2.9	54.8	14.12	34.93	39.7	40.5	42.88
24	20.3	2.9	56.4	14.96	38.10	42.9	42.9	46.02

**PT01W - 45101J
SPT01W**

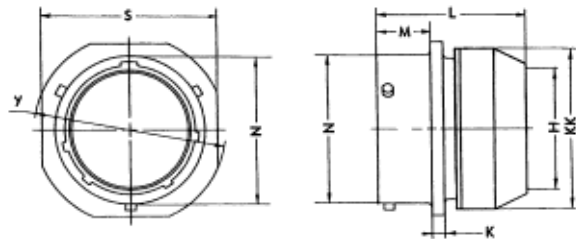
Line mount receptacle with environmental sealing gland backshell.



Shell size	H min.	max.	K	L max.	M	N	S	KK	Y
8	4.3	5.8	2.4	40.8	10.16	12.01	20.6	13.5	23.83
10	5.2	7.9	2.4	41.8	10.16	14.99	23.8	16.7	26.97
12	8.6	11.2	2.4	45.4	10.16	19.05	26.2	20.2	29.36
14	10.6	13.7	2.4	50.3	10.16	22.23	28.6	23.4	31.75
16	14	15.6	2.4	55.8	10.16	25.40	31	27	34.14
18	15.2	17.1	2.4	61.6	10.16	28.58	33.3	30.2	36.53
20	16.1	19	2.9	72.7	13.59	31.75	36.5	33.3	39.67
22	17	21.5	2.9	76.8	13.59	34.93	39.7	36.5	42.88
24	18.8	22.7	2.9	82.5	14.43	38.10	42.9	39.7	46.02

PT01P - 45101P
PT01SP - 45101RP

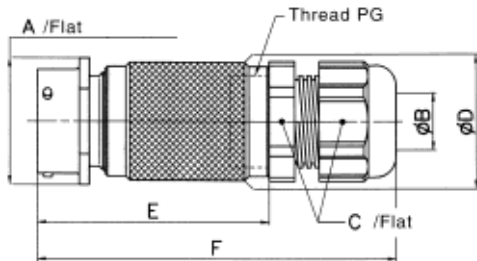
Line mount receptacle with straight backshell for potting.



Shell size	H	K	L max.	M	N	S	KK	Y
8	8.3	2.4	44.5	10.16	12.01	20.6	15.4	23.83
10	11.3	2.4	44.5	10.16	14.99	23.8	18.6	26.97
12	14.2	2.4	44.5	10.16	19.05	26.2	21.8	29.36
14	17.3	2.4	44.5	10.16	22.23	28.6	25	31.75
16	20.5	2.4	44.5	10.16	25.40	31	28.2	34.14
18	23.1	2.4	44.5	10.16	28.58	33.3	31.3	36.53
20	26.3	2.9	46.5	13.59	31.75	36.5	34.5	39.67
22	29.4	2.9	46.5	13.59	34.93	39.7	37.7	42.88
24	32.6	2.9	47.3	14.43	38.10	42.9	40.9	46.02

PT01A (PG) - 45101A (PG)

Line mount receptacle with straight adaptor terminated by a PG type plastic sealing gland.

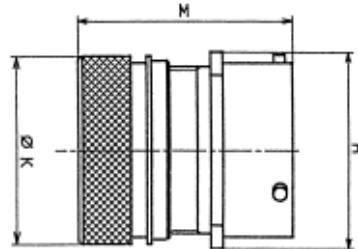


Shell size	A	ØB	C	ØD	E	F	PG
8	20.6	2.5 à 6.5	15	16.6	51.5	75.5	PG7
10	23.8	3.5 à 8	19	19.5	51.5	79.5	PG9
12	26.2	4 à 10	22	22.8	51.5	81.5	PG11
14	28.6	5 à 12	24	25.8	56.5	88.5	PG13.5
16	31	9 à 14	27	28.9	56.5	90.5	PG16
18	33.3	9 à 14	27	32	61.5	95.5	PG16
20	36.5	9 à 14	27	35.2	67	101	PG16
22	39.7	13 à 18	33	38.3	72	110	PG21
24	42.9	13 à 18	33	41.6	73.6	111.6	PG21

PT01E(J) - 45101T
PT01SE(J) - 45101RT

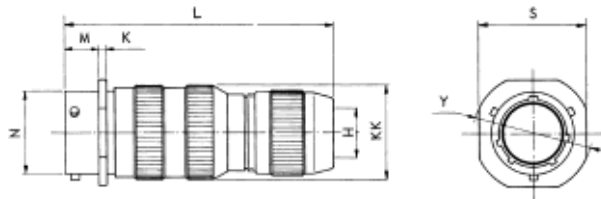
Line mount receptacle with backnut for heatshrink molded piece.

Shell size	R	M max.	Ø K max.
8	20.5	34.5	15.6
10	23.8	34.5	18.4
12	26.2	34.5	23.7
14	28.6	34.5	24.5
16	31	37	29.8
18	33.3	37	32
20	36.5	47.1	36.1
22	39.7	47.1	38.5
24	42.9	47	41.5



PT01EK - 45101EK
PT01SK - 45101SK
PT01KM - 45101KM
SPT01EK

Line mount receptacle with rain proof or immersion proof sealing gland backshell with strong grip.

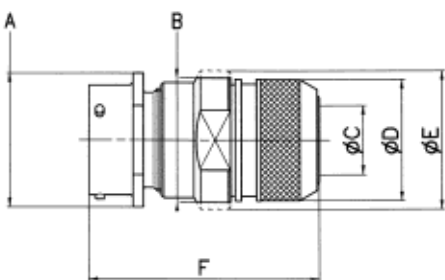


Shell size	K	M	N	S	Y	KK	L	
							EK	KM SK
8	2.4	10.16	12.01	20.6	23.83	13.5	71.5	81.5
10	2.4	10.16	14.99	23.8	26.97	16.7	71.5	81.5
12	2.4	10.16	19.05	26.2	29.36	20.2	71.5	81.5
14	2.4	10.16	22.23	28.6	31.75	23.4	79.5	94.5
16	2.4	10.16	25.40	31	34.14	27	79.5	94.5
18	2.4	10.16	28.58	33.3	36.53	30.2	79.5	94.5
20	2.9	13.59	31.75	36.5	36.97	33.3	91.5	107
22	2.9	13.59	34.93	39.7	42.88	36.5	94	109.5
24	2.9	14.43	38.10	42.9	46.02	39.7	95	110

Joint number: please refer to end of page 11 for dimension H depending on the joint number.

PT01SE (SQ)

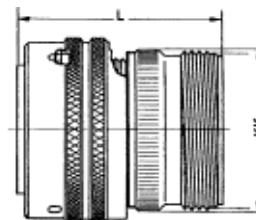
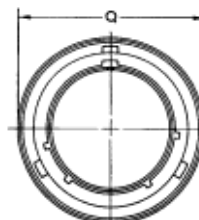
Line mount receptacle with SQ braid clamping backshell.



Shell size	A	B	ØC	ØD	ØE	F
8	20.6	16.8	6.7	16	20	52.57
10	23.8	20.8	9.2	18	24	52.57
12	26.2	22.8	12.2	22	26	53.57
14	28.6	25.8	15.2	25	29	53.57
16	31	28.8	18.3	28	32	53.57
18	33.3	31.8	20	32	35	53.57
20	36.5	35.8	23	34	38	58.1
22	39.7	38.8	26	38	42	58.1
24	42.9	41.8	28.8	41	45	59.8

PT06A - 45106A 45106RA

Straight plug with non-environmental intermediate backshell.

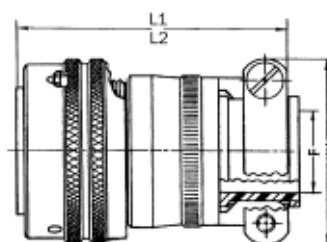
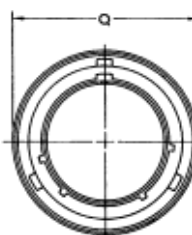


Shell size	L	Q	KK
8	38.5	18.6	14.7
10	38.5	21.4	17.9
12	38.5	25.8	21
14	38.5	29	24.6
16	38.5	32.2	27.4
18	38.5	34.9	30.6
20	40.1	38.5	33.7
22	40.1	41.7	36.9
24	42.2	44.7	39.8

PT06A (SR) - 45106AC SPT06A (SR) SPT06E (SR) } L1

PT06E (SR) - 45106EC PT06SE (SR) - 45106RC } L2

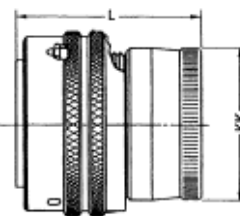
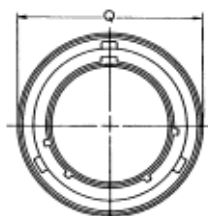
Straight plug with non-environmental or environmental cable clamp backshell.



Shell size	F	L1 max.	L2 max.	Q	KK max.
8	3.2	43.5	51.1	18.6	20.2
10	4.8	43.5	51.1	21.4	21.8
12	7.9	43.5	51.1	25.8	25
14	9.5	43.5	51.1	29	28.2
16	12.7	47	54.2	32.2	29.8
18	15.9	47	54.2	34.9	36.1
20	15.9	51.2	55	38.5	36.1
22	19.1	51.2	55	41.7	40.9
24	20.3	53	56.5	44.7	43.3

PT06E - 45106E PT06SE - 45106R SPT06E

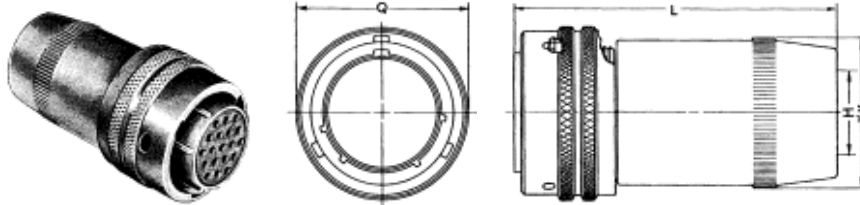
Straight plug with environmental backnut.



Shell size	L max.	Q	KK
8	36.8	18.6	14.2
10	36.8	21.4	17.4
12	36.8	25.8	20.7
14	36.8	29	23.6
16	36.8	32.2	26.8
18	36.8	34.9	29.8
20	37.5	38.5	33
22	37.5	41.7	36.3
24	39.1	44.7	39.5

PT06W - 45106J
SPT06W

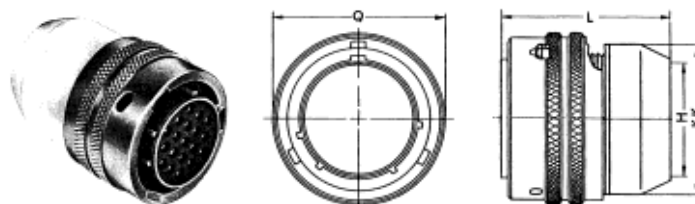
Straight plug with environmental sealing gland backshell.



Shell size	H min.	H max.	L max.	Q	KK
8	4.3	5.8	43.3	18.6	13.5
10	5.2	7.9	43.3	21.4	16.7
12	8.6	11.2	46.9	25.8	20.2
14	10.6	13.7	51.8	29	23.4
16	14	15.6	57.3	32.2	27
18	15.2	17.1	63.1	34.9	30.2
20	16.1	19	72.2	38.5	33.3
22	17	21.5	76.2	41.7	36.5
24	18.8	22.7	81.5	44.7	39.7

PT06P - 45106P
PT06SP - 45106RP

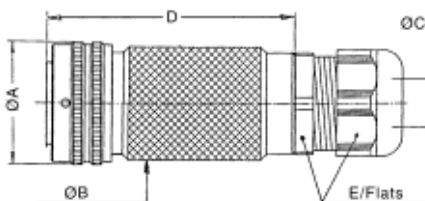
Straight plug with backshell for potting.



Shell size	H	L max.	Q	KK
8	8.3	43.5	18.6	14.9
10	11.3	43.5	21.4	17.9
12	14.2	43.5	25.8	20.9
14	17.3	43.5	29	23.7
16	20.5	43.5	32.3	27.4
18	23.1	43.5	34.9	30.6
20	26.3	44	38.5	33.8
22	29.4	44	41.7	39.9
24	32.6	45	44.7	40.1

PT06A (PG) - 45106A (PG)

Straight plug with adaptor terminated by a PG type plastic sealing gland.

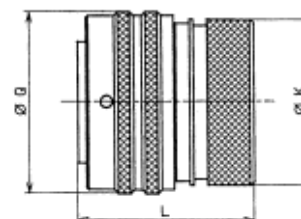


Shell size	Ø A	Ø B	Ø C		D	E/plats	PG size
			min.	max.			
8	18.6	16.6	2.5	6.5	51.2	15	PG 7
10	21.4	19.5	3.5	8	51.2	19	PG 9
12	25.8	22.8	4	10	51.2	22	PG 11
14	29.0	25.8	5	12	56.2	24	PG 13.5
16	32.2	28.9	9	12	56.2	27	PG 16
18	34.9	32.0	9	14	61.2	27	PG 16
20	38.5	35.2	9	14	65.2	27	PG 16
22	41.7	38.3	13	18	70.2	33	PG 21
24	44.7	41.6	13	18	70.2	33	PG 21

PT06E(J) - 45106T
PT06SE(J) - 45106RT

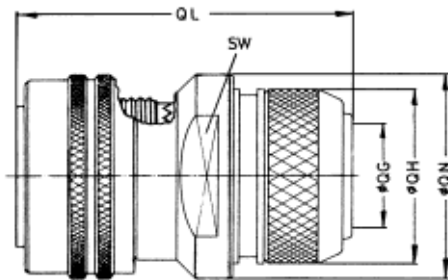
Straight plug with backnut for heatshrink molded piece.

Shell Size	Ø Q	L max.	Ø K max.
8	18.6	33.7	15.6
10	21.4	33.7	18.4
12	25.8	33.7	23.7
14	29	33.7	24.5
16	32.2	36.2	29.8
18	34.9	36.2	32
20	38.5	44.7	36.1
22	41.7	44.7	38.5
24	44.7	44.5	41.5



PTG06SE (SQ)

Straight plug with SQ braid clamping backshell.



Shell size	ø QG min.	ø QH+0.5	QL max.	ø QN max.	SW -0.2
8	6.7	16	51	20	18
10	9.2	18	51	23	21
12	12.2	22	54	27	24
14	15.2	25	54	30	28
16	18.3	28	54	33	31
18	20.0	32	54	36	34
20	23.0	34	56	40	37
22	26.0	38	56	43	41
24	28.8	41	58	46	44

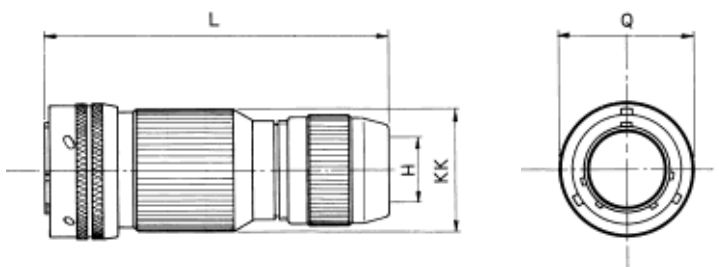
PT06EK - 45106EK

PT06SK - 45106SK

PT06KM - 45106KM

SPT06EK

Straight plug with rain proof or immersion proof sealing gland backshell.



Shell size	Q	KK	L for EK	L for KM & SK
8	18.6	15	71.5	81.5
10	21.4	18	71.5	81.5
12	25.8	22	71.5	81.5
14	29	24.5	79.5	94.5
16	32.2	27.5	79.5	94.5
18	34.9	30.5	79.5	94.5
20	38.5	34	91.5	105
22	41.7	37	94	107.5
24	44.7	40	94.5	108

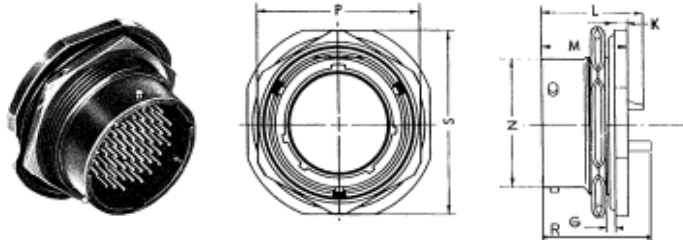
Joint number 1, 2 or 3 for cable exit sealing.

Shell size	Dimension H/Acceptable cable		
	1 Ø (mm)	2 Ø (mm)	3 Ø (mm)
8	4 to 5	5 to 6.5	
10	5 to 6.5	6.5 to 8	
12	8 to 9.5	9.5 to 11	
14	10.5 to 12	12 to 13.5	7 to 9.5
16	12.5 to 14	14 to 15.6	
18	15 to 17	17 to 19	14 to 9.5
20	15 to 17	17 to 19	14 to 9.5
22	17 to 19	19 to 21.5	
24	18.5 to 20.5	20.5 to 23	

(Joint numbers 1, 2 or 3 to mention in the P/N).

PT07A - 45107A
PT07C
SPT07A

Plain shell jam nut receptacle.

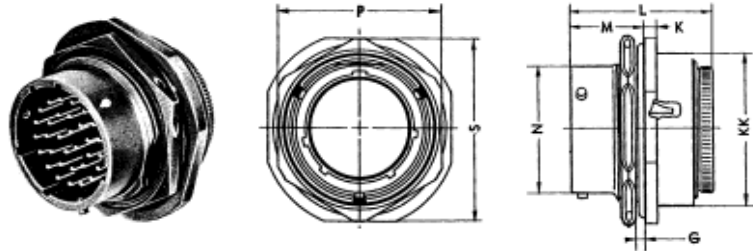


Shell size	R for SPT07A		G		K	L for PT07A 45107A PT07C	M	N	P ± 0.4	S
	Cts* #20 max.	Cts* #16 max.	min.	max.						
8	24.2	26.5	1.6	3.2	3.2	23.7	20.9	12.01	19.1	23.8
10	24.2	26.5	1.6	3.2	3.2	23.7	20.9	14.99	22.2	27
12	24.2	26.5	1.6	3.2	3.2	23.7	20.9	19.05	27	31.8
24	24.2	26.5	1.6	3.2	3.2	23.7	20.9	22.23	30.2	34.9
16	24.2	26.5	1.6	3.2	3.2	23.7	20.9	25.40	33.3	38.1
18	24.2	26.5	1.6	3.2	3.2	23.7	20.9	28.58	36.5	41.3
20	29.6	31.9	1.6	6.4	4	29.2	26.5	31.75	39.7	46
22	29.6	31.9	1.6	6.4	4	29.2	26.5	34.93	42.9	49.2
24	30.4	32.7	1.6	6.4	4	30	27.3	38.10	46	52.4

* Cts 20 = size 20 contacts - Cts 16 = size 16 contacts.

PT07E - 45107E
PT07SE - 45107R
SPT07E

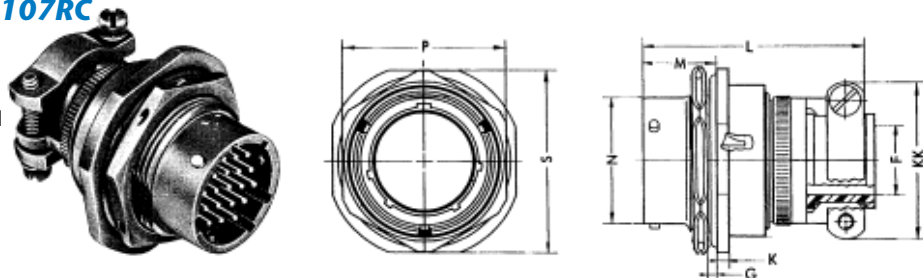
Jam nut receptacle with environmental backnut.



Shell size	G		K	L max.	M	N	P ± 0.4	S	KK
	min.	max.							
8	1.6	3.2	3.2	38.3	17.7	12.01	19.1	23.8	18.5
10	1.6	3.2	3.2	38.3	17.7	14.99	22.2	27	21.7
12	1.6	3.2	3.2	38.3	17.7	19.05	27	31.75	24.9
14	1.6	3.2	3.2	38.3	17.7	22.23	30.2	34.93	28
16	1.6	3.2	3.2	38.3	17.7	25.40	33.3	38.1	31.2
18	1.6	3.2	3.2	38.3	17.7	28.58	36.5	41.3	34.4
20	1.6	6.4	4	41.2	22.5	31.75	39.7	46	38.4
22	1.6	6.4	4	41.2	22.5	34.93	42.9	49.2	41.5
24	1.6	6.4	4	42.8	23.3	38.1	46	52.4	44.7

PT07E (SR) - 45107EC
PT07SE (SR) - 45107RC
SPT07E (SR)

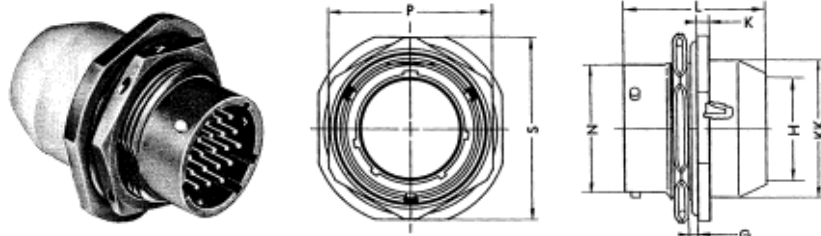
Jam nut receptacle with non-environmental or environmental cable clamp backshell.



Shell size	F	G		K	L	M	N	P ± 0.4	S	KK
		min.	max.							
8	3.2	1.6	3.2	3.2	49.5	17.7	12.01	19.1	23.8	19.8
10	4.8	1.6	3.2	3.2	49.5	17.7	14.99	22.2	27	21.4
12	7.9	1.6	3.2	3.2	49.5	17.7	19.05	27	31.8	24.6
14	9.5	1.6	3.2	3.2	49.5	17.7	22.23	30.2	34.9	27.8
16	12.7	1.6	3.2	3.2	52.6	17.7	25.40	33.3	38.1	29.4
18	15.9	1.6	3.2	3.2	52.6	17.7	28.58	36.5	41.3	35.7
20	15.9	1.6	6.4	4	54.95	22.5	31.75	39.7	46	35.7
22	19.1	1.6	6.4	4	54.95	22.5	34.95	42.9	49.2	40.5
24	20.3	1.6	6.4	4	58.2	23.3	38.1	46	52.5	42.1

PT07P - 45107P
PT07SP - 45107RP

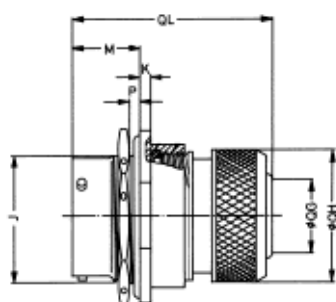
Jam nut receptacle
with straight backshell
for potting.



Shell size	G		H	K	L max.	M	N	P ± 0.4	S	KK
	min.	max.								
8	1.6	3.2	8.3	3.2	39.9	17.7	12.01	19.1	25.8	15.4
10	1.6	3.2	11.3	3.2	39.9	17.7	14.99	22.2	27	18.6
12	1.6	3.2	14.2	3.2	39.9	17.7	19.05	27	31.8	21.7
14	1.6	3.2	17.3	3.2	39.9	17.7	22.23	30.2	34.9	25
16	1.6	3.2	20.5	3.2	39.9	17.7	25.40	33.3	38.1	28.2
18	1.6	3.2	23.1	3.2	39.9	17.7	28.58	36.5	41.3	31.3
20	1.6	6.4	26.3	4	47.1	22.5	31.75	39.7	46	34.5
22	1.6	6.4	29.4	4	47.1	22.5	34.93	42.9	49.2	37.3
24	1.6	6.4	32.6	4	47.9	23.3	38.1	46	52.4	40.9

PT07SE (SQ)

Jam nut receptacle with SQ braid clamping backshell.



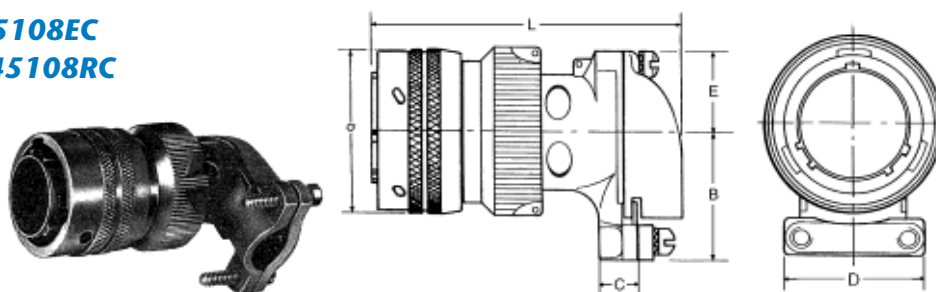
Shell size	ø QG min.	ø QH +0.5	QL max.	J 0 -0.25	K ±0.5	M ±0.13	P (Panel thickness)	
							min.	max.
8	6.6	16	48.4	13.46	3.0	17.68	1.6	3.2
10	9.2	18	48.4	16.64	3.0	17.68	1.6	3.2
12	12.2	22	51.4	20.78	3.0	17.68	1.6	3.2
14	15.2	25	51.4	23.93	3.0	17.68	1.6	3.2
16	18.3	28	51.4	27.08	3.0	17.68	1.6	3.2
18	20.0	32	51.4	30.25	3.0	17.68	1.6	3.2
20	23.0	34	56.4	33.43	3.8	22.45	1.6	3.2
22	26.0	38	56.4	36.60	3.8	22.45	1.6	3.2
24	28.8	41	58.0	39.78	3.8	23.39	1.6	3.2

Torque value for jam nut.

Connector size	Max. torque (m.N)
8	2,5
10	4
12	5
14	7
16	9
18	10
20	11
22	12
24	13

PT08E (SR) - 45108EC
PT08SE (SR) - 45108RC
SPT08A (SR)
SPT08E (SR)

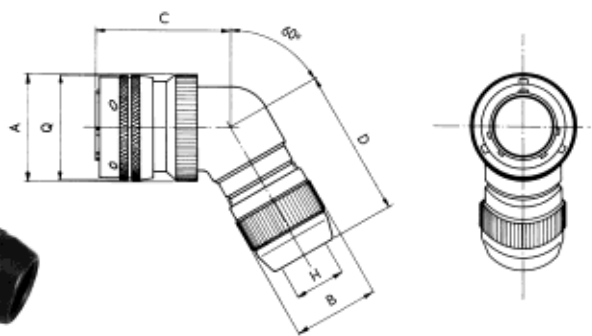
Right angle plug
with environmental
cable clamp
backshell.



Shell size	B	C		D	E	L	Q
		min.	max.				
8	16.6	4.3	6.6	16.5	8.6	53	18.6
10	19	4.3	9.8	19.5	10	55	21.4
12	20.6	6.7	9.6	19.5	11.4	58	25.8
14	23	7.8	13.8	24	13.2	61	29
16	26.2	8.4	16.2	26	14.8	65	32.2
18	25.8	11.2	17.4	29.5	15.8	69	34.9
20	27.4	12.9	19.6	32	17.3	71	38.5
22	28.9	13	21.8	34	18.8	72	41.7
24	32.1	16.7	23.4	35.5	20.2	78	44.7

PT08EK - 45108EK
PT08SK - 45108SK
SPT08EK

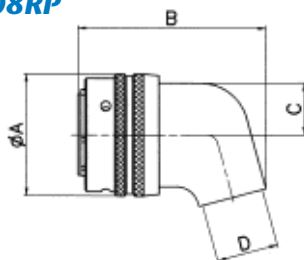
60 degrees angle plug with immersion proof sealing gland backshell with strong cable grip.



Shell size	Q	A	B	C		D	
				EK	SK	EK	SK
14	29	29.3	27	48.2	48.2	58	58
16	32.2	32.5	28.5	48.2	48.2	58	58
18	34.9	35.8	31.5	48.2	48.2	58	58
20	38.5	39	31.5	47.5	47.5	58	58
22	41.7	42	34.5	47.5	47.5	60.3	60.3

PT08P - 45108P
PT08SP - 45108RP

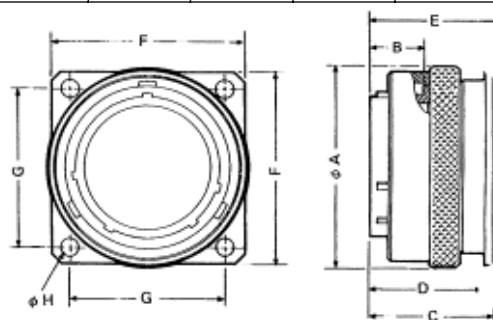
75 degrees angle plug with backshell for potting.



Shell size	Ø A max.	B		C	D
		P	SP		
8	18.6	40.9	47.2	7.32	7.9x11.1
10	21.4	44.4	50.7	8.92	11.1x14.3
12	25.8	46.7	53.1	10.5	13.1x17.5
14	29	48.3	54.7	12.1	15.9x19.8
16	32.2	49.3	55.6	13.7	16.7x22.6
18	34.9	50.3	56.7	15.27	17.9x25.4
20	38.5	57.8	60.9	16.87	19.5x28.6
22	41.7	58.8	69.0	18.45	20.6x31.3
24	44.7	67.4	70.6	20.05	23.3x34.9

PT09A
45109E

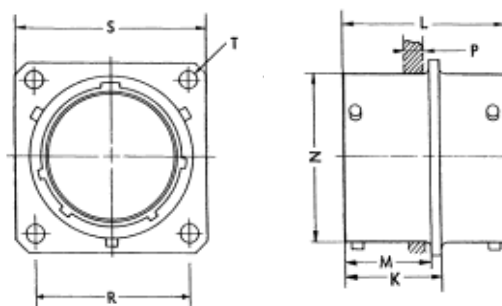
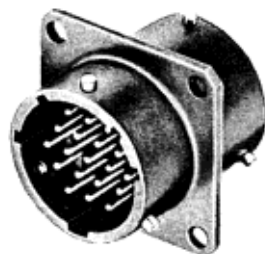
Square flange receptacle with locking ring.



Shell size	Ø A max.	B ± 0.3	C + 0.5 + 0	D ± 0.4	E + 0.7 - 0.9	F ± 0.3	G ± 0.12	Ø H ± 0.1
8	18.6	9	21	19.5	22.4	20.6	15.09	3.2
10	21.4	9	21	19.5	22.4	23.8	18.26	3.2
12	25.8	9	21	19.5	22.4	26.2	20.62	3.2
14	29	9	21	19.5	22.4	28.6	23.01	3.2
16	32.2	9	21	19.5	22.4	31	24.61	3.2
18	34.9	9	21	19.5	22.4	33.3	26.97	3.2
20	38.5	10.5	24.9	22.6	26.2	36.5	29.36	3.2
22	41.7	10.5	24.9	22.6	26.2	39.7	31.75	3.2
24	44.7	10.5	26.5	24.1	26.2	42.9	34.93	3.7

PTB
451B

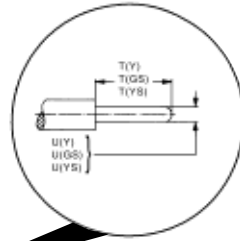
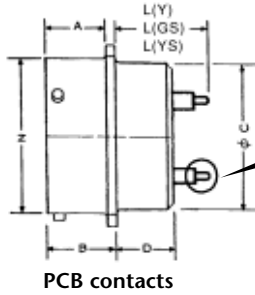
Thru bulkhead receptacle.



Shell size	K	L	M	N	P	R	S	T
8	15.9	26.67	14.27	12.01	3.5	15.09	20.6	3.05
10	15.9	26.67	14.27	14.99	3.5	18.26	23.8	3.05
12	15.9	26.67	14.27	19.05	3.5	20.62	26.2	3.05
14	15.9	26.67	14.27	22.23	3.5	23.01	28.6	3.05
16	15.9	26.67	14.27	25.4	3.5	24.61	31	3.05
18	15.9	26.67	14.27	28.58	3.5	26.97	33.3	3.05
20	19.8	33.78	17.48	31.75	3.5	29.36	36.5	3.05
22	19.8	33.78	17.48	34.93	3.5	31.75	39.7	3.05
24	19.8	33.78	17.48	38.10	3.5	34.93	42.9	3.73

PT02Y/45102Y
PT02GS
PT02YS/45102YS

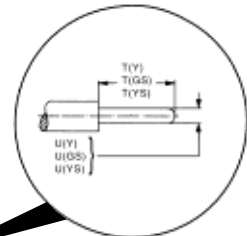
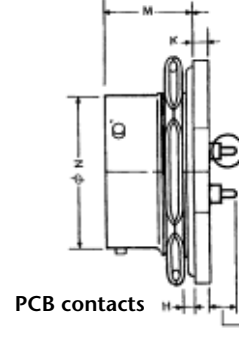
PCB receptacles



PCB contacts
 Custom designed flexible circuit possibility.
 Please consult us.

PT07Y/45107Y
PT07GS
PT07YS/45107YS

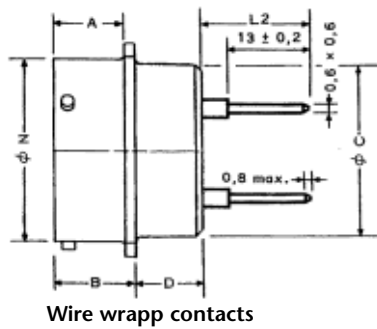
PCB receptacles



PCB contacts
 V(Y)
 V(GS)
 V(YS)

PT02MW - 45102MW

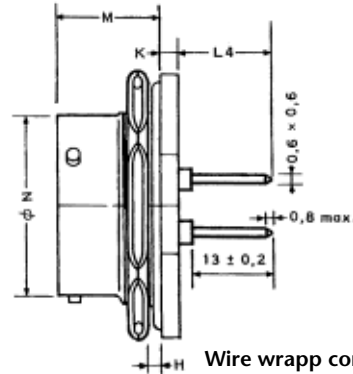
Wire wrapp receptacles



Wire wrapp contacts

PT07MW - 45107MW

Wire wrapp receptacles



Wire wrapp contacts

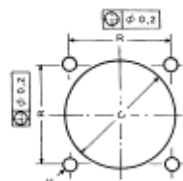
Size	A +0.25 0	B max.	C max.	D	H		K ±0.3	L2 max.	L4 max.	L(Y) +0.3 -0.5	L(GS) ±0.6	L(YS) +1.05 -1.17	M max.	N +0.02 -0.13
8	10.95	13	11.4	6.35	1.57	3.17	3.2	17	14.8	12.35	15.0	15.40	18.3	12.02
10	10.95	13	14.6	6.35	1.57	3.17	3.2	17	14.8	12.35	15.0	15.40	18.3	14.99
12	10.95	13	17.8	6.35	1.57	3.17	3.2	17	14.8	12.35	15.0	15.40	18.3	19.05
14	10.95	13	20.9	6.35	1.57	3.17	3.2	17	14.8	12.35	15.0	15.40	18.3	22.23
16	10.95	13	24.1	6.35	1.57	3.17	3.2	17	14.8	12.35	15.0	15.40	18.3	25.40
18	10.95	13	27.3	6.35	1.57	3.17	3.2	17	14.8	12.35	15.0	15.40	18.3	28.58
20	14.12	17	30.5	8.74	1.57	6.35	4	17.4	16.1	15.18	17.1	17.22	23.1	31.75
22	14.12	17	33.6	8.74	1.57	6.35	4	17.4	16.1	15.18	17.1	17.22	23.1	34.93
24	14.96	17.8	36.8	8.74	1.57	6.35	4	16.6	15.3	14.44	16.2	17.07	23.9	38.10

Size	T(Y) +0.2 -0	T(GS) ±0.1	T(YS) +0.2 -0	U(Y) +0 -0.1	U(GS) ±0.03	U(YS) +0.1 -0	V(Y) max.	V(GS) ±0.9	V(YS) ±1.25
8	3	4.5	7	0.7	0.65	0.6	4.6	6.8	8.1
10	3	4.5	7	0.7	0.65	0.6	4.6	6.8	8.1
12	3	4.5	7	0.7	0.65	0.6	4.6	6.8	8.1
14	3	4.5	7	0.7	0.65	0.6	4.6	6.8	8.1
16	3	4.5	7	0.7	0.65	0.6	4.6	6.8	8.1
18	3	4.5	7	0.7	0.65	0.6	4.6	6.8	8.1
20	3	4.5	7	0.7	0.65	0.6	5.08	7.2	9.32
22	3	4.5	7	0.7	0.65	0.6	5.08	7.2	9.32
24	3	4.5	7	0.7	0.65	0.6	5.0	6.5	8.48

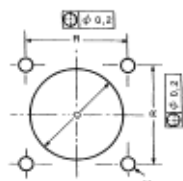
All dimensions are mentioned in mm.

Please consults us for PCB drilling dimensions

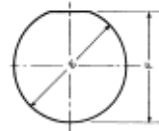
Panel drilling



00 Shell type: rear or front panel mounting



02 Shell type: front panel mounting



07 Shell type: rear panel mounting

Shell size	C min.	D +0 -0.3	E +0.3 -0	F +0 -0.3	H	R
8	13	13.8	14.5	13.8	3.5	15.10
10	16.2	17	17.7	17	3.5	18.26
12	19.4	21.1	22.5	21.1	3.5	20.62
14	22.5	24.3	25.6	24.3	3.5	23.01
16	25.7	27.5	28.8	27.5	3.5	24.61
18	28.9	30.7	32	30.7	3.5	26.97
20	32.1	33.9	35.2	33.9	3.5	29.36
22	35.2	37.1	38.3	37.1	3.5	31.75
24	38.4	40	41.5	40	4	34.92

Hermetic receptacles

Hermetic receptacles are available in three different shell types: square flange receptacle without rear accessory possibility, plain shell jam nut receptacle and solder mounting receptacle.

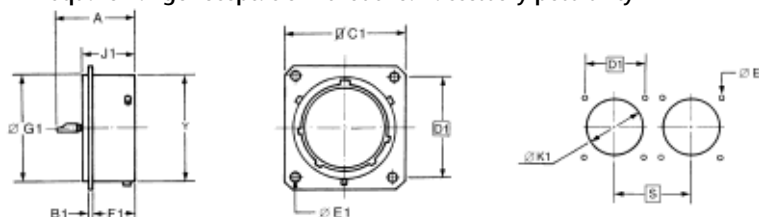
General characteristics

- Shells in steel with tin plating finish
- Glass insert
- Pin contacts in nickel alloy with tin plated solder pot termination
- Temperature range: -55°C to +125°C
- Hermeticity: Leak $\leq 10^{-6}$ cm³. s⁻¹ under 1 bar differential pressure
- Vibration: exceeds MIL-E-5272 proc. II
- Physical shock: 100 G's
- Current rating per contact: size 20 pin: 5A / size 16 pin: 10A
- Dielectric withstanding voltage (sea level): 1500 Vrms 60 cps service rating I / 2300 Vrms 60 cps service rating II

Overall dimensions

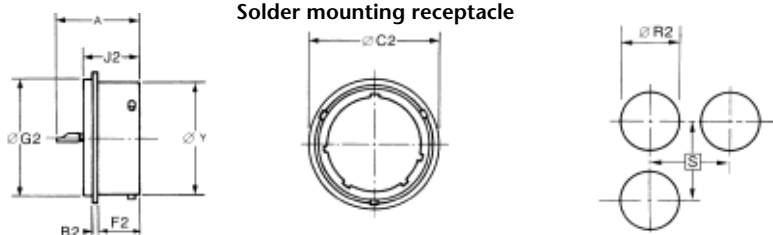
Square flange receptacle without rear accessory possibility

PT02H - 45102H



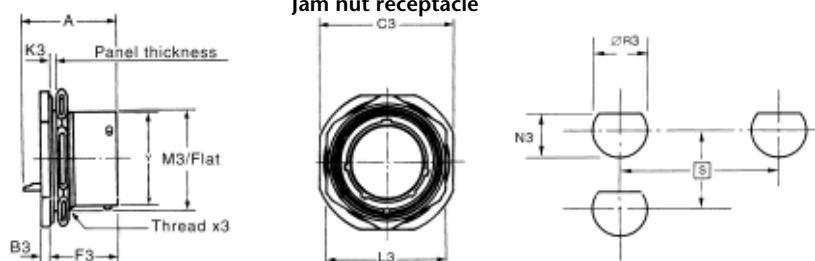
Solder mounting receptacle

PTIH - 451IH



Jam nut receptacle

PT07H - 45107H



Shell size	A max.	B1 ±0.13	B2 ±0.13	B3 ±0.13	ØC1 ±0.15	ØC2 max.	C3 max.	D1	E1 min.	F1 ±0.13	F2 ±0.13	F3 ±0.13	G1 ±0.05	ØG2 max.
08	21.03	1.57	0.91	2.39	20.62	16.00	23.93	15.09	3.05	11.25	10.82	17.93	14.22	14.27
10	21.03	1.57	0.91	2.39	23.80	19.18	27.10	18.26	3.05	11.25	10.82	17.93	17.02	17.07
12	21.03	1.57	0.91	2.39	26.19	21.56	31.88	20.62	3.05	11.25	10.82	17.93	19.79	19.84
14	21.03	1.57	0.91	2.39	28.58	24.74	35.05	23.01	3.05	11.25	10.82	17.93	22.96	23.01
16	21.03	1.57	0.91	2.39	30.94	27.91	38.23	24.61	3.05	11.25	10.82	17.93	26.14	26.19
18	21.03	1.57	0.91	2.39	33.32	31.06	41.40	26.97	3.05	11.25	10.82	17.93	29.31	29.36
20	22.61	2.36	0.91	3.18	36.50	33.45	46.15	29.36	3.05	14.25	12.40	22.71	31.70	31.75
22	22.61	2.36	0.91	3.18	39.67	36.65	49.33	31.75	3.18	14.25	12.40	22.71	34.87	34.93
24	22.61	2.36	0.91	3.18	42.85	39.80	52.50	34.92	3.18	15.06	13.23	23.55	38.05	38.10

Shell size	J1 ±0.13	J2 ±0.13	K1 ±0.13	K3 +1.6 -0	L3 +0 -0.25	M3 +0 -0.13	N3 ±0.13	ØR2 ±0.13	ØR3 ±0.13	S min.	Thread X3 Class 2A	Y ±0.8
08	14.91	14.91	14.43	1.57	19.05	13.39	13.72	14.68	14.53	31.75	0.5625-24 NEF	11.96
10	14.91	14.91	17.65	1.57	22.23	16.56	16.89	17.45	17.70	34.52	0.6875-24 NEF	14.94
12	14.91	14.91	21.95	1.57	26.97	20.70	21.03	20.24	22.48	38.89	0.8750-20 NEF	19.00
14	14.91	14.91	25.12	1.57	30.15	23.85	24.18	23.42	25.65	42.06	1.0000-20 NEF	22.17
16	14.91	14.91	28.27	1.57	33.32	27.00	27.33	26.59	28.83	45.24	1.1250-18 NEF	25.35
18	14.91	14.91	31.45	1.57	36.50	30.18	30.51	29.77	32.00	48.03	1.2500-18 NEF	28.52
20	17.27	16.48	34.62	1.57	39.67	33.35	33.68	32.16	35.18	51.59	1.3750-18 NEF	31.70
22	17.27	17.30	37.80	1.57	42.85	36.53	36.86	35.31	38.35	54.76	1.5000-18 NEF	34.87
24	18.08	18.14	41.02	1.57	46.02	39.70	40.03	38.51	41.53	57.84	1.6250-18 NEF	38.05

All dimensions are mentioned in mm.

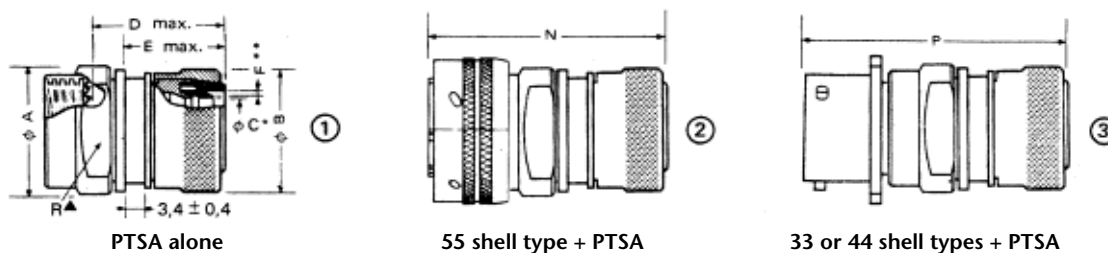
How to choose your screened backshell ?

The use of screened EMI-RFI backshells implies that the electrical continuity and screening must be well-kept between connectors. In this way, mobile plugs may be equipped with grounding fingers.

Please find below the screened backshell corresponding to your application:

PTSA backshells (Amphenol Socapex design):

- Compatible with **crimp and solder** contacts versions and in 33, 44 & 55 shell types (see end of page 22)
- High EMI-RFI protection level
- Clamping braid backshell by screwing system with free inner ring **to avoid twisting of the braid during screwing**
- Environmental when equipped with straight or right angle heatshrink molded pieces mentioned page 19
- Easy in use, no tooling required
- Ordering information: order the connector body with the help of page 22 (Amphenol particular designation) and the corresponding PTSA backshell with the help of page 23 (Amphenol particular designation)
EX: PTG55SE14-5P + PTSA141



* Maximal external diameter of acceptable cable. - ** Maximal thickness of braid.
▲R: Dimension on flat (4 flats). - Please consult us for cabling information.

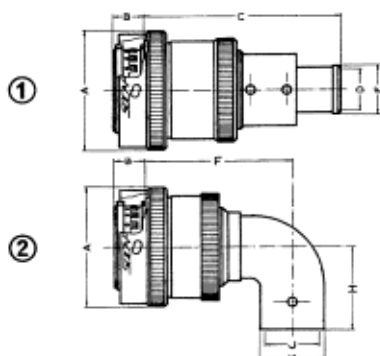
Shell size	A ±0.2	B	C	D	E	F	N max.	P max.	R
8	20	16	6.9	28.2	15.8	1	50.7	50.7	16.8
10	24	18.9	9.6	28.2	15.8	1	50.7	50.7	20.8
12	26	22.1	12.7	28.7	16.3	1	51.2	51.2	22.8
14	29	25.3	14.8	30.4	18	1	52.9	52.9	25.8
16	32	28.5	18	30.4	18	1.1	53.8	53.8	31.8
18	35	31.5	19.9	31.3	18.9	1.2	53.8	53.8	31.8
20	38	34.7	23.1	35.3	22.9	1.25	62.4	64	35.8
22	42	37.9	26.2	35.3	22.9	1.25	62.4	64	38.8
24	45	41	28.8	35.3	22.9	1.25	69	70.6	41.8

SQ backshells (in accordance with VG95328 Standard):

- Compatible with **crimp contacts** version and in 00, 01, 07 & G06 shell types
- High EMI-RFI protection level
- Clamping braid backshell by screwing system
- Environmental when equipped with straight or right angle heatshrink molded pieces mentioned page 19
- Easy in use, no tooling requested
- Ordering information: order the connector equipped with the SQ backshell with the help of page 20
EX: PTG06SE12-10SSQ (Please consult us for cabling information)

PT06G / PT08G backshells (Amphenol Socapex design):

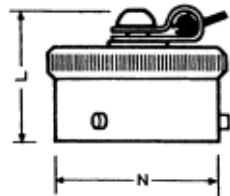
- Compatible with **solder contacts** version and in 06 & 08 shell types
- Outstanding EMI-RFI protection level
- Soldering braid backshell (the rear part of the backshell is tin-plated to allow soldering of the braid)
- Available in straight or right angle version (low profile)
- Environmental when equipped with heatshrink sleeves mentioned page 19
- Ordering information: order the connector equipped with the backshell with the help of page 20
EX: PT06G22-55P



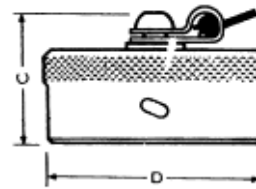
Plug shell size	① - Straight Plug PT06G					② - Right angle Plug PT08G					
	ØA max.	B ±0.3	C ±1	ØD*	E	ØA max.	B ±0.3	F ±1	H	ØJ*	ØK
8	18.6	9	37.2	9	12						
10	21.4	9	42	6	7.5	21.4	9	35	17	10	12
12	25.8	9	44.8	12.4	13.8	25.8	9	33	17	10	12
14	29	9	44.8	14	15.8	29	9	34.5	19.5	12	14
16	32.2	9	48.5	15	17.5	32.2	9	36.88	22	14	16
18	34.9	9	54.5	12.4	13.8	34.9	9	41	24	16	18
20	38.5	10.5	63	17	20	38.5	10.5	46.5	26.5	18	20
22	41.7	10.5	63	19	22	41.7	10.5	48	32	20	22

*D and J: diameter of the wire unsacketed and without braid.
Please consult us for cabling information.

Accessories Protective caps

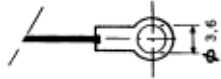


Protective cap for 06,08 shell types.



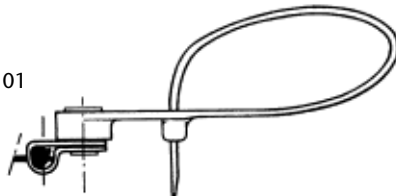
Protective cap for 00,01,02,07 shell types

Termination of the cord (or metallic chain) for 00,02 shell types protective caps.

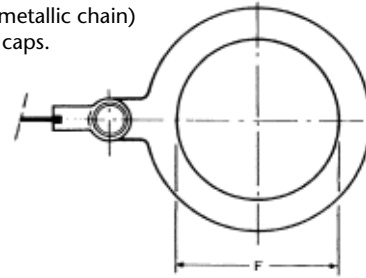


Termination of the cord for 06, 08, 01 shell types protective caps.

(* There is no termination on the metallic chain for 06, 08, 01 shell types protective caps).



Termination of the cord (or metallic chain) for 07 shell types protective caps.



The length of the cord (or metallic chain) from the protective cap to the cord extremity (or metallic chain extremity) is 160 mm long for 01, 06, 08 shell types protective caps and 105 mm long for 00, 02, 07 shell types protective caps.

Connector size	Dimensions (mm)				
	C	ØD max.	ØF	L max.	N +0.02 -0.13
8	20	17.9	14.7	18.2	12.01
10	20	20.7	17.9	18.2	14.99
12	20	25.4	22.6	18.2	19.05
14	20	28.7	25.8	18.2	22.22
16	20	31.9	29	18.2	25.40
18	20	34.7	32.2	18.2	28.57
20	20	38	35.3	19.8	31.75
22	20	41.2	38.5	19.8	34.92
24	21	44.3	41.7	20.6	38.10

CAPS Series

B ER N — 08 —

Protective cap type:

F: For plugs and screw type receptacle (06, 08, 09 shell types)

EC: For square flange receptacle and thru bulkhead receptacle (00, 02, B shell types)

ER: For jam nut receptacle (07 shell type)

P: For line mount receptacle (01 shell type)

Wire type:

N: Nylon cord, standard version

Blank: Metallic chain

PT: For plugs and screw type receptacle (06, 08, 09 shell types) - except for metallic chain
Omit for all other versions and for metallic chain

Corresponding connector shell size: 08, 10, 12, 14, 16, 18, 20, 22, 24

Finish:

Blank: Olive-drab cadmium plated (standard version)

01: Bright cadmium plated (standard version for SPT connectors)

02: Black anodised

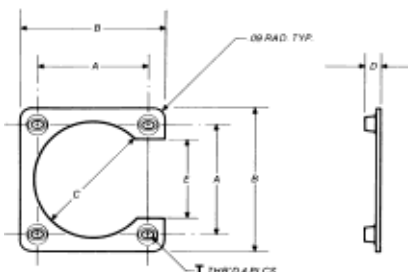
023: Electroless nickel plated

Please consult us for other dimensional characteristics (dimensions of connectors with caps mated).

Nut ring for square flange receptacle

Simplifies the fixing of square flange receptacle on the panel by eliminating loose nuts and washers, particularly recommended when installation process occurs in reduced volume. (Compatible with 00 and 02 shell types).

(Retainer material in aluminium alloy: 10.16 ±0.08 mm / Nuts in cadmium plated steel).



Shell size	P/N	T thread UNJC-3B	A ±0.02	B ±0.40	C +0.40/-0	D	E ±0.60
8	FSU-8	4.40	15.09	22.35	14.07	2.69/4.22	7.82
10	FSU-10	4.40	18.26	25.88	17.48	2.69/4.22	11.00
12	FSU-12	4.40	20.62	27.89	21.03	2.69/4.22	13.36
14	FSU-14	4.40	23.01	30.28	24.21	2.69/4.22	15.75
16	FSU-16	4.40	24.61	31.88	27.79	2.69/4.22	17.35
18	FSU-18	4.40	26.97	34.24	30.10	2.69/4.22	19.71
20	FSU-20	4.40	29.36	38.10	33.15	2.69/4.22	21.97
22	FSU-22	4.40	31.75	40.46	36.27	2.69/4.22	23.04
24	FSU-24	6.32	34.93	44.45	39.62	3.12/4.65	25.40

Dummy receptacles, panel gaskets, plastic dust caps

Shell size	Dummy receptacles	Square flange receptacle panel gaskets (thickness 0.6 mm)	Plastic dust caps for plug	Plastic dust caps for receptacle
8	FE 08	JE 08	805 421	805 411
10	FE 10	JE 10	805 411	805 412
12	FE 12	JE 12	805 412	805 413
14	FE 14	JE 14	805 413	805 414
16	FE 16	JE 16	805 414	805 415
18	FE 18	JE 18	805 415	805 416
20	FE 20	JE 20	805 416	805 417
22	FE 22	JE 22	805 417	805 418
24	FE 24	JE 24	805 418	805 429

Contacts and contacts accessories

(Crimp contacts are delivered with the connector in PT and SPT series and are mentioned here as spare parts).

Designation	PT or 451 series	SPT series
Size 20 pin contacts (from 8 to 18 shell sizes)	800600	800650
Size 20 pin contacts (from 20 to 24 shell sizes)	800600	800651
Size 20 socket contacts (from 8 to 18 shell sizes)	800615	800654
Size 20 socket contacts (from 20 to 24 shell sizes)	800615	800655
Size 16 pin contacts (from 8 to 18 shell sizes)	800620	800660
Size 16 pin contacts (from 20 to 24 shell sizes)	800620	800661
Size 16 socket contacts (from 8 to 18 shell sizes)	800635	800664
Size 16 socket contacts (from 20 to 24 shell sizes)	800635	800665
Reducing sleeve for size 20 contacts	800609	800612
Reducing sleeves for size 16 contacts	-	800629
Sealing plug size 20	900021 (red)	900021 (red)
Sealing plug size 16	900020 (blue)	900020 (blue)

Heatshrink molded pieces or sleeves for rear accessories

Heatshrink molded pieces compatible with following rear accessories: SQ, J (backshells delivered with the connector) / PTSA (backshell delivered separately).

Shell size	8	10	12	14	16	18	20	22	24
Straight piece	804221	804222	804223	804223	804225	804225	804227	804227	804229
Right angle piece	804231	804232	804233	804233	804235	804235	804237	804237	804239

Heatshrink sleeves compatible with PT06G and PT08G connectors

Shell size	8	10	12	14	16	18	20	22
Straight piece	804201	804202	804203	804203	804205	804206	804206	804206
Right angle piece	-	804213	804213	804214	804214	804216	804216	804218

Tooling

Designation	Amphenol Socapex P/N	Military P/N
Crimping pliers for PT/451/SPT series	809857	M22520/1-01
Turret for pliers 809857 and PT/451 series contacts	809861	M22520/1-02
Turret for pliers 809857 and SPT series contacts	21770	-
Metallic contact insertion tool for PT/451 size 20 contacts	809709	-
Metallic contact insertion tool for PT/451 size 16 contacts	809743	-
Metallic contact removal tool for PT/451 size 20 contacts (front release)	809710	-
Metallic contact removal tool for PT/451 size 16 contacts (front release)	809711	-
Termination of PT/451 size 20 contacts removal tool (spare part)	809753	-
Termination of PT/451 size 16 contacts removal tool (spare part)	809773	-
Metallic contact insertion tool for SPT size 20 contacts	39048	-
Metallic contact insertion tool for SPT size 16 contacts	48680	-
Metallic contact removal tool for SPT size 20 PIN contacts (front release)	809729	-
Metallic contact removal tool for SPT size 20 SOCKET contacts (front release)	809730	-
Metallic contact removal tool for SPT size 16 PIN contacts (front release)	809731	-
Metallic contact removal tool for SPT size 16 SOCKET contacts (front release)	809732	-

Tools for rear accessories

Designation	Amphenol Socapex P/N	Military P/N
Pliers for PT/451/SPT series rear accessories tightening	809720	-
Tightening support for plug rear accessories (all sizes dummy receptacles on a chassis)	809717	-

• AMPHENOL DESIGNATION

SOLDER, CRIMP, PCB, WIRE WRAPP VERSIONS, CONNECTOR WITH REAR ACCESSORY

PT Series	PT	00	E	12	10	P	—	—	—
<p>Shell type:</p> <p>00: Square flange receptacle with rear accessory possibility (see p.5/6)</p> <p>01: Line mount receptacle (see p.7/8)</p> <p>02: Square flange receptacle without rear accessory possibility (see p.6/15/16)</p> <p>06: Straight plug (see p.9/10/11)</p> <p>07: Jam nut receptacle (see p.12/13/15/16)</p> <p>08: Right angle plug (see p.13/14)</p> <p>09: Square flange receptacle with locking ring (see p.14)</p> <p>I: Solder mounting receptacle (hermetic version) (see p.16)</p> <p>B: Thru bulkhead receptacle (see p.14)</p> <p>G06(SQ): Straight plug with grounding fingers for SQ braid clamping backshell (see bellow rear accessory particularity) (see p.11)</p>									
<p>Service class and rear accessory capability: (See page X for details)</p> <p>Solder version:</p> <p>A: Non-environmental intermediate backshell (for 00, 01, 06 shell types) and non-environmental, no rear accessory (for 02, 09 and plain shell 07 shell types) ■</p> <p>A (SR): Non-environmental cable clamp backshell (for 00, 01, 06, 07 shell types)</p> <p>C: Air leakage controlled, no rear accessory (for 02 and plain shell 07 shell types)</p> <p>E: Environmental backnut (for 00, 01, 06, 07 shell types) or standard version for 02 shell type (no rear accessory) ■</p> <p>E (SR): Environmental cable clamp backshell (for 00, 01, 06, 07, 08 shell types)</p> <p>G: With grounding fingers and braid soldering backshell (for 06, 08 shell types but not available in size 8 for 08 shell type and size 24 for 06 and 08 shell types).</p> <p>P: Backshell for potting (straight for 00, 01, 06, 07 shell types and 75° angle for 08 shell type)</p> <p>W: Environmental sealing gland backshell (for 00, 01, 06 shell types)</p> <p>H: Hermetic version, no rear accessory possibility (for 02, 07 and I shell types)</p> <p>EK(X)*: Immersion proof sealing gland backshell with strong cable grip (for 01, 06, 08 shell types)</p> <p>KM(X)*: Rain proof sealing gland backshell with strong cable grip and earth line (for 01, 06 shell types)</p> <p>Crimp version:</p> <p>SE: Environmental backnut (for 00, 01, 06, 07 shell types and for 02 shell type without backnut)</p> <p>SE(SR): Environmental cable clamp backshell (for 00, 01, 06, 07 shell types)</p> <p>SP: Straight backshell for potting (for 00, 01, 06, 07, 08 shell types)</p> <p>SK(X)*: Immersion proof sealing gland backshell with strong cable grip (for 01, 06, 08 shell types)</p> <p>Other versions:</p> <p>MW: Wire wrapp (for 02 and plain shell 07 shell types)</p> <p>Y/YS/GS: PCB version (for 02 and plain shell 07 shell types)</p> <p>Blank: for thru bulkhead receptacle</p>									
<p>Shell size: 8/10/12/14/16/18/20/22/24</p>									
<p>Contact insert arrangement: See page 4</p>									
<p>Contact type: P: Pin PS: For thru bulkhead receptacle S: Socket</p>									
<p>Coding / Insert alternate positioning: Blank for normal or W, X, Y, Z. See coding system page 3</p>									
<p>Rear accessory particularity:</p> <p>SR: With strain relief clamp (for A, E, SE service classes)</p> <p>PG: With straight adaptor terminated by a PG type plastic sealing gland (for 06, 00, 01 shell types / A service class)</p> <p>SQ: With environmental backshell for screen termination and heatshrink molded piece (for 00, 01, 07, G06 shell types / SE service class)</p> <p>J: With environmental backnut for heatshrink molded piece (for 00, 01, 06 shell types / E, SE service classes)</p> <p>Omit for all other versions</p>									
<p>Shell finish:</p> <p>Omit for standard olive drab cadmium plate over nickel. Hermetic connectors are all supplied with tin plated shells.</p> <p>01: Bright cadmium plated</p> <p>02: Black anodised</p> <p>023: Electroless nickel</p>									

•: Replace "X" after EK, KM or SK by the number of the corresponding joint (refer to end of page 11).

▪: PTO2E & PTO2A designations are equivalent.

• **BNAE NF. L54125 DESIGNATION**

SOLDER, CRIMP, PCB, WIRE WRAPP VERSIONS, CONNECTOR WITH REAR ACCESSORY

451 Series	451	00	EC	12	10	P	—	—	50	—
<p>Shell type: 00: Square flange receptacle with backshell possibility (see p.5/6) 01: Line mount receptacle (see p.7/8) 02: Square flange receptacle without rear accessory possibility (see p.6/15/16) 06: Straight plug (see p.9/10/11) 07: Jam nut receptacle (see p.12/13/15/16) 08: Right angle plug (see p.13/14) 09: Square flange receptacle with locking ring (see p.14) i: Solder mounting receptacle (hermetic version) (see p.16) B: Thru bulkhead receptacle (see p.14)</p>										
<p>Service class and rear accessory capability: Solder version: A: Non-environmental intermediate backshell (for 00, 01, 06 shell types) A: Standard version for 07 shell type AC: Non-environmental cable clamp backshell (for 00, 01, 06 shell types) E: Environmental backnut (for 00, 01, 06, 07 shell types) E: Standard version for 02, 09 shell types (no rear accessory) EC: Environmental cable clamp backshell (for 00, 01, 06, 07, 08 shell types) J: Environmental sealing gland backshell (for 00, 01, 06 shell types) P: Backshell for potting (straight for 00, 01, 06, 07 shell types and 75° angle for 08 shell types) T: Environmental backnut for heatshrink molded piece (for 00, 01, 06 shell types) H: Hermetic versions, no rear accessory possibility (for 02, 07 shell types) EK(X)*: Immersion proof sealing gland backshell with strong cable grip (for 01, 06, 08 shell types) KM(X)*: Rain proof sealing gland backshell with strong cable grip and earth line (for 01, 06 shell types) Crimp version: R: Environmental backnut (for 00, 01, 06, 07 shell types and for 02 shell type without backnut) RA: Environmental intermediate backshell (for 00, 01, 06 shell types) RC: Environmental cable clamp backshell (for 00, 01, 06, 07, 08 shell types) RP: Backshell for potting (straight for 00, 01, 06, 07 shell types and 75° angle for 08 shell types) RT: Environmental backnut for heatshrink molded piece (for 00, 01, 06 shell types) SK(X)*: Immersion proof sealing gland backshell with strong cable grip (for 01, 06, 08 shell types) Other versions: MW: Wire wrapp (for 02 and plain shell 07 shell types) Y/YS/GS: PCB version (for 02 and plain shell 07 shell types) Blank: for thru bulkhead receptacle</p>										
<p>Shell size: 8/10/12/14/16/18/20/22/24</p>										
<p>Contact insert arrangement: See page 4</p>										
<p>Contact type: P: Pin PS: For thru bulkhead receptacle S: Socket</p>										
<p>Coding / Insert alternate positioning: Blank for normal or W, X, Y, Z. See coding system page 3.</p>										
<p>Rear accessory particularity: PG: With straight adaptor terminated by a PG type plastic sealing gland (for 00, 01, 06 shell types / A service class) Omit for all other versions</p>										
<p>50: Obligatory suffix</p>										
<p>Finish: Blank for standard olive drab cadmium plate over nickel 01: Bright cadmium plated 02: Black anodised 70: Electroless nickel</p>										

•: Replace "X" after EK, KM or SK by the number of the corresponding joint. Refer to end of page 11 to define this number.

• AMPHENOL DESIGNATION

CRIMP VERSION FOR INDUSTRIAL APPLICATION, CONNECTOR WITH REAR ACCESSORY, WHITE CADMIUM PLATED

SPT Series	SPT	00	E	12	10	P	—	—
Shell type: 00: Square flange receptacle with backshell possibility (see p.5/6) 01: Line mount receptacle (see p.7/8) 02A: Square flange receptacle without rear accessory possibility 06: Straight plug (see p.9/10/11) 07: Jam nut receptacle (see p.12) 08: Right angle plug (see p.8/9)								
Service class and backshell capability: A (SR): Non-environmental cable clamp backshell (for 00, 01, 06, 07 shell types) E: Environmental backnut (for 00, 01, 06, 07 shell types) E (SR): Environmental cable clamp backshell (for 00, 01, 06, 07, 08 shell types) W: Environmental sealing gland backshell (for 00, 01, 06 shell types) EK(x)*: Immersion proof sealing gland backshell with strong cable grip (for 01, 06, 08 shell types) PG: With straight adaptor terminated by a PG type plastic sealing gland (for 06, 00, 01 shell types / A, R service classes)								
Shell size: 8/10/12/14/16/18/20/22/24								
Contact insert arrangement: See page 4								
Contact type: P: Pin S: Socket								
Coding / insert alternate positioning: Blank for normal or W, X, Y, Z. See coding system page 3								
Rear accessory particularity: (Blank for normal) SR: With strain relief clamp (for A, E service classes) PG: With straight adaptor terminated by a PG type plastic sealing gland (for 06, 00, 01 shell types / A service class)								

• AMPHENOL PARTICULAR DESIGNATION

SOLDER, CRIMP VERSIONS, CONNECTOR BODY ONLY WITHOUT REAR ACCESSORY

PT Series	PT	G	55	A	16	8	P	—	—
G: With grounding fingers (for 55 plug bodies only) Omit for standard version									
55 or 06: Plug body with serrations* (for braid backshells or right angle strain relief clamp). Consult us for dimensional information 05: Plug body without serrations* (for straight backshell) 44: In-line receptacle style with serrations* 33: 00 square flange receptacle style with serrations*									
A: Solder version SE: Crimp version									
Connector shell size: 8/10/12/14/16/18/20/22/24									
Contact insert arrangement: See page 4									
Contact type: P: Pin S: Socket									
Coding / insert alternate positioning: Blank for normal or W, X, Y, Z. See coding system page 3									
Finish: Omit for standard olive drab cadmium plate over nickel 01: Bright cadmium plated 02: Black anodised 023: Electroless nickel									

Please consult us for dimensional characteristics. *serrations: 360° accessories orientation teeth.

• AMPHENOL PARTICULAR DESIGNATION

PTSA SCREENED CLAMPING BRAID BACKSHELL ACCEPTING HEATSHRINK MOLDED PIECE FOR G55, 44, 33 CONNECTOR BODIES MENTIONED PREVIOUS PAGE

PTSA Series	PTSA	10	1	—
Backshell size corresponding to connector body shell size: 8/10/12/14/16/18/20/22				
1: Corresponding to standard braid thickness				
Finish: Omit for standard olive drab cadmium plate over nickel 01: Bright cadmium plated 07: Electroless nickel				

Dimensional characteristics, mentioned page 17. Consult us for other dimensions.

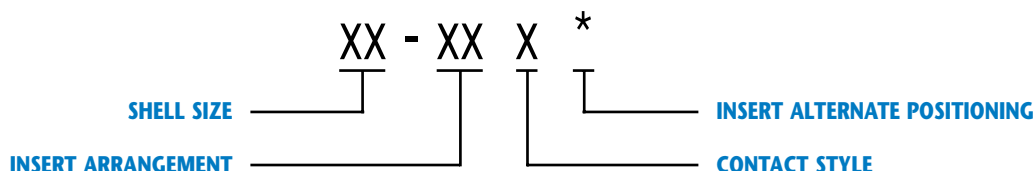
Cross references chart

(all mentioned markings are available by Amphenol Socapex).

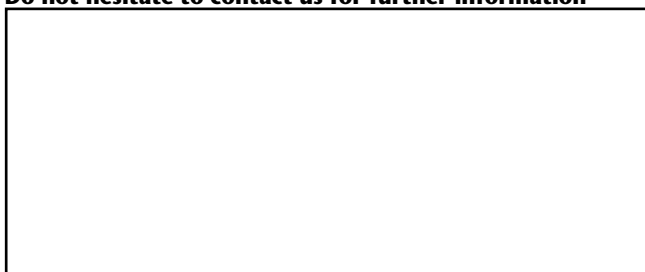
Olive drab-cadmium plated / Solder, crimp, PCB, wire wrap versions and hermetics.

Amphenol	BNAE NF. L54125	NFC93422	Mil-C-26482G Ser. I	VG95328
PT00Axx-xx x *	45100Axx-xx x * 50	HE301B00Axx-xx x * 1A		
PT00Axx-xx x * SR	45100ACxx-xx x * 50	HE301B00ACxx-xx x * 1A		
PT00Axx-xx x * PG	45100Axx-xx x * PG50			
PT00Cxx-xx x *				
PT00Exx-xx x *	45100Exx-xx x * 50	HE301B00Exx-xx x * 1A	MS3110Exx-xx x *	
PT00Exx-xx x * SR	45100ECxx-xx x * 50	HE301B00ECxx-xx x * 1A	MS3110Fxx-xx x *	
PT00Exx-xx x * J	45100Txx-xx x * 50			
PT00Pxx-xx x *	45100Pxx-xx x * 50	HE301B00Pxx-xx x * 1A	MS3110Pxx-xx x *	
PT00Wxx-xx x *	45100Jxx-xx x * 50	HE301B00Jxx-xx x * 1A		
PT00SExx-xx x *	45100Rxx-xx x * 50	HE301B00Rxx-xx x * 1A	MS3120Exx-xx x *	VG95328Axx-xx x *
PT00SExx-xx x * SR	45100RCxx-xx x * 50	HE301B00RCxx-xx x * 1A	MS3120Fxx-xx x *	VG95328Bxx-xx x *
PT00SExx-xx x * J	45100RTxx-xx x * 50			
PT00SPxx-xx x *	45100RPxx-xx x * 50	HE301B00RPxx-xx x * 1A	MS3120Pxx-xx x *	
PT01Axx-xx x *	45101Axx-xx x * 50	HE301B01Axx-xx x * 1A		
PT01Axx-xx x * SR	45101ACxx-xx x * 50	HE301B01ACxx-xx x * 1A		
PT01Axx-xx x * PG	45101Axx-xx x * PG50			
PT01Exx-xx x *	45101Exx-xx x * 50	HE301B01Exx-xx x * 1A	MS3111Exx-xx x *	
PT01Exx-xx x * SR	45101ECxx-xx x * 50	HE301B01ECxx-xx x * 1A	MS3111Fxx-xx x *	
PT01Exx-xx x * J	45101Txx-xx x * 50			
PT01EK(x)xx-xx x *	45101EK(x)xx-xx x * 50			
PT01KM(x)xx-xx x *	45101KM(x)xx-xx x * 50			
PT01Pxx-xx x *	45101Pxx-xx x * 50	HE301B01Pxx-xx x * 1A	MS3111Pxx-xx x *	
PT01Wxx-xx x *	45101Jxx-xx x * 50	HE301B01Jxx-xx x * 1A		
PT01SExx-xx x *	45101Rxx-xx x * 50	HE301B01Rxx-xx x * 1A	MS3121Exx-xx x *	
PT01SExx-xx x * SR	45101RCxx-xx x * 50	HE301B01RCxx-xx x * 1A	MS3121Fxx-xx x *	
PT01SExx-xx x * J	45101RTxx-xx x * 50			
PT01SK(x)xx-xx x *	45101SK(x)xx-xx x * 50			
PT01SPxx-xx x *	45101RPxx-xx x * 50	HE301B01RPxx-xx x * 1A	MS3121Pxx-xx x *	
PT1Hxx-xx x *				
PT02Axx-xx x *				
PT02Cxx-xx x *				
PT02Exx-xx x *	45102Exx-xx x * 50	HE301B02Exx-xx x * 1A	MS3112Exx-xx x *	VG95328Hxx-xx x *
PT02SExx-xx x *	45102Rxx-xx x * 50	HE301B02Rxx-xx x * 1A	MS3122Exx-xx x *	VG95328Cxx-xx x *
PT02Hxx-xx x *				
PT02MWxx-xx x *	45102MWxx-xx x * 50			
PT02Yxx-xx x *	45102Yxx-xx x * 50			
PT02YSxx-xx x *	45102YSxx-xx x * 50			
PT02GSxx-xx x *	45102GSxx-xx x * 50			

Amphenol	BAE NF. L54125	NFC93422	Mil-C-26482G Ser. I	VG95328
PT06Axx-xx x *	45106Axx-xx x * 50	HE301B06Axx-xx x * 1A		
PT06Axx-xx x * SR	45106ACxx-xx x * 50	HE301B06ACxx-xx x * 1A		
PT06Axx-xx x * PG	45106Axx-xx x * PG50			
PT06Exx-xx x *	45106Exx-xx x * 50	HE301B06Exx-xx x * 1A	MS3116Exx-xx x *	
PT06Exx-xx x * SR	45106ECxx-xx x * 50	HE301B06ECxx-xx x * 1A	MS3116Fxx-xx x *	
PT06Exx-xx x * J	45106Txx-xx x * 50			
PT06EK(x)xx-xx x *	45106EK(x)xx-xx x * 50			
PT06KM(x)xx-xx x *	45106KM(x)xx-xx x * 50			
PT06Gxx-xx x *				
PT06Pxx-xx x *	45106Pxx-xx x * 50	HE301B06Pxx-xx x * 1A	MS3116Pxx-xx x *	
PT06Wxx-xx x *	45106Jxx-xx x * 50	HE301B06Jxx-xx x * 1A		
PT06SExx-xx x *	45106Rxx-xx x * 50	HE301B06Rxx-xx x * 1A	MS3126Exx-xx x *	
PT06SExx-xx x * SR	45106RCxx-xx x * 50	HE301B06RCxx-xx x * 1A	MS3126Fxx-xx x *	VG95328Kxx-xx x *
PT06SExx-xx x * J	45106RTxx-xx x * 50			VG95328Jxx-xx x *
PT06SK(x)xx-xx x *	45106SK(x)xx-xx x * 50			
PT06SPxx-xx x *	45106RPxx-xx x * 50	HE301B06RPxx-xx x * 1A	MS3126Pxx-xx x *	
PTG06SExx-xx x * SQ				VG95328Mxx-xx x *
PT07Axx-xx x *	45107Axx-xx x * 50	HE301B07Axx-xx x * 1A		
PT07Axx-xx x * SR	45107ACxx-xx x * 50	HE301B07ACxx-xx x * 1A		
PT07Cxx-xx x *				
PT07Exx-xx x *	45107Exx-xx x * 50	HE301B07Exx-xx x * 1A	MS3114Exx-xx x *	
PT07Exx-xx x * SR	45107ECxx-xx x * 50	HE301B07ECxx-xx x * 1A	MS3114Fxx-xx x *	
PT07Pxx-xx x *	45107Pxx-xx x * 50	HE301B07Pxx-xx x * 1A	MS3114Pxx-xx x *	
PT07SExx-xx x *	45107Rxx-xx x * 50	HE301B07Rxx-xx x * 1A	MS3124Exx-xx x *	VG95328Dxx-xx x *
PT07SExx-xx x * SR	45107RCxx-xx x * 50	HE301B07RCxx-xx x * 1A	MS3124Fxx-xx x *	VG95328Exx-xx x *
PT07SPxx-xx x *	45107RPxx-xx x * 50	HE301B07RPxx-xx x * 1A	MS3124Pxx-xx x *	
PT07SExx-xx x * SQ				VG95328Txx-xx x *
PT07Hxx-xx x *	45107Hxx-xx x * 50			
PT07MWxx-xx x *	45107MWxx-xx x * 50			
PT07Yxx-xx x *	45107Yxx-xx x * 50			
PT07YSxx-xx x *	45107YSxx-xx x * 50			
PT07GSxx-xx x *	45107GSxx-xx x * 50			
PT08Exx-xx x *	45108ECxx-xx x * 50	HE301B08ECxx-xx x * 1A		
PT08EK(x)xx-xx x *	45108EK(x)xx-xx x * 50			
PT08Pxx-xx x * SR	45108Pxx-xx x * 50	HE301B08Pxx-xx x * 1A		
PT08SExx-xx x * SR	45108RCxx-xx x * 50	HE301B08RCxx-xx x * 1A		
PT06SK(x)xx-xx x *	45108SK(x)xx-xx x * 50			
PT08SPxx-xx x *	45108RPxx-xx x * 50	HE301B07RPxx-xx x * 1A		
PT09Axx-xx x *	45109Exx-xx x * 50			
PTBxx-xx xx *	451Bxx-xx xx * 50			



Do not hesitate to contact us for further information



Amphenol

Amphenol Socapex
Mil/Aero & Industrial Business Unit

948, Promenade de l'Arve - BP 29
 F - 74311 Thyez Cedex
 Tel.: +33 (0) 4 50 89 28 00 - Fax: +33 (0) 4 50 96 19 41
<http://www.amphenol.com>

Sales office

Tel.: +33 (0) 1 49 05 30 00 - Fax: +33 (0) 1 49 05 30 43

X-ON Electronics

Largest Supplier of Electrical and Electronic Components

Click to view similar products for [Standard Circular Connector](#) category:

Click to view products by [Amphenol](#) manufacturer:

Other Similar products are found below :

[C015](#) [10F006](#) [001](#) [1](#) [5M2530B10P](#) [600247N007](#) [600259N006](#) [6280-2PG-519](#) [6280-3PG-311](#) [6280-3SG-311](#) [6280-7SG-3DC](#) [6280-7SG-522](#)
[6282-2SG-321](#) [6282-5PG-311](#) [6282-6PG-519](#) [6283-11](#) [6283-15](#) [6290](#) [6293](#) [6382-2PG-311](#) [6382-2SG-321](#) [6382-2SG-3DC](#) [6382-4SG-516](#)
[67-03E20-37P](#) [680-SMG](#) [681-PMG](#) [CXS3102A14S2P](#) [CXS3102A181S](#) [D38999/20FC8SA L/C](#) [MB12P-1](#) [MB12R-6](#) [7251-2PG-300](#) [7251-2SG-300](#) [7251-4PG-300](#) [7251-4SG-300](#) [7251-5PG-300](#) [7251-5SG-300](#) [7251-6SG-300](#) [7251-7PG-300](#) [7251-8PG-300](#) [7271-6SG-300](#) [7282-3PG-300-CH3](#) [7282-8PG-3ES](#) [73000005663](#) [75-190216-08S](#) [75-190218-10P](#) [75-190614-07S](#) [75-214636-52P](#) [75-474118-10P](#) [75-474211-03P](#) [75-474218-19S](#) [75-474618-01S](#) [75-474620-07P](#)