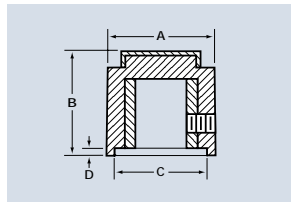


Designer Series



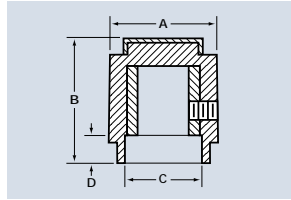
Round



Part Number		NUT CLEARANCE		TO COMPLETE PART NUMBER				
Plain Cap	w/Indicator Dot	A Diam.	B Height	C Diam.	D Depth	Style	Shaft Hole	Color
PC0N	DC0N	.500	.505	.435	.026	N	1	B
PC1N	DC1N	.700	.605	.485	.026		2	S
PC2N	DC2N	.900	.760	.640	.114		G	
PC3N	DC3N	1.250	.630	.750	.114		J	



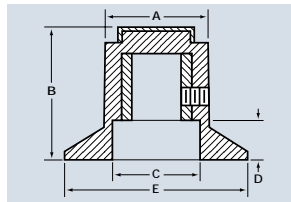
Skirted Round



Part Number		NUT CLEARANCE		TO COMPLETE PART NUMBER				
Plain Cap	w/Indicator Dot	A Diam.	B Height	C Diam.	D Depth	Style	Shaft Hole	Color
PC0D	DC0D	.500	.680	.300	.177	D	1	B
PC1D	DC1D	.700	.792	.485	.188		2	S
PC2D	DC2D	.900	.995	.640	.320		G	
PC3D	DC3D	1.250	.805	.750	.250		J	



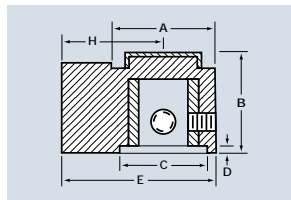
Dial



Part Number		NUT CLEARANCE		TO COMPLETE PART NUMBER					
Plain Cap	w/Indicator Dot	A Diam.	B Height	C Diam.	D Depth	E Width	Style	Shaft Hole	Color
PC0F	DC0F	.500	.680	.300	.177	.900	F	1	B
PC1F	DC1F	.700	.792	.485	.188	1.150		2	S
PC2F	DC2F	.900	.995	.640	.320	1.500		G	
PC3F	DC3F	1.250	.805	.750	.250	1.837		J	



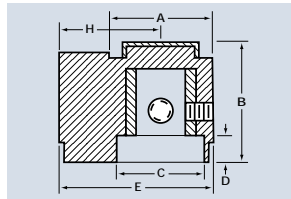
Pointer



Part Number		NUT CLEARANCE		TO COMPLETE PART NUMBER						
Plain Cap	w/Indicator Dot	A Diam.	B Height	C Diam.	D Depth	E Length	H Swing	Style	Shaft Hole	Color
PC0P	DC0P	.500	.505	.435	.026	-	.490	P	1	B
PC1P	DC1P	.700	.605	.485	.026	-	.680		2	S
PC2P	DC2P	.900	.760	.640	.114	-	.885		G	
										J



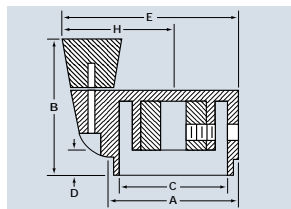
Skirted Pointer



Part Number		NUT CLEARANCE		TO COMPLETE PART NUMBER						
Plain Cap	w/Indicator Dot	A Diam.	B Height	C Diam.	D Depth	E Length	H Swing	Style	Shaft Hole	Color
PC0K	DC0K	.500	.680	.300	.177	-	.490	K	1	B
PC1K	DC1K	.700	.792	.485	.188	-	.680		2	S
PC2K	DC2K	.900	.995	.640	.320	-	.885		G	
										J



Spinner



Part Number		NUT CLEARANCE		TO COMPLETE PART NUMBER						
Plain Cap	w/Indicator Dot	A Diam.	B Height	C Diam.	D Depth	E Width	H Swing	Style	Shaft Hole	Color
DS 125-6-		1.250	1.350	.685	.250	1.715	1.090	S	1	B
DS 175-6-		1.750	1.758	.685	.320	2.359	1.484		2	S
									G	
										J

ORDERING GUIDE FOR DESIGNER SERIES

Cap Style and Diameter	Style	Shaft Hole	Color
Indicate Part Number from Tables Above	N- Round	1- 1/8" Round	B- Matte Black
	D- Skirted Round	2- 1/4" Round	S- Gloss Black
	F- Dial		G- Matte Gray
	P- Pointer		J- Gloss Gray
	K- Skirted Pointer		
	S- Spinner		

All Designer Series knobs come standard with 2 set screws.

Cap, Diam. & Style	Shaft Hole	Color
Plain Cap	.250"	Matte Black
EXAMPLE: PC1N-2-B	PC1N- 2 -	B

X-ON Electronics

Largest Supplier of Electrical and Electronic Components

Click to view similar products for [ehc manufacturer](#):

Other Similar products are found below :

[PVS-25B-2](#) [3488-2B](#) [DS125-6-2G](#) [MS91528-0E1B](#) [EH71-1P2S](#) [PV-32B-2](#) [EH71-4C2S](#) [MS91528-3F2B](#) [409P2B](#) [3489-1-B](#) [MS91528-1K2S](#)
[PB-12B-1](#) [EH71-3F2S](#) [EH71-0K1S](#) [407R2B](#) [MS91528-3R2B](#) [409D2B](#) [EH71-4E2S](#) [EH71-1DSB2S](#) [409PD2B](#) [EH71-0C1S](#) [MS91528-](#)
[OD1B](#) [MS91528-1K1B](#) [EH710NP1S](#) [EH71-1D2S](#) [MS91528-4S2B](#) [EH71-3C2S](#) [MS91528-1B2B](#) [3442-2-B](#) [3441-2-B](#) [3440-1-B](#) [MS91528-](#)
[4F2B](#) [EH71-2C2S](#) [3008-1-B](#) [PC1F2B](#) [407D2B](#) [MS91528-0F1B](#) [MS91528-1D1B](#) [MS91528-2F2B](#) [MS91528-1D2B](#) [MS91528-1II2B](#)
[MS91528-1F2S](#) [3008-2-B](#) [MS91528-1P2S](#) [3010-2-B](#) [EH712F2S](#) [EH71-2P2S](#) [MS91528-2P2B](#) [MS91528-2D2B](#) [EH71-1GG2S](#)