

Torque Screwdrivers



Assembly work demands higher and higher accuracy.

We offer a new and different line of Torque Screwdrivers to fulfill the advanced needs of the professional user. From now on fastening circuit boards and components into all types of electronic and other sensitive devices will be simple and easy to do.

High Precision Torque Screwdrivers

True to tradition of offering only the best in high precision tools, Lindstrom introduces a new generation of Torque Screwdrivers. The unique cam-over torque limiting design eliminates over-application of force, thereby reducing damages, rejects, and rework costs.

The elegant and robust Torque Screwdrivers are user-friendly designed with a comfortable shape and a non-slip grip. There are two models available, the Micro-Adjustable and the Preset Torque Screwdriver.

The Micro-Adjustable Torque Screwdriver.

A flexible tool for varied tasks. Torque is easily and accurately changed with a unique adjusting knob and an easy-to-read window scale.

<i>Torque ranges*Prod code</i>	
10-80 Ncm	MA 500-1
40-200 Ncm	MA 500-2
50-450 Ncm	MA 500-3
20-100 in. ozs.	MAL 500-1**
3-15 in. lbs.	MAL 500-2**
5-40 in. lbs.	MAL 500-3**

**Accuracy +/- 6%.
**Available in US only.*



MA500-1



MA500-2



MA500-3

The Preset Torque Screwdriver

Outstanding for high-volume use in assembly where precision and repeatability is paramount. Torque values are easily set on this durable driver.

<i>Torque ranges*</i>	<i>Prod code</i>
4-22 Ncm, 6 -32 in. ozs.	PS 501-1
7-70 Ncm, 10-100 in. ozs.	PS 501-2
15-170 Ncm, 1.5-15 in. lbs.	PS 501-3
45-450 Ncm, 4-40 in. lbs.	PS 501-4

**Accuracy +/- 6%.*



PS501-1



PS501-2



PS501-3



PS501-4

Micro-Adjustable Torque Screwdriver

An excellent tool for flexible production. This driver allows instant changes to the torque value with the easy-to-read window scale and a precise pull-to-set, push-to-lock adjustment knob. The Micro-Adjustable series includes three models ranging from 10 to 450 Ncm or 20 in. ozs. to 40 in. lbs.



Adjusting the screwdriver is simple. Just pull the adjusting knob to unlock, then turn it to the desired torque while keeping an eye on the major window scale and the minor knob scale. When the correct setting is reached push in the knob until it clicks. And it's ready to use!

Non-magnetic spring-loaded bit holder to avoid damaging sensitive equipment or components

Cam-over torque limiting clutch for repeatability and accuracy

Lightweight yet rugged construction, built to last

Permanently lubricated internal mechanism, never needs oil

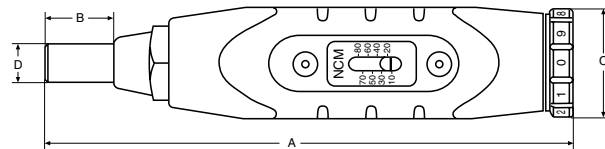


Stainless steel 1/4" Hex receiver allows use of all standard drive bits (Phillips, Torx, etc.)

Certified to the following industry specifications: ASME B107.14 M-1994 and ISO 6789, EN 26789/1994

Comfortable shape and non-slip grip prevent friction injuries

Easy-to-read window scale and adjustment knob for precise settings



Assortment

Product code	EAN-code +731415	Torque capacity**		A		B		C		D		in.	g	in.
		Ncm	in. ozs./in. lbs	mm	in.	mm	in.	mm	in.	mm	in.			
MA500-1	112395	10-80		138	5.43	18.2	0.72	28	1.10	9.6	0.38	1/4	195	1
MA500-2	112401	40-200		157	6.18	18.2	0.72	28	1.10	9.6	0.38	1/4	260	1
MA500-3	112418	50-450		171	6.73	18.2	0.72	32	1.26	9.6	0.38	1/4	306	1
MAL500-1*	112593		20-100 in. ozs.	138	5.43	18.2	0.72	28	1.10	9.6	0.38	1/4	195	1
MAL500-2*	112609		3-15 in. lbs.	157	6.18	18.2	0.72	28	1.10	9.6	0.38	1/4	260	1
MAL500-3*	112616		5-40 in. lbs.	171	6.73	18.2	0.72	32	1.26	9.6	0.38	1/4	306	1

* Available in US only.

** Store driver in protective case at lowest torque setting. Do not force adjusting knob below lowest setting.

Preset Torque Screwdriver

The perfect choice for multiple production uses, this driver is rugged and precise. The Preset series consists of four models and covers a torque range of 4 to 450 Ncm or 6 in. ozs. to 40 in. lbs.



The end cap removes for access to the 1/8" Hex adjustment screw (Hex key included with each driver). Then use a certified torque tester to verify the exact torque value after adjustment. Replace the end cap and it's ready to go!

Stainless steel 1/4" Hex receiver allows use of all standard drive bits (Phillips, Torx, etc.)

Cam-over torque limiting clutch for repeatability and accuracy

Comfortable shape and non-slip grip prevent friction injuries

Permanently lubricated internal mechanism, never needs oil

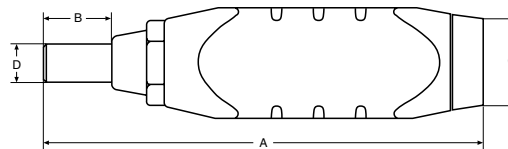


Non-magnetic spring-loaded bit holder to avoid damaging sensitive equipment or components

Lightweight yet rugged construction, built to last

Certified to the following industry specifications:
ASME B107.14 M-1994 and
ISO 6789, EN 26789/1994

Precise adjustment screw makes setting torque easy



Assortment

Product code	EAN-code +731415	Torque capacity		A		B		C		D		in.	g	in.
		Ncm	in. ozs./in. lbs	mm	in.	mm	in.	mm	in.	mm	in.			
PS501-1	0112425	4-22	6-32 in. ozs.	115	4.53	18.2	0.72	28	1.10	9.6	0.38	1/4	147	1
PS501-2	0112432	7-70	10-100 in. ozs.	141	5.55	18.2	0.72	28	1.10	9.6	0.38	1/4	187	1
PS501-3	0112449	15-170	1.5-15 in. lbs.	141	5.55	18.2	0.72	28	1.10	9.6	0.38	1/4	198	1
PS501-4	0112456	45-450	4-40 in. lbs.	154	6.06	18.2	0.72	32	1.26	9.6	0.38	1/4	270	1



Lindstrom develops, produces and markets cutters, pliers and other precision tools like tweezers and ergonomic screwdrivers.

Lindstrom has developed and produced high-precision tools since 1856, making us the oldest continuous producer of handtools in existence today.

Lindstrom, a Business Unit within the Bahco Group, markets its products through the world-wide Bahco sales unit organization.

Lindstrom Precision Tools

Advanced tools for precision electronic assembly, rework and repair.



X-ON Electronics

Largest Supplier of Electrical and Electronic Components

Click to view similar products for [lindstrom](#) manufacturer:

Other Similar products are found below :

[TL 2A-SA SL](#) [9854](#) [8130](#) [RX 7892](#) [9856](#) [9857](#) [9859](#) [TL-5A-SA](#) [TL 0-SA](#) [TL 00-SA-ET](#) [TL 1-SA](#) [TL 2-SA](#) [TL 2A-SA-SL](#) [TL 3C-TA](#) [TL 5-TA](#) [TL 5B-SA](#) [PS501-1](#) [PS501-3](#) [PS501-4](#) [9858](#) [TL SM108-SA](#) [RX8162](#) [8146](#) [TL 0C9-SA](#) [TL 2AB-SA](#) [TL 3-SA](#) [TL 3-SA-ET](#) [TL 3-SA-SL](#) [TL 65A-SA](#) [TL 7-SA](#) [TL 7A-SA](#) [TL SM 109-SA](#) [TL SM 117-SA](#) [TL 124-SA](#) [TL 475-SA](#) [TL 649-SA](#) [TL 7CFR-SA](#) [TL SM 104-SA](#) [TL SM115-SA](#) [RX8161](#) [RX 7890](#) [TL 00D-SA](#) [TL 15AP](#) [TL 2-SA-SL](#) [TL 2AX-SA](#) [TL 5-SA](#) [TL SS-SA](#) [TL SM 107-SA](#) [TL SM 110-SA](#) [TL 00CFR-SA](#)