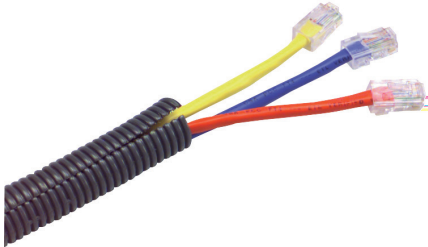


Split Loom

Polyethylene, Black



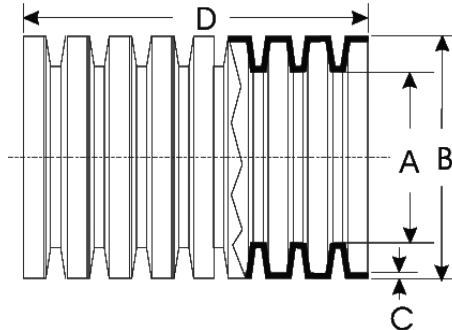
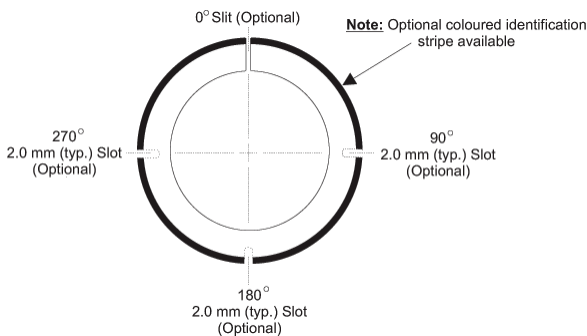
Description:

Flexible convoluted tubing / conduit manufactured from a blend of low density polyethylene and linear low density polyethylene resins.

Characteristics:

Flexibility : Excellent
 Abrasion Resistance : Good
 Chemical Resistance : Good
 Operating Temperature : -40°C to +93°C (-40°F to 200°F)

| Typical Physical Properties | Test Method | Value | Units |
|-----------------------------|-------------|-------|-------|
| Specific Gravity/Density | ASTM D792 | 0.924 | - |



Product Dimensions:

| Part Number | Nominal ID Diameter | Dia. Code | Dimension "A" I.D. | | Dimension "B" O.D. | | Dim. "C" Wall Min. |
|-------------|---------------------|-----------|--------------------|---------------|--------------------|---------------|--------------------|
| | | | Min. | Max. | Min. | Max. | |
| 1435 | 1/4" (7mm) | 07L | 6.5 (0.256) | 7.01 (0.276) | 9.47 (0.373) | 10.11 (0.398) | 0.11 (0.004) |
| 1436 | 3/8" (9mm) | 09L | 9.35 (0.368) | 10.11 (0.398) | 12.56 (0.494) | 13.32 (0.525) | 0.12 (0.005) |
| 1437 | 1/2" (13mm) | 012 | 12.01 (0.473) | 13.11 (0.516) | 16.87 (0.664) | 17.78 (0.7) | 0.12 (0.005) |
| 1438 | 5/8" (16mm) | 16L | 15.11 (0.595) | 16.08 (0.633) | 18.59 (0.732) | 19.56 (0.77) | 0.12 (0.005) |
| 1439 | 3/4" (19mm) | 19L | 18.97 (0.747) | 19.86 (0.782) | 23.1 (0.909) | 23.86 (0.939) | 0.12 (0.005) |
| 1440 | 1" (23mm) | 23L | 22.78 (0.897) | 24.1 (0.949) | 27.36 (1.077) | 28.17 (1.109) | 0.15 (0.006) |

Dimensions : Millimetres (Inches)

Split Loom

Polyethylene, Black



Note:

- (A) Product tolerances are general and are designed to encompass all available materials. Tighter tolerances may be available for a specific material.
- (B) Product with an I.D.>1.5" will not meet the std. Cut length tolerances listed above. Special cut length tolerance will be given on a case to case basis.

| Dimension "D" Cut-To-Length Specifications | |
|--|---|
| Less than or equal to 400mm +/- 10mm | Greater than 400mm +/- 2.5% of target length |

Part Number Table

| Description | Part Number |
|---|-------------|
| 1/4" Black Polyethylene Split Loom - 100' Spool | 1435 |
| 3/8" Black Polyethylene Split Loom - 100' Spool | 1436 |
| 1/2" Black Polyethylene Split Loom - 100' Spool | 1437 |
| 5/8" Black Polyethylene Split Loom - 50' Spool | 1438 |
| 3/4" Black Polyethylene Split Loom - 50' Spool | 1439 |
| 1" Black Polyethylene Split Loom - 50' Spool | 1440 |

Important Notice : This data sheet and its contents (the "Information") belong to the members of the Premier Farnell group of companies (the "Group") or are licensed to it. No licence is granted for the use of it other than for information purposes in connection with the products to which it relates. No licence of any intellectual property rights is granted. The Information is subject to change without notice and replaces all data sheets previously supplied. The Information supplied is believed to be accurate but the Group assumes no responsibility for its accuracy or completeness, any error in or omission from it or for any use made of it. Users of this data sheet should check for themselves the Information and the suitability of the products for their purpose and not make any assumptions based on information included or omitted. Liability for loss or damage resulting from any reliance on the Information or use of it (including liability resulting from negligence or where the Group was aware of the possibility of such loss or damage arising) is excluded. This will not operate to limit or restrict the Group's liability for death or personal injury resulting from its negligence. pro-POWER is the registered trademark of the Group. © Premier Farnell plc 2012.



X-ON Electronics

Authorized Distributor

Click to view similar products for [Adafruit Accessories](#) category.

Click to view products by [Pro Power](#) manufacturer.

Other Similar products are found below :

[1202](#) [1818](#) [2261](#) [2447](#) [247](#) [1449](#) [1105](#) [1297](#) [1493533521REVA](#) [JT07RE1419S386](#)
[7716794REVE](#) [181063116](#) [WS10401250](#) [465](#) [3182](#) [182](#) [1999](#) [455](#) [1026](#) [2242](#) [482](#) [2037](#)
[2996](#) [3153](#) [2278](#)