

Interface module - VIP-3/PT/D37SUB/F/LED - 2904266

Please be informed that the data shown in this PDF Document is generated from our Online Catalog. Please find the complete data in the user's documentation. Our General Terms of Use for Downloads are valid (<http://phoenixcontact.com/download>)



VARIOFACE module, with push-in connections and D-SUB socket strip, for mounting on NS 35 rails, with LED, 37-pos.

The figure shows the 37-pos. version with D-SUB plug.



Key Commercial Data

| | |
|--------------------------------------|---------------|
| Packing unit | 1 pc |
| Weight per Piece (excluding packing) | 202.9 g |
| Custom tariff number | 85369010 |
| Country of origin | United States |

Technical data

Dimensions

| | |
|--------|---------|
| Width | 72.3 mm |
| Height | 75.8 mm |
| Depth | 63 mm |

Ambient conditions

| | |
|---|------------------|
| Ambient temperature (operation) | -20 °C ... 50 °C |
| Ambient temperature (storage/transport) | -20 °C ... 70 °C |

General

| | |
|---------------------------------|--------------|
| Max. perm. operating voltage | 24 V DC |
| Max. perm. current (per branch) | 2 A |
| Number of positions | 37 |
| Status display | LED |
| Mounting position | any |
| Standards/regulations | IEC 60664 |
| | DIN EN 50178 |

Interface module - VIP-3/PT/D37SUB/F/LED - 2904266

Technical data

General

| | |
|----------------------|-----------|
| | IEC 62103 |
| Rated surge voltage | 1.2 kV |
| Degree of pollution | 2 |
| Overvoltage category | II |

Connection data for connection 1

| | |
|----------------------------------|--|
| Connection name | Field level |
| Connection method | Push-in connection |
| Stripping length | 8 mm |
| Conductor cross section solid | 0.14 mm ² ... 2.5 mm ² |
| Conductor cross section flexible | 0.14 mm ² ... 2.5 mm ² |
| Conductor cross section AWG | 26 ... 14 |

Connection data for connection 2

| | |
|-----------------------|--------------------|
| Connection name | Controller level |
| Connection method | D-SUB socket strip |
| Number of connections | 1 |
| Number of positions | 37 |

Standards and Regulations

| | |
|----------------------------------|--------------|
| Connection in acc. with standard | CSA |
| Standards/regulations | IEC 60664 |
| | DIN EN 50178 |
| | IEC 62103 |
| Degree of pollution | 2 |
| Overvoltage category | II |

Classifications

eCl@ss

| | |
|------------|----------|
| eCl@ss 4.0 | 27250313 |
| eCl@ss 4.1 | 27250313 |
| eCl@ss 5.0 | 27250313 |
| eCl@ss 5.1 | 27250313 |
| eCl@ss 6.0 | 27242608 |
| eCl@ss 7.0 | 27141152 |
| eCl@ss 8.0 | 27141152 |

Interface module - VIP-3/PT/D37SUB/F/LED - 2904266

Classifications

ETIM

| | |
|----------|----------|
| ETIM 3.0 | EC001604 |
| ETIM 4.0 | EC001604 |
| ETIM 5.0 | EC002780 |

UNSPSC

| | |
|---------------|----------|
| UNSPSC 6.01 | 30211824 |
| UNSPSC 7.0901 | 39121421 |
| UNSPSC 11 | 39121421 |
| UNSPSC 12.01 | 39121421 |
| UNSPSC 13.2 | 39121421 |

Approvals

Approvals


Approvals

CSA / UL Recognized / cUL Recognized / EAC / EAC / cULus Recognized

Ex Approvals

Approvals submitted

Approval details

| | |
|---|-------|
| CSA  | |
| mm ² /AWG/kcmil | 26-14 |
| Nominal current I _N | 2 A |
| Nominal voltage U _N | 24 V |

Interface module - VIP-3/PT/D37SUB/F/LED - 2904266

Approvals

| | |
|--------------------------------|-------|
| UL Recognized | |
| mm ² /AWG/kcmil | 26-14 |
| Nominal current I _N | 2 A |
| Nominal voltage U _N | 24 V |

| | |
|--------------------------------|-------|
| cUL Recognized | |
| mm ² /AWG/kcmil | 26-14 |
| Nominal current I _N | 2 A |
| Nominal voltage U _N | 24 V |

| |
|-----|
| EAC |
|-----|

| |
|-----|
| EAC |
|-----|

| |
|------------------|
| cULus Recognized |
|------------------|

Accessories

Accessories

System cable

Cable - CABLE-D37SUB/B/S/ 50/KONFEK/S - 2302191



Round shielded cable set, with 37-pos. D-SUB female and male connectors, cable length: 0.5 m

Interface module - VIP-3/PT/D37SUB/F/LED - 2904266

Accessories

Cable - CABLE-D37SUB/B/S/100/KONFEK/S - 2302201



Round shielded cable set, with 37-pos. D-SUB female and male connectors, cable length: 1 m

Cable - CABLE-D37SUB/B/S/150/KONFEK/S - 2302214



Round shielded cable set, with 37-pos. D-SUB female and male connectors, cable length: 1.5 m

Cable - CABLE-D37SUB/B/S/200/KONFEK/S - 2302227



Round shielded cable set, with 37-pos. D-SUB female and male connectors, cable length: 2 m

Cable - CABLE-D37SUB/B/S/300/KONFEK/S - 2302230



Round shielded cable set, with 37-pos. D-SUB female and male connectors, cable length: 3 m

Cable - CABLE-D37SUB/B/S/400/KONFEK/S - 2302243



Round shielded cable set, with 37-pos. D-SUB female and male connectors, cable length: 4 m

Interface module - VIP-3/PT/D37SUB/F/LED - 2904266

Accessories

Cable - CABLE-D37SUB/B/S/600/KONFEK/S - 2302256



Round shielded cable set, with 37-pos. D-SUB female and male connectors, cable length: 6 m

Cable - CABLE D-SUB-S/.../.../... - 2302340



Shielded round cable, assembled with one D-SUB male and one female connector, variable cable length

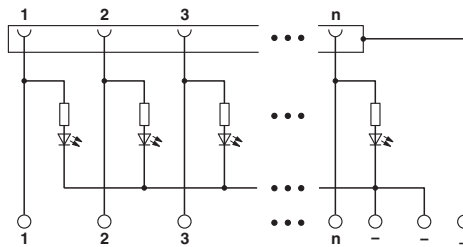
Cable - CABLE D-SUB-S-S-S/.../.../... - 2302434



Shielded round cable, assembled with two D-SUB male connectors, variable cable length

Drawings

Circuit diagram



X-ON Electronics

Largest Supplier of Electrical and Electronic Components

Click to view similar products for [Terminal Block Interface Modules](#) category:

Click to view products by [Phoenix Contact](#) manufacturer:

Other Similar products are found below :

[73-551-6002I](#) [GCN1MX25B](#) [11S](#) [DIN-50P-01](#) [DIN-68H-01](#) [DIN-96DI-01](#) [2291901](#) [2900185](#) [2903392](#) [2907794](#) [2M10FCL](#) [2281759](#)
[2906249](#) [2907808](#) [TB ML 3P ST D5.08](#) [5604442](#) [XW2B-40G5-T](#) [5606629](#) [XW2B-20G5-D](#) [2903870](#) [5541988](#) [5541962](#) [1776613-1](#) [XW2B-](#)
[34G4](#) [XW2B-60G5](#) [XW2R-E34G-C1](#) [XW2R-E34G-C3](#) [XW2R-J40G-T](#) [XW2R-P34G-C4](#) [XW2B-50G5](#) [XW2R-E40G-T](#) [XW2R-E34G-C2](#)
[XW2R-J34G-C2](#) [ADAM-3920R-AE](#) [060-6827-06](#) [2311030](#) [2287708](#) [XW2C-20G6-IO16](#) [XW2R-J20G-T](#) [XW2B-60G4](#) [GCN1-T](#)
[00111550102](#) [2908853](#) [2908851](#) [2908852](#) [2908850](#) [1033201](#) [5541234](#) [410-261](#) [5521322](#)