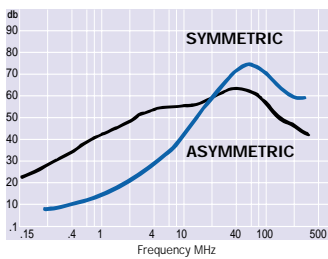
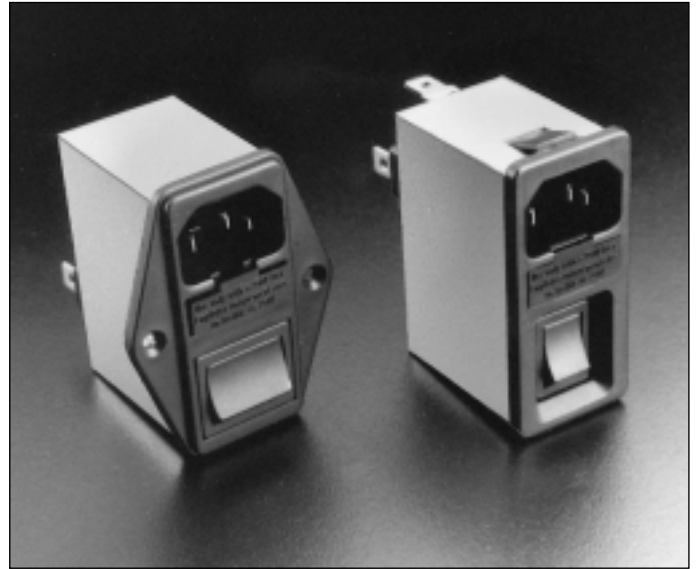
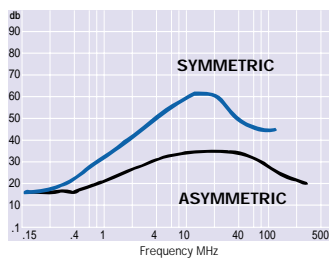


2 & 6 AMP STANDARD & SURGE P



2 & 6 AMP MEDICAL VERSION



SF 2030 SF 2032	Rated Current A	Leakage Current @ 250V 50Hz	Inductance mH	Connections Input Output	Resistor Value MΩ	Number of Fuses	Mounting	Approvals UL IEC CE
Standard Version								
SF 2030-2/01	2	0.2mA	2.0	IEC 320 6.3 x 0.8 Faston	1	1	Snap-in	■ ■ ■
SF 2032-2/01	2	0.2mA	2.0	IEC 320 6.3 x 0.8 Faston	1	2	Screw Mount	■ ■ ■
SF 2030-6/01	6	0.2mA	0.5	IEC 320 6.3 x 0.8 Faston	1	1	Snap-in	■ ■ ■
SF 2032-6/01	6	0.2mA	0.5	IEC 320 6.3 x 0.8 Faston	1	2	Screw Mount	■ ■ ■
Medical Version								
SF 2030M-2/01	2	5μA	2.0	IEC 320 6.3 x 0.8 Faston	1	1	Snap-in	■ ■ ■
SF 2032M-2/01	2	5μA	2.0	IEC 320 6.3 x 0.8 Faston	1	2	Screw Mount	■ ■ ■
SF 2030M-6/01	6	5μA	0.5	IEC 320 6.3 x 0.8 Faston	1	1	Snap-in	■ ■ ■
SF 2032M-6/01	6	5μA	0.5	IEC 320 6.3 x 0.8 Faston	1	2	Screw Mount	■ ■ ■
Surge Protected Version (IEC 950 not applicable)								
SF 2030Z-2/01	2	0.2mA	2.0	IEC 320 6.3 x 0.8 Faston	1	1	Snap-in	■ ■ ■
SF 2032Z-2/01	2	0.2mA	2.0	IEC 320 6.3 x 0.8 Faston	1	2	Screw Mount	■ ■ ■
SF 2030Z-6/01	6	0.2mA	0.5	IEC 320 6.3 x 0.8 Faston	1	1	Snap-in	■ ■ ■
SF 2032Z-6/01	6	0.2mA	0.5	IEC 320 6.3 x 0.8 Faston	1	2	Screw Mount	■ ■ ■

Temperature Range: -25°C to +85°C
Operating Voltage: 250Vac
Operating Frequency: 0 to 400Hz
Test Voltage: L+N to ground, 2700Vdc, 2 seconds

Varistor
 Zinc oxide type; energy absorption 21 Joules (current impulse defined in IEC 60-2 Section 6). Varistor voltage: 430Vdc(measured at 1mA); clamping voltage 710V at 10A

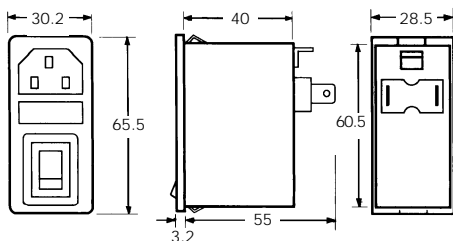
■ Approved
 □ Submitted for Approval

IEC 950 (EN 60950) Applications)
 Twin fused version only

DIMENSIONS

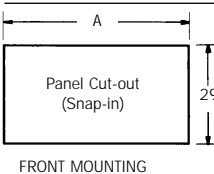
All dimensions are nominal and in mm

SF 2030 (Single Fuseholder Snap-in)

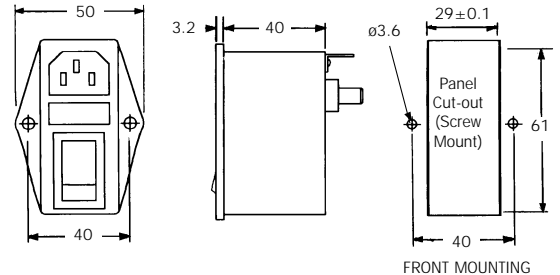


Panel Cut-out Details

Panel Thickness	Dim A
1.2 to 1.5	61
2.0 to 2.5	61.5

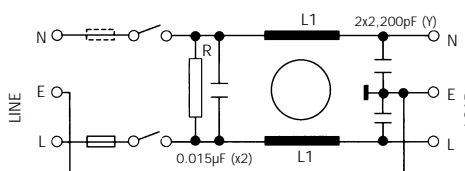


SF 2032 (Double Fuseholder Screw Mount)

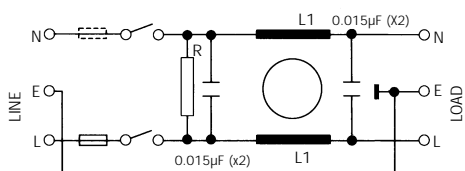


CIRCUIT DIAGRAMS

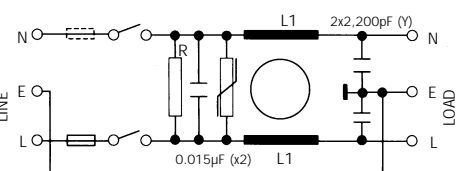
Standard Version



Medical Version (Suffix 'M')



Surge Protected Version (Suffix 'Z')



X-ON Electronics

Largest Supplier of Electrical and Electronic Components

Click to view similar products for [belling lee manufacturer](#):

Other Similar products are found below :

[123984R](#) [003846CM](#) [124104AM](#) [L1744A](#) [L2006A](#) [124054X](#) [124064G](#) [REF-H](#) [L2143/6/L](#) [L1349/FP](#) [L1350/NI](#) [L1904C/8/CS](#) [L1790A](#)
[L693/3](#) [L754/2](#) [003722EM](#) [124102EM](#) [L1792A](#) [REF-02](#) [SF2032-6/01](#) [L1317/BLACK](#) [L1382/H](#) [L2225](#) [L1318/BLACK](#) [L309/1/RED](#)
[L1904C/6/CS](#) [L1904A/6/FP](#) [Y9236](#) [L1904A/8/FS](#) [L1904A/8/FP](#) [L1904C/7/PCR](#) [L2224](#) [L1904C/4/CS](#) [L2180](#) [L1568/1/RED](#) [L1639B/NI](#)
[REF-06](#) [REF-11](#) [REF-F](#) [L1001/1/BLACK](#) [L1436A/P](#) [L1436B/S](#) [L1465/RPCS](#) [L1793A](#) [L1850/1/GREEN](#) [L1850/1/RED](#) [L1896A/GREEN](#)
[L1896A/RED](#) [L1904A/5A/FP](#) [L1904A/5/FP](#)