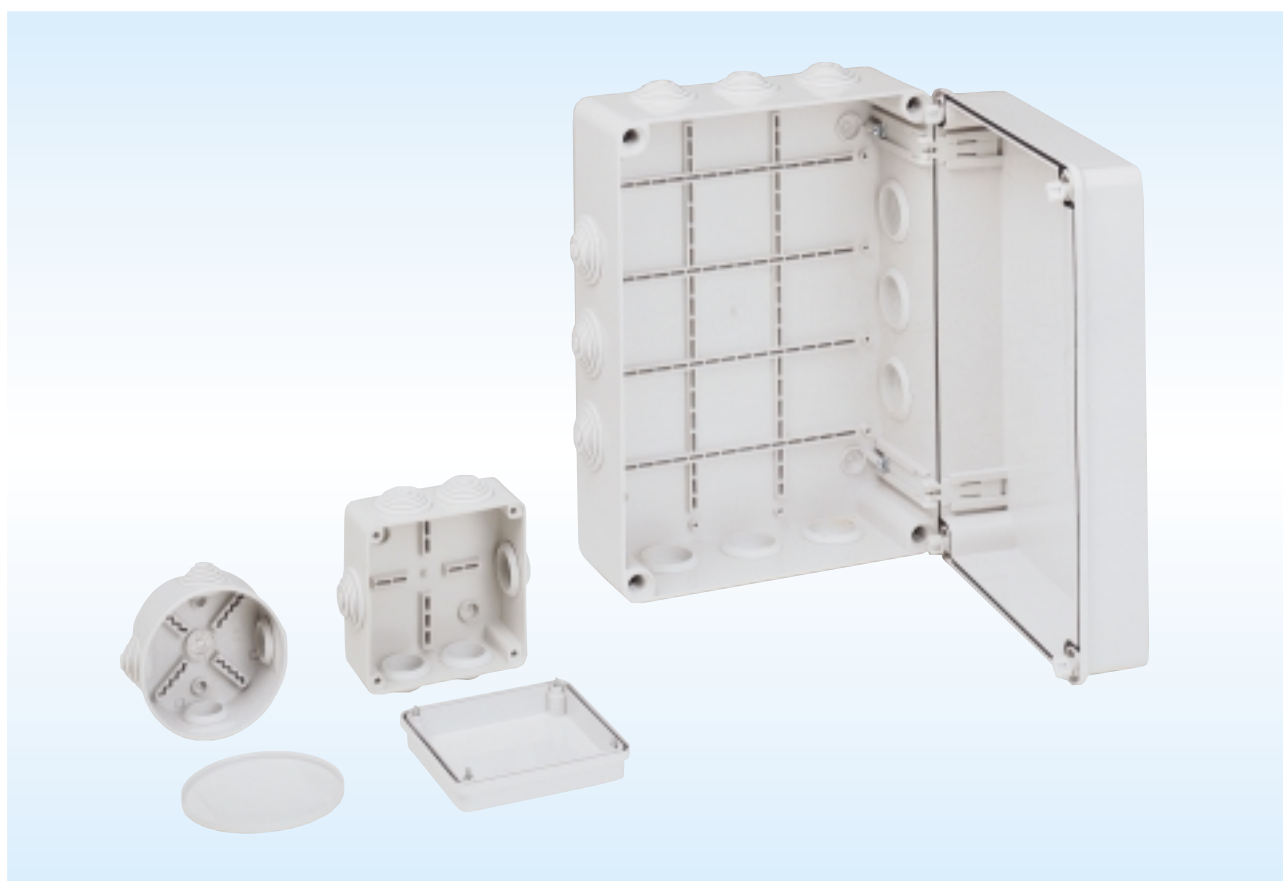


Insulated boxes consisting of base and lid made of light RAL 7035 made of ABS. Unaffected by outdoor conditions. Conform to the standard CEI 998.1 and 998.2-5.

- self-extinguishing (750°C), double insulation, high impact resistance.
- DP... series consist of 3 basic models:
- DPC... series provided with membrane gland for cable and tubes entries.
- DPN... series with plain sides.
- DP... T with plain sides and transparent lids made of polycarbonate.

- wide dimensional range up to 10 models from Ø 66 mm to 400 × 300 mm.
- all bases fit grooves for fixing of equipment through self-tapping screws.
- pushed in covers (without screws) up to model 100 × 100 (IP44). For larger models quick and reliable fixing through metal or plastic screws and sealing between base and lid (IP55).
- central screw (TAD) allowing a reliable one point fixing system without drilling the back up to reference DP...8/8.

- bases prepared for direct fixation to the wall. The caps supplied with the box will keep the watertightness and double insulation.
- safety screws and lids for references as from 100 × 100.
- internal hinges for models 30/22 and 40/30.
- optional metal mounting plate.
- insulation tension AC: 400V.



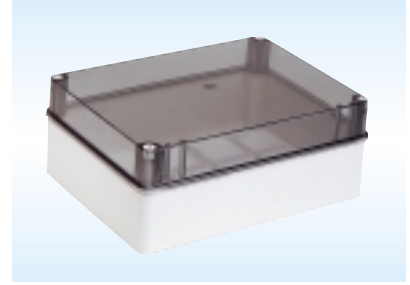
Dimensions (in mm)			product reference with glands	number of glands and dimension of membrane glands	plain side product reference	transparent lid product reference	mounting plate product reference	type of closing	weight gr.
width	height	depth							
-	Ø 70	46	DPC - 65	4 × Ø max.20 mm	-	-	-	Pressure	50
-	Ø 85	60	DPC - 80	4 × Ø max.20 mm	-	-	-	Pressure	65
83	83	50	DPC - 8/8	6 × Ø max.20 mm	-	-	-	Pressure	80
103	103	56	DPC - 10/10	6 × Ø max.25 mm	DPN-10/10	-	-	4 metal screws	160
123	83	78	DPC - 12/8	10 × Ø max.25 mm	DPN-12/8	-	-	4 metal screws	160
152	114	76	DPC - 15/10	10 × Ø max.25 mm	DPN-15/10	DP-15/10T	PMDP-1510	4 metal screws	280
194	144	78	DPC - 20/15	10 × Ø max.25 mm	DPN-20/15	DP-20/15T	PMDP-2015	4 metal screws	433
244	194	96	DPC - 25/20	12 × Ø max.32 mm	DPN-25/20	DP-25/20T	PMDP-2520	4 metal screws	760
306	226	127	DPC - 30/22	12 × Ø max.32 mm	DPN-30/22	DP-30/22T	PMDP-3022	4 plastic screws	1160
389	310	128	DPC - 40/30	12 × Ø max.45 mm	DPN-40/30	-	PMDP-4030	4 plastic screws	1650



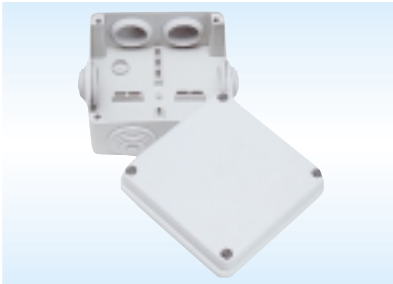
Insulated boxes provided with membrane gland, references DPC...



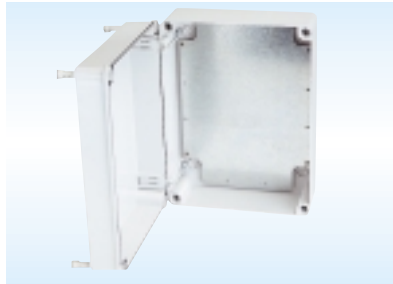
Insulated boxes without membrane gland, references DPN...



Transparent lid for references DP..T made of polycarbonate.



Safety lids and screws as from model 100 x 100.



Metal mounting plates to be fitted directly into the boxes by means of self-tapping screws.



Hinges included in the standard supply ready to be fitted directly into the boxes by means of self-tapping screws for the references DP..30/22 and DP..40/30.



All bases fit grooves for fixing of equipment through self-tapping screws.



Fixation through central screw for references up to 80 x 80: practical quick system screw and bung, allowing a reliable one-point fixing without drilling the back. The central transparent nut eases the centring and fixing of the box.

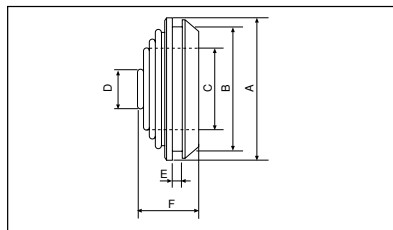


The shape of the back ensures a good grip to the wall. Indication of centres when fixing through internal screws.

Adjustable membrane glands

Insulating membrane glands made of P.V.C. with adjustable tight entry for cables or tubes.

To fit to DP... plastic junction boxes.



product reference	ØA	ØB	ØC	ØD	E	F	Ø max. tube
ECDPC 1	28	24	20,8	8,8	2,3	15,4	20
ECDPC 2	35	28	24,7	8,8	2,3	15,4	25
ECDPC 3	43,6	38	33,1	8,9	3,2	18,4	32
ECDPC 4	56,5	47	45,6	24,3	3,4	18,4	45

Wall fixing bung

■ for fixation through central screw of references up to 100 × 100.

■ suitable for any kind of wall, thanks to expandable bung

- brick

- concrete

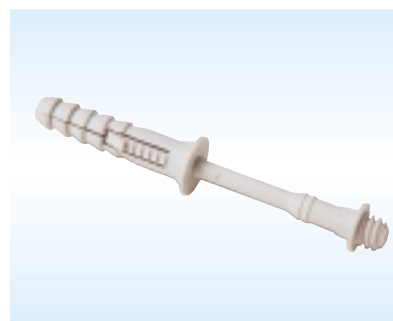
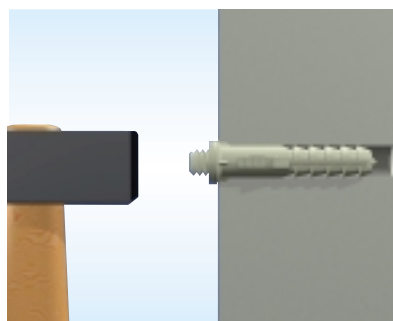
- hollow surfaces.

■ colour RAL-7035.

■ drill diameter: 8 mm.

■ thread diameter: 7 × 1,5 mm

Product reference: **TAD**



X-ON Electronics

Largest Supplier of Electrical and Electronic Components

Click to view similar products for [Schneider manufacturer](#):

Other Similar products are found below :

[HMIGTO2310](#) [GS1AE21](#) [METSEPM8240](#) [LC1DT25B7](#) [LU9M1](#) [7D](#) [7S](#) [7XA1](#) [8501RS44V24](#) [8501RSD14P14V51](#) [8501XM4](#)
[8501XO20V03Y414](#) [9001KXRK](#) [9001SKR9P35RH25](#) [9001SKT35L31](#) [9003K2C003GA](#) [9007AA1](#) [9007BA1](#) [9007C54D](#) [9007C62A2](#)
[9007C68T5](#) [9007CA11](#) [9007FA3](#) [9007HA4](#) [9007HA6](#) [9007KA1](#) [9007KB11](#) [9007MS01S0206](#) [9007MS10S0100](#) [9012GAR4](#) [9012GAW2](#)
[9012GBW1](#) [9012GDW5E3](#) [9012GFW1](#) [9012GNG1](#) [9012GNG3](#) [9012GNG6](#) [9013FHG39J69](#) [9013GHG2J30](#) [9050JCK2F30V14](#) [GZ1E02](#)
[A9F07125](#) [ATS01N222RT](#) [ATV12H018F1](#) [RSL1PRJU](#) [9001KA35](#) [9001KA3G](#) [9001KR1GH5](#) [9001KXSDC](#) [9007C52A2](#)