

PUSHBUTTONS NON-ILLUMINATED 15.2 mm, 250 V / 0.7 A

Technical Data

→ General information

Form of lens	protruding lens
Color of lens	see order block
Form of collar	round

→ Dimensions

Diameter of collar	19 mm
Overall height	8.2 mm
Mounting depth	21.5 mm
Mounting hole	15.2 mm

→ Mechanical design

Mounting	ring nut
Terminals	see order block
Contact system	bridge contact
Contact function	momentary
Contact arrangement	see order block
Contact materials	Ag
Illumination	no
Lamp socket	no

→ Mechanical characteristics

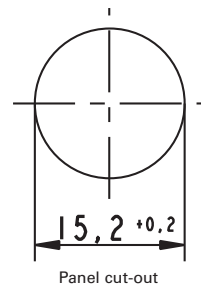
Operating force max.	7.5 N
Operating travel	3 mm
Switching travel NC	1.2 mm
Switching travel NO	2.0 mm
Robustness max.	100 N

→ Electrical characteristics

Rated voltage AC max.	250 V
Rated current max.	0.7 A
Contact resistance when new max.	50 mΩ
Contact resistance acc. to life max.	300 mΩ

→ Other specifications

Operating life (operations)	25,000
Degree of protection from front side	IP40 acc. to DIN EN 60529 (IP65 with sealing cap)
Operation temperature min.	-25 °C
Ambient temp. operating max.	+85 °C
Storage temperature min.	-40 °C
Storage temperature max.	+90 °C
Environmental resistance	acc. to IEC 60068-2-14, -30, -33 and -78
Weight	7 g
Flame class acc. to UL 94	V 0
Hot wire ignition acc. to IEC 60695-2-1	yes
ROHS compliant	yes
REACH compliant	yes



Approvals



ENEC 25T85

PUSHBUTTONS

PUSHBUTTONS NON-ILLUMINATED - MOUNTING HOLE DIAMETER 15.2 MM

1

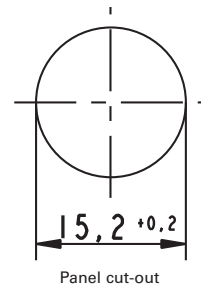
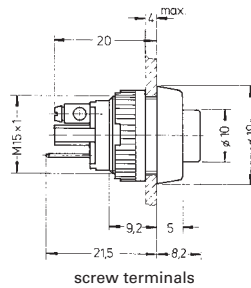
Accessories Pushbutton non-illuminated - 15.2 mm, 250 V / 0.7 A

→ Description	Photo	Order no.	Additional accessories see page
Sealing cap, transparent, for protection acc. to IP65		5.52.008.115/0000	-
Fixing spanner M 15, M 16		5.58.002.019/0105	5 - 25



Pushbutton non-illuminated mounting hole diameter 15.2 mm

Technical data see page 1 - 79



Other Pushb.

→ Contact arrangement	Contact function	Color of lens	Terminals	Order no.
1 NO	momentary	opaque red	screw terminals	1.10.001.001/0301
1 NO	momentary	opaque red	solder/quick connector 6.3x0.8 / 2x 2.8x0.8mm	1.10.001.011/0301
1 NO	momentary	opaque green	screw terminals	1.10.001.001/0507
1 NO	momentary	opaque green	solder/quick connector 6.3x0.8 / 2x 2.8x0.8mm	1.10.001.011/0507
1 NO	momentary	opaque white	screw terminals	1.10.001.001/0205
1 NO	momentary	opaque white	solder/quick connector 6.3x0.8 / 2x 2.8x0.8mm	1.10.001.011/0205
1 NO	momentary	opaque black	screw terminals	1.10.001.001/0104
1 NO	momentary	opaque black	solder/quick connector 6.3x0.8 / 2x 2.8x0.8mm	1.10.001.011/0104
1 NC	momentary	opaque red	screw terminals	1.10.001.151/0301
1 NC	momentary	opaque red	solder/quick connector 6.3x0.8 / 2x 2.8x0.8mm	1.10.001.161/0301
1 NC	momentary	opaque black	screw terminals	1.10.001.151/0104
1 NC	momentary	opaque black	solder/quick connector 6.3x0.8 / 2x 2.8x0.8mm	1.10.001.161/0104

Quick-connector 6.3 x 0.8 mm. The connector is splitted and also usable for two connectors 2.8 x 0.8 mm.

X-ON Electronics

Largest Supplier of Electrical and Electronic Components

Click to view similar products for [rafi](#) manufacturer:

Other Similar products are found below :

[5.00.070.074/0000](#) [1.15.114.936/0000](#) [1.15.108.152/0000](#) [1.30.279.021/0700](#) [1.74.510.011/2500](#) [1.10.119.967/0000](#) [1.69.508.113/1002](#)
[1.20.126.604/0000](#) [1.30.276.601/0000](#) [1.10.011.001/0551](#) [5.00.888.506/1500](#) [1.02.157.201/1300](#) [3.13.026.001/0000](#) [1.30.285.221/0100](#)
[1.30.270.021/2300](#) [1.20.124.018/0000](#) [1.66.003.081/1400](#) [1.30.241.001/2207](#) [5.76.204.114/0400](#) [5.73.110.000/0000](#) [1.90.690.351/0000](#)
[1.30.295.222/0000](#) [1.30.285.101/0100](#) [1.30.280.001/2201](#) [1.30.275.221/0800](#) [1.30.273.602/0300](#) [1.30.242.026/2207](#) [1.30.073.601/2000](#)
[1.20.123.035/0000](#) [1.10.010.001/0221](#) [1.10.099.201/0011](#) [5.70.090.016/1001](#) [5.70.090.011/1001](#) [5.70.090.015/1001](#) [1.20.126.303/9000](#)
[5.05.511.747/1500](#) [1.90.692.001/0000](#) [1.01.102.001/0104](#) [5.05.510.935/0000](#) [3.14.002.052/0000](#) [1.30.275.321/0100](#) [5.05.511.476/2200](#)
[1.30.299.021/0700](#) [1.15.108.632/0100](#) [1.15.156.011/0000](#) [1.65.111.051/0000](#) [5.00.100.105/0000](#) [5.00.070.078/0000](#) [1.30.142.114/0209](#)
[3.13.026.036/0000](#)