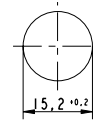


1

**Pushbutton, opaque, mounting hole diameter 15.2 mm, 250 V/0.7 A**



Pict.: Screw terminals, red

**Technical data**

**General information**

Form of lens protruding lens  
 Colour of lens see order block  
 Form of collar round

**Dimensions**

Diameter of collar 19 mm  
 Overall height 8.2 mm  
 Mounting depth 21.5 mm  
 Mounting hole 15.2 mm

**Mechanical design**

Mounting ring nut  
 Terminals see order block  
 Contact system bridge contact  
 Contact function momentary  
 Contact arrangement see order block  
 Contact materials Ag  
 Illuminability no  
 Lamp socket no

**Mechanical characteristics**

Operating force max. 7.5 N  
 Operating travel 3 mm  
 Switching travel NC 1.2 mm  
 Switching travel NO 2.0 mm  
 Robustness min. 100 N

**Electrical characteristics**

Rated voltage AC max. 250 V  
 Rated current max. 0.7 A  
 Contact resistance when new max. 50 mΩ  
 Contact resistance acc. to life max. 300 mΩ

**Other specifications**

Operating life 25000  
 Degree of protection from front side IP40 (IP65 with sealing cap)  
 Ambient temp. operating min. -25 °C  
 Ambient temp. operating max. +85 °C  
 Storage temperature min. -40 °C  
 Storage temperature max. +90 °C  
 Resistance to constant environment according to IEC 600 68-2-3 and 2-30  
 Resistance at variable environment according to IEC 600 68-2-14 and 2-33  
 Weight 7 g  
 Approvals ENEC T 85/55  
 Flame class acc. to UL 94 V 0  
 Hot wire ignition acc. to IEC 60695-2-1 yes

Other Pushb.

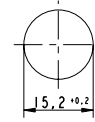
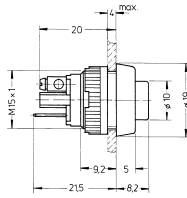
**Accessories Pushbutton, opaque, mounting hole diameter 15.2 mm, 250 V/0.7 A**

Description	Photo	Order no.	Page
Sealing cap, transparent (IP65)		<b>5.52.008.115/0000</b>	
Fixing spanner M 15, M 16		<b>5.58.002.019/0105</b>	5 - 23

## Pushbutton, opaque, mounting hole diameter 15.2 mm



Pict.: Screw terminals, red



Contact arrangement	Contact function	Illuminability	Terminals	Colour of lens	Order no.
1 NO	momentary	no	screw terminals	opaque black	<b>1.10.001.001/0104</b>
1 NO	momentary	no	screw terminals	opaque white	<b>1.10.001.001/0205</b>
1 NO	momentary	no	screw terminals	opaque red	<b>1.10.001.001/0301</b>
1 NO	momentary	no	screw terminals	opaque green	<b>1.10.001.001/0507</b>
1 NO	momentary	no	solder/quick connector 6.3x0.8 / 2x 2.8x0.8mm	opaque black	<b>1.10.001.011/0104</b>
1 NO	momentary	no	solder/quick connector 6.3x0.8 / 2x 2.8x0.8mm	opaque white	<b>1.10.001.011/0205</b>
1 NO	momentary	no	solder/quick connector 6.3x0.8 / 2x 2.8x0.8mm	opaque red	<b>1.10.001.011/0301</b>
1 NO	momentary	no	solder/quick connector 6.3x0.8 / 2x 2.8x0.8mm	opaque green	<b>1.10.001.011/0507</b>
1 NC	momentary	no	screw terminals	opaque black	1.10.001.151/0104
1 NC	momentary	no	screw terminals	opaque red	<b>1.10.001.151/0301</b>
1 NC	momentary	no	solder/quick connector 6.3x0.8 / 2x 2.8x0.8mm	opaque black	1.10.001.161/0104
1 NC	momentary	no	solder/quick connector 6.3x0.8 / 2x 2.8x0.8mm	opaque red	1.10.001.161/0301

Technical data see page 1 - 78

Quick-connector 6.3 x 0.8 mm. The connector is splitted and also usable for two connectors 2.8 x 0.8 mm.

1

Other Pushb.

## X-ON Electronics

Largest Supplier of Electrical and Electronic Components

*Click to view similar products for [Pushbutton Switches](#) category:*

*Click to view products by [Rafi](#) manufacturer:*

Other Similar products are found below :

[LW1L-M1C10V-A](#) [LW2L-A1C20M-GD](#) [LW2L-M1C20M-A](#) [60324L](#) [M7E-HRN2](#) [67021K512](#) [67081K512X](#) [701PB580](#) [719-5504-000](#)  
[MDPSSGLFS](#) [810KSV30B](#) [FLT 2U EE 01A](#) [MML21KA3ABK](#) [MML23KA3AC05K-001](#) [MML23KW3AA01W](#) [8418K2](#) [8646AB6X718UL](#)  
[8646ABUL](#) [FSDWH](#) [9001KXRK](#) [9001T8BK](#) [9533CD4+U574+U4922](#) [1203MRA](#) [A22EM01S](#) [A595](#) [1202A6](#) [12037A2ULCSA](#) [1203A2UL](#)  
[ABD122N-B](#) [1211390004](#) [ABN111-Y](#) [ABN400-R](#) [1211500044](#) [1211580012](#) [1212MRA](#) [1232A6NF](#) [RA3CSH6A](#) [1241.1183.7047](#)  
[1241.2511](#) [1241.3428](#) [1223A2ULCSA](#) [1223MRA](#) [1232AX2119](#) [1241.1183.8000](#) [1241.1183.8029](#) [1241.2506](#) [1241.2606](#) [12MA6](#)  
[1301940184](#) [RELBARF6X10\(PLASTIC\)](#)