

Test Jacks 4 mm System



Type

KUN 30 / KUN 30 Au

4mm Adapter, nickel/ gold plated brass with solder terminal max 2.5mm². Flexible, shatter-proof insulation sleeve

Pin Diameter

4 mm

PART NO. / Housing color

Nickel Plated	Gold Plated
● 931804100	● 931804700
● 931804101	● 931804701
● 931804102	● 931804702
● 931804103	● 931804703
● 931804104	● 931804704
○ 931804107 nickel	○ 931804707 gold



PB 4

4mm test jack, dimensions according to DIN41649. Suitable for testing PCB boards during operation.

4 mm

● 973582100
● 973582101

Technical Data

Contact Type	jack Ø 4 mm
Connection Type	solder terminal (max. 2.5mm ²)
Voltage Rating	30 VAC / 60 VDC
Measurement Category (IEC61010)	CAT I
Current Rating*	16 A
Contact Resistance	3 mOhm
Mounting Type	-

Material Specifications

Jack Body	nickel plated brass gold plated brass
Contact Spring	-
Housing	PVC-P

Environmental Conditions

Temperature Range	-25°C to +70 °C (-13 to 158°F)
-------------------	--------------------------------

Flamability Rating

Housing	-
---------	---

jack Ø 4 mm

Connection Type	solder
Voltage Rating	30 VAC / 60 VDC
Measurement Category (IEC61010)	CAT I
Current Rating*	16 A
Contact Resistance	5 mOhm
Mounting Type	PCB

tin plated brass

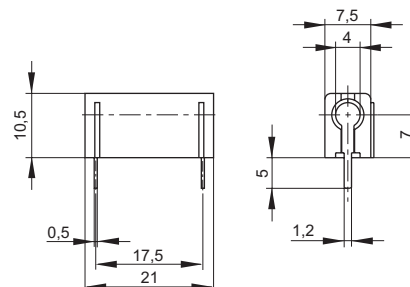
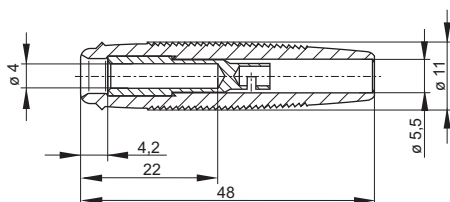
Contact Spring	-
Housing	PC

-25°C to +70 °C (-13 to 158°F)

UL 94 HB

Drawing

Measurements are shown in millimeters.
Multiply by 0.03937 to convert to inches.



* Please consider derating graph on page 80.

X-ON Electronics

Largest Supplier of Electrical and Electronic Components

Click to view similar products for [Test Plugs & Test Jacks](#) category:

Click to view products by [Hirschmann](#) manufacturer:

Other Similar products are found below :

[579-0400](#) [66000-7](#) [R644543000](#) [R921923000](#) [R921930000](#) [R941344000](#) [R948161000](#) [R999351000](#) [1408-4](#) [1533-1](#) [174-R825B-EX](#)
[NYS508-BU](#) [1680](#) [174-R819B-EX](#) [R644543003](#) [R644543020](#) [R644543021](#) [R921926000](#) [R921931000](#) [R921932000](#) [R921934000](#)
[R929991000](#) [R941460000](#) [R941461000](#) [R941463600](#) [R941920600](#) [R948160000](#) [31B-2-RED](#) [032-0016-023](#) [105-1106-001](#) [108-1000-106](#)
[108-2301-621](#) [111-0707-001](#) [66001-9](#) [7013](#) [1395080-1](#) [930166100](#) [NYS508-GR](#) [NYS508-W](#) [NYS508-Y](#) [NYS511-R](#) [BP30-2BR10-B PKG](#)
[BP30-10-WT](#) [BP30-2BR-B PKG](#) [BP30Y-1 PKG](#) [R941049000](#) [R941340000](#) [R948141029](#) [R921922000](#) [R644543022](#)