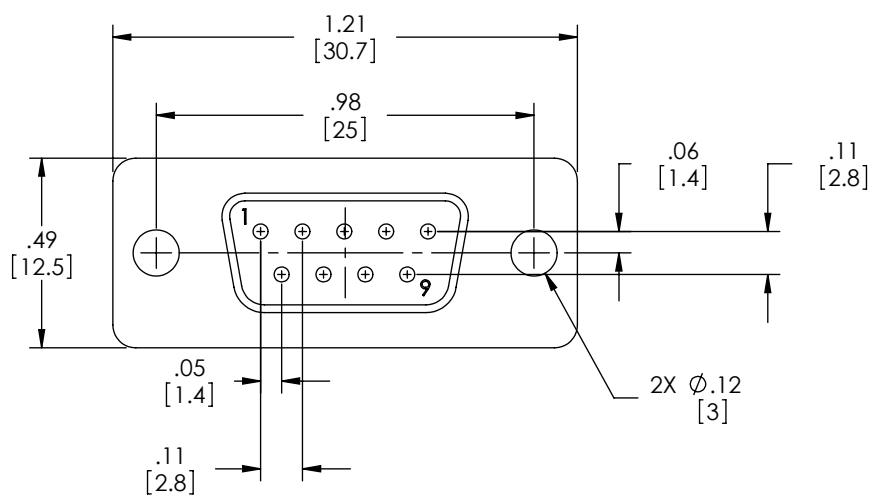
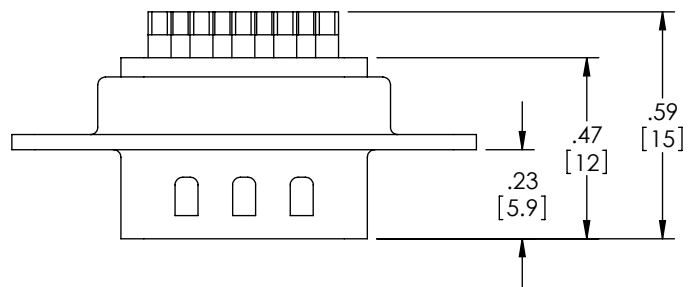


THE INFORMATION CONTAINED IN THIS DRAWING IS THE SOLE PROPERTY OF L-COM, INC. ANY REPRODUCTION IN PART OR WHOLE WITHOUT THE WRITTEN PERMISSION OF L-COM, INC. IS PROHIBITED.

REVISIONS			
REV	DESCRIPTION	DATE	APPROVED
E	ECN 4944: ADDED FRONT & BACK SHELL FINISH, ADDED PKG NOTE, DEL CURRENT RATING	8/3/10	D. CASTRO
-	-	-	-
-	-	-	-
-	-	-	-



**NOTES:**

**MATERIAL:**  
 CONNECTOR SHELL: STEEL  
 CONNECTOR INSULATOR: THERMOPLASTIC, UL94V-0 RATED  
 CONTACTS: COPPER ALLOY

**FINISH:**  
 FRONT SHELL: NICKEL PLATED  
 BACK SHELL: TIN PLATED  
 CONTACTS: GOLD FLASH IN CONTACT AREA OVER NICKEL PLATE  
 SOLDER CUPS: TIN PLATED

**ELECTRICAL:**  
 DIELECTRIC WITHSTANDING VOLTAGE: 1000 VAC rms  
 INSULATION RESISTANCE: 5000MΩ @ 500VDC

**MISCELLANEOUS:**  
 OPERATING TEMPERATURE: -55°C TO +105°C  
 CONNECTOR SHALL BE PACKAGED IN ACCORDANCE WITH L-COM SPEC PS-0031.

CATALOG #	PACKAGING
SD9P	1/BAG
SD9P-TRAY	50/TRAY

UNLESS OTHERWISE SPECIFIED, DIMENSIONS ARE IN INCHES [mm] OVERALL CABLE LENGTH TOLERANCE: <math>\le 12 [305] = +1 [25] / -0</math> <math>>12 [305] \le 60 [1524] = +2 [51] / -0</math> <math>>60 [1524] \le 120 [3048] = +4 [102] / -0</math> <math>>120 [3048] \le 300 [7620] = +6 [152] / -0</math> <math>>300 [7620] = +3\% / -0\%</math>	APPROVALS	DATE		45 BEECHWOOD DRIVE NORTH ANDOVER, MA 01845
	DRAWN BY B.MAZEJKA	11/10/2003		
ALL OTHER DIMENSIONAL TOLERANCES: .X = ±.2 .XX = ±.02 .XXX = ±.005	CHECKED BY C.McCORMICK	12/08/2003	CATEGORY DSUB	
	APPROVED BY D.PARHAM	12/08/2003	PRODUCT DESCRIPTION DB9M SOLDER CUP CONNECTOR	
PROJECTION 	CONFIGURATION DETAILS OF UNDIMENSIONED FEATURES MAY VARY	COLOR VARIATIONS MAY OCCUR	SIZE <b>A</b>	FSCM NO. <b>43321</b>
			DWG. NO. SD9P	REV. <b>E</b>
	1AC08-016	SCALE: NONE	CAD FILE: SD9P.SLDDRW	SHEET 1 OF 1

## X-ON Electronics

Largest Supplier of Electrical and Electronic Components

*Click to view similar products for [l-com manufacturer](#):*

Other Similar products are found below :

[FOA-550A](#) [SDRA15AG](#) [UMC-201](#) [CSMN50MF-5](#) [CSMNB15MF-15](#) [TRD815RA2BL-5](#) [CA3N050](#) [CA3A-90DA-1M](#) [U3A00003-03M](#)  
[CTLF3VGAMM-20](#) [HDCAMM-3](#) [U3A00014-03M](#) [ECF-SK-25](#) [CSMT15MF-10](#) [CSMT15MM-15](#) [CSMT15MM-25](#) [CSPL15MF-50](#)  
[CSPL25MF-25](#) [CSPL9MF-10](#) [CSPL9MF-5](#) [CSPL25MF-5](#) [CSPL25MF-2.5](#) [AL-IPEPS](#) [NB201611-10F-1](#) [TDG1026KC5-MNL](#) [NB121005-](#)  
[10F](#) [TRD855SRA6DBL-05M](#) [TRD855SRA6DBL-10M](#) [TRD855SRA7DBL-1M](#) [TRD855SRA7DBL-10M](#) [PR175SCDLCQ24](#) [TRG508-T4T-](#)  
[3M](#) [TRA5261-15F](#) [TRA5261S-1F](#) [TRA6261-1F](#) [TRA6261-10F](#) [USBBFT](#) [DGB25M](#) [CASATAL-18](#) [CSM25MM-10](#) [CSM37MF-10](#)  
[CSUSB-100](#) [CA3A-90RA-1M](#) [CA3A-90RMICB-1M](#) [U2A00003-3M](#) [U3A00003-05M](#) [U2A00008-12I](#) [U3A00056-03M](#) [U3A00007-075M](#)  
[U3A00007-1M](#)