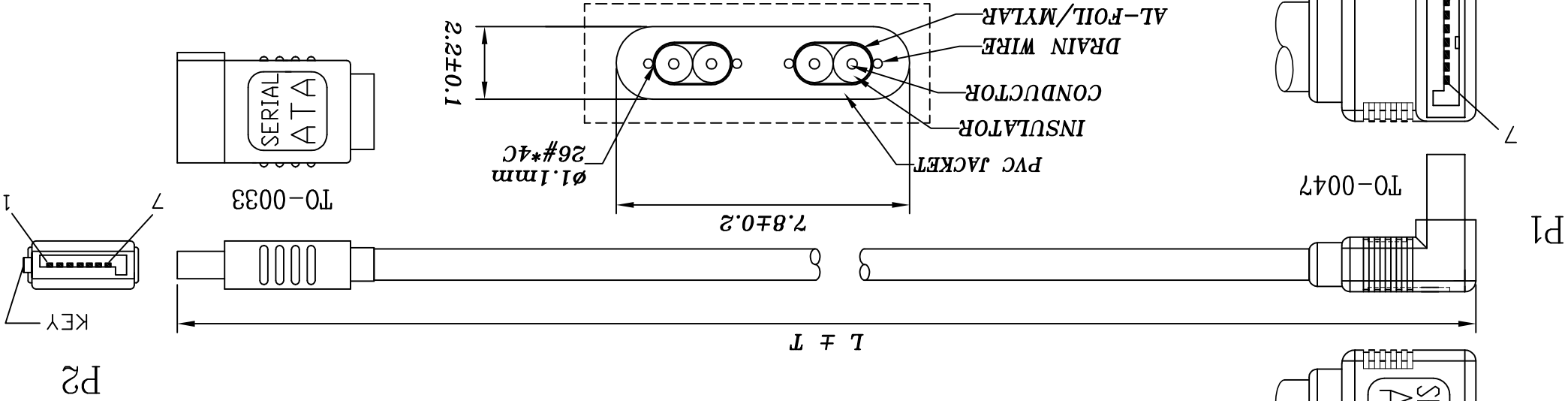
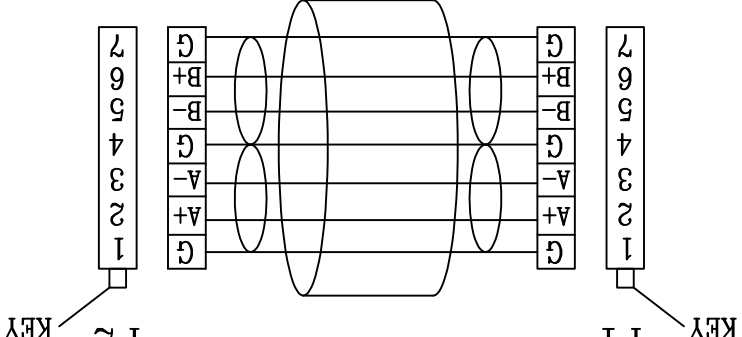


ROHS-COMPLIANT

LTR	REV.	DESCRIPTION	DATE
Δ*2	D	ECR #090224-2 EDIT PACKING,ADD BAR CODE NO.	02/24/09'
Δ*4	C	ECR #070330-3 ADD ROHS, EDIT CABLE SPEC,PACKING,CONN	04/03/07'



PIN ASSIGNMENT 1:1



NOTE:

1. CABLE:
UL2725 80°C 30V [26AWG(1/0.404 T.C)*2F+AL/MY+DRAIN WIRE(1/0.32 T.C)*2]
INS:FOAM-PE OD:Ø1.1±0.05mm
PVC JACKET OD:Ø(2.2±0.1)*(7.8±0.2)mm COLOR:RED (PANTONE 200C)
IMPEDANCE: 100±5 OHM
CONNECTOR: 2-1 MATERIAL:
HOUSING: HIGH TEMPERATURE POLYESTER & GLASS FIBER UL 94V-0
TERMINAL: COPPER ALLOY,CRIMP TYPE
2-1 PLATING:CONTACT AREA: G/F
3. HOOD: MOLDED TYPE, PVC 45F, COLOR:BLACK(NK-K01)
4. CABLE ASS'Y ELECTRICAL TEST: 4-1 100% OPEN SHORT & MIS WIRE TEST
4-2 CONTACT RESISTANCE 2 OHM MAX
4-3 INSULATION RESISTANCE 20M OHM MIN
5. PACKING: EACH PC / POLYBAG + HEADER CARD + P/N LABEL
△ 100 PCS / INNER CARTON, 2 INNER CARTON / MASTER CARTON

Scale	Units	App'd	Check	Engr	Dwg No.	REV:	Sheet
Scale NONE	Units m/m	App'd	Check	Engr	Dwg No. 140-1099	REV:	Sheet 1/1
Title		Customer P/N		Customer T-RAG			
Serial ATA SIGNAL CABLE		FANNIE 02/24/09'		Customer P/N			
Tolerance Inch M/M		Draw		Customer P/N			
.X	.30	.XXX		Customer P/N			
.XX	.10	.05		Customer P/N			
.XX	.05	.05		Customer P/N			

DWG	P/N	L (mm)	T (mm)	INNER CTN(mm)	MASTER CTN(mm)	BAR CODE NO.
140-1099-2	11.03.1561	1000	20	360*310*150	380*330*340	7611990160518
140-1099-1	11.03.1556	500	20	360*310*100	380*330*240	7611990160501

X-ON Electronics

Largest Supplier of Electrical and Electronic Components

Click to view similar products for [USB Cables / IEEE 1394 Cables category](#):

Click to view products by [Roline manufacturer](#):

Other Similar products are found below :

[68768-0173](#) [FNY-W6003-01](#) [88764-0800](#) [13805532](#) [148700-1](#) [17-200621](#) [17-250051P](#) [954](#) [AC102012-2](#) [IP-USB1\(C10\)S-RW](#)
[CABLE/RTP/USB/DT](#) [0847290003](#) [10115240-12200LF](#) [RS232-GTD](#) [USBFTVX2SA2N03A](#) [USBFTV2SA2N03A](#) [1689404-1](#) [FTP-](#)
[629Y401](#) [FTP-628Y402](#) [943301-001](#) [FNY-W6022](#) [FNY-W6003-03](#) [1310-1015-05](#) [1310-1018-04](#) [1310-1019-04](#) [0887283402](#) [UA-](#)
[30AMFM-SL7B02](#) [UA-30AMFM-SL7B01](#) [UA-30AFM-LD7B03](#) [UA-30AMFM-SL7B03](#) [USBAPSCC7202A](#) [UES-1001A160](#) [UES-](#)
[1003A160](#) [USBFTVX7SA2N20A](#) [USBFTVX2SA2N20A](#) [USBFTV2PEMSA2N10A](#) [FTP-629Y602](#) [USBCAMCM100](#) [USB A/F*2 to 2.54](#)
[2*5P-SH L=400mm](#) [EP-CBUSB10P2FLT](#) [1310-1033-01](#) [1310-1037-04](#) [ASR-USB](#) [68784-0075](#) [17-241361](#) [17-230471](#) [217B-BC02](#) [USB-29](#)
[19800-010500-200-RS](#) [USB+MINI DIN 6P WITH BKT](#)