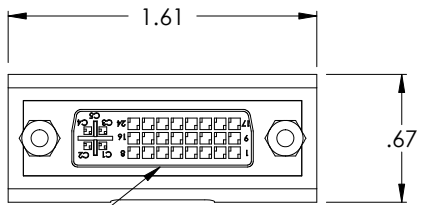
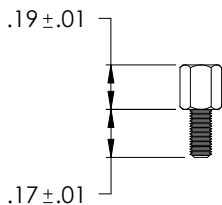
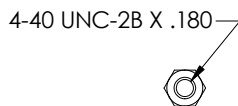


THE INFORMATION CONTAINED IN THIS DRAWING IS THE SOLE PROPERTY OF L-COM, INC. ANY REPRODUCTION IN PART OR WHOLE WITHOUT THE WRITTEN PERMISSION OF L-COM, INC. IS PROHIBITED.

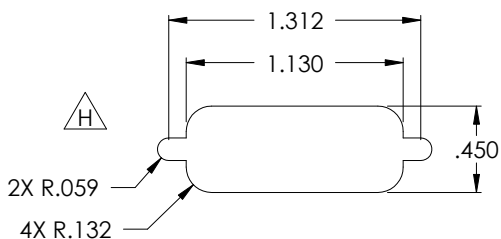
REVISIONS			
REV	DESCRIPTION	DATE	APPROVED
E	CHANGED SCREW LENGTH (ECN1325)	03/12/03	DFP
F	ECN16641: ADDED COMPONENT SPECIFICATION TABLE	1/16/04	DFP
G	ECN2010: HOUSING MATL WAS PVC. ADDED UL94V-0 RATED	3/18/05	DFP
H	ECN#2101: EDITED PANEL CUT-OUT DIMENSIONS	06/08/05	M.LAHEY



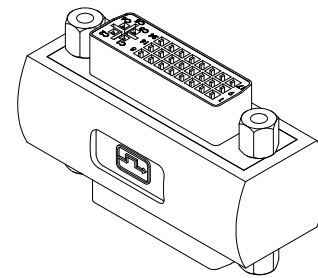
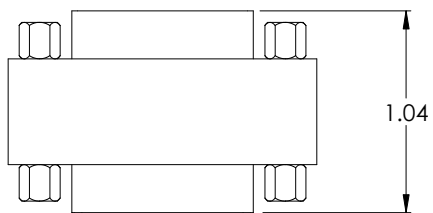
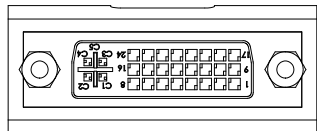
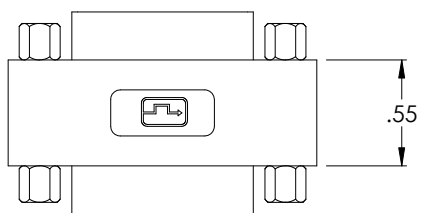
2X FEMALE DVH CONNECTOR



4X JACKSCREW SPECIFICATION



RECOMMENDED PANEL CUT-OUT
MAXIMUM MATERIAL THICKNESS: .06"



Component Specifications	
Material	
Housing	High Temperature Thermoplastic, UL94V-0 rated Color: Ivory
Connector Shell	SPPC
Connector Insulator	PBT
Connector Contact	Phosphor Bronze
Hardware	Brass or Steel
Internal Shielding	Copper foil
Finish	
Connector Shell	Tin over Nickel
Contact	Gold Flash
Electrical	
Current Rating	1.5 A @ 40 Vac
Voltage rating	150Vac (MAX)
Insulation Resistance	1000MΩ @ 500 VDC
Contact Resistance	20mΩ (MAX)
Environmental	
Operating Temperature range	-20°C to 85°C

CS-212

NOTE
1. CONNECTORS ARE WIRED STRAIGHT THROUGH, PIN TO PIN.

UNLESS OTHERWISE SPECIFIED,
DIMENSIONS ARE IN INCHES
TOLERANCES ARE:
X ±.1
XX ±.05
XXX ±.005
CABLE LENGTH TOLERANCE
<300" ±5% >300" ±2%

APPROVALS	DATE
DRAWN BY D. PARHAM	12/26/2002
CHECKED BY T. CLARK	01/03/2003
APPROVED BY R. CARRICK	01/10/2003

CONFIGURATION DETAILS OF
UNDIMENSIONED FEATURES
MAY VARY

L-com CONNECTIVITY PRODUCTS		45 BEECHWOOD DRIVE NORTH ANDOVER, MA 01845	
PRODUCT DESCRIPTION DVH-BULKHEAD ADAPTOR			
DRAWING TITLE OUTLINE DRAWING			
SIZE A	FSCM NO. 43321	DWG. NO. DMB605FF-OD1	REV. H
SCALE: NONE		CAD FILE: DMB605FF-OD1.SLDDRW	SHEET 1 OF 1

X-ON Electronics

Largest Supplier of Electrical and Electronic Components

Click to view similar products for [l-com manufacturer](#):

Other Similar products are found below :

[FOA-550A](#) [SDRA15AG](#) [UMC-201](#) [CSMN50MF-5](#) [CSMNB15MF-15](#) [TRD815RA2BL-5](#) [CA3N050](#) [CA3A-90DA-1M](#) [U3A00003-03M](#)
[CTLF3VGAMM-20](#) [HDCAMM-3](#) [U3A00014-03M](#) [ECF-SK-25](#) [CSMT15MF-10](#) [CSMT15MM-15](#) [CSMT15MM-25](#) [CSPL15MF-50](#)
[CSPL25MF-25](#) [CSPL9MF-10](#) [CSPL9MF-5](#) [CSPL25MF-5](#) [CSPL25MF-2.5](#) [AL-IPEPS](#) [NB201611-10F-1](#) [TDG1026KC5-MNL](#) [NB121005-](#)
[10F](#) [TRD855SRA6DBL-05M](#) [TRD855SRA6DBL-10M](#) [TRD855SRA7DBL-1M](#) [TRD855SRA7DBL-10M](#) [PR175SCDLCQ24](#) [TRG508-T4T-](#)
[3M](#) [TRA5261-15F](#) [TRA5261S-1F](#) [TRA6261-1F](#) [TRA6261-10F](#) [USBBFT](#) [DGB25M](#) [CASATAL-18](#) [CSM25MM-10](#) [CSM37MF-10](#)
[CSUSB-100](#) [CA3A-90RA-1M](#) [CA3A-90RMICB-1M](#) [U2A00003-3M](#) [U3A00003-05M](#) [U2A00008-12I](#) [U3A00056-03M](#) [U3A00007-075M](#)
[U3A00007-1M](#)