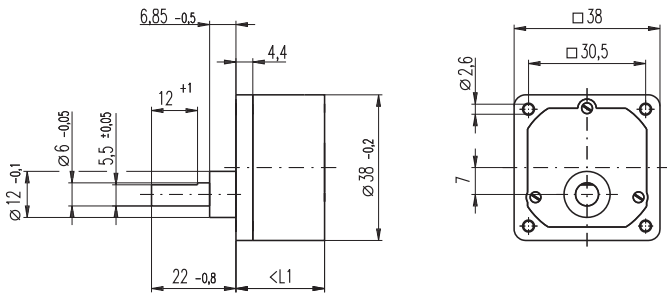


Spur Gearhead GS 38 A $\varnothing 38$ mm, 0.1 - 0.6 Nm



Technical Data

Spur Gearhead	straight teeth
Output shaft	stainless steel
Bearing at output	sleeve bearing
Radial play, 12 mm from flange	max. 0.1 mm
Axial play	0.03 - 0.2 mm
Max. radial load, 12 mm from flange	50 N
Max. permissible axial load	30 N
Max. permissible force for press fits	500 N
Recommended input speed	< 5000 rpm
Recommended temperature range	-5 ... +80°C

M 1:2

- Stock program
- Standard program
- Special program (on request)

Order Number

Gearhead Data	Order Number									
	110451	110452	110453	110454	110455	110456	110457	110458	110459	
1 Reduction	6 : 1	10 : 1	18 : 1	30 : 1	60 : 1	100 : 1	200 : 1	500 : 1	900 : 1	
2 Reduction absolute	6	10	18	30	60	100	200	500	900	
3 Max. motor shaft diameter mm	3	3	3	3	3	3	3	3	3	
4 Number of stages	2	2	3	3	4	4	5	6	6	
5 Max. continuous torque Nm	0.1	0.1	0.2	0.2	0.3	0.6	0.6	0.6	0.6	
6 Intermittently permissible torque at gear output Nm	0.3	0.3	0.6	0.6	0.9	1.8	1.8	1.8	1.8	
7 Sense of rotation, drive to output	=	=	≠	≠	=	=	≠	=	=	
8 Max. efficiency %	81	81	73	73	66	66	59	53	53	
9 Weight g	55	55	60	60	65	65	70	75	75	
10 Average backlash no load °	1.0	1.0	1.5	1.5	2.0	2.0	2.5	3.0	3.0	
11 Mass inertia gcm ²	0.7	0.6	0.4	0.4	0.3	0.2	0.2	0.2	0.2	
12 Gearhead length L1* mm	20.6	20.6	23.1	23.1	25.6	25.6	28.1	30.6	30.6	

* for EC 32 flat L1 is + 2.0 mm



maxon Modular System

+ Motor	Page	+ Sensor / Brake	Page	Overall length [mm] = Motor length + gearhead length + (sensor / brake) + assembly parts														
A-max 26	105-112			65.4	65.4	67.9	67.9	70.4	70.4	72.9	75.4	75.4						
A-max 26	106-112	MEnc 13	275	72.5	72.5	75.0	75.0	77.5	77.5	80.0	82.5	82.5						
A-max 26	106-112	MR	264	74.2	74.2	76.7	76.7	79.2	79.2	81.7	84.2	84.2						
A-max 26	106-112	Enc 22	267	79.8	79.8	82.3	82.3	84.8	84.8	87.3	89.8	89.8						
A-max 26	116-112	HED_ 5540	269/271	84.2	84.2	86.7	86.7	89.2	89.2	91.7	94.2	94.2						
A-max 32	113/115			83.6	83.6	86.1	86.1	88.6	88.6	91.1	93.6	93.6						
A-max 32	114/116			82.2	82.2	84.7	84.7	87.2	87.2	89.7	92.2	92.2						
A-max 32	114/116	MR	265	93.4	93.4	95.9	95.9	98.4	98.4	100.9	103.4	103.4						
A-max 32	114/116	HED_ 5540	269/271	103.0	103.0	105.5	105.5	108.0	108.0	110.5	113.0	113.0						
RE-max 21	127/128			49.6	49.6	52.1	52.1	54.6	54.6	57.1	59.6	59.6						
RE-max 21, 3.5 W	128	MR	261/263	54.7	54.7	57.2	57.2	59.7	59.7	62.2	64.7	64.7						
RE-max 21	129/130			52.2	52.2	54.7	54.7	57.2	57.2	59.7	62.2	62.2						
RE-max 21, 6 W	130	MR	261/263	56.5	56.5	59.0	59.0	61.5	61.5	64.0	66.5	66.5						
RE-max 24	131-134			52.6	52.6	55.1	55.1	57.6	57.6	60.1	62.6	62.6						
RE-max 24	132/134	MR	261/263	57.6	57.6	60.1	60.1	62.6	62.6	65.1	67.6	67.6						
EC 32 flat, 15 W	190			38.6	38.6	41.1	41.1	43.6	43.6	46.1	48.6	48.6						
EC 32 flat, IE, IP 00	191			48.7	48.7	51.2	51.2	53.7	53.7	56.2	58.7	58.7						
EC 32 flat, IE, IP 40	191			50.4	50.4	52.9	52.9	55.4	55.4	57.9	60.4	60.4						

X-ON Electronics

Largest Supplier of Electrical and Electronic Components

Click to view similar products for [maxon](#) manufacturer:

Other Similar products are found below :

[110340](#) [250521](#) [203892](#) [110455](#) [403962](#) [440557](#) [403112](#) [137576](#) [118391](#) [110048](#) [251601](#) [403957](#) [367661](#) [240987](#) [242472](#) [110338](#)