

Split-Core AC Current Sensor SCT-0400

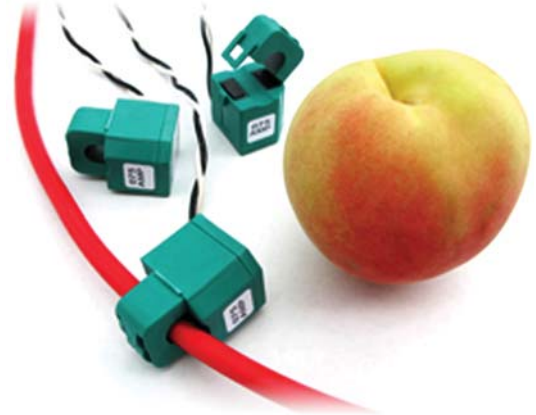
0.40" Opening With Ratings Up To 75 Amps

Description:

Magnelab's SCT-0400 Series split-core current sensors "sense" AC current up to 75 Amps passing through the center conductor. Split-core transformers are ideal for installation on existing electrical wiring by snapping around the conductor. The SCT series have a self-locking mechanism guaranteed for 500 opening-closing cycles. Custom outputs and other parameters are available at customer request.

Features:

- Rated input up to 75 Amp
- Output 0.333 Volt AC at rated current
- Linearity accuracy $\pm 1\%$
- Accuracy at 10% to 130% of rated current
- Phase angle < 2 degrees (valid for 20A or higher)

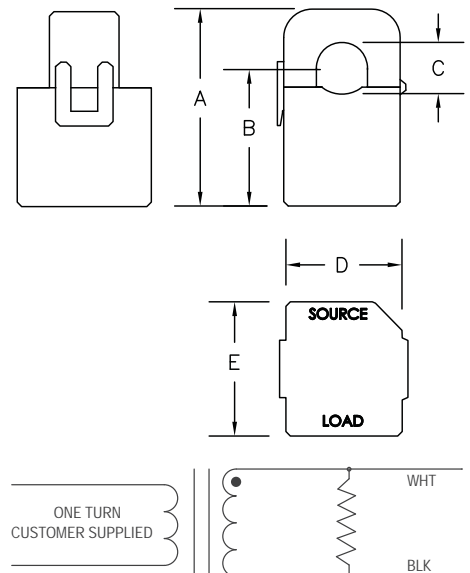
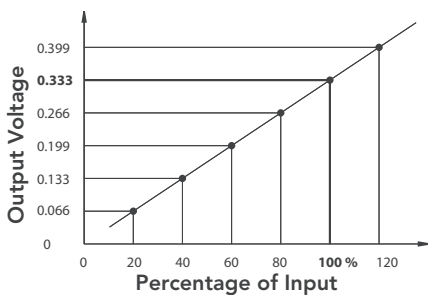


- Operates from 50 Hz to 1,000 Hz
- 8 ft. twisted-pair lead
- Maximum Voltage: 600 V (on bare conductor)
- Hinge guaranteed for 500 opening-closing cycles.
- UL Recognized, CE, and RoHS compliant

PART NUMBER AND RATING	
SCT-0400-000	No Burden Resistor*
SCT-0400-005	5 Amp
SCT-0400-010	10 Amp
SCT-0400-015	15 Amp
SCT-0400-020	20 Amp
SCT-0400-025	25 Amp
SCT-0400-030	30 Amp
SCT-0400-040	40 Amp
SCT-0400-050	50 Amp
SCT-0400-060	60 Amp
SCT-0400-075	75 Amp

* Zener diode limits the output voltage to 22 V

DIMENSION	INCH	MM
A	1.560	39.62
B	1.000	25.40
C	0.400	10.16
D	1.000	25.40
E	1.000	25.40



X-ON Electronics

Largest Supplier of Electrical and Electronic Components

Click to view similar products for [magnelab](#) manufacturer:

Other Similar products are found below :

[SCT-1250-200](#) [SCT-0750-005*](#) [SCT-0400-005*](#)