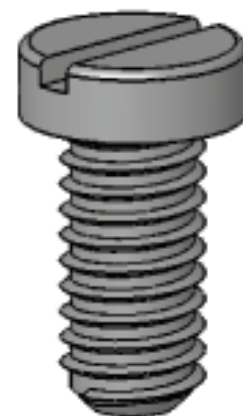
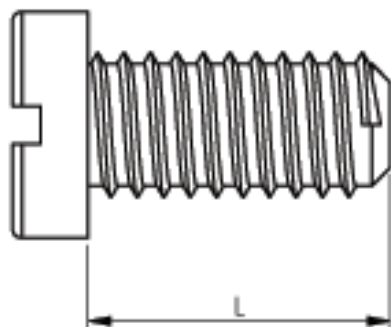


AVAILABLE BY SPECIAL ORDER-NAFTA REGION ONLY

REV.	MODIFICATION.	DATE	DRN
01	NEW DRAWING	18/10/04	NJB
02	ECN05-026	03/02/05	OW
03	ECN05-056	27/04/05	OW



NOTES:
1) ALL PRIMARY DIMENSIONS IN mm,
SECONDARY DIMENSIONS IN INCHES.

NSE-1207-M6-L	6.0 (0.236)	8.0 (0.315)	10.0 (0.394)	12.0 (0.473)	16.0 (0.630)	20.0 (0.788)	25.0 (0.985)	30.0 (1.182)	40.0 (1.575)	50.0 (1.969)
NSE-1207-M5-L	6.0 (0.236)	8.0 (0.315)	10.0 (0.394)	12.0 (0.473)	16.0 (0.630)	20.0 (0.788)	25.0 (0.985)	30.0 (1.182)	40.0 (1.575)	
NSE-1207-M4-L	6.0 (0.236)	8.0 (0.315)	10.0 (0.394)	12.0 (0.473)	16.0 (0.630)	20.0 (0.788)	25.0 (0.985)	30.0 (1.182)	40.0 (1.575)	
NSE-1207-M3-L	4.0 (0.158)	5.0 (0.197)	6.0 (0.236)	8.0 (0.315)	10.0 (0.394)	12.0 (0.473)	16.0 (0.630)	20.0 (0.788)	25.0 (0.985)	30.0 (1.182)
NSE-1207-M2.5-L	6.0 (0.236)	8.0 (0.315)	10.0 (0.394)	12.0 (0.473)	15.0 (0.591)	20.0 (0.788)	25.0 (0.985)			
NSE-1207-M2-L	4.0 (0.158)	5.0 (0.197)	6.0 (0.236)	8.0 (0.315)	10.0 (0.394)	12.0 (0.473)	16.0 (0.630)	20.0 (0.788)	25.0 (0.985)	
PART REF:	L									

INFORMATION CONTAINED IN THIS DOCUMENT IS CONFIDENTIAL TO RICHCO INTERNATIONAL Co. Ltd. AND MAY NOT BE DISCLOSED OR REPRODUCED IN WHOLE OR PART WITHOUT THEIR WRITTEN CONSENT



METRIC GENERAL TOLERANCES ± 0.25
ARE PRIMARY UNLESS OTHERWISE STATED
1 DECIMAL PLACE \pm
2 DECIMAL PLACES \pm
ANGULAR $\pm 1^\circ$

IMPERIAL GENERAL TOLERANCES ± 0.010
ARE FOR REFERENCE UNLESS OTHERWISE
1 DECIMAL PLACE \pm
2 DECIMAL PLACES \pm
ANGULAR $\pm 1^\circ$

MATERIAL: NYLON 6/6 (RMS-179)				COLOUR: NATURAL	
TITLE: METRIC SCREW [DIN EN ISO 1207]				PART No: NSE-1207-MX-L	
DRG No: 04-114		NPR REF:		SIZE A4	
DRN NJB	DATE 18/10/04	CHKD I.C	DATE 18/10/04	SCALE NTS	SHEET No 1 OF 1

X-ON Electronics

Largest Supplier of Electrical and Electronic Components

Click to view similar products for [richco](#) manufacturer:

Other Similar products are found below :

[KLB450ART](#) [RBS-5-BK](#) [FMB-1](#) [RRC-16-9-28-M2](#) [RRH-142-80-150](#) [DHURCS-4-01](#) [RRC-16-9-28-M1](#) [RT-310-190-222](#) [RLCBSR-10-01](#)
[OFST-1-L](#) [RFS1-15-7-A5](#) [RT-145-102-80](#) [RSH6-76100-50A](#) [RFP1-34-28-A5](#) [CAT-15-PP-BU](#) [CAT-32-PP](#) [RT-142-64-135](#) [FGPT-92](#)
[MFTH-2-01A-RT-M](#) [RT-290-190-77](#) [BMS-SAX300MM](#) [RRH-110-50-250](#) [SHR-32-6NB](#) [RCP-040-T](#) [LEDS2M-440-01](#) [SHR-C2](#) [RKCF-08-](#)
[A5](#) [CBSS-8-01](#) [RRH-120-85-150](#) [RFS1-15-15-A5](#) [RT-280-160-75](#) [MB-1-156](#) [RFS2-34-12-2-A5](#) [RT-175-95-127](#) [RT-290-190-75](#) [RT-](#)
[70-35-40](#) [SNGS-2](#) [SPGSG-2](#) [RT-100-70-50](#) [WSB-2-01A-RT](#) [SP3-4-01](#) [RT-100-70-70](#) [RRH-186-102-286](#) [SHR-32-PPB](#) [VMCGN120-M3-L-](#)
[K](#) [OFHB3-4-19A-RT](#) [RRH-140-90-150](#) [RT-160-120-80](#) [RSFS-450](#) [MSPMST-10-01](#)