

Bus system flat-type plug - SACC-EC-FSD-4CON-M16/0,5 SCO - 1535215


Please be informed that the data shown in this PDF Document is generated from our Online Catalog. Please find the complete data in the user's documentation. Our General Terms of Use for Downloads are valid (<http://phoenixcontact.com/download>)



Bus system flush-type socket, PROFINET, 4-pos., M12-SPEEDCON, D-coded, front/screw mounting with M16 thread, can be positioned, with 0.5 m TPE litz wire, 4 x 0.34 mm²



Key commercial data

Packing unit	1 pc
GTIN	 4 046356 026963
Weight per Piece (excluding packing)	24.7 g
Custom tariff number	85444290
Country of origin	Germany
Product key	ABQCDB

Technical data

Mechanical characteristics

Standards/specifications	M12 connector IEC 61076-2-101
Number of positions	4
Shielded	No
Insertion/withdrawal cycles	> 100
Connection method	Individual wires
Length of cable	0.5 m

Ambient conditions

Ambient temperature (operation)	-25 °C ... 85 °C (Plug / socket)
	-40 °C ... 85 °C (without mechanical actuation)
	-25 °C ... 85 °C (cable, flexible installation)
	-40 °C ... 85 °C (cable, fixed installation)
Degree of protection	IP67

Material data

Bus system flat-type plug - SACC-EC-FSD-4CON-M16/0,5 SCO - 1535215

Technical data

Material data

Inflammability class according to UL 94	V0
Contact carrier material	PA 66
Contact material	CuZn
Contact surface material	Ni/Au
Cable gland material	Zinc die-cast, nickel-plated
Sealing material	NBR

Electrical characteristics

Number of positions	4
Nominal voltage U_N	250 V
Nominal current I_N	4 A
Surge voltage category	II
Pollution degree	3

Classifications

eCl@ss

eCl@ss 4.0	27140815
eCl@ss 4.1	27140815
eCl@ss 5.0	27143423
eCl@ss 5.1	27143423
eCl@ss 6.0	27143423
eCl@ss 7.0	27449001
eCl@ss 8.0	27440103

ETIM

ETIM 2.0	EC001297
ETIM 3.0	EC002061
ETIM 4.0	EC000830
ETIM 5.0	EC002061

UNSPSC

UNSPSC 6.01	31251501
UNSPSC 7.0901	31251501
UNSPSC 11	31251501
UNSPSC 12.01	31251501
UNSPSC 13.2	31251501

Approvals

Approvals

Bus system flat-type plug - SACC-EC-FSD-4CON-M16/0,5 SCO - 1535215

Approvals

Approvals

cULus Recognized / EAC / UL Recognized


Ex Approvals

Approvals submitted

Approval details

cULus Recognized	
mm ² /AWG/kcmil	20
Nominal current I _N	4 A
Nominal voltage U _N	250 V

EAC

UL Recognized 	
mm ² /AWG/kcmil	26-20
Nominal current I _N	4 A
Nominal voltage U _N	250 V

Accessories

Accessories

Protective cap

Screw plug - PROT-M12 - 1680539



An M12 screw plug for the unoccupied M12 sockets of the sensor/actuator cable, boxes and flush-type connectors

Bus system flat-type plug - SACC-EC-FSD-4CON-M16/0,5 SCO - 1535215

Accessories

Screw plug - PROT-M12 SH - 1503302



An M12 screw plug for the unoccupied M12 sockets of the shielded sensor/actuator cable, boxes and flush-type connectors

Screw plug - PROT-M12 FB - 1555538



M12 high-grade steel screw plug, for unoccupied M12 sockets of the sensor/actuator cables, boxes and flush-type connectors for the food industry

Seal

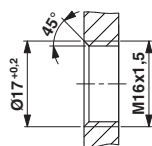
Flat gasket - SACC-M16-SEAL CLM - 1430394



M16 flat gasket, for rear mounting of M12 flush-type connectors with M16 fastening thread

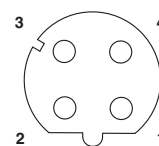
Drawings

Dimensioned drawing



Housing cutout for M16 fastening thread, mounting panel with thread

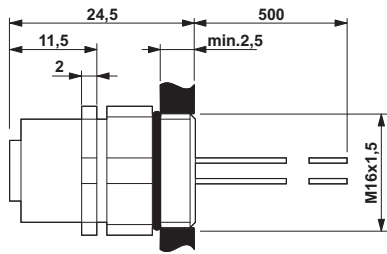
Schematic diagram



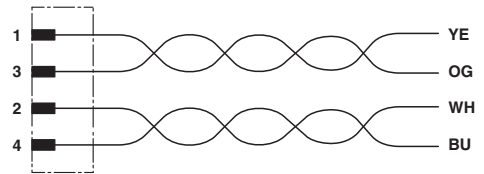
Pin assignment M12 socket, 4-pos., D-coded, female side

Bus system flat-type plug - SACC-EC-FSD-4CON-M16/0,5 SCO - 1535215

Dimensioned drawing



Circuit diagram



M12 flush-type socket, can be positioned

Contact assignment of the M12 socket

X-ON Electronics

Largest Supplier of Electrical and Electronic Components

Click to view similar products for [phoenix contact manufacturer](#):

Other Similar products are found below :

[1203259](#) [3240366](#) [1893300](#) [2800744](#) [2867076](#) [3006564](#) [2800741](#) [5146480](#) [1582539](#) [1623633](#) [1507793](#) [3025587](#) [3069708](#) [1582223](#)
[1431461](#) [1586976](#) [0311647](#) [1460160](#) [1771338](#) [3048387](#) [2814605](#) [0309086](#) [1513716](#) [3035684](#) [5451417](#) [0202219](#) [1647747](#) [1730667](#)
[1709267](#) [5449018](#) [0311634](#) [1730696](#) [3034057](#) [0311579](#) [1730683](#) [0719032](#) [5449843](#) [3240098](#) [0311566](#) [0201391](#) [CRIMPFOX 16 S](#)
[CRIMPSET 25](#) [7001438](#) [ETD-BL-1T-F-300S](#) [MCR-1CLP-I-I-00](#) [MCR-4CLP-I-I-00](#) [MCR-DAC 8-I- 4-BUS](#) [FL EPA WMS](#) [FLK 50/EZ-DR/](#)
[400/KONFEK/S](#) [FLS PB M12 DO 8 M12-2A](#)