








Ampère	Poles	110 V 50 a. 60 Hz	230 V 50 a. 60 Hz	400 V 50 a. 60 Hz	500 V 50 a. 60 Hz	> 50 - 500 V 100 - 300 Hz	> 50 - 500 V over 300 - 500 Hz		
		3pole 4h 4pole 4h 5pole 4h	3pole 6h 4pole 9h 5pole 9h	3pole 9h 4pole 6h 5pole 6h	3pole 7h 4pole 7h 5pole 7h	3pole 10h 4pole 10h 5pole 10h	3pole 2h 4pole 2h 5pole 2h		

Part numbers


	16	3	110 304	110 306	110 309				10/60	161
	16	3		110 306 AS = lockable with padlock (padlock is not included)						
	16	4	110 404	110 409	110 406	110 407	110 410	110 402	10	209
	16	5	110 504	110 509	110				10/60	227
	16	5			110 NI (NI = with nickel plated contacts & glass-fibre reinforced enclosure)					
	32	3	130 304	130 306	130 309				10	291
	32	4	130 404	130 409	130 406	130 407	130 410	130 402	10	300
	32	5	130 504	130 509	130				10/60	320
	32	5			130 NI (NI = with nickel plated contacts & glass-fibre reinforced enclosure)					


pic. 130

Wall sockets  IP 44, external fixing, 1 top cable entry


	16	3	111 304	111 306	111 309				5	356
	16	4	111 404	111 409	111 406	111 407	111 410	111 402	5	389
	16	5	111 504	111 509	111				5	425
	16	5			111 NI (NI = with nickel plated contacts & glass-fibre reinforced enclosure)					
	32	3	131 304	131 306	131 309				5	426
	32	4	131 404	131 409	131 406	131 407	131 410	131 402	5	453
	32	5	131 504	131 509	131				5	489
	32	5			131 NI (NI = with nickel plated contacts & glass-fibre reinforced enclosure)					


pic. 131

Wall sockets  IP 44, internal fixing, 2 cable entries both, top and bottom

	16	3		114 306					5	457
	16	3		115 306 ²⁾					5	467
	32	3		134 306 ³⁾					5	563
	32	3		135 306 ²⁾					5	595
	16	5			114				5	525
	16	5			114 UV ¹⁾				5	525
	16	5			115 ²⁾				5	537
	16	5			115 NI (NI = with nickel plated contacts & glass-fibre reinforced enclosure)					
	32	5			134 ³⁾				5	538
	32	5			134 UV ^{1, 3)}				5	538
32	5			135 ²⁾				5	619	


pic. 134

Mini combinations  IP 44, CEETyp wall socket with Schuko socket

	63	3	161 304	161 306	161 309				1	825
	63	4	161 404	161 409	161 406	161 407	161 410	161 402	2	1046
	63	5	161 504	161 509	161				2	1105
	63	5			161 NI (NI = with nickel plated contacts & glass-fibre reinforced enclosure)					

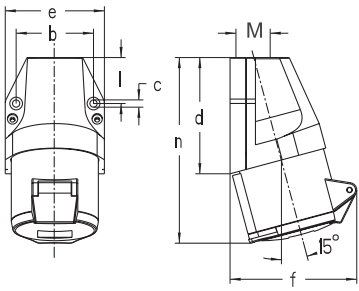
pic. 161

Wall sockets, internal fixing,  IP 44

	63	3	163 304	163 306	163 309				1	1590
	63	4	163 404	163 409	163 406	163 407	163 410	163 402	2	1830
	63	5	163 504	163 509	163				2	1900

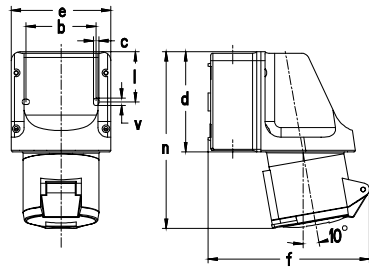
pic. 163

Wall sockets  IP 44, internal fixing, cable entries: 2 x top, 2 x bottom (knock-out)



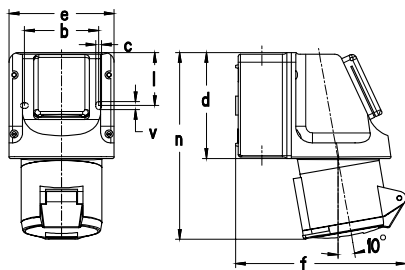
Amp.	16			32		
Pole	3	4	5	3	4	5
b	45.5	60	60	60	60	60
c	5.3	5.3	5.3	5.3	5.3	5.3
d	74	80	80	97	97	97
e	60	74	74	82	82	82
f	75	86	90	103	103	105
l	28	31	31	45	45	45
n	120	128	129	154	154	155
M	20	20	20	25	25	25

Page 10, item 1 110, 130 etc.



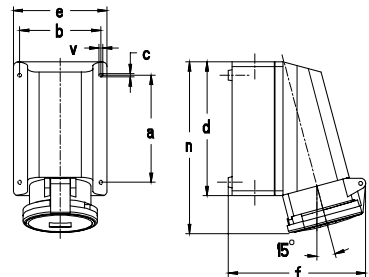
Amp.	16			32		
Pole	3	4	5	3	4	5
b	66.5	66.5	66.5	66.5	66.5	66.5
c	5	5	5	5	5	5
d	96	96	96	96	96	96
e	95	95	95	95	95	95
f	140	143	146	154	154	157
l	47.5	47.5	47.5	47.5	47.5	47.5
n	160	164	164	173	173	173
v	7	7	7	7	7	7
M	20/25	20/25	20/25	20/25	20/25	20/25

Page 10, item 2 111, 131 etc.



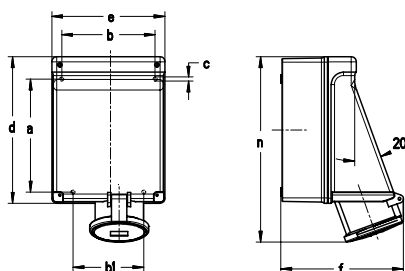
Amp.	16		32	
Pole	3	5	3	5
b	66.5	66.5	66.5	66.5
c	5	5	5	5
d	96	96	96	96
e	95	95	95	95
f	140	146	154	157
l	47.5	47.5	47.5	47.5
n	160	164	173	173
v	7	7	7	7
M	20/25	20/25	20/25	20/25

Page 10, item 3 114, 115 etc.



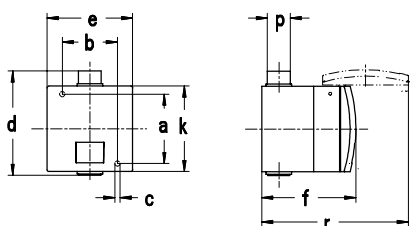
Amp.	63		
Pole	3	4	5
a	136	136	136
b	104	104	104
c	4.2	4.2	4.2
d	172	172	172
e	121	121	121
f	178	178	178
n	220	220	220
v	5	5	5
M	32	32	32

Page 10, item 4 161 etc.



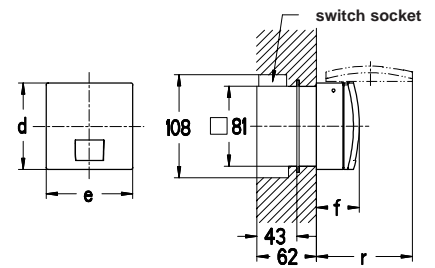
Amp.	63		
Pole	3	4	5
a	183	183	183
b	151	151	151
b1	114	114	114
c	6.5	6.5	6.5
d	237	237	237
e	183	183	183
f	196	196	196
n	302	302	302
M	25/32	25/32	25/32

Page 10, item 5 163 etc.

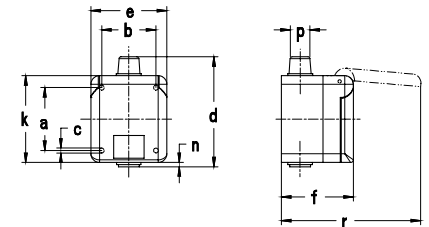


Amp.	16			32		
Pole	3	4	5	3	4	5
a	73	73	73	73	73	73
b	58	58	58	58	58	58
c	5.5	5.5	5.5	5.5	5.5	5.5
d	114	114	114	114	114	114
e	90	90	90	90	90	90
f	92	92	92	98	98	98
k	90	90	90	90	90	90
p	8/20	8/20	8/20	8/20	8/20	8/20
r	150	150	150	160	160	160

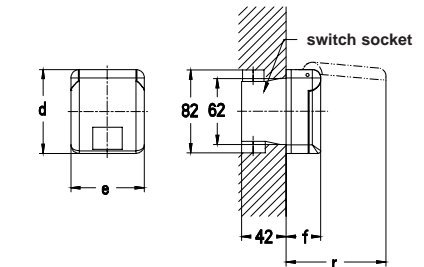
Page 11, item 1 116, 136 etc.



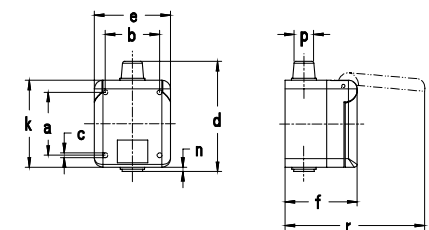
Page 11, item 2 436 etc.



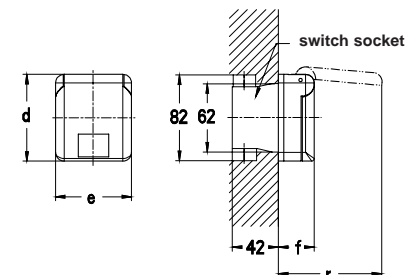
Page 11, item 3 117306 etc.



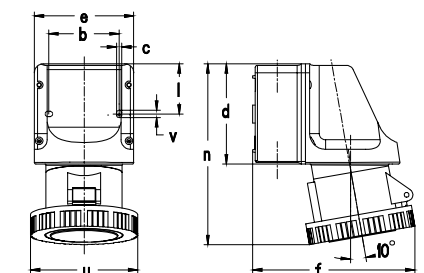
Page 11, item 4 418306 etc.



Page 11, item 5 10 007



Page 11, item 6 10 008



Page 12, item 1 119, 139 etc.

X-ON Electronics

Largest Supplier of Electrical and Electronic Components

Click to view similar products for [walther](#) manufacturer:

Other Similar products are found below :

[339306](#) [269306](#) [239](#) [630406](#) [330](#) [269](#) [430304](#) [10110](#) [130406](#) [630306](#) [410](#) [319306](#) [630](#) [10280](#) [10380](#) [610304](#) [10400](#) [210304](#) [310306](#)
[410304](#) [410306](#) [210](#) [330304](#) [230304](#) [230306](#)