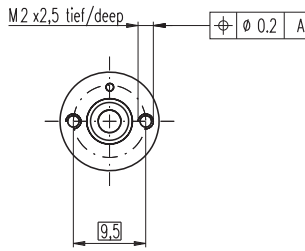
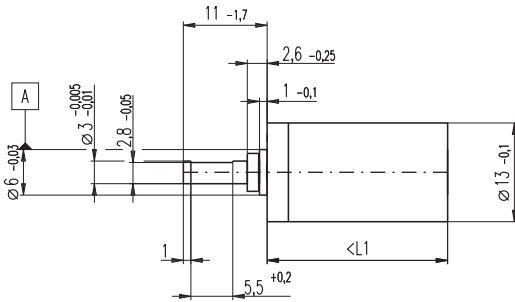


Planetary Gearhead GP 13 A $\varnothing 13$ mm, 0.2 - 0.35 Nm



M 1:1

Technical Data

Planetary Gearhead	straight teeth
Output shaft	stainless steel, hardened
Bearing at output	sleeve bearing
Radial play, 6 mm from flange	max. 0.055 mm
Axial play	0.02 - 0.10 mm
Max. permissible axial load	8 N
Max. permissible force for press fits	100 N
Sense of rotation, drive to output	=
Recommended input speed	< 8000 rpm
Recommended temperature range	-15 ... +100°C
Extended area as option	-35 ... +100°C
Number of stages	1 2 3 4 5
Max. radial load, 6 mm from flange	8 N 12 N 16 N 20 N 20 N

- Stock program
- Standard program
- Special program (on request)

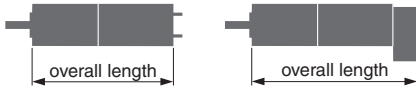
Order Number

110313	110314	110315	110316	110317
--------	--------	--------	--------	--------

Gearhead Data

	110313	110314	110315	110316	110317
1 Reduction	4.1 : 1	17 : 1	67 : 1	275 : 1	1119 : 1
2 Reduction absolute	57/14	3249/196	185193/2744	10556001/38416	601692057/537824
3 Max. motor shaft diameter mm	1.5	1.5	1.5	1.5	1.5
Order Number	352365	352366	352367	352368	352369
1 Reduction	5.1 : 1	26 : 1	131 : 1	664 : 1	3373 : 1
2 Reduction absolute	66/13	4356/169	287496/2197	18974736/28561	1252332576/371293
3 Max. motor shaft diameter mm	1.5	1.5	1.5	1.5	1.5
4 Number of stages	1	2	3	4	5
5 Max. continuous torque Nm	0.20	0.20	0.30	0.30	0.35
6 Intermittently permissible torque at gear output Nm	0.30	0.30	0.45	0.45	0.53
7 Max. efficiency %	91	83	75	69	62
8 Weight g	11	14	17	20	23
9 Average backlash no load °	1.0	1.2	1.5	1.8	2.0
10 Mass inertia gcm ²	0.025	0.015	0.015	0.015	0.015
11 Gearhead length L1* mm	16.0	19.9	23.7	27.6	31.4

* for A-max 12 and RE-max 13 L1 is + 0.2 mm



maxon Modular System

+ Motor	Page	+ Sensor / Brake	Page	Overall length [mm] = Motor length + gearhead length + (sensor / brake) + assembly parts				
RE 13	57/59			35.4	39.3	43.1	47.0	50.8
RE 13, 0.75 W	59	MR	257-259	42.5	46.4	50.2	54.1	57.9
RE 13, 0.75 W	59	MEnc 13	275	43.2	47.1	50.9	54.8	58.6
RE 13	61/63			47.6	51.5	55.3	59.2	63.0
RE 13, 2 W	63	MR	257-259	54.7	58.6	62.4	66.3	70.1
RE 13, 2 W	63	MEnc 13	275	55.4	59.3	63.1	67.0	70.8
RE 13, 1.5 W	65/67			38.5	42.4	46.2	50.1	53.9
RE 13, 1.5 W	67	MR	257-259	44.6	48.5	52.3	56.2	60.0
RE 13, 1.5 W	67	MEnc 13	275	46.5	50.4	54.2	58.1	61.9
RE 13, 3 W	69/71			50.7	54.6	58.4	62.3	66.1
RE 13, 3 W	71	MR	257-259	56.8	60.7	64.5	68.4	72.2
RE 13, 3 W	71	MEnc 13	275	58.7	62.6	66.4	70.3	74.1
A-max 12	91/92			37.6	41.5	45.3	49.2	53.0
A-max 12, 0.5 W	92	MR	257-259	41.7	45.6	49.4	53.3	57.1
RE-max 13	119/120			36.9	40.8	44.6	48.5	52.3
RE-max 13, 0.75 W	120	MR	257-259	41.6	45.5	49.3	53.2	57.0
RE-max 13	121/122			47.9	51.8	55.6	59.5	63.3
RE-max 13, 2 W	122	MR	257-259	52.6	56.5	60.3	64.2	68.0
EC 13, 6 W	144			37.4	41.3	45.1	49.0	52.8
EC 13, 12 W	145			49.6	53.5	57.3	61.2	65.0

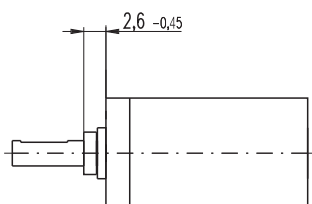
Option Ball Bearing

Order Number

Technical Data

4.1 : 1	144300	131 : 1	352393
5.1 : 1	352391	275 : 1	144303
17 : 1	144301	664 : 1	352394
26 : 1	352392	1119 : 1	144304
67 : 1	144302	3373 : 1	352395

Planetary Gearhead	straight teeth
Output shaft	stainless steel, hardened
Bearing at output	preloaded ball bearings
Radial play, 6 mm from flange	max. 0.04 mm
Axial play at axial load	< 5 N 0 mm
	> 5 N max. 0.04 mm
Max. permissible axial load	8 N
Max. permissible force for press fits	25 N
Sense of rotation, drive to output	=
Recommended input speed	< 8000 rpm
Recommended temperature range	-15 ... +100°C
Extended area as option	-35 ... +100°C
Number of stages	1 2 3 4 5
Max. radial load, 6 mm from flange	10 N 15 N 20 N 20 N 20 N
Gearhead values according to sleeve bearing version	



Gearhead length: L1 + 0.2 mm

X-ON Electronics

Largest Supplier of Electrical and Electronic Components

Click to view similar products for [maxon](#) manufacturer:

Other Similar products are found below :

[110340](#) [250521](#) [203892](#) [110455](#) [403962](#) [440557](#) [403112](#) [137576](#) [118391](#) [110048](#) [251601](#) [403957](#) [367661](#) [240987](#) [242472](#) [110338](#)