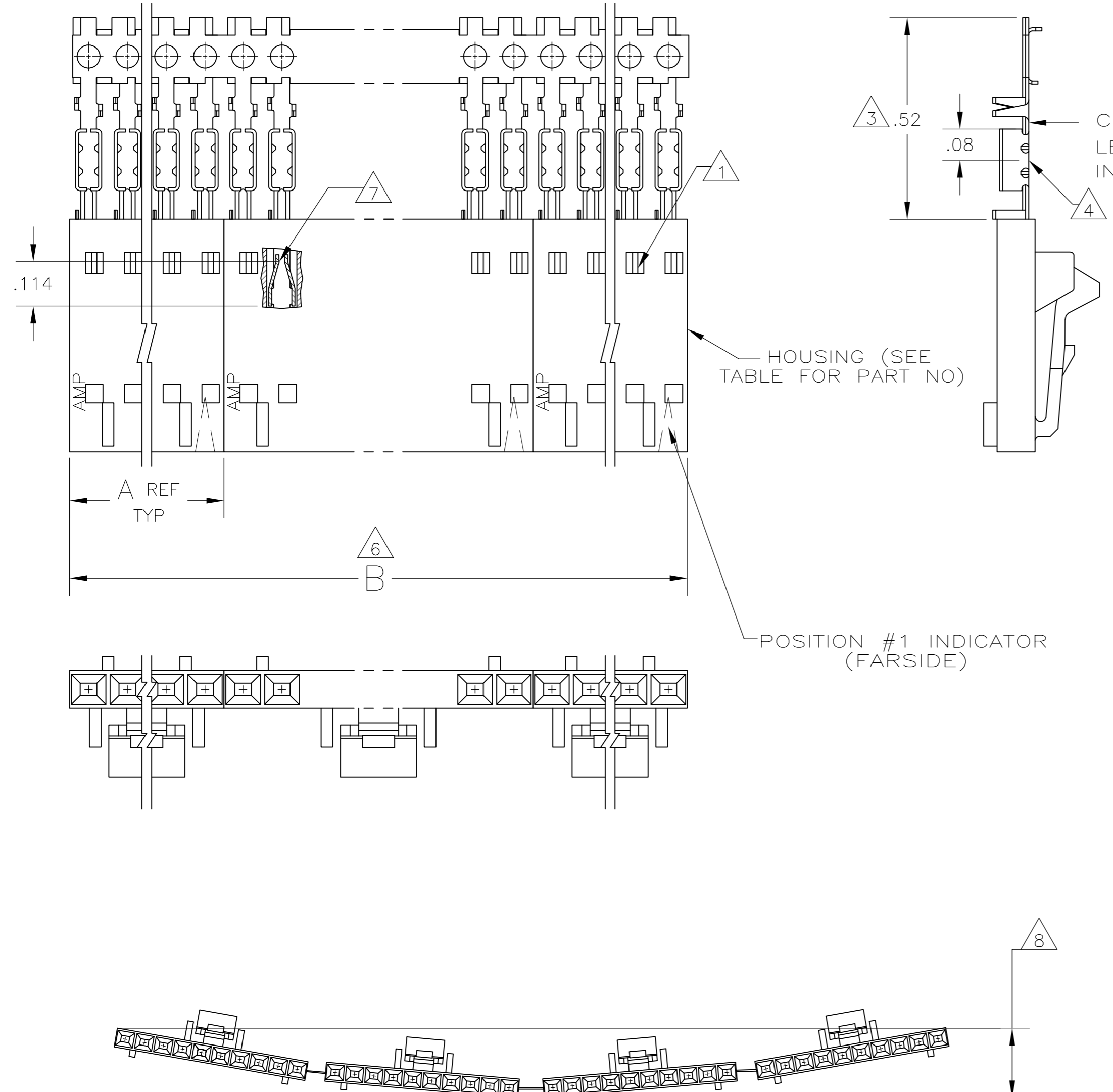


LOC		DIST		REVISIONS			
P	LTR	DESCRIPTION	DATE	DWN	APVD		
AD	00						
	N2	REVISED PER ECO-11-004587	11MAR11	RK	HMR		



CONTACT IDENTIFICATION LETTER "B" (LOCATED IN THIS AREA)

HOUSING (SEE TABLE FOR PART NO)

POSITION #1 INDICATOR (FAR SIDE)

- 1 CONTACTS ARE LATCHED INTO THE PRELOAD WINDOWS
- 2 USE WITH #22-#26 AWG WIRE SIZE, .054/.030 INSULATION DIAMETER, .015 MAXIMUM INSULATION THICKNESS
- 3 THE DIMENSION APPLIES WITH THE FORWARD PRELOAD STOP IN CONTACT WITH THE HOUSING SURFACE
- 4 POINT OF MEASUREMENT FOR PLATING THICKNESS
- 5 FOR INDIVIDUAL ASSEMBLIES SEE PART NUMBER 103644
- 6 ASSEMBLIES ARE JOINED BY THE CARRIER STRIP. ORDER QUANTITY REFLECTS TOTAL NUMBER OF INDIVIDUAL ASSEMBLIES REQUIRED. SEE TABLE FOR NUMBER OF ASSEMBLIES PER STRIP.
- 7 POINT OF MEASUREMENT FOR PLATING THICKNESS (INSIDE BEAMS)
- 8 MAXIMUM ALLOWABLE BOW OF ASSEMBLY NOT TO EXCEED .055.
- 9 .000015 GOLD IN THE CONTACT AREA. .000050-.000100 BRIGHT TIN-LEAD ON THE TERMINATION AREA. ALL OVER .000050 NICKEL.
- 10 .000015 GOLD IN THE CONTACT AREA. .000050-.000100 BRIGHT TIN ON THE TERMINATION AREA. ALL OVER .000050 NICKEL.
- 11 PRELIMINARY PART - NOT RELEASED FOR PRODUCTION.
- 12 .000015 GOLD IN THE CONTACT AREA. .000050-.000100 MATTE TIN ON THE TERMINATION AREA. ALL OVER .000050 NICKEL.
- 13 OBSOLETE PARTS: OBSOLETE CIS STREAMLINING PER D.RENAUD/D.SINISI

EXAMPLE: STRIP ASSEMBLY SCALE 2:1

THIS DRAWING IS A CONTROLLED DOCUMENT.		DWN	L A MAYER	11-4-86		TE Connectivity																					
DIMENSIONS: INCHES		CHK	P de Jong	11-12-86		NAME																					
TOLERANCES UNLESS OTHERWISE SPECIFIED:		APVD	P de Jong	11-12-86		RCPT ASSY, AMPMODU MTE, SINGLE ROW, .100 C/L, LATCHED & POLARIZED FOR #22-#25 AWG WIRE SIZE, STRIP FORM																					
<table border="0"> <tr><td>0 PLC</td><td>±</td><td>-</td></tr> <tr><td>1 PLC</td><td>±</td><td>-</td></tr> <tr><td>2 PLC</td><td>±</td><td>.02</td></tr> <tr><td>3 PLC</td><td>±</td><td>.005</td></tr> <tr><td>4 PLC</td><td>±</td><td>-</td></tr> <tr><td>ANGLES</td><td>±</td><td>-</td></tr> <tr><td>FINISH</td><td>±</td><td>-</td></tr> </table>		0 PLC	±	-		1 PLC	±	-	2 PLC	±	.02	3 PLC	±	.005	4 PLC	±	-	ANGLES	±	-	FINISH	±	-	PRODUCT SPEC		108-25034	
0 PLC	±	-																									
1 PLC	±	-																									
2 PLC	±	.02																									
3 PLC	±	.005																									
4 PLC	±	-																									
ANGLES	±	-																									
FINISH	±	-																									
MATERIAL		APPLICATION SPEC		114-25026			SIZE	CAGE CODE	DRAWING NO	RESTRICTED TO																	
HOUSING:		SEE TABLE		WEIGHT		A2 00779		C=103957		-																	
CUSTOMER DRAWING				SCALE		4:1		SHEET		1 of 2																	
										REV N2																	

THIS DRAWING IS UNPUBLISHED. RELEASED FOR PUBLICATION  
 © COPYRIGHT - By - ALL RIGHTS RESERVED.

LOC	DIST	REVISIONS					
AD	00	P	LTR	DESCRIPTION	DATE	DWN	APVD
		-	-	SEE SHEET 1	-	-	-

13 OBSOLETE	△12	2	2.40	1.198	1-104257-1	12	6-103957-1
	△12	2	2.20	1.098	1-104257-0	11	6-103957-0
	△12	2	2.00	.998	104257-9	10	5-103957-9
	△12	2	1.80	.898	104257-8	9	5-103957-8
	△12	2	1.60	.798	104257-7	8	5-103957-7
	△12	2	1.40	.698	104257-6	7	5-103957-6
	△12	4	2.39	.598	104257-5	6	5-103957-5
	△12	4	1.99	.498	104257-4	5	5-103957-4
	△12	5	1.99	.398	104257-3	4	5-103957-3
	△12	8	2.40	.298	104257-2	3	5-103957-2
	△12	10	2.00	.198	104257-1	2	5-103957-1
	△10	2	1.40	.698	104257-6	7	2-103957-0
	△11	△10	2	2.40	1.198	1-104257-1	12
△11	△10	2	2.00	.998	104257-9	10	1-103957-8
	△10	2	1.60	.798	104257-7	8	1-103957-7
	△10	4	2.39	.598	104257-5	6	1-103957-6
	△10	4	1.99	.498	104257-4	5	1-103957-5
	△10	5	1.99	.398	104257-3	4	1-103957-4
	△10	8	2.40	.298	104257-2	3	1-103957-3
	△10	10	2.00	.198	104257-1	2	1-103957-2
	△9	2	2.40	1.198	1-104257-1	12	1-103957-1
	△9	2	2.20	1.098	1-104257-0	11	1-103957-0
	△9	2	2.00	.998	104257-9	10	103957-9
	△9	2	1.80	.898	104257-8	9	103957-8
	△9	2	1.60	.798	104257-7	8	103957-7
	△9	2	1.40	.698	104257-6	7	103957-6
	△9	4	2.39	.598	104257-5	6	103957-5
	△9	4	1.99	.498	104257-4	5	103957-4
	△9	5	1.99	.398	104257-3	4	103957-3
	△9	8	2.40	.298	104257-2	3	103957-2
	△9	10	2.00	.198	104257-1	2	103957-1
PLATING	△6	B	A	HOUSING PART NUMBER	NO OF POSN	ASSEMBLY PART NUMBER ON STRIP	

THIS DRAWING IS A CONTROLLED DOCUMENT.

DWN	L A MAYER	11-4-86	<b>STE</b> TE Connectivity			
CHK	P de Jong	11-12-86				
APVD	P de Jong	11-12-86				
NAME	RCPT ASSY, AMPMODU MTE, SINGLE ROW, .100 C/L, LATCHED & POLARIZED FOR #22-#25 AWG WIRE SIZE, STRIP FORM					
DIMENSIONS: INCHES	TOLERANCES UNLESS OTHERWISE SPECIFIED:	PRODUCT SPEC	SIZE	CAGE CODE	DRAWING NO	RESTRICTED TO
	0 PLC ± - 1 PLC ± - 2 PLC ± .02 3 PLC ± .005 4 PLC ± - ANGLES ± -	108-25034	A2	00779	C=103957	-
MATERIAL	FINISH	APPLICATION SPEC	WEIGHT	SCALE	SHEET	REV
-	SEE TABLE	114-25026	-	1:1	2 OF 2	N2
CUSTOMER DRAWING						

103957

A

## X-ON Electronics

Largest Supplier of Electrical and Electronic Components

*Click to view similar products for [Headers & Wire Housings](#) category:*

*Click to view products by [TE Connectivity](#) manufacturer:*

Other Similar products are found below :

[95000-104TRLF](#) [10135584-644402LF](#) [DF62W-EP2022PCA](#) [95000-106TRLF](#) [DF62W-2022SCA](#) [DF62W-EP2022PC](#) [2203348](#) [DF62W-2022SC](#) [1084018](#) [1029039](#) [1084017](#) [802-10-012-10-002000](#) [1112640](#) [1112639](#) [891-007-9SS-BST1T](#) [000-34000](#) [0008550134](#) [0009482033](#) [0009507031](#) [57102-F02-18ULF](#) [57102-S06-03LF](#) [57202-S52-04LF](#) [PCN6-15S-2.5E](#) [0039019024](#) [58102-G61-06LF](#) [582553-1](#) [0009485154](#) [0009508121](#) [0022285053](#) [0050291907](#) [018731A](#) [LY20-4P-DT1-P1E-BR](#) [02.125.8002.8](#) [60101931](#) [60598-1 \(Cut Strip\)](#) [M1625-3R/100](#) [61062-3](#) [61082-181009](#) [CSU011177004](#) [636-1427](#) [638009-1](#) [641938-9](#) [641991-4](#) [644168-1](#) [644827-2](#) [647662-1](#) [65039-019ELF](#) [65692-001LF](#) [65781-018](#) [65781-047](#)