



ELECTRONICS, INC.
 44 FARRAND STREET
 BLOOMFIELD, NJ 07003
 (973) 748-5089

NTE238 Silicon NPN Transistor Color TV, Horizontal Output

Description:

The NTE238 is a silicon NPN horizontal deflection transistor in a TO3 type package designed for use in deflection circuits.

Features:

- $V_{CEX} = 1500V$
- Safe Operating Area @ $50\mu s = 20A, 400V$

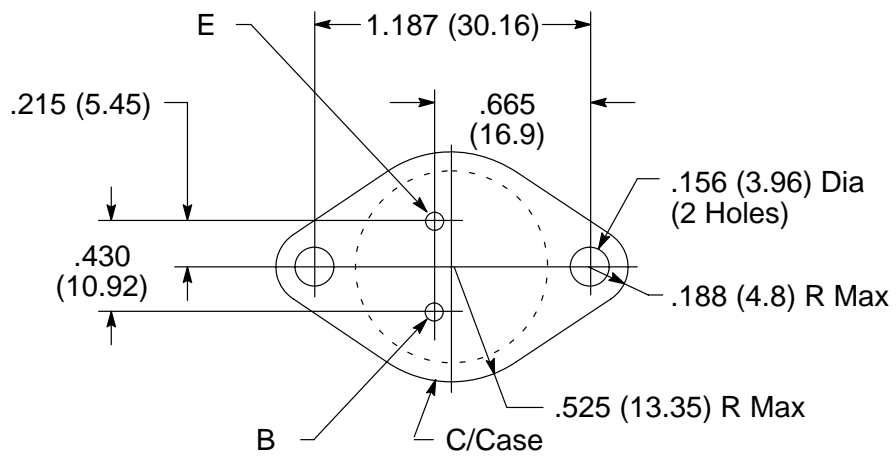
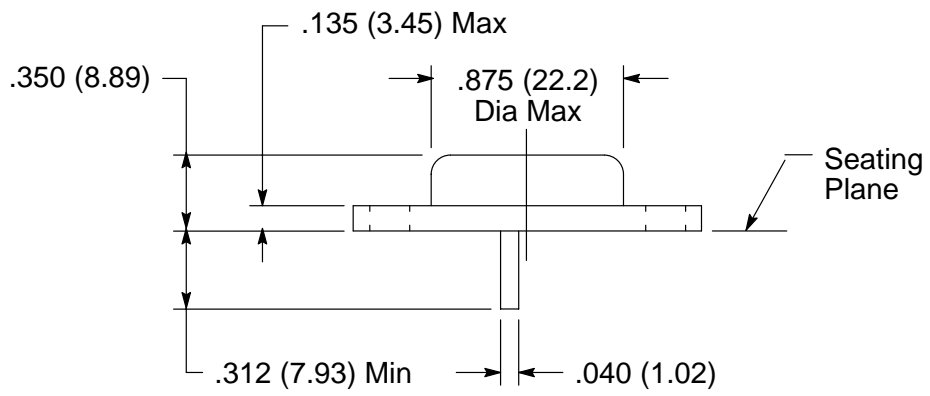
Absolute Maximum Ratings:

Collector–Emitter Voltage, V_{CEX}	1500V
Emitter–Base Voltage, V_{EB}	5V
Collector Current–Continuous, I_C	8A
Base Current–Continuous, I_B	4A
Emitter Current–Continuous, I_E	12A
Total Power Dissipation ($T_C = +25^\circ C$), P_D	100W
Derate above $25^\circ C$	0.8W/ $^\circ C$
Operating Junction Temperature Range, T_J	-65° to $+150^\circ C$
Storage Temperature Range, T_{stg}	-65° to $+150^\circ C$
Thermal Resistance, Junction–to–Case, R_{thJC}	1.25 $^\circ C/W$
Maximum Lead Temperature (Soldering Purposes, 1/8" from case for 5sec), T_L	$+275^\circ C$

Electrical Characteristics: ($T_C = +25^\circ C$ unless otherwise specified)

Parameter	Symbol	Test Conditions	Min	Typ	Max	Unit
OFF Characteristics						
Collector–Emitter Sustaining Voltage	$V_{CEO(sus)}$	$V_C = 50mA, I_B = 0$	750	–	–	V
Collector Cutoff Current	I_{CES}	$V_{CE} = 1500V, V_{BE} = 0$	–	–	0.25	mA
Emitter Cutoff Current	I_{EBO}	$V_{BE} = 5V, I_C = 0$	–	–	0.1	mA
ON Characteristics (Note 1)						
Collector–Emitter Saturation Voltage	$V_{CE(sat)}$	$I_C = 5A, I_B = 1A$	–	–	5.0	V
Base Emitter Saturation Voltage	$V_{BE(sat)}$	$I_C = 5A, I_B = 1A$	–	–	1.5	V
SWITCHING CHARACTERISTICS						
Fall Time	t_f	$I_C = 5A, I_{B1} = 1A, L_B = 8\mu H$	–	0.4	1.0	μs

Note 1. Pulse test: Pulse Width $\leq 300\mu s$, Duty Cycle = 2%.



X-ON Electronics

Largest Supplier of Electrical and Electronic Components

Click to view similar products for [Bipolar Transistors - BJT category](#):

Click to view products by [NTE manufacturer](#):

Other Similar products are found below :

[619691C](#) [MCH4017-TL-H](#) [MJ15024/WS](#) [MJ15025/WS](#) [BC546/116](#) [BC556/FSC](#) [BC557/116](#) [BSW67A](#) [HN7G01FU-A\(T5L,F,T](#)
[NJVMJD148T4G](#) [NSVMMBT6520LT1G](#) [NTE187A](#) [NTE195A](#) [NTE2302](#) [NTE2330](#) [NTE2353](#) [NTE316](#) [IMX9T110](#) [NTE63](#) [NTE65](#)
[C4460](#) [SBC846BLT3G](#) [2SA1419T-TD-H](#) [2SA1721-O\(TE85L,F\)](#) [2SA1727TLP](#) [2SA2126-E](#) [2SB1202T-TL-E](#) [2SB1204S-TL-E](#) [2SC5488A-](#)
[TL-H](#) [2SD2150T100R](#) [SP000011176](#) [FMC5AT148](#) [2N2369ADCSM](#) [2SB1202S-TL-E](#) [2SC2412KT146S](#) [2SC4618TLN](#) [2SC5490A-TL-H](#)
[2SD1816S-TL-E](#) [2SD1816T-TL-E](#) [CMXT2207 TR](#) [CPH6501-TL-E](#) [MCH4021-TL-E](#) [BC557B](#) [TTC012\(Q\)](#) [BULD128DT4](#) [JANTX2N3810](#)
[Jantx2N5416](#) [US6T6TR](#) [KSF350](#) [068071B](#)