



ELECTRONICS, INC.
 44 FARRAND STREET
 BLOOMFIELD, NJ 07003
 (973) 748-5089
<http://www.nteinc.com>

NTE490 MOSFET N-Ch, Enhancement Mode High Speed Switch TO92 Type Package

Absolute Maximum Ratings:

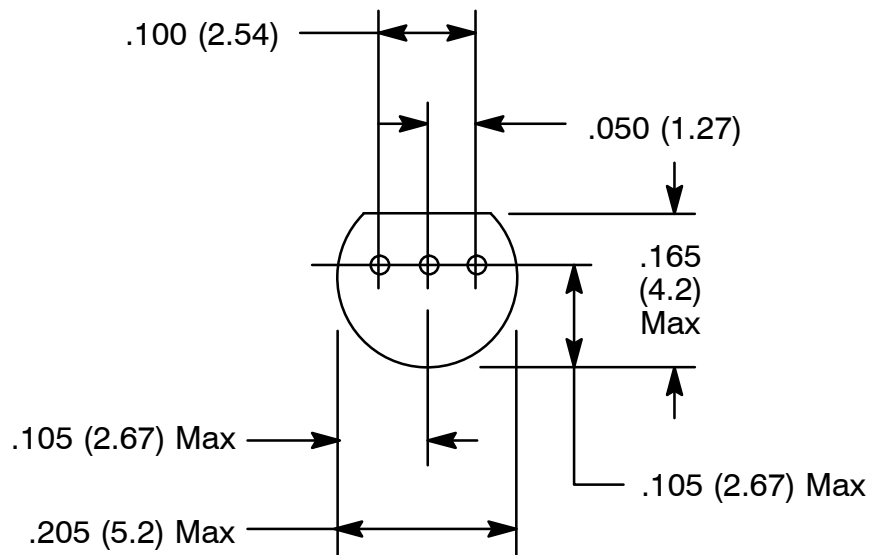
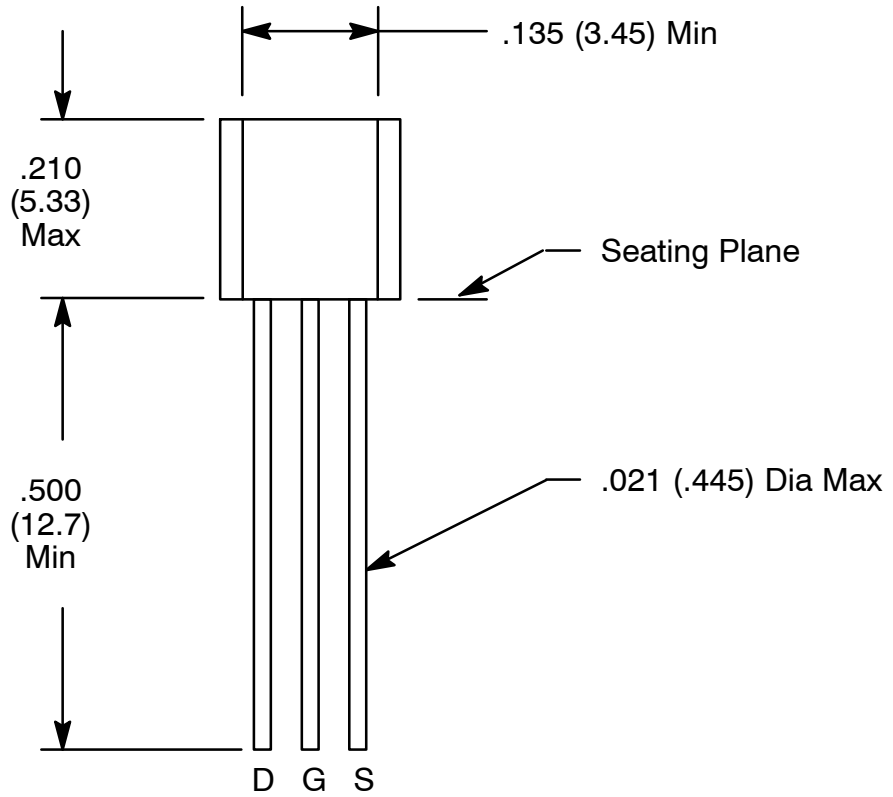
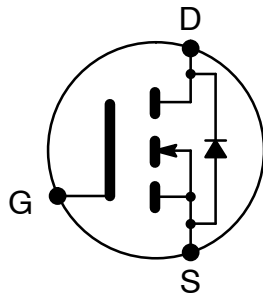
Drain-Source Voltage, V_{DS} 60V
 Gate-Source Voltage, V_{GS} $\pm 20V$
 Drain Current (Note 1), I_D 500mA
 Total Device Dissipation ($T_A = +25^\circ C$), P_D 350mW
 Operating Junction Temperature Range, T_J -55° to $+150^\circ C$
 Storage Temperature Range, T_{stg} -55° to $+150^\circ C$

Note 1. The Power Dissipation of the package may result in a lower continuous drain current.

Electrical Characteristics: ($T_A = +25^\circ C$ unless otherwise specified)

Parameter	Symbol	Test Conditions	Min	Typ	Max	Unit
OFF Characteristics						
Drain-Source Breakdown Voltage	$V_{(BR)DSS}$	$V_{GS} = 0, I_D = 100\mu A$	60	90	-	V
Gate Reverse Current	I_{GSS}	$V_{GS} = 15V, V_{DS} = 0$	-	0.01	10	nA
ON Characteristics (Note 2)						
Gate Threshold Voltage	$V_{GS(Th)}$	$V_{DS} = V_{GS}, I_D = 1mA$	0.8	2.0	3.0	V
Static Drain-Source ON Resistance	$r_{DS(on)}$	$V_{GS} = 10V, I_D = 200mA$	-	1.8	5.0	\pm
Drain Cutoff Current	$I_{D(off)}$	$V_{DS} = 25V, V_{GS} = 0$	-	-	0.5	$\leq A$
Forward Transconductance	g_{fs}	$V_{DS} = 10V, I_D = 250mA$	-	200	-	mmhos
Small-Signal Characteristics						
Input Capacitance	C_{iss}	$V_{DS} = 10V, V_{GS} = 0, f = 1MHz$	-	-	60	pF
Switching Characteristics						
Turn-On Time	t_{on}	$I_D = 200mA$	-	4	10	ns
Turn-Off Time	t_{off}	$I_D = 200mA$	-	4	10	ns

Note 2. Pulse Test: Pulse Width $\leq 300\mu s$, Duty Cycle $\leq 2\%$.



X-ON Electronics

Largest Supplier of Electrical and Electronic Components

Click to view similar products for [MOSFET](#) category:

Click to view products by [NTE](#) manufacturer:

Other Similar products are found below :

[614233C](#) [648584F](#) [MCH3443-TL-E](#) [MCH6422-TL-E](#) [FDPF9N50NZ](#) [FW216A-TL-2W](#) [FW231A-TL-E](#) [APT5010JVR](#) [NTNS3A92PZT5G](#)
[IRF100S201](#) [JANTX2N5237](#) [2SK2464-TL-E](#) [2SK3818-DL-E](#) [FCA20N60_F109](#) [FDZ595PZ](#) [STD6600NT4G](#) [FSS804-TL-E](#) [2SJ277-DL-E](#)
[2SK1691-DL-E](#) [2SK2545\(Q,T\)](#) [D2294UK](#) [405094E](#) [423220D](#) [MCH6646-TL-E](#) [TPCC8103,L1Q\(CM](#) [367-8430-0972-503](#) [VN1206L](#)
[424134F](#) [026935X](#) [051075F](#) [SBVS138LT1G](#) [614234A](#) [715780A](#) [NTNS3166NZT5G](#) [751625C](#) [873612G](#) [IRF7380TRHR](#)
[IPS70R2K0CEAKMA1](#) [RJK60S3DPP-E0#T2](#) [RJK60S5DPK-M0#T0](#) [APT5010JVFR](#) [APT12031JFLL](#) [APT12040JVR](#) [DMN3404LQ-7](#)
[NTE6400](#) [JANTX2N6796U](#) [JANTX2N6784U](#) [JANTXV2N5416U4](#) [SQM110N05-06L-GE3](#) [SIHF35N60E-GE3](#)