



ELECTRONICS, INC.
 44 FARRAND STREET
 BLOOMFIELD, NJ 07003
 (973) 748-5089
<http://www.nteinc.com>

NTE5461 thru NTE5468 Silicon Controlled Rectifier (SCR) 10 Amp, TO220

Description:

The NTE5461 through NTE5468 series silicon controlled rectifiers are designed primarily for half-wave AC control applications such as motor controls, heating controls, and power supplies; or wherever half-wave silicon gate-controlled, solid-state devices are needed. These devices are supplied in a TO220 type package.

Features:

- Glass Passivated Junctions and Center Gate Fire for Greater Parameter Uniformity and Stability
- Small, Rugged, Thermowatt Construction for Low Thermal Resistance, High Heat Dissipation, and Durability
- Blocking Voltage to 800 Volts

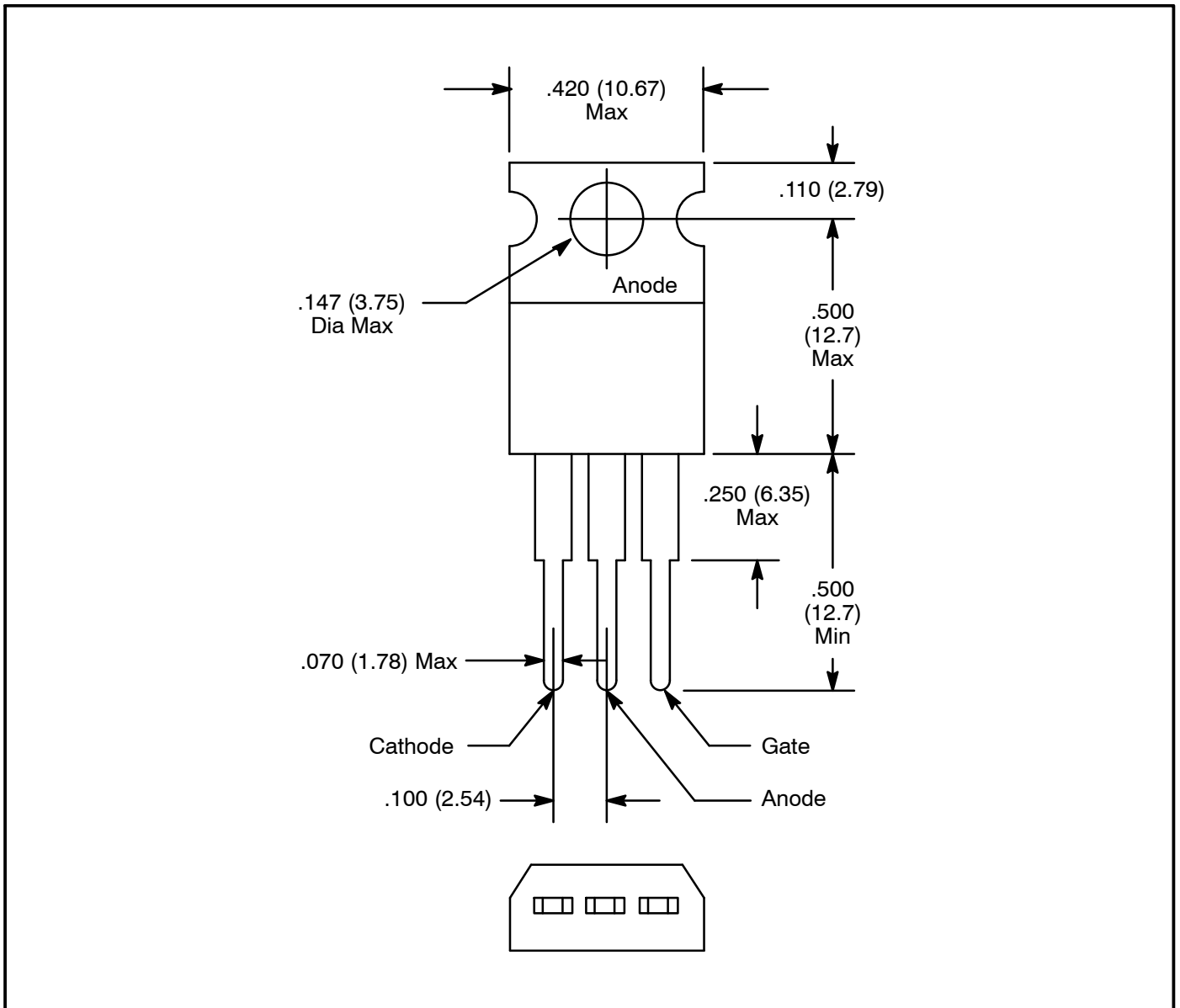
Absolute Maximum Ratings:

Peak Repetitive Reverse Voltage; Peak Repetitive Off-State Voltage (Note 1), V_{RRM} , V_{DRM}	
NTE5461	50V
NTE5462	100V
NTE5463	200V
NTE5465	400V
NTE5466	600V
NTE5468	800V
Non-Repetitive Peak Reverse Voltage; Non-Repetitive Off-State Voltage, V_{RSM} , V_{DSM}	
NTE5461	75V
NTE5462	125V
NTE5463	250V
NTE5465	500V
NTE5466	700V
NTE5468	900V
RMS Forward Current (All Conducting Angles, $T_C = +75^\circ\text{C}$), $I_{T(RMS)}$	10A
Peak Forward Surge Current (1 Cycle, Sine Wave, 60Hz, $T_C = +80^\circ\text{C}$), I_{TSM}	100A
Circuit Fusing Considerations ($T_J = -65^\circ$ to $+100^\circ\text{C}$, $t = 1$ to 8.3ms), I^2t	40A ² s
Forward Peak gate Power ($t \leq 10\mu\text{s}$), P_{GM}	16W
Forward Average Gate Power, $P_{G(AV)}$	500mW
Operating Junction Temperature Range, T_J	-40° to $+100^\circ\text{C}$
Storage Temperature Range, T_{stg}	-40° to $+150^\circ\text{C}$
Thermal Resistance, Junction-to-Case, R_{thJC}	2°C/W

Note 1. V_{DRM} and V_{RRM} for all types can be applied on a continuous DC basis without incurring damage. Ratings apply for zero or negative gate voltage. Devices shall not have a positive bias applied to the gate concurrently with a negative potential on the anode.

Electrical Characteristics: ($T_C = +25^\circ\text{C}$ unless otherwise specified)

Parameter	Symbol	Test Conditions	Min	Typ	Max	Unit	
Peak Forward or Reverse Blocking Current	I_{DRM} , I_{RRM}	Rated V_{DRM} or V_{RRM}	$T_C = +25^\circ\text{C}$	-	-	10	μA
			$T_C = +100^\circ\text{C}$	-	-	2	mA
Instantaneous On-State Voltage	V_T	$I_{TM} = 30A_{(Peak)}$, Pulse Width $\leq 1\text{ms}$, Duty Cycle $\leq 2\%$	-	1.7	2.0	V	
Gate Trigger Current (Continuous DC)	I_{GT}	$V_D = 12\text{V}$, $R_L = 30\Omega$	-	8	15	mA	
Gate Trigger Voltage (Continuous DC)	V_{GT}	$V_D = 12\text{V}$, $R_L = 30\Omega$	-	0.9	1.5	V	
Holding Current	I_H	Gate Open, $V_D = 12\text{V}$, $I_T = 150\text{mA}$	-	10	20	mA	
Gate Controlled Turn-On Time	t_{gt}	$V_D = \text{Rated } V_{DRM}$, $I_{TM} = 2\text{A}$, $I_{GR} = 80\text{mA}$	-	1.6	-	μs	
Circuit Commutated Turn-Off Time	t_q	$V_D = V_{DRM}$, $I_{TM} = 2\text{A}$, Pulse Width = $50\mu\text{s}$, $dv/dt = 200\text{V}/\mu\text{s}$, $di/dt = 10\text{A}/\mu\text{s}$, $T_C = +75^\circ\text{C}$	-	25	-	μs	
Critical Rate-of-Rise of Off-State Voltage	dv/dt	$V_D = \text{Rated } V_{DRM}$, Exponential Rise, $T_C = +100^\circ\text{C}$	-	100	-	$\text{V}/\mu\text{s}$	



X-ON Electronics

Largest Supplier of Electrical and Electronic Components

Click to view similar products for [SCRs category](#):

Click to view products by [NTE manufacturer](#):

Other Similar products are found below :

[NTE5428](#) [NTE5448](#) [NTE5457](#) [NTE5511](#) [T1500N16TOF VT](#) [T720N18TOF](#) [T880N14TOF](#) [T880N16TOF](#) [TS110-7UF](#) [TT104N12KOF-A](#)
[TT104N12KOF-K](#) [TT162N16KOF-A](#) [TT162N16KOF-K](#) [TT330N16AOF](#) [VS-16RIA100](#) [VS-22RIA20](#) [VS-2N5206](#) [VS-2N685](#) [VS-](#)
[40TPS08A-M3](#) [VS-ST230S12P1VPBF](#) [057219R](#) [CLB30I1200HB](#) [T1190N16TOF VT](#) [T1220N22TOF VT](#) [T201N70TOH](#) [T830N18TOF](#)
[TD92N16KOF-A](#) [TT250N12KOF-K](#) [VS-2N692](#) [VS-2N689](#) [VS-25RIA40](#) [VS-16RIA120](#) [VS-10RIA120](#) [VS-30TPS08PBF](#) [NTE5427](#)
[NTE5442](#) [VS-2N690](#) [VS-ST300S20P0PBF](#) [TT251N16KOF-K](#) [VS-22RIA100](#) [VS-16RIA40](#) [CR02AM-8#F00](#) [VS-ST110S12P0VPBF](#)
[TD250N16KOF-A](#) [VS-ST110S16P0](#) [VS-10RIA10](#) [VS-16TTS08-M3](#) [TS110-7A1-AP](#) [T930N36TOF VT](#) [T2160N24TOF VT](#)