



F&F Filipowski sp. j
ul. Konstytucyjna 79/81
95-200 Pabianice, POLAND
tel/fax 48 42 2270974
e-mail: fif@fif.com.pl

TR-24 MAIN TRANSFORMER



www.fif.com.pl

F&F products are covered by an 24 months warranty from date of purchase

PURPOSE

Application: power supply of electrical and electronic devices which do not require a stable and properly filtered supply voltage, regardless of mains voltage fluctuations.

FUNCTIONING

TR has a single electronic thermal protection fuse which secure transformer before crossing the temperature 115 °C.

ASSEMBLY

1. Take OFF the power.
2. Power cable connect to input joints 3-4 of transformer.
3. Receiver connet to output joints 9-10 of transformer.

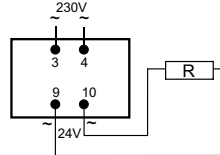
ATTENTION!

For better protection of the receiver on the secondary side connect in circuit the current fuse in series with a value of 820mA.

TECHNICAL DATA

isupply	230VAC
output voltage	24VAC
	27,5VAC for I=0
output current	0,5A
output power	12VA
therm protection	thermal fuse
working temperature	-10+45°C
power consumption	1,1W
weight	433g
connection	screw terminals 2,5mm ²
dimensions	3 modules (52,5mm)
fixing	on rail TH-35

WIRING DIAGRAM



A090811

X-ON Electronics

Largest Supplier of Electrical and Electronic Components

Click to view similar products for [Power Transformers](#) category:

Click to view products by [F&F](#) manufacturer:

Other Similar products are found below :

[1-1672275-3](#) [A41-43-20A20](#) [DST5-120B39](#) [14A-56-36B42](#) [EN2997SE61808F8](#) [9-1611461-2](#) [29768](#) [1654308-1](#) [170R](#) [ST2-12B42](#) [ST3-12B5](#) [ST6118T-R](#) [PE-68421NL](#) [PL2.5-12-130B-C](#) [PoE4W3x5.0-R](#) [POE7W3X3.3-R](#) [4000-20C02K999](#) [4001-09W15AE777](#) [48RO-5000G-SIL](#) [TRA-0130-R](#) [XON7-15/2](#) [47045010](#) [1-1611462-6](#) [1-1611760-0](#) [EN2997SE61808F9](#) [OPT110F-EAS00004AU](#) [XON25-9/24](#) [XON01349](#) [XON01200](#) [XDCA001/INER01](#) [PE-68414NL](#) [F-91X](#) [F-29U](#) [DST4-16B10](#) [DP241-8-24A55](#) [DP241-5-10A21](#) [P-8577](#) [T50-24M3](#) [1-1672277-2](#) [1-1672277-0](#) [1-1672275-5](#) [1-1672275-0](#) [4000-01V18BC999](#) [PC-24-180B18](#) [750315837](#) [750315125](#) [POE13W2VERS-R](#) [PA2380NL](#) [14A-10-12B9](#) [PE-68411NL](#)