

M81714/65 Sealed In-Line Splices

SJS Series II Single and Double

Socket Junction Splices



Operating Range

Temperature:
-65°C to 200°C

Insulation Resistance:
5000 Megaohms Min.

Dielectric Withstanding Voltage:
1500 VRMS at Sea Level
200 VRMS at 100,000 ft.

Vibration & Shock:
Per MIL-T-81714
Paragraph 3.5.5 & 3.5.8

Current Rating:
13 Amps (Size 16)
7.5 Amps (Size 20)
5 Amps (Size 22)

Materials

Insulator Body:
Polyetherimide per ASTM-D-5205

Grommet:
Silicone Rubber per A-A-59588

Internal Contact:
Copper Alloy, Gold Finish
Accordance with MIL-G-45204

Product Description

Series II In-Line Splices are available in single and double configurations in sizes 16, 20, and 22 AWG. These M81714/65 Splices use the same advanced polyetherimide body, one-piece bus assembly and construction as Amphenol Pcd's other M81714 connectors.

Single SJS Splices

| | Military P/N | APCD P/N | Ø Diameter |
|--|----------------|-----------|------------|
| | M81714/65-16-1 | SJS316700 | .324 Max |
| | M81714/65-20-1 | SJS320700 | .290 Max |
| | M81714/65-22-1 | SJS322700 | .230 Max |

Sealed Splice Contacts

| In-Line Splice | Contact |
|----------------|---------------|
| M81714/65-16-1 | M39029/22-193 |
| M81714/65-20-1 | M39029/22-192 |
| M81714/65-22-1 | M39029/22-191 |
| M81714/65-16-2 | M39029/22-193 |
| M81714/65-20-2 | M39029/22-192 |
| M81714/65-22-2 | M39029/22-191 |

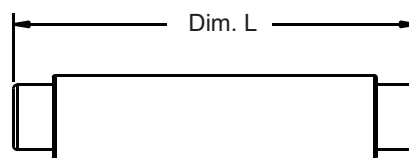
Double SJS Splices

| | Military P/N | APCD P/N | A | B | C |
|--|----------------|-----------|----------|----------|----------|
| | M81714/65-16-2 | SJS316701 | .548 Max | .304 Max | .180 Max |
| | M81714/65-20-2 | SJS320701 | .481 Max | .271 Max | .150 Max |
| | M81714/65-22-2 | SJS322701 | .384 Max | .204 Max | .120 Max |

Splice Dimensions

SJS Single Splice

Side View

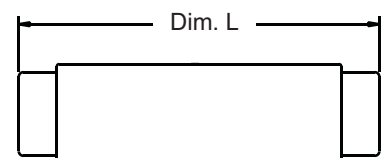


Wire Size Dimension L

| | |
|---------|-----------|
| Size 16 | 1.452 Max |
| Size 20 | 1.434 Max |
| Size 22 | 1.310 Max |

SJS Double Splice

Side View



Wire Size Dimension L

| | |
|---------|-----------|
| Size 16 | 1.428 Max |
| Size 20 | 1.428 Max |
| Size 22 | 1.322 Max |

X-ON Electronics

Largest Supplier of Electrical and Electronic Components

Click to view similar products for [In-Line Junction Modules](#) category:

Click to view products by [Amphenol](#) manufacturer:

Other Similar products are found below :

[00111975102](#) [6131-202-1358P](#) [6131-207-1158P](#) [6131-207-1558P](#) [6131-207-1758P](#) [6131-209-2558P](#) [6131-217-1758P](#) [6131-258-1958P](#)
[6131-261-2358P](#) [6131-264-1358P](#) [6134-209-19149](#) [6408-203V-09273](#) [M81714/12-20D-2-LC](#) [D38999/26FJ43SB](#) [87.200.2201.3](#)
[87.210.2204.3](#) [87.210.2211.3](#) [88083-10-6PN](#) [88083-10-6PN-L/C](#) [88083-10-6SN](#) [88083-10-6SN-LC](#) [88083-12-10PN-L/C](#) [88083-14-15SN-LC](#)
[88083-14-15SW-L/C](#) [88083-14-19SN](#) [88083-14-19SN-LC](#) [88083-14-4PN-LC](#) [88083-14-5SN-LC](#) [88083-16-26SN-LC](#) [88083-16-8PN-LC](#)
[88083-18-8SN-LC](#) [88083-20-41PN-LC](#) [1210230271](#) [1210640168](#) [1210641064](#) [S53209NR051](#) [M81714/12-22D-2-LC](#) [TJSE20535](#)
[TJSE20551](#) [TJSE20706](#) [YCTJ920E12NC098000](#) [6131-202-2358P](#) [6131-205-2558P](#) [6131-208-2558P](#) [6131-258-2158P](#) [E162N2N0506R](#)
[M817142DA1](#) [C81311N21](#) [CA3108E16S-1PA206](#) [87.200.2205.3](#)