

FREQUENCY RANGE	OVERALL STABILITY OPTIONS
400kHz ~ 160MHz	9710A = 25PPM 9710B = 50PPM 9710C = 100PPM

Note 1 Stability options are inclusive of: Calibration Tolerance at 25°C, Operating Temperature Range, Supply Voltage Change, Load Change, Ageing, Shock & Vibration.

Parameter	Code	Value	Unit	Remarks	
Storage Temperature Range	Tstg	-65 to +125	°C		
Operating Temperature Range	Top	0 to +70	°C		
Input Voltage	V _{cc}	+5	V DC	10%	
Max Input Current	ICC	20	mA Max	500 kHz to 20MHz	
		40		20.1MHz to 80MHz	
		50		80.1MHz to 160MHz	
Duty Ratio	SY	50:50	10%	%	At 50% V _{DD}
"0" Level	V _{OL}	0.5	V DC	Max	
"1" Level	V _{OH}	4.5	V DC	Min	
Max Rise/Fall Time	Tr:Tf	10	nS Max	500 kHz to 20MHz	
		6		20.1MHz to 70MHz	
		4		70.1MHz to 100MHz	
Start-Up Time	TSTART	5	mS		
Fan-Out (Load)		15pF Min 1-10 TTL		HCmos TTL	

MECHANICAL

Drop Test - Drop Module onto a hard wooden surface from 20cm 3 times

Shock Test - 1500g (Peak) 0.35mS (1/2Sine Wave) 5 Times

Vibration Test - Vibrations with an amplitude of 3mm and a sweep from 10-55 Hz duration 1 minute shall be applied for 2 hours in each of the x,y, & z axes

ENVIRONMENTAL

Solder Heat - Immerse pins to within 1mm of glass stand-offs in solder bath of 280°C ±10°C for 10 secs

Life Test - After exposure to +125°C (Power Applied) for 1000 Hrs

Cold Resistance - After exposure to -40°C for 2 hrs

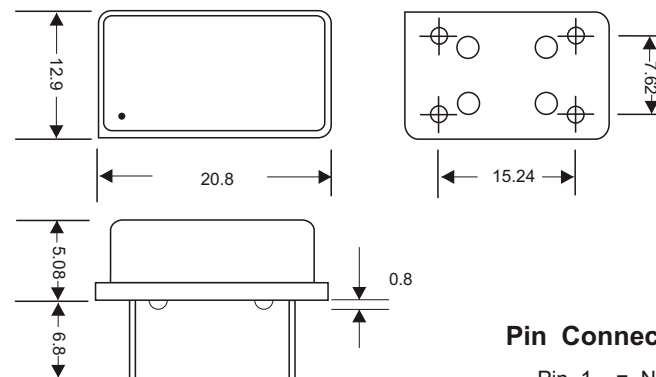
Humidity - After exposure to +40°C 90-95% RH for 48 Hrs

Thermal Shock - After 10 cycles of exposure to -55°C & 125°C with 10mins exposure at each extreme

Fine Leak - Helium leak detector, pressure 5kg.f/cm³ for 2 Hrs, leakage less than 1 x 10⁻⁸ Atm.cc/Sec

TITLE: AEL 9710 Series Oscillator 14-Pin DIL UNIVERSAL O/P (Hcmos & TTL) 400kHz to 160MHz

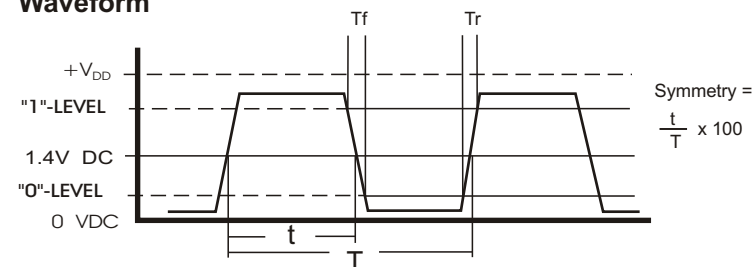
AEL Stock Code	Issue Number	Issue Date	Approved
	4	17/06/97	GR



Pin Connections

Pin 1 = NC
Pin 7 = Ground
Pin 8 = Output
Pin 14 = +V DC

Waveform



AEL Crystals Limited
www.aelcrystals.co.uk



Module 'D' Airtech 2
Jenner Road, Crawley
W. Sussex. RH10 2GA

Tel: 01293 524245
Fax: 01293 524888

© Not to be reproduced without permission of AEL Crystals Ltd

X-ON Electronics

Largest Supplier of Electrical and Electronic Components

Click to view similar products for [ael manufacturer](#):

Other Similar products are found below :

[O16M000000L021](#) [X9M830400L035](#) [O25M000000L684](#) [O100M000000L010](#) [O16M000000L682](#) [O64M000000L153](#) [O20M000000L046](#)
[O25M000000L063](#) [X14M000000L001](#) [X32K768L102](#) [O25M000000L059](#) [X5M000000L001](#) [X9M830400L152](#) [X4M194304L056](#)
[X50M000000L001](#) [X12M000000L188](#) [O3M686400L120](#) [X4M608000L075](#) [O32M000000L097](#) [O40M000000L125](#) [O40M000000L126](#)
[O4M000000L638](#) [X15M000000L002](#) [O4M000000L134](#) [O20M000000L676](#) [O8M000000L166](#) [X307K200L001](#) [X40M000000L104](#)
[O8M000000L642](#) [E3SB16.0000F09G11AE](#) [C8M000000L004](#) [X32K768S021](#) [X1M843200L010](#) [C4M000000L001](#) [X19M660800L307](#)
[X20M000000L010](#) [X32K768S019](#) [X7M372800L027](#) [O10M000000S023](#) [X32K768L009](#) [C8M000000S014](#) [C16M000000L003](#)
[X32K768L104](#)