



Date  
02/04/04

Drn.By  
Vince

Title  
1000V MODULAR FUSED PROBES KIT

ISSUE No.

1

02/04/04

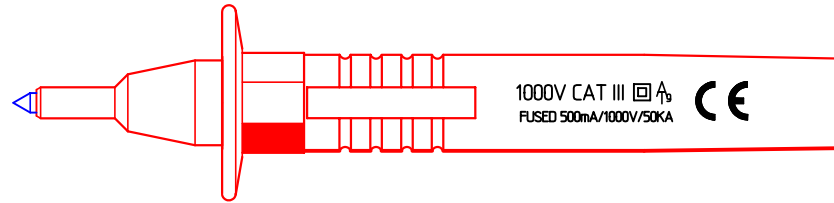
Part No.  
**134255 FAR**

This drawing is not to be disclosed to a third party without the authority from the company.©

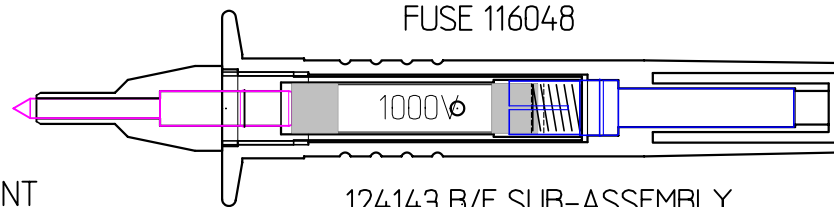
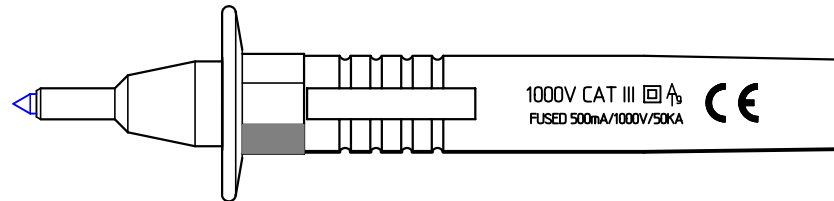
Scale  
1:1

IEC 1010 COMPLIANT RATING:  
1000 VOLTS CAT III AS FUSE AMPS MAX. POL DEG. 2

FARNELL \*\*\*-\*\*\*

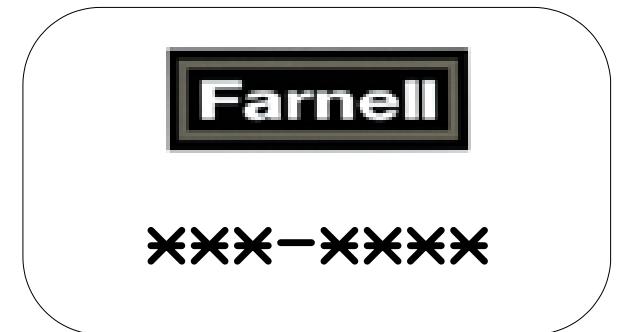


1No. RED & BLACK OEM 121272  
OEM PUSH-ON FUSE PRODS



124140 FRONT  
(113371 + 103141)  
BODY + CONTACT

FUZE 116048  
124143 B/E SUB-ASSEMBLY  
(113384+103147+111009 )  
(124144 S/A)  
BODY+CONTACT+SPRING



ASSEMBLY JIG NUMBERS  
-----J-----J-----  
-----J-----J-----

PACKAGING  
POLYBAG: 111514  
Label: As Above

PRINTING AS ILLUSTRATED

TOLERANCES  
CABLE LENGTHS +/- 5%

DO NOT SCALE.  
ALL DIMENSIONS IN mm.

## **X-ON Electronics**

Largest Supplier of Electrical and Electronic Components

*Click to view similar products for [silvertronic](#) manufacturer:*

Other Similar products are found below :

[134255](#) [129246](#) [134341](#) [129245](#) [131009/RA](#) [134328](#)