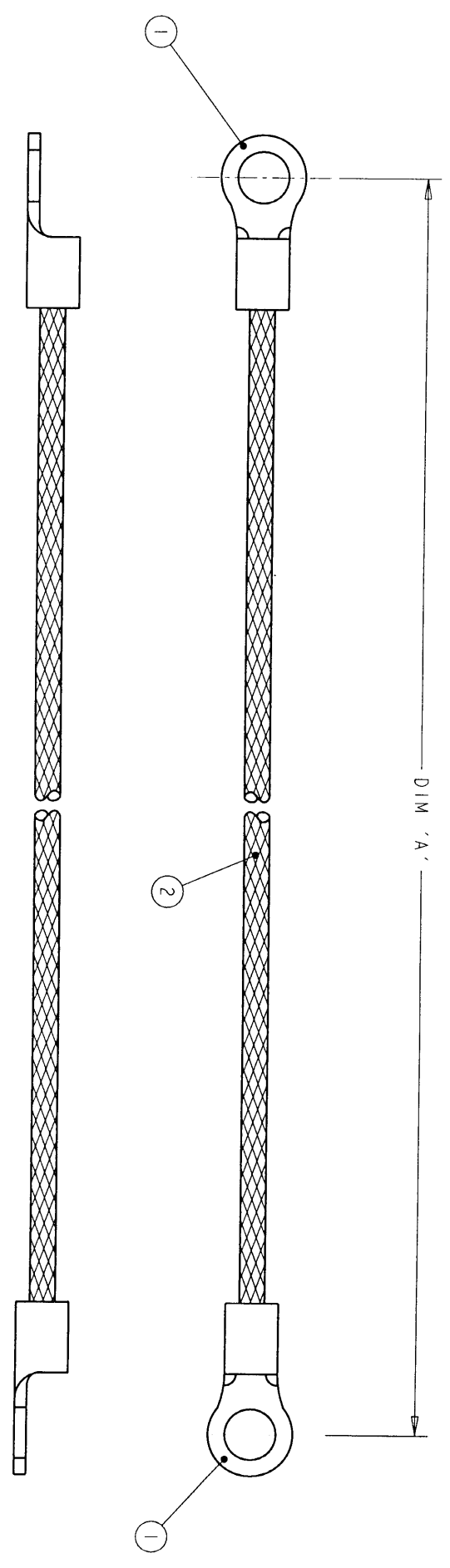


ITEM NO	PART NUMBER	DESCRIPTION	QTY / ASSY
1	32186-0	TERMINAL RING TONGUE / 16-14 AWG	2
2	1337713-2	METTEX BRAIDED CABLE - 1.13mm ²	A/R

REVOLUTIONS		DATE	DWN	APVD
P	TR	DESCRIPTION		
1		FIRST ISSUE	02JAN01	RC JJ



200 ±5	1337667-3
150 ±5	1337667-2
100 ±5	1337667-1
DIM 'A'	TYCO PART NUMBER

THIS DRAWING IS UNPUBLISHED. RELEASED FOR PUBLICATION. 20
 COPYRIGHT 20 BY TYCO ELECTRONICS CORPORATION. ALL RIGHTS RESERVED.

TYCO ELECTRONICS CORPORATION
 1.13mm² METTEX BRAIDED CABLE - 1.13mm²

TYCO
 Electronics
 AMP of Great Britain Ltd.
 Stannore, Middlesex, HA7 4BS.

DATE: 02JAN2001
 DWN: R. CHURCHILL
 APVD: D. CHICK

PRODUCT SPEC: JEWELL
 APPLICATION SPEC: -
 WEIGHT: -

SIZE: A3
 CAGE CODE: 00779
 DRAWING NO: 1337667

SCALE: NTS
 SHEET: 1 OF 1
 REV: -

CUSTOMER DRAWING

353 2872 / 2884 / 2896

X-ON Electronics

Largest Supplier of Electrical and Electronic Components

Click to view similar products for te connectivity manufacturer:

Other Similar products are found below :

[570416-000](#) [CLTEQ-M81CE-SSRELAY-4-20V](#) [D38999/24FJ4AN](#) [358838-000](#) [4-1195131-0](#) [650069-000](#) [SMD100-2](#) [CB-1022B-78](#)
[RM707012](#) [RP410012](#) [MMS42](#) [1-640426-8](#) [2EDL4CM](#) [DTS20W19-11PD-3028-LC](#) [RM202615](#) [NC6-P104-06](#) [MSPS103B](#) [DTS26F21-41AE](#) [DTS26F21-41PE-LC](#) [DTS26F21-11SE-3028-LC](#) [1932144-1](#) [293545-4](#) [LVR125S](#) [MS27466T25F4PB](#) [CKB-38-78010](#)
[1206SFF150F/63-2](#) [D38999/20JB35HA](#) [D38999/24WJ20PA](#) [1754138-1](#) [TE1500A2R2J](#) [DTS24F25-29PC-3028-LC](#) [D38999/24WG11HA](#)
[D38999/24WG11HN](#) [MS27467T21F11H](#) [DJT16E21-11HA](#) [1206SFH150F/24-2](#) [DTS24F19-11SC-3028-LC](#) [DTS24F21-41HN-LC](#)
[DTS24F21-41AN](#) [DTS24F21-41PN-LC](#) [MS27467T21F35J](#) [MS27467T21F11J](#) [MS27467T21F16H-LC](#) [MS27467T21F35H](#)
[MS27467T21F41H-LC](#) [DJT16E21-11PA-LC](#) [DJT16E21-11HA-LC](#) [DJT16E21-11AA](#) [MS27467T21B11JA](#) [DJT16E21-11JA](#)