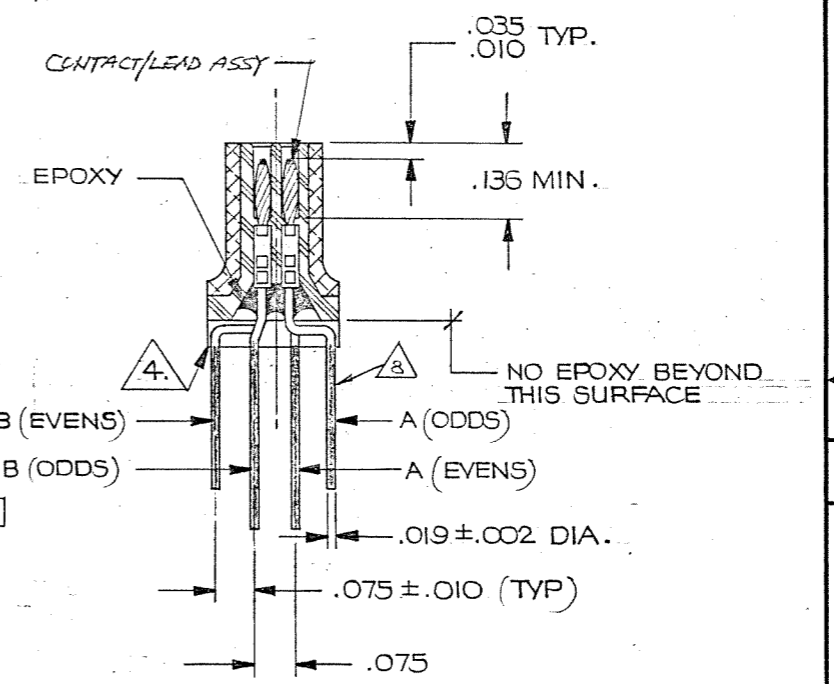
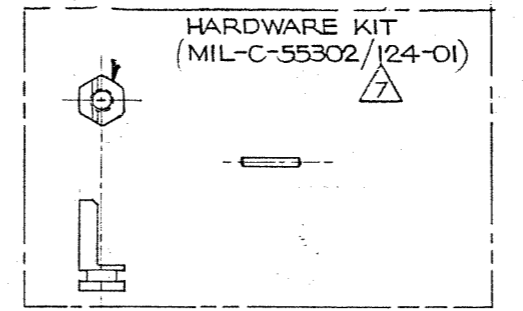
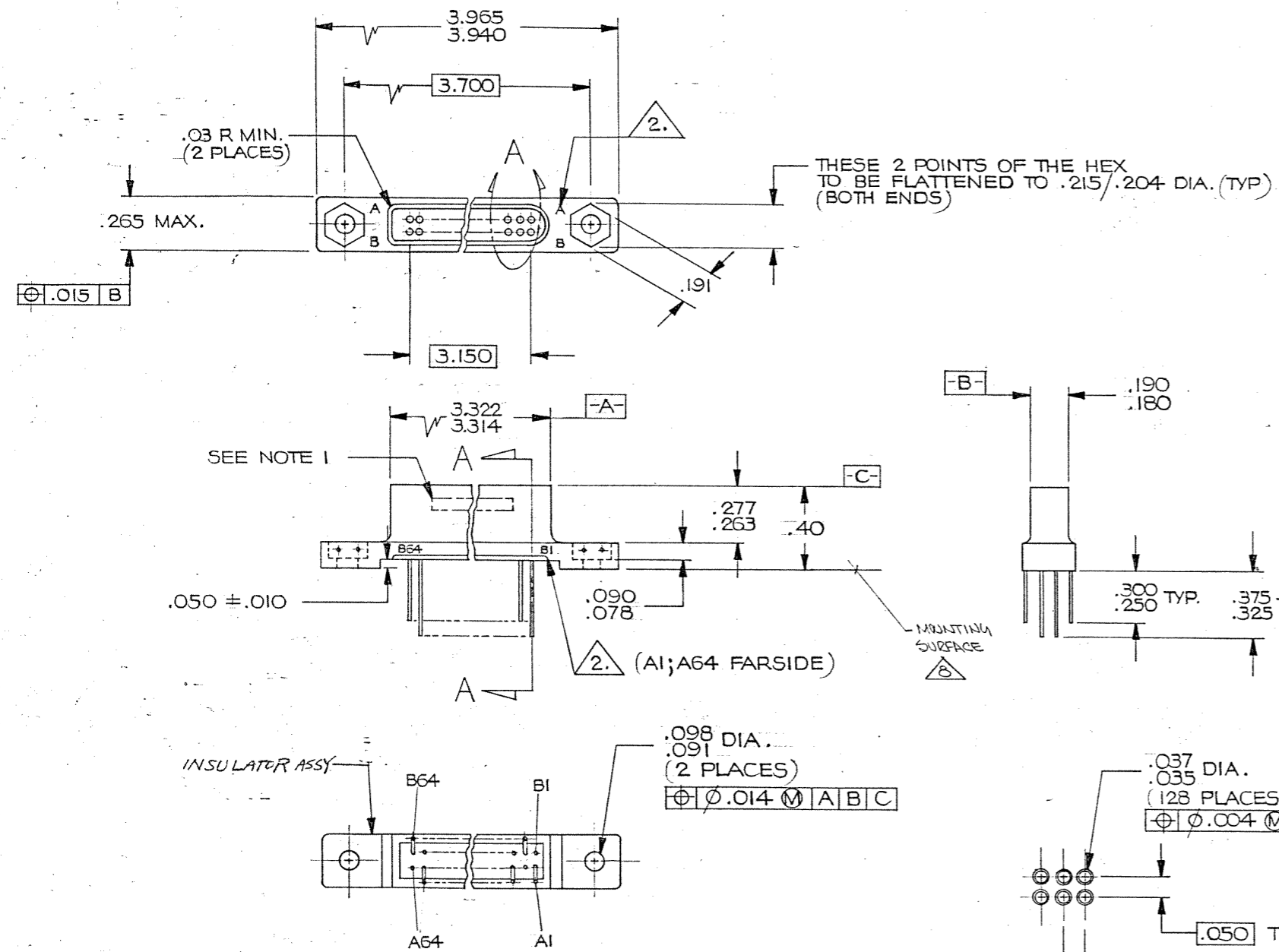


REVISIONS					
ZONE	LTR	ECN	DESCRIPTION	DATE	APPROVED
	C	30911	REVISED AND REDRAWN ORIG. RELEASED BY L.M.(5.1.87)	7/10/87	
	D	30959	UPDATE REV. LETTER	8/28/87	
	E	31354	UPDATE REV LETTER	4/2/88	
	F	31455	ADDED TINNING INSTRUCTION	4-22-88	
	G	32510	REV.LTR UPDATE	9/5/88	
	H	33712	TITLE UPDATED SEE ECN	3/14/91	
	J	38602	GENERAL UPDATE	2/12/99	
	K	39012	UPDATE REV LETTER	6-4-99	



- NOTES: (UNLESS OTHERWISE SPECIFIED)
1. MARK PER T1S.
 2. CAVITY IDENT AS SHOWN, BLACK CHARACTERS, IN ACCORDANCE WITH MIL-STD-1285.
 3. FORM TERMINAL WIRES AS SHOWN. NO SCRATCHES EXPOSING BASE METAL PERMITTED ON WIRES AFTER FORMING.
 4. THE 90° BEND IN THE TERMINAL SHALL NOT EXTEND BELOW THE PLANE OF THE MOUNTING FLANGE.
 5. Q.A. X-RAY REQUIREMENTS: (QUAL 1/2 REQUAL UNITS ONLY)
REPRESENTATIVE SAMPLE CONNECTORS SHALL BE X-RAYED BY THE WET FILM PROCESS TO PRODUCE 1 TO 1 CONTACT IMAGES. TWO DIFFERENT LATERAL IMAGES SHALL BE TAKEN AT ± 26.5° INCIDENT ANGLES SO AS TO VIEW BOTH ROWS OF CONTACTS SIMULTANEOUSLY IN EACH IMAGE. THE DEVELOPED FILM SHALL BE INSPECTED AT 10 POWER MINIMUM MAGNIFICATION FOR PROPER PIN BUNDLE 1/2 TERMINAL WIRE INSERTION DEPTH.
 6. MATES W/ CONNECTORS SPECIFIED IN MIL-C-55302/121.

- NOTES: (CONTINUED)
7. TWO POLARIZING KEYS AND FOUR RETAINING PINS ARE SUPPLIED BUT NOT ASSEMBLED. HARDWARE SHALL BE SEALED IN A CLEAR POLY BAG, IDENTIFIED "MIL-C-55302/124-01", DATE CODE "98278" PACKAGED ALONG WITH THE CONNECTOR.
 8. LEADS TINNED AS SHOWN (TINNING MAY GO "UP" BEYOND THE MOUNTING SURFACE)

DETAIL A

SECTION A-A

Tyco Dwg 2-1532018-5
Micro P/N 095-0087-7113

QTY REQD	CODE IDENT	PART OR IDENTIFYING NO.	NOMENCLATURE OR DESCRIPTION		
PARTS LIST					
UNLESS OTHERWISE SPECIFIED DIMENSIONS ARE IN INCHES TOLERANCES ARE: FRACTIONS DECIMALS ANGLES ± .XX ± .02 ± .XXX ± .005			CONTRACT NO.		MALCO A MICRODOT COMPANY, INC. 220 PASADENA AVE., SO. PASADENA, CALIF. 91030 PROD. CODE 844 CODE CDM
MATERIAL		APPROVALS	DATE	CONNECTOR, PLUG, METAL SHELL MCEMI-128LZ	
FINISH		DRAWN L. MATEO	6/22/87	MIL-C-55302/120	
NEXT ASSY		CHECKED M. SHIMAWA	7-10-87	SIZE C CODE IDENT NO. 98278 DRAWING NO. 095-0087-7113	
USED ON		PR. ENG. M. SHIMAWA	7-10-87	SCALE NONE SHEET 1 OF 1	
APPLICATION		DO NOT SCALE DRAWING			

X-ON Electronics

Largest Supplier of Electrical and Electronic Components

Click to view similar products for [D-Sub Standard Connectors](#) category:

Click to view products by [TE Connectivity](#) manufacturer:

Other Similar products are found below :

[DCM37S732N](#) [DAM15P500](#) [DEV09S364GTLF](#) [DEM09P032N](#) [DDM50P732N](#) [DAM15S332N](#) [173109-2218](#) [173109-2466](#) [173109-2436](#)
[173109-2435](#) [56F706-005-LI](#) [56F711-015](#) [015-0341-000](#) [015-0372-008](#) [015-8544-011](#) [017041-0005](#) [020419-0104](#) [012-0515-000](#) [012-9507-](#)
[034](#) [012-9507-114](#) [012-9534-001](#) [020745-0008](#) [609-25P](#) [M24308/2-23Z](#) [M243082310F](#) [M243082410F](#) [M243082411F](#) [M24308/4-21](#)
[CT1A18-11PSA206](#) [CT1N36-5SC](#) [CT2-16S-17PS](#) [CT2-20-15PCAU](#) [CT2-24-12PS](#) [CT2-24-28PSF127A206](#) [CT2-32-9PC](#) [CT6F9767-14-4-](#)
[14S-5PC](#) [CT6FA10SL-4PS](#) [CT7-18-10SC](#) [CT7-18-10SCAU](#) [CT7-18-12SCAU](#) [CT7-18-1PC](#) [CT7-18-1PCAU](#) [CT7-18-21SCAU](#) [M83513/01-](#)
[FC](#) [M83723/76W24619 L/C](#) [M85049/48-3-2F](#) [69001-865](#) [6STD09PCM99B70X](#) [6STD09SCM99B30X](#) [6STD09SCT99S40X](#)