

UNICASE

[Home Page](#)[E-Mail Us](#)[Catalogue PDF](#)[Get a Catalogue](#)[Get a Drawing](#)[Get a Price](#)[Get a Quote](#)[Customising](#)[IP Ratings](#)[Colour Chart](#)[Ordering Info](#)[Order Form](#)[Distributors](#)[☎ 01489 583858](#)[☎ 01489 583836](#)**FEATURES:**

- Aluminium instrument enclosures
- Robust and versatile design
- Six standard models and four slimline models
- Simple and fast assembly
- Removable internal chassis
- PBC guide rails in the assembly extrusions
- Aluminium front and rear panels included
- Front panels recessed to protect controls
- Four push-in non-slip rubber feet included

MATERIAL:

- Aluminium

PROTECTION CLASS:

- IP 40 (Not rated)

FINISH:

- Powder epoxy polyester paint

STANDARD COLOURS:

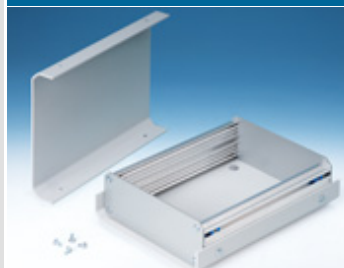
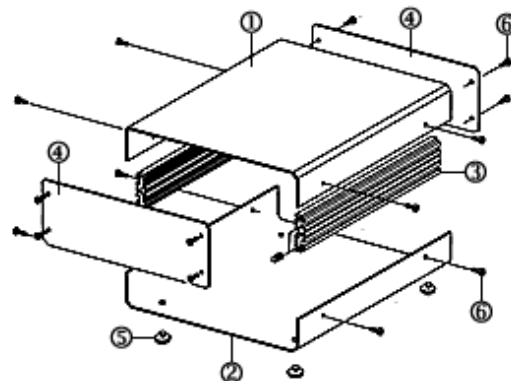
- Light grey, RAL 7035

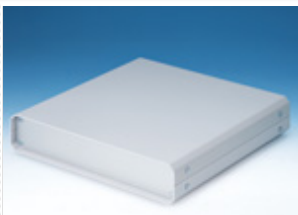
SUPPLY:

1. Top cover
2. Base cover
3. Assembly profile (x2)
4. Anodised aluminium front panel (x2)
5. Rubber foot (x4)
6. M3 x 8 mm (x16)

APPLICATIONS:

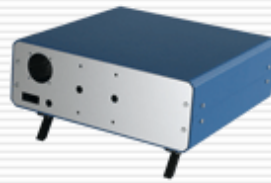
- Simple universal enclosures for measuring and control technology, feedback control, peripheral devices and interfaces, switchboxes, modems, medical field and laboratory technology.

[🔍 Assembly Instructions](#)[🖨️ Printable Page](#)**Standard Models****Slimline Models****Internal Chassis****Fast Assembly****Recessed Front Panel**



| Part No. Slimline Models | | Part No. Standard Models | Description | H | W | D | Drawings |
|--------------------------|---|--------------------------|-------------|-------|-----|-----|---------------------|
| M5511110 | £ | | UNICASE SL1 | 50 | 130 | 180 | PDF |
| M5512110 | £ | | UNICASE SL2 | 50 | 185 | 250 | PDF |
| M5513110 | £ | | UNICASE SL3 | 50 | 250 | 250 | PDF |
| M5514110 | £ | | UNICASE SL4 | 50 | 250 | 300 | PDF |
| | | M5501110 | £ UNICASE 1 | 65 | 185 | 180 | PDF |
| | | M5502110 | £ UNICASE 2 | 90 | 260 | 250 | PDF |
| | | M5503110 | £ UNICASE 3 | 110 | 350 | 250 | PDF |
| | | M5504110 | £ UNICASE 4 | 134.5 | 261 | 300 | PDF |
| | | M5505110 | £ UNICASE 5 | 134.5 | 367 | 300 | PDF |
| | | M5506110 | £ UNICASE 6 | 134.5 | 474 | 300 | PDF |

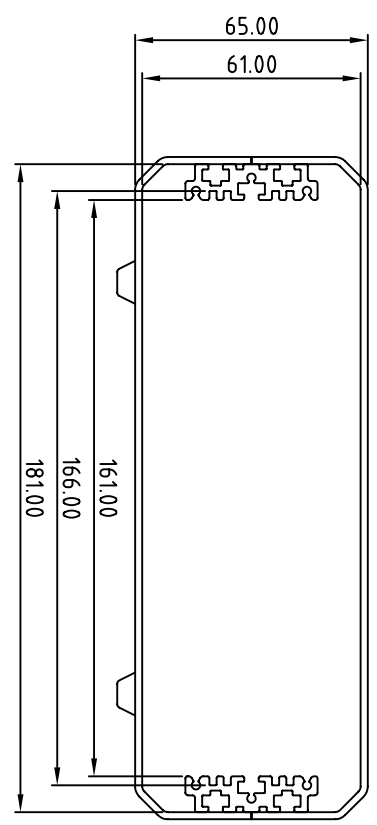
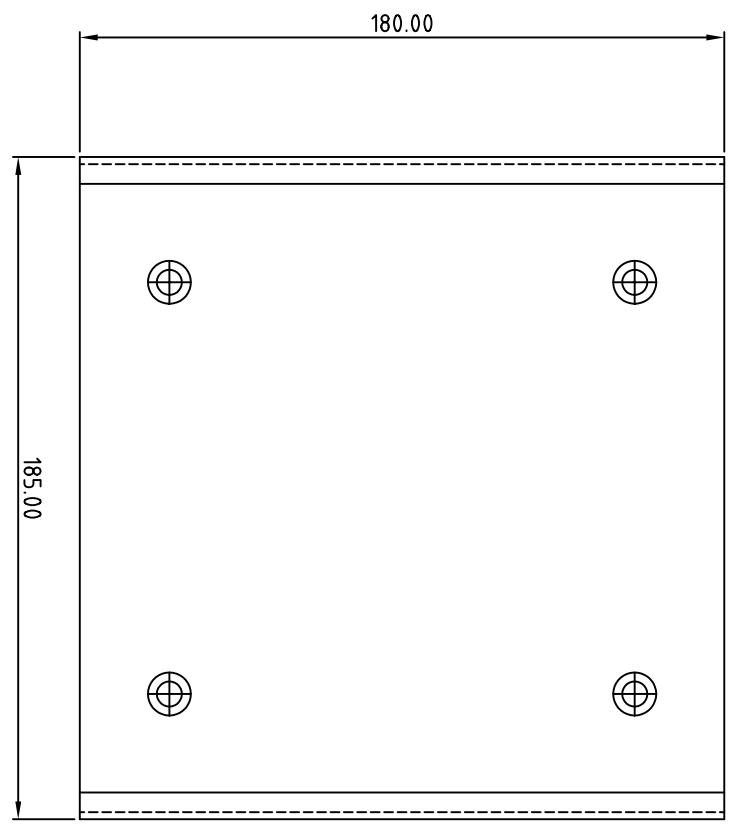
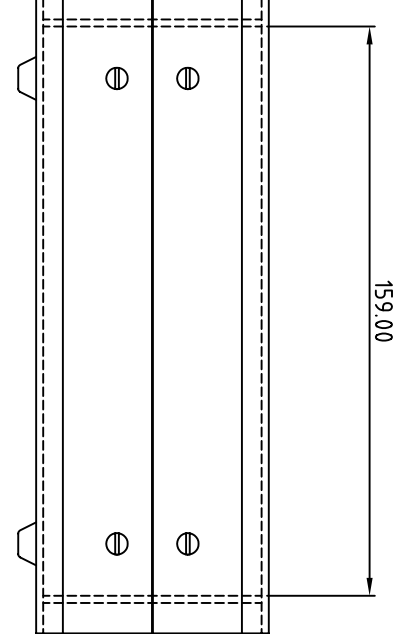
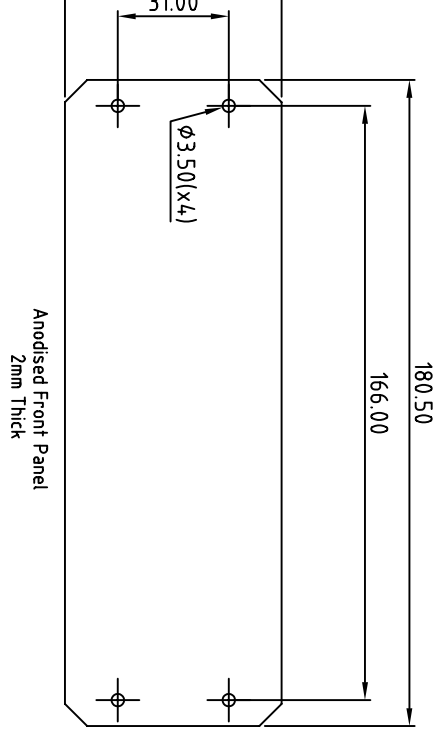
DWG



Customising

Tel: 01489 583858 Last Updated: 31-Oct-2007 ©METcase™ UK. All rights reserved.

Subject to technical modifications without prior notice.
 Typographical and other errors do not justify any claim for damages.
 All dimensions should be verified using the actual case.



| | | | | | | | | | | | |
|--|--|-----------------|--|--------------------------|--|-------------------------------|--|---------------------------|--|----------------|--|
| Tolerances unless otherwise stated: | | Required Finish | | Scale: 1:2 | | ALL DIMENSIONS IN MILLIMETRES | | Date of issue: August '05 | | DO NOT SCALE | |
| General tolerances ± 0.20 | | | | Drawn by: Ian Cox | | Checked by: | | | | Material Spec: | |
| Resultant tolerances between hole centers ± 0.15 | | | | Drawing Number: M5501110 | | Part Name: UNICASE 1 | | | | | |
| Tolerances on hole diameters ± 0.05 | | | | www.metcase.com | | METCASE ENCLOSURES | | | | | |
| Angles $\pm 0.5^\circ$ | | | | Unit 3, Mitchell Close | | Segensworth East, Fareham, | | | | Sheet 1 of 1 | |
| Surface finish $32/\surd$ | | | | Hampshire, PO15 5SE, UK. | | Part Number: M5501110 | | | | A4 | |

©OKW ENCLOSURES LTD. DATE AS SHOWN. THIS DRAWING CONTAINS PROPRIETARY INFORMATION OF OKW ENCLOSURES LTD AND IS TENDERED SUBJECT TO THE FOLLOWING CONDITIONS: THE INFORMATION BE RETAINED IN CONFIDENCE, NOT BE REPRODUCED OR COPIED, AND NOT BE USED OR INCORPORATED IN ANY PRODUCT, UNLESS PERMISSION IS OBTAINED IN WRITING FROM OKW ENCLOSURES LTD.

X-ON Electronics

Largest Supplier of Electrical and Electronic Components

Click to view similar products for [metcase](#) manufacturer:

Other Similar products are found below :

[M5501110](#) [M5623105F](#) [M5513110](#) [M5625305F](#) [M5725207](#) [M6019305](#) [M5506110](#) [M5700615](#) [M5700621](#) [M5505119](#)