

Type 935C, Polypropylene Capacitors for High Frequency Filtering

High Current Capacitors for Switching Power Supplies



Type 935 metallized polypropylene capacitors are designed for filtering applications in switching power supplies that operate in the 20-100 kHz range. Their low ESR, high current and high capacitance gives them an advantage over general purpose types. This series is UL recognized for construction only under UL File Number E128034(N).

Highlights

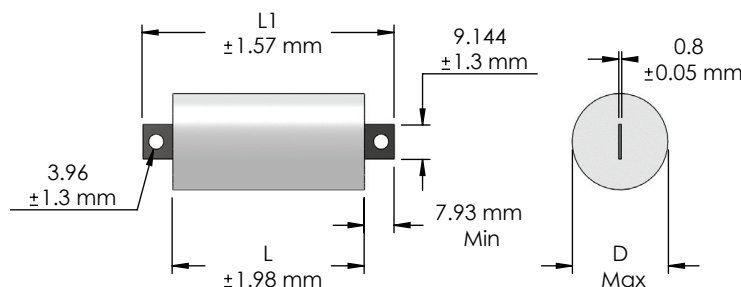
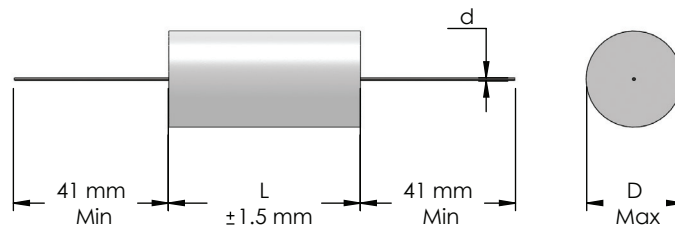
- Low ESR
- High current
- High capacitance
- Self healing
- UL recognized
- Available with lugs

Specifications

Capacitance Range	1.0 to 30.0 μ F
Capacitance Tolerance	$\pm 10\%$ (K) Standard; $\pm 5\%$ (J) Optional
Rated Voltage	100 to 400 Vdc (70 to 250 Vac, 60 Hz)
Operating Temperature Range with Ripple	-55 $^{\circ}$ C to 105 $^{\circ}$ C* *Full rated voltage at 85 $^{\circ}$ C - derated linearly to 50% rated at 105 $^{\circ}$ C
Maximum rms Current	Check tables for values
Insulation Resistance	200,000 M Ω x μ F
Test Voltage between Terminals @ 25 $^{\circ}$ C	200% rated DC voltage for 60 s
Test Voltage between Terminals & Case @ 25 $^{\circ}$ C	3 kVac @ 50/60 Hz for 60 s
Life Test	1,000 h @ 85 $^{\circ}$ C, 125% rated DC voltage
Life Expectancy	60,000 h @ rated Vdc, 70 $^{\circ}$ C 30,000 h @ rated Vac, 70 $^{\circ}$ C
RoHS Compliant	

Dimensions

Construction Diagram



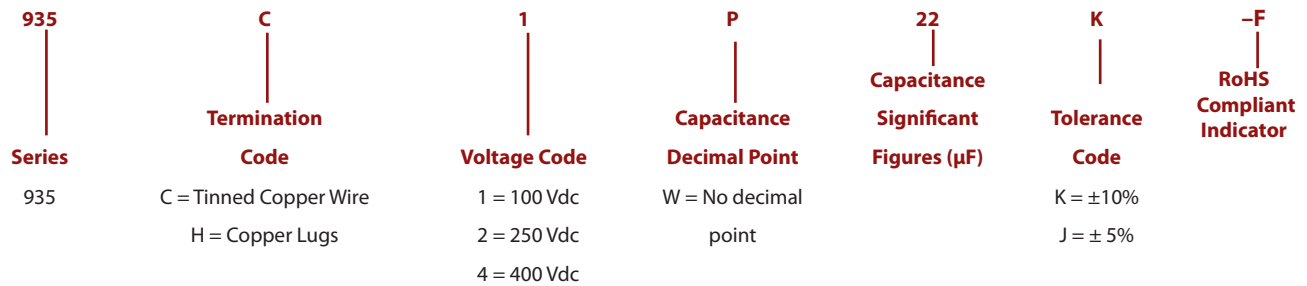
Construction Details

Case Material	UL510 Polyester Tape Wrap
Resin Material	UL94V-0 Epoxy Fill
Terminal Material	Tin Plated Copper

Type 935C, Metallized Polypropylene Capacitors for High Frequency Filtering

High Current Capacitors for Switching Power Supplies

Part Numbering System



Ratings

Wire Leads

NOTE: Other ratings, sizes and performance specifications are available. Contact us.

Cap. (μF)	Catalog Part Number	D mm	L mm	d mm	Max. ESR		Max. Ripple Current Amps RMS 20-100 kHz						
					20-100 kHz (mΩ)	dV/dt (V/μs)	Case Temperature						
100 Vdc (70 Vac)													
1	935C1W1K-F	11.9 ± 1.6	19.0	0.8	15	25	9.2	8.5	7.8	7.0	6.0	4.9	4.5
2	935C1W2K-F	13.6 ± 1.6	23.8	0.8	12	16	10.8	10.0	9.1	8.2	7.0	5.8	5.3
3	935C1W3K-F	15.8 ± 2.4	23.8	1.0	11	16	12.1	11.2	10.3	9.2	8.0	6.5	5.9
5	935C1W5K-F	16.3 ± 2.4	31.7	1.0	10	10	13.8	12.7	11.6	10.4	9.0	7.4	6.7
10	935C1W10K-F	20.4 ± 2.4	38.1	1.0	9	8	15.0	15.0	14.2	12.7	11.0	9.0	8.2
20	935C1W20K-F	22.2 ± 3.2	57.1	1.0	8	5	15.0	15.0	15.0	15.0	13.6	11.1	10.0
30	935C1W30K-F	27.3 ± 3.2	57.1	1.0	6	5	15.0	15.0	15.0	15.0	15.0	12.4	11.4
200 Vdc (140 Vac)													
1	935C2W1K-F	11.4 ± 1.6	31.7	0.8	20	15	7.3	7.3	7.3	7.3	7.2	5.9	5.4
2	935C2W2K-F	15.4 ± 2.4	31.7	0.8	15	15	12.0	12.0	11.3	10.1	8.7	7.1	6.5
3	935C2W3K-F	16.6 ± 2.4	38.1	1.0	13	12	15.0	13.8	12.6	11.3	9.8	8.0	7.3
5	935C2W5K-F	19.5 ± 2.4	44.4	1.0	11	9	15.0	15.0	14.7	13.1	11.4	9.3	8.5
10	935C2W10K-F	23.0 ± 3.2	57.1	1.0	9	7	15.0	15.0	15.0	15.0	13.8	11.3	10.3
20	935C2W20K-F	33.4 ± 3.2	57.1	1.0	6	7	15.0	15.0	15.0	15.0	15.0	14.1	12.8
400 Vdc (250 Vac)													
1	935C4W1K-F	15.7 ± 2.4	38.1	0.8	19	19	9.5	9.5	9.5	9.5	9.5	7.8	7.1
2	935C4W2K-F	20.4 ± 2.4	44.4	1.0	15	16	15.0	15.0	15.0	13.4	11.6	9.5	8.7
3	935C4W3K-F	24.4 ± 3.2	44.4	1.0	12	16	15.0	15.0	15.0	15.0	13.1	10.7	9.8
5	935C4W5K-F	27.1 ± 3.2	57.1	1.0	10	11	15.0	15.0	15.0	15.0	15.0	12.5	11.4
10	935C4W10K-F	39.2 ± 3.2	57.1	1.0	6	11	15.0	15.0	15.0	15.0	15.0	15.0	14.1

Type 935C, Metallized Polypropylene Capacitors for High Frequency Filtering

High Current Capacitors for Switching Power Supplies

Lug Leads

NOTE: Other ratings, sizes and performance specifications are available. Contact us.

Cap. (μ F)	Catalog Part Number	D mm	L mm	L1 mm	Max. ESR		Max. Ripple Current Amps RMS 20-100 kHz						
					20-100 kHz (m Ω)	dV/dt (V/ μ s)	Case Temperature						
100 Vdc (70 Vac)													
1	935H1W1K-F	11.9 \pm 1.6	19.0	41.6	15	25	10.3	9.5	8.7	7.8	6.7	5.5	5.0
2	935H1W2K-F	13.6 \pm 1.6	23.8	46.4	12	16	12.0	11.0	10.0	8.9	7.8	6.3	5.8
3	935H1W3K-F	15.8 \pm 2.4	23.8	46.4	11	16	13.3	12.3	11.2	10.0	8.7	7.1	6.5
5	935H1W5K-F	16.3 \pm 2.4	31.7	53.3	10	10	14.8	13.7	12.5	11.2	9.7	7.9	7.2
10	935H1W10K-F	20.4 \pm 2.4	38.1	57.2	9	8	17.8	16.5	15.0	13.5	11.7	9.5	8.7
20	935H1W20K-F	22.2 \pm 3.2	57.1	77.6	8	5	21.6	20.0	18.3	16.4	14.2	11.6	10.6
30	935H1W30K-F	27.3 \pm 3.2	57.1	77.6	6	5	24.3	22.5	20.5	18.4	15.9	13.0	11.9
200 Vdc (140 Vac)													
1	935H2W1K-F	11.4 \pm 1.6	31.7	53.3	20	15	7.3	7.3	7.3	7.3	7.3	6.4	5.8
2	935H2W2K-F	15.4 \pm 2.4	31.7	53.3	15	15	14.3	13.3	12.1	10.8	9.4	7.7	7.0
3	935H2W3K-F	16.6 \pm 2.4	38.1	57.2	13	12	15.9	14.7	13.5	12.0	10.4	8.5	7.8
5	935H2W5K-F	19.5 \pm 2.4	44.4	65.3	11	9	18.3	17.0	15.5	13.9	12.0	9.8	8.9
10	935H2W10K-F	23.0 \pm 3.2	57.1	77.6	9	7	22.4	20.7	18.9	16.9	14.6	12.0	10.9
20	935H2W20K-F	33.4 \pm 3.2	57.1	77.6	6	7	27.4	25.4	23.2	20.7	17.9	14.7	13.4
400 Vdc (250 Vac)													
1	935H4W1K-F	15.7 \pm 2.4	38.1	57.2	19	19	9.5	9.5	9.5	9.5	9.5	8.3	7.5
2	935H4W2K-F	20.4 \pm 2.4	44.4	65.3	15	16	15.0	15.0	15.0	14.2	12.3	10.0	9.1
3	935H4W3K-F	24.4 \pm 3.2	44.4	65.3	12	16	21.1	19.5	17.8	15.9	13.8	11.3	10.3
5	935H4W5K-F	27.1 \pm 3.2	57.1	77.6	10	11	24.4	22.6	20.6	18.5	16.0	13.1	11.9
10	935H4W10K-F	39.2 \pm 3.2	57.1	77.6	6	11	30.0	27.8	25.4	22.7	19.7	16.1	14.7

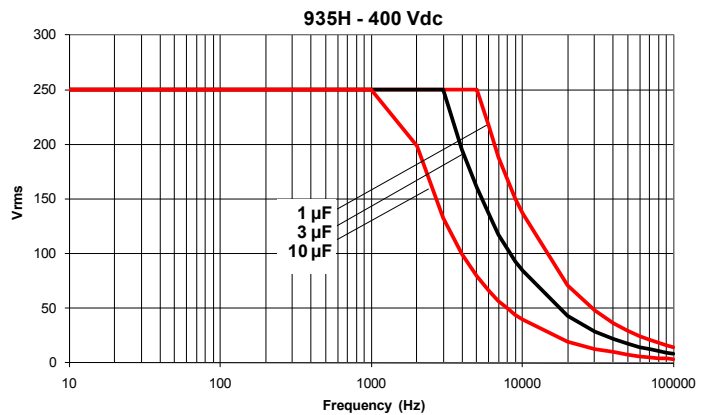
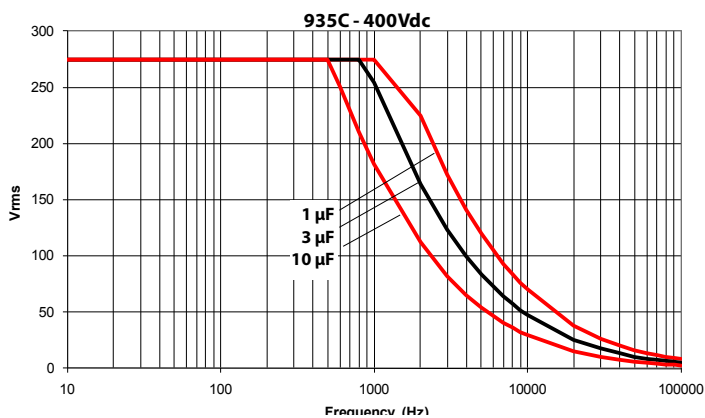
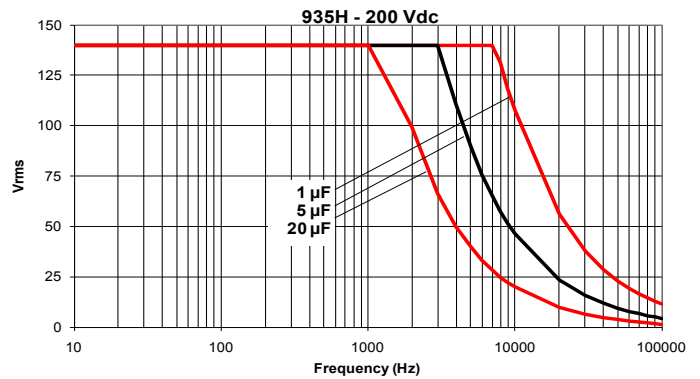
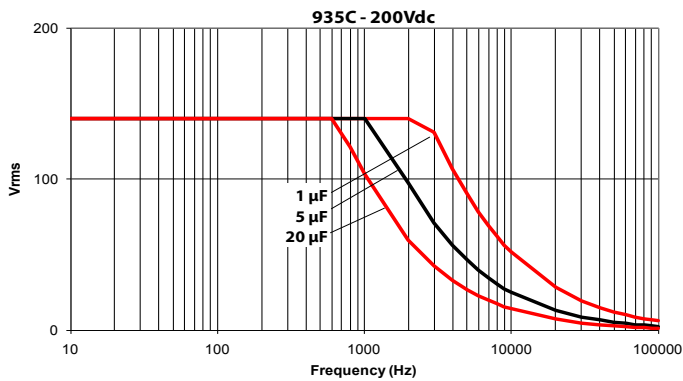
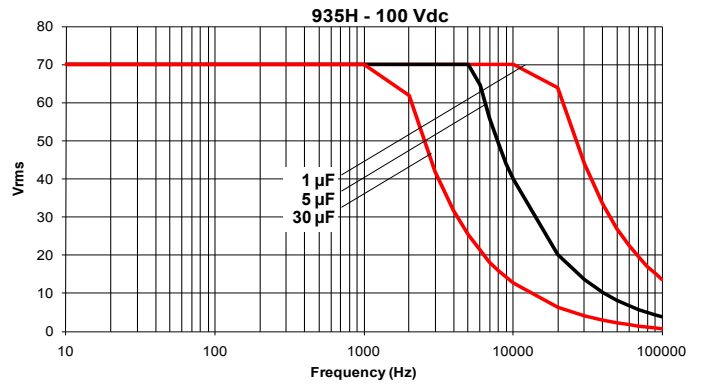
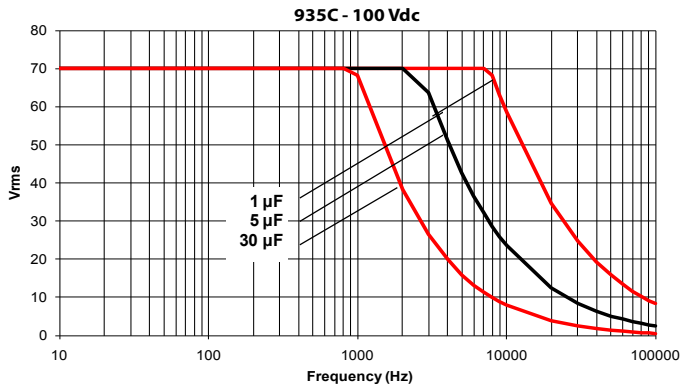
Type 935C, Metallized Polypropylene Capacitors for High Frequency Filtering

High Current Capacitors for Switching Power Supplies

RMS Voltage vs Frequency @ 25 °C

Wire Leads

Lug Leads



X-ON Electronics

Largest Supplier of Electrical and Electronic Components

Click to view similar products for [Film Capacitors](#) category:

Click to view products by [Cornell Dubilier](#) manufacturer:

Other Similar products are found below :

[F339X134748MIP2T0](#) [F450KG153J250ALH0J](#) [750-1018](#) [FKP1-1500160010P15](#) [FKP1R031007D00JYSD](#) [FKP1R031507E00JYSD](#)
[FKP1U024707E00KYSD](#) [82DC4100CK60J](#) [82EC1100DQ50K](#) [PFR5101J100J11L16.5TA18](#) [PME261JB5220KR19T0](#) [A451GK223M040A](#)
[A561ED221M450A](#) [QXJ2E474KTPT](#) [QXL2B333KTPT](#) [R49AN347000A1K](#) [EEC2G505HQA406](#) [B25668A6676A375](#) [B25673A4282E140](#)
[BFC233868148](#) [BFC2370GC222](#) [C3B2AD44400B20K](#) [C4ASWBU3220A3EK](#) [CB027C0473J--](#) [CB177I0184J--](#) [CB182K0184J--](#) [23PW210](#)
[950CQW5H-F](#) [SBDC3470AA10J](#) [SCD105K122A3-22](#) [2N3155](#) [A571EH331M450A](#) [FKP1-2202KV5P15](#) [FKS3-680040010P10](#)
[QXL2E473KTPT](#) [445450-1](#) [B25669A3996J375](#) [46KI322000M1M](#) [46KR415050M1K](#) [4BSNBX4100ZBFJ](#) [MKP383510063JKP2T0](#)
[MKPY2-.02230020P15](#) [MKT 1813-368-015](#) [4055292001](#) [46KN410000N1K](#) [EEC2E106HQA405](#) [EEC2G205HQA402](#) [EEC2G805HQA415](#)
[P409CP224M250AH470](#) [82EC2150DQ50K](#)