

# 0910 - 0911 Push Button Snap Action Switches 15(4)A 250Vac



15(4)A 250Vac T85

UL 15A, 1/2hp 125-250Vac 85°C,  
UL file E91973, CSA file LR98589

Approvals apply to switch mechanism only (34340350COLO00)  
μ contact gap  
Full rating details and technical data on pages 50 & 51  
Ratings are at full plunger travel



C0911KB ---



C0911VA ---



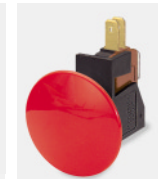
C0911RB ---



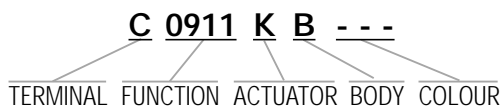
C0911PB ---



C0911EB ---

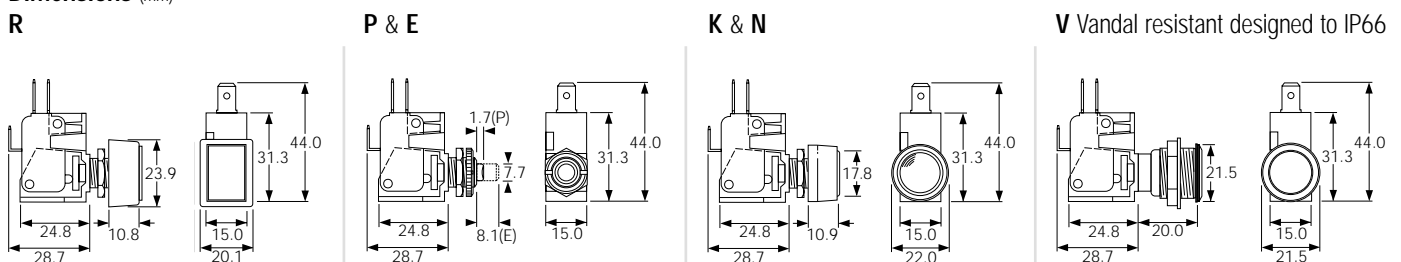


C0911BB ---



▶ TERMINAL	▶ FUNCTION	▶ ACTUATOR	▶ BODY	▶ OPTIONS
<p><b>C</b></p> <p>6.3 x 0.8</p>	<p><b>0910</b></p> <p>ON - ON (alternate)</p> <p>0910 is available with K and N actuators only</p> <p><b>0911</b></p> <p>ON - ON (momentary)</p>	<p><b>R</b> Rectangular bezel</p> <p><b>B</b> Large Contact factory for details</p> <p><b>E</b> Long</p> <p><b>P</b> Short</p> <p><b>K</b> with satin chrome bezel</p> <p><b>N</b> with nylon bezel</p> <p><b>V</b> Vandal resistant (911 only)</p>	<p><b>B</b> N/A for V Actuator</p> <p>Panel Cut-out</p> <p>Panel thickness Both nuts 2.5mm No backnut 4.0mm</p> <p><b>A</b> Stainless steel chamfer profile bezel for V actuator only</p> <p>Panel Cut-out</p> <p>Panel thickness 8.0mm</p>	<p><b>Colour</b> Call factory for custom colours A full range is available for large orders</p> <p><b>Cover M323</b> Available for "P" actuator only</p> <p>Covers have internal nylon nut</p>

## Dimensions (mm)

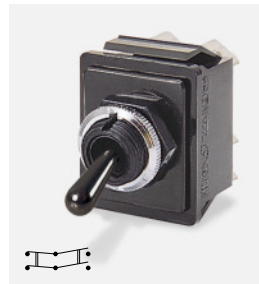




C1700RO ---



C1700HO ---



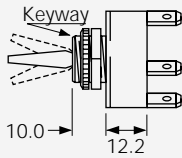
C1760RO ---



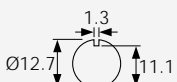
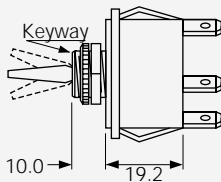
C1750HO ---

**BODY**

**0**  
Single pole



**0**  
Double pole



Panel hole (all types)  
Panel thickness (Max)  
Both nuts - 3.5mm  
Less backnut - 6.5mm

**OPTIONS**

**Neck Seal M539**  
Rubber -57T145  
(H & R Actuators)  
Actuator visible



**Cover M1080**  
Rubber -57T145  
(R Actuator only)

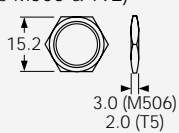


**Cover M331**  
PVC -5T85  
(R Actuator only)

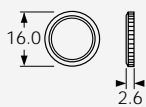


Covers have internal nylon nuts

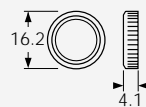
**Fixing nuts** (Standard is M506 & T92)  
T5 Hex brass  
M506 Hex nylon



T92 Knurled brass



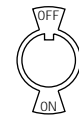
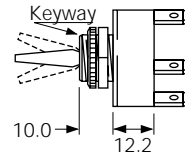
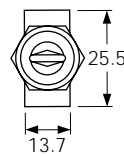
M279 Knurled nylon



**DIMENSIONS (mm)**

**Single Pole**

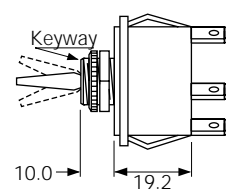
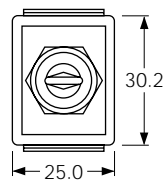
(C terminals shown)



Optional  
P232 plate  
SP or DP

**Double Pole**

(C terminals shown)



Optional terminal barrier M441 is available

## X-ON Electronics

Largest Supplier of Electrical and Electronic Components

*Click to view similar products for [arcolectric manufacturer](#):*

Other Similar products are found below :

[F0167LOAAA](#) [H8300ABBB](#) [H8550XBDDR076R](#) [H8553VBBG3076W](#) [H8553VBBA3](#) [H8650VBBB076W](#) [R13112BBR3](#) [R13112LPBR1](#)  
[NL275C3A-CHROME](#) [NL67H2A](#) [C1510AABW](#) [C1550WABWCL050B](#) [C5503PLBR5](#) [C5503PLBR3](#) [C7053AFBA3](#) [279672](#)  
[H8500XBDDR076R](#) [R13112B2BR6](#) [R13112BBG3](#) [R13208FBB](#) [C1550WABB602AW](#) [C6053ALBR31197W](#) [C6053ALBG31197W](#) [3700](#)  
[LE2870C5G](#) [LHM62R](#) [512F10AE222](#) [64F500FA383](#) [C1350XBMBBG](#) [C1353ATMBG3602AW](#) [C1520ALMBB730W](#) [C1300AAAAA](#)  
[C1353VQGBR3602AW](#) [C1353VQGBG3602AW](#) [C1500XAMBBR](#) [T0340RA](#) [L104100FAF](#) [H8503VBBR2](#) [H8503VBNAE](#) [NL67C2R](#)  
[C3900BA](#) [NL2950BWL2A](#) [C6053ALBG31197WB](#) [NL177WL2R](#) [C480AABA7](#) [H8503VBBR2-B](#) [468](#) [LH1050WL-3602](#) [T0063AOFAD](#)  
[C1560AAAAA](#)