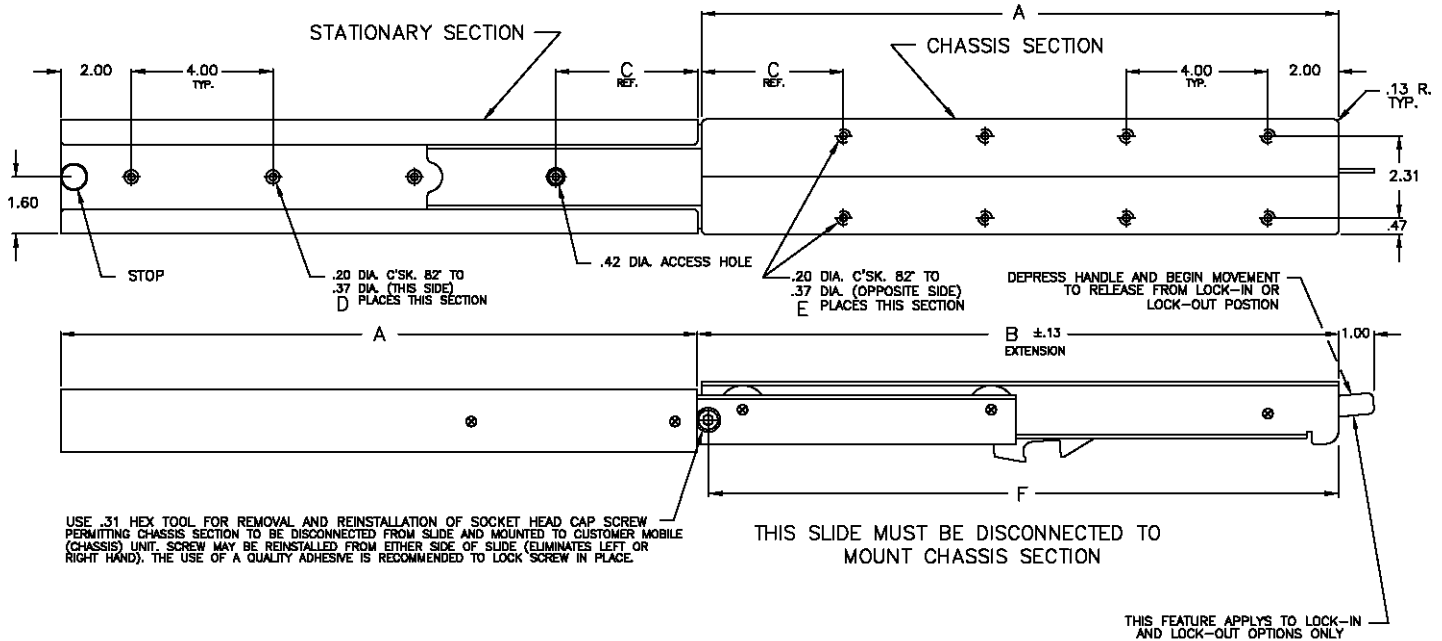


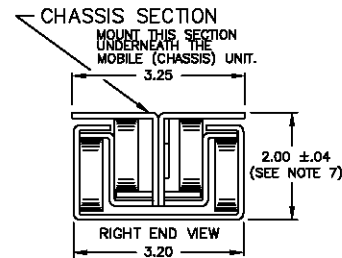
Roller Bearing Bottom Mount Slide



TO ORDER, SPECIFY



Length (Dim. A) LI - LO - For Lock-In/Lock-Out Feature



Catalog Number	A	B	C	D	E	F	Load Capacity
C-938-12	12.0	12.06	2.00	3	6	11.67	400 LBS.
C-938-14	14.0	14.06	4.00	3	6	13.67	335 LBS.
C-938-16	16.0	16.06	2.00	4	8	15.67	285 LBS.
C-938-18	18.0	18.06	4.00	4	8	17.67	250 LBS.
C-938-20	20.0	20.06	2.00	5	10	19.67	220 LBS.
C-938-22	22.0	22.06	4.00	5	10	21.67	200 LBS.
C-938-24	24.0	24.06	2.00	6	12	23.67	180 LBS.
C-938-26	26.0	26.06	4.00	6	12	25.67	165 LBS.
C-938-28	28.0	28.06	2.00	7	14	27.67	155 LBS.
C-938-30	30.0	30.06	4.00	7	14	29.67	140 LBS.
C-938-32	32.0	32.06	2.00	8	16	31.67	130 LBS.
C-938-34	34.0	34.06	4.00	8	16	33.67	125 LBS.
C-938-36	36.0	36.06	2.00	9	18	35.67	120 LBS.
C-938-38	38.0	38.06	4.00	9	18	37.67	110 LBS.
C-938-40	40.0	40.06	2.00	10	20	39.67	105 LBS.
C-938-42	42.0	42.06	4.00	10	20	41.67	100 LBS.
C-938-44	44.0	44.06	2.00	11	22	43.67	95 LBS.
C-938-46	46.0	46.06	4.00	11	22	45.67	90 LBS.
C-938-48	48.0	48.06	2.00	12	24	47.67	85 LBS.

Notes

- Standard C-938 has no locking features.
- Optional lock-in/lock-out feature is available.
- Finish: E-Coat conversion coating or clear zinc commercial plating.
- Load capacity is based on one slide at full extension with the load (center of gravity) at the midpoint of the slide (chassis section). For increased load capacity, multiply the number of slides required for the application.
- Stated load capacity has a 100% static (non-moving) load safety factor at full extension. Slide is not intended to be operated with continuous loading which exceeds stated capacities.
- Ball bearing rollers are lubricated with -45°F to +350°F temperature range grease.
- Measured in the closed (retracted) position.
- Slide members are made from 12 gage (.105) cold rolled steel.
- Other non-standard options including finishes and stainless steel slides are available. These options require a special reference number.
- No mounting hardware supplied.
- Slide is designed for compression or suspension loading.

X-ON Electronics

Largest Supplier of Electrical and Electronic Components

Click to view similar products for [Other Tools](#) category:

Click to view products by [General Devices](#) manufacturer:

Other Similar products are found below :

[CR-05FL7--150R](#) [CR-05FL7--698K](#) [899-2-KT46](#) [899-5-KT46](#) [CR-0AFL4--332K](#) [CR-12FP4--260R](#) [5718X-01PD-19RO](#)
[CRCW04021100FRT7](#) [CRCW04021961FRT7](#) [5800-0090](#) [CRCW04024021FRT7](#) [CRCW040254R9FRT7](#) [CRCW0603102JRT5](#) [59065-5](#) [00-8273-RDPP](#) [00-8729-WHPP](#) [593033](#) [593058](#) [593072](#) [593564100](#) [593575](#) [593591](#) [593593](#) [LTLA506SBLAMNBL](#) [CRCW08052740FRT1](#)
[LUC-012S070DSM](#) [LUC-018S070DSP](#) [599-2021-3-NME](#) [599-JJ-2021-03](#) [00-5080-YWPP](#) [5E4750/01-20R0-T/R](#) [LW1A-L1-GD](#) [LW1A-L1-GL](#) [LW1A-P1-GD](#) [LW1L-A1C10V-GL](#) [LW1L-M1C70-A](#) [0202-0173](#) [00-9089-RDPP](#) [CRCW2010331JR02](#) [01-1003W-8/32-10](#) [601-GP-08-KT39](#) [601-JJ-06](#) [601-SPB](#) [601YSY](#) [602-JJ-03](#) [602SPB](#) [602Z](#) [603-JJ-07-FP](#) [603-JJY-04](#) [604J](#)