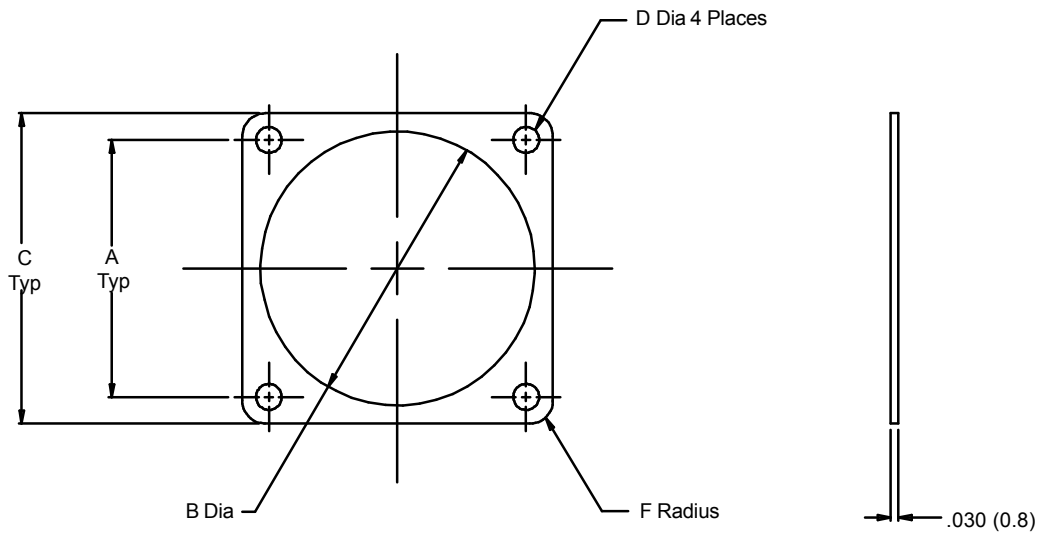


**930 - 001 F 02**

Product Series \_\_\_\_\_  
Basic Number \_\_\_\_\_  
Dash Number (Table I) \_\_\_\_\_  
Material Symbol (Table II) \_\_\_\_\_

**NOTES:**

1. Identified by bag and tag in suitable quantities.
2. Metric dimensions (mm) are indicated in parentheses.

**930-001**  
**Gasket for Flange Mount**  
**Receptacle Connector**



**TABLE I: DASH NUMBER**

| Dash No. | MIL-DTL-26482,<br>26500, 83723 |                  | MIL-DTL-38999      |         | A              |                | B Dia          |                | C              |  | D Dia |  | F Rad |  |
|----------|--------------------------------|------------------|--------------------|---------|----------------|----------------|----------------|----------------|----------------|--|-------|--|-------|--|
|          | Series I & III<br>NAS1599 B&T  | Series<br>I & II | Series<br>III & IV | AS81703 | ±.005<br>(0.1) | ±.007<br>(0.2) | ±.008<br>(0.2) | ±.005<br>(0.1) | ±.015<br>(0.4) |  |       |  |       |  |
| 01       | 8                              | 8                | -                  | -       | .595 (15.1)    | .562 (14.3)    | .812 (20.6)    | .125 (3.2)     | .105 (2.7)     |  |       |  |       |  |
| 02       | -                              | -                | -                  | 3       | .625 (15.9)    | .603 (15.3)    | .896 (22.8)    | .125 (3.2)     | .105 (2.7)     |  |       |  |       |  |
| 03       | 10                             | 9 & 10           | 9                  | 7       | .719 (18.3)    | .687 (17.4)    | .937 (23.8)    | .125 (3.2)     | .105 (2.7)     |  |       |  |       |  |
| 04       | 12                             | 11 & 12          | 11                 | -       | .812 (20.6)    | .772 (19.6)    | 1.031 (26.2)   | .125 (3.2)     | .105 (2.7)     |  |       |  |       |  |
| 05       | -                              | -                | -                  | 12      | .812 (20.6)    | .828 (21.0)    | 1.114 (28.3)   | .125 (3.2)     | .105 (2.7)     |  |       |  |       |  |
| 06       | 14                             | 13 & 14          | 13                 | 19      | .906 (23.0)    | .937 (23.8)    | 1.125 (28.6)   | .125 (3.2)     | .105 (2.7)     |  |       |  |       |  |
| 07       | 16                             | 15 & 16          | 15                 | 27      | .969 (24.6)    | 1.063 (27.0)   | 1.250 (31.8)   | .125 (3.2)     | .135 (3.4)     |  |       |  |       |  |
| 08       | 18                             | 17 & 18          | 17                 | -       | 1.062 (27.0)   | 1.187 (30.1)   | 1.343 (34.1)   | .125 (3.2)     | .135 (3.4)     |  |       |  |       |  |
| 09       | -                              | -                | -                  | 37      | 1.187 (30.1)   | 1.266 (32.2)   | 1.458 (37.0)   | .125 (3.2)     | .135 (3.4)     |  |       |  |       |  |
| 10       | 20                             | 19 & 20          | 19                 | -       | 1.156 (29.4)   | 1.312 (33.3)   | 1.467 (37.3)   | .125 (3.2)     | .135 (3.4)     |  |       |  |       |  |
| 11       | 22                             | 21 & 22          | 21                 | -       | 1.250 (31.8)   | 1.437 (36.5)   | 1.562 (39.7)   | .125 (3.2)     | .135 (3.4)     |  |       |  |       |  |
| 12       | 24                             | 23 & 24          | 23                 | -       | 1.375 (34.9)   | 1.562 (39.7)   | 1.703 (43.3)   | .152 (3.9)     | .135 (3.4)     |  |       |  |       |  |
| 13       | -                              | -                | -                  | 61      | 1.436 (36.5)   | 1.570 (39.9)   | 1.799 (45.7)   | .125 (3.2)     | .135 (3.4)     |  |       |  |       |  |
| 14       | -                              | 25               | 25                 | -       | 1.500 (38.1)   | 1.600 (40.6)   | 1.812 (46.0)   | .152 (3.9)     | .135 (3.4)     |  |       |  |       |  |

**TABLE II: MATERIAL**

| Symbol   | Material Description                               |
|----------|--|
| <b>B</b> | Fluorosilicone with Silver Aluminum 84 Shore (Ref) |
| <b>C</b> | Conductive — Metex                                 |
| <b>F</b> | Fluorosilicone                                     |
| <b>M</b> | Conductive — Con-Sil II                            |
| <b>N</b> | Neoprene   |
| <b>S</b> | Silicone   |
| <b>V</b> | Viton  |

Metric Dimensions (mm) are indicated in parenthesis.

## X-ON Electronics

Largest Supplier of Electrical and Electronic Components

*Click to view similar products for* [Circular MIL Spec Tools, Hardware & Accessories](#) *category:*

*Click to view products by* [Glenair](#) *manufacturer:*

Other Similar products are found below :

[809-199-3](#) [001104](#) [300 04](#) [600-006-16](#) [600-079-06](#) [M10-101982-143](#) [M10-101982-163](#) [M10-101983-183](#) [M10-150912-083](#) [M10-454396-008](#) [602GB18808](#) [M225201-06](#) [M24758-20E21](#) [M2887610-BC](#) [M2887615-CD](#) [M38999/9-19B](#) [62GB-812-10](#) [630A007NF083A](#) [630B007M051A](#) [630BJ003NF032H](#) [637-149NF04B](#) [M39029/29-215](#) [650FS002NF16](#) [M81969-14-02](#) [660-008NF14S7-01](#) [660-009M22H8-03](#) [660-013NF19U6-210](#) [660-015M10S6-17](#) [660-015NF10S5-01](#) [660-015NF14R3.5-01](#) [660-023NF19H6-19](#) [660-024N09S5-104](#) [660-024NF11S12-01](#) [660-024NF11S3-01](#) [660-050XM17F4-01](#) [660-068NF25R6-30G](#) [660-070M23S8-04](#) [660-073MTCH9-20](#) [M83723/60-116RC](#) [M83723/61-18W](#) [M83723/61-218R](#) [M83723/61-224W](#) [667-224NF16](#) [M85049/118S22A](#) [M85049/126S11N](#) [M85049130-07M](#) [M85049140-09BC](#) [M85049/41-16A W/B](#) [687-697NF-1](#) [M85049/75-14-1](#) [M8504980-8](#)