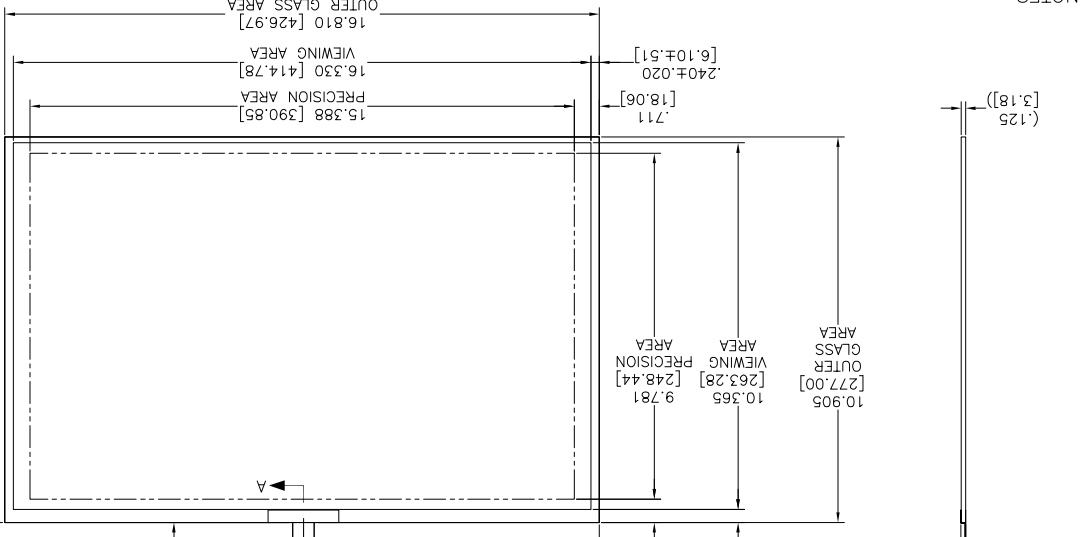
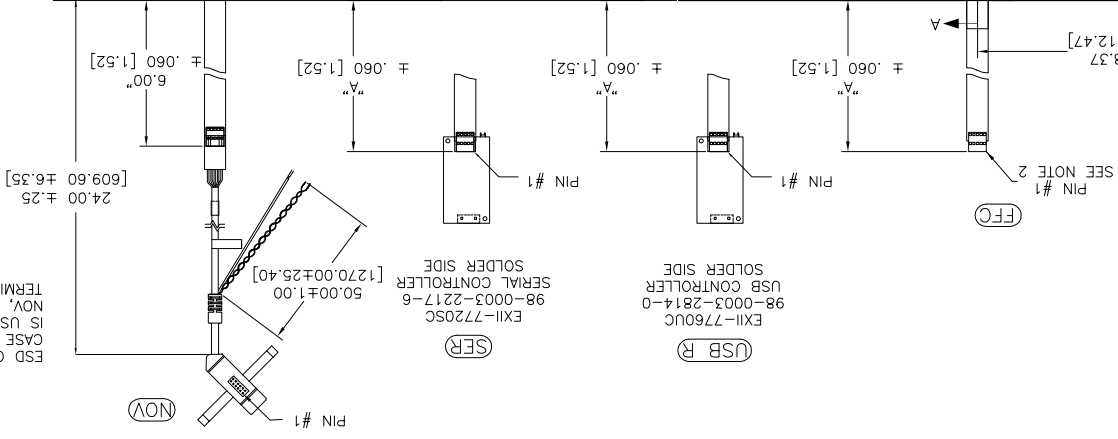
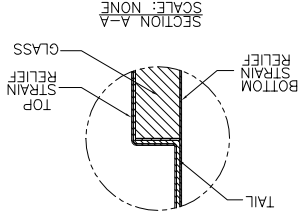


OGA DIAGONAL: 20.04 [508.95]
 VA DIAGONAL: 19.34 [491.28]
 PA DIAGONAL: 18.23 [463.13]

TOP LEVEL NUMBER	US NUMBER	TYPE	DM "A" (TOTAL GLASS TO CONNECTOR)	A/G FINISH	PROD SPEC
17-9251-204	98-0003-2206-9	FFC	6.00" [152.40]	AG500	23655
17-9251-205	98-0003-2716-7	FCC	8.00" [203.20]	AG500	23655
17-9251-206	98-0003-2717-5	NOV	SEE DWG	AG500	23655
17-9251-223	98-0003-2208-5	SER	6.00" [152.40]	AG500	23655
17-9251-227	98-0003-2720-9	SER	8.00" [203.20]	AG500	23655
17-9251-220	98-0003-2718-3	USB R	6.00" [152.40]	AG500	23655
17-9251-226	98-0003-3046-8	USB R	8.00" [203.20]	AG500	23655
N/A	98-0003-3415-5	FCC	8.00" [203.20]	WC100	34523
N/A	98-0003-3416-3	USB R	8.00" [203.20]	WC100	34523
N/A	98-0003-3417-1	SER	8.00" [203.20]	WC100	34523



NOTES:

- WEIGHT OF GLASS IN GRAMS: 927 ± 10%
- NICOMATIC HOUSING P/N: 0105
- NICOMATIC RECEPTACLES (PINS) MATTE TIN PLATED P/N: 14106-12

PINOUT	
1	LL
2	UL
3	SHLD
4	UR
5	LR

3M TOUCH SYSTEMS
 WALTHAM, MA USA

© COPYRIGHT 2004
 THIS DOCUMENT IS COPYRIGHTED PROPERTY OF THE COMPANY AND MAY NOT BE REPRODUCED OR USED FOR OTHER THAN 3M AUTHORIZED PURPOSES.

UNITS INCHES [MM]
 TOLERANCES UNLESS OTHERWISE SPECIFIED
 ANGLES ± 1°
 .XX ± .03 [0.76]
 .XXX ± .015 [0.38]

DO NOT SCALE DRAWING
 SCALE 1 = 1

THIRD ANGLE PROJECTION

DRAWN MTD 9/7/06
 AUTOCAD 1 OF 1

MARKETING DRAWING
 SCT32NN 19.34" W
 322739-MKT

REV L REVISED PER CO 036256 4/13 SB
 K REVISED PER CO 033533 9/11 SB
 J REVISED PER CO 033454 7/10 SB

CHANGE NOTICE

REV	DATE	DMW
L	4/13	SB
K	9/11	SB
J	7/10	SB

X-ON Electronics

Largest Supplier of Electrical and Electronic Components

Click to view similar products for [Display Modules](#) category:

Click to view products by [3M](#) manufacturer:

Other Similar products are found below :

[LCD-WVGA-7IN-1](#) [P6153-PR](#) [TDP0700T800480PCAP](#) [P6171DPR-DC-RS](#) [99-47-02033A](#) [P6171DPR-DC-U](#) [96LEDK-A215FH25NF5](#)
[IDK-1121WR-30FHA1E](#) [IDK-104R-32SVI1](#) [WF70GTIAGDNT0#](#) [G1619W02BBW01](#) [MIKROMEDIA 4 FOR STM32F4 CAPACITIVE FPI](#)
[MIKROMEDIA 3 FOR STM32F4 CAPACITIVE FPI](#) [PH320240T023-IHC09](#) [1148693](#) [1148689](#) [PIM537](#) [TN0216ANVNANN-GN00](#)
[TN0104ANVAANN-GN00](#) [TN0181ANVNANN-GN00](#) [12121000](#) [MIKROMEDIA FOR DSPIC33](#) [MIKROMEDIA FOR PIC24](#)
[MIKROMEDIA FOR PIC32](#) [MIKROMEDIA FOR STELLARIS M3](#) [MIKROMEDIA FOR XMEGA](#) [MIKROMEDIA HMI 3.5 RES](#)
[MIKROMEDIA HMI 5](#) [MIKROMEDIA PLUS FOR FT90X](#) [MIKROMEDIA PLUS FOR PIC32MX7 SHIELD](#) [MIKROMEDIA PROTO](#)
[SHIELD](#) [MIKROMEDIA 5 FOR TIVA](#) [MIKROMEDIA 5 FOR TIVA SHIELD](#) [MIKROMEDIA 7 FOR STM32F4](#) [MIKROMEDIA](#)
[CONNECT SHIELD](#) [MIKROMEDIA FOR ARM](#) [MIKROMEDIA FOR DSPIC33EP](#) [MIKROMEDIA FOR PSOC5LP](#) [MIKROMEDIA](#)
[GAMING SHIELD](#) [MIKROMEDIA HMI 4.3 UXB](#) [MIKROMEDIA HMI 5 RES](#) [MIKROMEDIA HMI 5 UXB](#) [MIKROMEDIA HMI 7](#)
[MIKROMEDIA HMI BREAKOUT BOARD](#) [MIKROMEDIA PLUS FOR PIC32MX7](#) [MIKROMEDIA PLUS FOR STM32](#)
[RVT28AEFNWN00](#) [RVT28UEFNWC01](#) [RVT28UEFNWC03](#) [RVT28UEFNWC05](#)