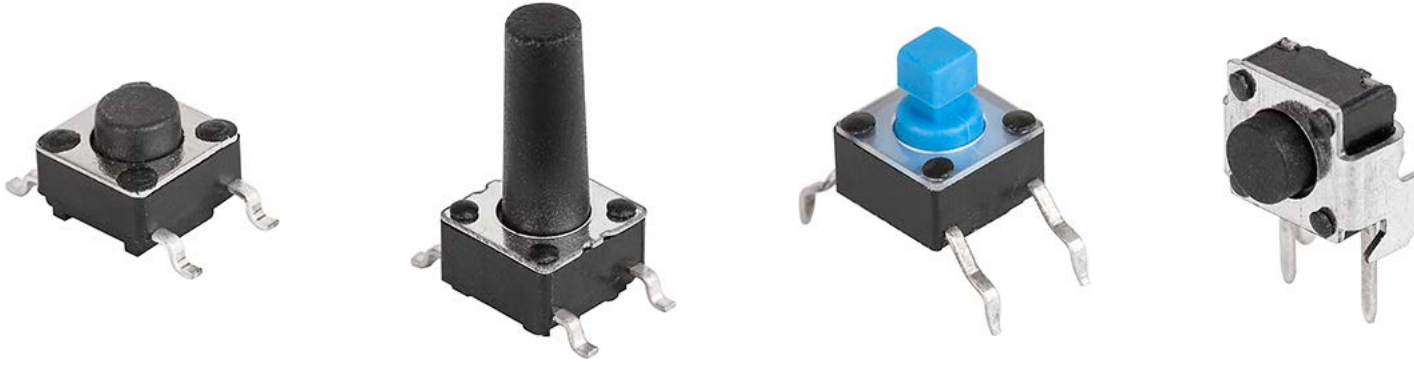


Printmount Swicht, Short Stroke, 6 mm, Square Actuator



Weblinks

[html-datasheet](#), [General Product Information](#), [CE declaration of conformity](#), [RoHS](#), [CHINA-RoHS](#), [e-Shop](#), [CAD-Drawings](#), [Product News](#), [Detailed request for product](#)

All Variants

| Description | Order Number |
|---------------------------------------|--------------|
| LPS 6X6 SHORT TRAVEL SWITCH 2.4X2.4MM | 1301.9308 |

Most Popular.

Availability for all products can be searched real-time:<http://www.schurter.com/en/Stock-Check/Stock-Check-SCHURTER>

DATA LSH, LPH, LPS, LPV, SMS, PMS, MTG SWITCHES – MOMENTARY ACTION



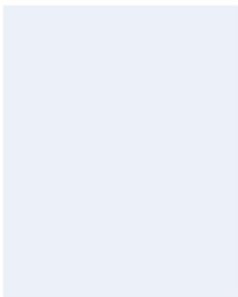
BENEFITS

- Simple assembly, long life time, short lead time
- Reliable tactile feedback
- Various designs with 1/4 and 1/2 inch are possible with different heights
- Variable colour design and lettering
- Available for through hole and SMD assembly
- Tested to degree of protection IP 40 and IP 67

| | | LSH/LPH LPS/LPV | SMS | PMS | MTG | |
|--|------------------------|--------------------|--------------------|-------------------|---------------------------|-------------------|
| Electrical data | | | | | | |
| Contact material | | | | | gold | silver |
| Switching voltage max. | [V] | 12 DC | 30 AC / 42 DC | 30 AC / 42 DC | max. 24 DC | max. 48 DC |
| Switching current max. | [mA] | 50 | 50 | 50 | max. 50 | max. 125 |
| Rated breaking capacity | [W] | | 0.12 | 0.12 | 0.48 | 2.40 |
| Lifetime (at rated breaking capacity) | | > 10 ⁵ | > 10 ⁶ | > 10 ⁶ | > 10 ⁶ | > 10 ⁶ |
| Initial contact resistance, new | [mΩ] | max. 100 | < 50 | < 50 | < 50 | < 50 |
| Initial contact resistance, after lifetime | [mΩ] | max. 100 | < 150 | < 150 | < 50 | < 50 |
| Insulation resistance | [mΩ] | | > 10 ⁸ | > 10 ⁸ | > 10 ⁸ | > 10 ⁸ |
| Contact bounce time | [ms] | typ. 0.1 | typ. 0.15 | typ. 0.15 | typ. 0.1 | typ. 0.1 |
| Mechanical data | | | | | | |
| Actuating force | IP 40 [N] | 1.6 ± 0.5 | 1.6 ± 0.4 | 1.6 ± 0.4 | 2.5 ± 0.5 | 2.5 ± 0.5 |
| | IP 67 [N] | | 1.8 ± 0.4 | 1.8 ± 0.4 | | |
| Contact travel | [mm] | 0.25 + 0.2 / -0.1 | 0.35 ± 0.1 | 0.35 ± 0.1 | 0.45 ± 0.1 | 0.45 ± 0.1 |
| End stop strength | [N] | 50 N/3s | > 100 | > 100 | > 50 | > 50 |
| Lifetime | [operations] | > 10 ⁵ | > 10 ⁶ | > 10 ⁶ | > 10 ⁶ | > 10 ⁶ |
| Other data | | | | | | |
| Degree of protection | | IP 40 | IP 40 / IP 67 | IP 40 / IP 67 | IP 40 | IP 40 |
| Soldering method | | IR-Reflow | IR-Reflow | Wave | Wave | Wave |
| Soldering heat resistance | (LSH) IR Reflow [°C/s] | 240/20 | | | | |
| | (LPV/LPS/LPH) [°C/s] | 260/3 | | | | |
| | Jedec J-STD-020C | | 245/5 | 248,5/1 | 248,5/1 | 248,5/1 |
| Ambient temperature | [°C] | -20 – +70 | -40 – +85 | -40 – +85 | -25 – +85 | -25 – +85 |
| Storage temperature | [°C] | -30 – +85 | -40 – +85 | -40 – +85 | -25 – +85 | -25 – +85 |
| Cleaning agent proof | | | Zestron | Zestron | | |
| Flux - proof | | | IP67 | IP67 | | |
| Materials | | | | | | |
| Sealing membrane IP 67 | | | VMQ | | VMQ | |
| Contact material gold | | | CuZn37 Ni + Au | | CuZn -3µm Ni +2µm Au | |
| Contact material silver | | | | | CuZn -2.5µm Ag passivated | |
| Terminals | | CuZn+Cu+Ag 0,7µm | CuZn37 - Sn | | | |
| Socket | | | Thermoplast PA 4.6 | | Thermoplast PES | |
| Actuator | | | Thermoplast PPS | | Thermoplast PC | |
| Cover plate | | | X 12CrNi177 | | | |

OVERVIEW

LPS, LPV SWITCHES—MOMENTARY ACTION



FEATURES

Degree of protection

Models/Leads

PART NUMBER *

Actuator dimensions

2.40 mm x 2.40 mm

2.80 mm x 2.80 mm

Actuator ø A / Overall height h

3.50 mm / 3.85 mm

3.40 mm / 4.30 mm

3.40 mm / 5.00 mm

3.30 mm / 6.15 mm

3.20 mm / 7.00 mm

3.30 mm / 7.30 mm

3.10 mm / 8.00 mm

3.20 mm / 9.50 mm

3.00 mm / 11.35 mm

3.00 mm / 12.50 mm

Packaging

loose in boxes

taped and reeled

Dimensions:

Solder pads:
Drilling diagram:

Circuit diagram:



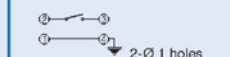
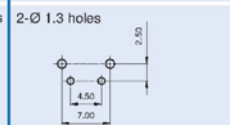
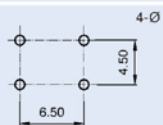
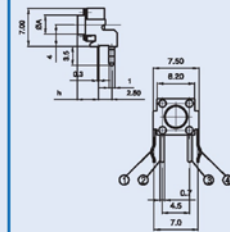
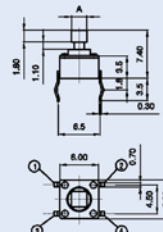
LPS



LPV

| | |
|----------------------|----------------------|
| IP 40 | IP 40 |
| Through hole, square | Through hole, angled |

| | |
|-----------|-------------|
| 1301.9308 | |
| 1301.9309 | |
| | 1301.9501 |
| | 1301.9503 * |
| | 1301.9502 |



* X in the Part No. must be replaced by the desired version

* Please see the PCN. The drawings and technical specs are not valid for this variant (1301.9503).

X-ON Electronics

Largest Supplier of Electrical and Electronic Components

Click to view similar products for [Tactile Switches](#) category:

Click to view products by [Schurter](#) manufacturer:

Other Similar products are found below :

[KMR633NG LFG](#) [5GTH92001](#) [5GTH9202242](#) [6426-201-11343](#) [MJ1226](#) [MJTP1109B](#) [MJTP1138EAUTR](#) [MJTP1230BL](#) [MJTPSHW](#)
[GS6.90F300QP](#) [1-1977223-0](#) [1-1977120-4](#) [ADTSA62NV](#) [ADTSA62RV](#) [ADTSA63KV](#) [ADTSA644NV](#) [ADTSM24NVTR](#) [ADTSMW66NV](#)
[ADTSMW67RV](#) [ATM533VTR](#) [1571300-3](#) [B3F-3123](#) [B3F-6055A](#) [B3F-B32-01-KIT](#) [1977177-8](#) [1977266-1](#) [2-1977223-4](#) [2-1977223-7](#)
[ADTS644KV](#) [ADTSA61RV](#) [ADTSA62KV](#) [ADTSA63NV](#) [ADTSA63RV](#) [ADTSA65NV](#) [ADTSM21NSVTR](#) [ADTSM25RVTR](#)
[ADTSM31RVTR](#) [ADTSM32NVTR](#) [ADTSM61YVTR](#) [ADTSM63SVTR](#) [ADTSM644KVTR](#) [ADTSMW64RV](#) [ADTSMW69NV](#)
[FSMRA4JHA04](#) [GS4.70F300QP](#) [D38999/20JJ37SA](#) [TL1105B](#) [TL1105J](#) [ATH447K2Q](#) [ATM534VTR](#)