

DIECAST AND METAL BOXES

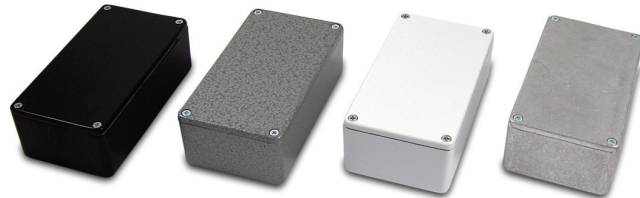
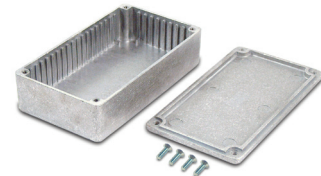
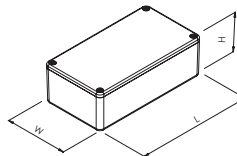
5000 Series Multi-Purpose Diecast

Highly durable robust aluminium diecast boxes with RFI shielding properties.

- Diecast aluminium
- Lid mounted by four M3 machine screws
- Temperature resistant up to 260°C (without gasket)
- Highly Durable and shock resistant
- Vertical guides for PCB fixing
- Optional neoprene gasket for IP65 seal

SPECIFICATION	
Materials	Lid & base diecast aluminium to ENAC 44200
Protection class	IP54 IP65 optional
Standard colours	Black RAL 9004, white RAL 9010, natural or hammertone Powder coating optional
Standard unit includes	Base, lid & x4 zinc plated M3 screw
Options	Wall mounting kit IP65 gasket

NATURAL	HAMMERTONE	BLACK	WHITE	LENGTH	WIDTH	HEIGHT
RTM5001/11-NAT	RTM5001/11-PAT	RTM5001/11 - BLK	RTM5001/11 - WH	50mm	50mm	31mm
RTM5002/12-NAT	RTM5002/12-PAT	RTM5002/12 - BLK	RTM5002/12 - WH	101mm	50mm	25mm
RTM5003/13-NAT	RTM5003/13-PAT	RTM5003/13 - BLK	RTM5003/13 - WH	112mm	62mm	31mm
RTM5004/14-NAT	RTM5004/14-PAT	RTM5004/14 - BLK	RTM5004/14 - WH	120mm	66mm	40mm
RTM5005/15-NAT	RTM5005/15-PAT	RTM5005/15 - BLK	RTM5005/15 - WH	152mm	82mm	50mm
RTM5006/16-NAT	RTM5006/16-PAT	RTM5006/16 - BLK	RTM5006/16 - WH	192mm	112mm	61mm
RTM5007/17-NAT	RTM5007/17-PAT	RTM5007/17 - BLK	RTM5007/17 - WH	121mm	95mm	61mm



Wall mounting kit

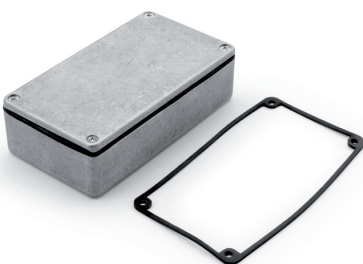
- One type fits all sizes



TYPE NO.	DESCRIPTION
RT5000-K	Wall mounting kit

5000-IP Gasket

- Neoprene gasket, 1.5mm thick
- Resistant to acids, gasoline
- Suitable for outdoor applications
- Protection rating IP65



TYPE NO.	DESCRIPTION
FT094-517	5001-11 Gasket
FT094-505	5002-12 Gasket
FT094-509	5003-13 Gasket
FT094-510	5004-14 Gasket
FT094-513	5005-15 Gasket
FT094-506	5006-16 Gasket

UNIVERSAL ENCLOSURES

HAND HELD CASES

HEAVY DUTY ENCLOSURES

DIN RAIL BOXES

INTERFACE SUPPORTS

CONTROL STATIONS

DIECAST & METAL BOXES

DESKTOP & INSTRUMENT CASES

POTTING BOXES

19" ENCLOSURES

19" CABINETS

DEVELOPMENT BOARD ENCLOSURES

CUSTOM SIZED ENCLOSURES

CUSTOM SERVICES



+44 (0)1638 716101
info@camdenboss.com
www.camdenboss.com

We operate a constant improvement policy, our products are subject to change without notice.

Ver 1.0 Iss 1

CAMDENBOSS
ELECTRONICS & ENCLOSURES

X-ON Electronics

Largest Supplier of Electrical and Electronic Components

Click to view similar products for [camden manufacturer](#):

Other Similar products are found below :

[412689X](#) [CTBP92VE/12R](#) [CTBP9350/12](#) [IND515205-240-T/GRN](#) [IND515205-240-T/RD](#) [IND5032405-240-T/GRN](#) [CE10.00.EI](#)
[C192SHAND](#) [CNMB/6ST/2](#) [CNMB/4ST/2](#) [CSACST004](#) [CTBP9200/9](#) [CIME/M/BE2250SS](#) [CHH64E1BL](#) [CIM/15W-DMFS](#) [CHHBAT2GY](#)
[CFTBN/2](#) [CCB2S1/04](#) [CHDX6-221C](#) [CHDX8-224](#) [CHDASMP29](#) [CHDASMP30](#) [CHDASMP34](#) [CHDX810DD](#) [CHDX811DD](#)
[CCTTM40LR](#) [CTBP92VJ/5S](#) [CTBP92VJ/8R](#) [CTSN431/12/M](#) [CTSN433/12/M](#) [CUABOX006](#) [CE10.00.FM](#) [CBRPH-BLK](#) [BIM2003/13-](#)
[WH/WH](#) [RX2008/S-5-WH](#) [CBARD-CAR](#) [CRDCG0007](#) [CNMB/4/KIT](#) [CTB5050/5](#) [CTBP92HE/11](#) [CTBP9358/10AO](#) [CHH66C2GY](#)
[CHH456PBK](#) [CHH451ABK](#) [CIM/9W-DMFS](#) [CIM/25W-DMFS](#) [RTM5006/16-NC-BLK](#) [IND5032405-125-T/AMB](#) [CCB1S1/03](#) [CCD2S1/04](#)